



PRICED AT
\$716,745

 **2201 Sq Ft**

 **3 Beds**

 **2.5 Baths**

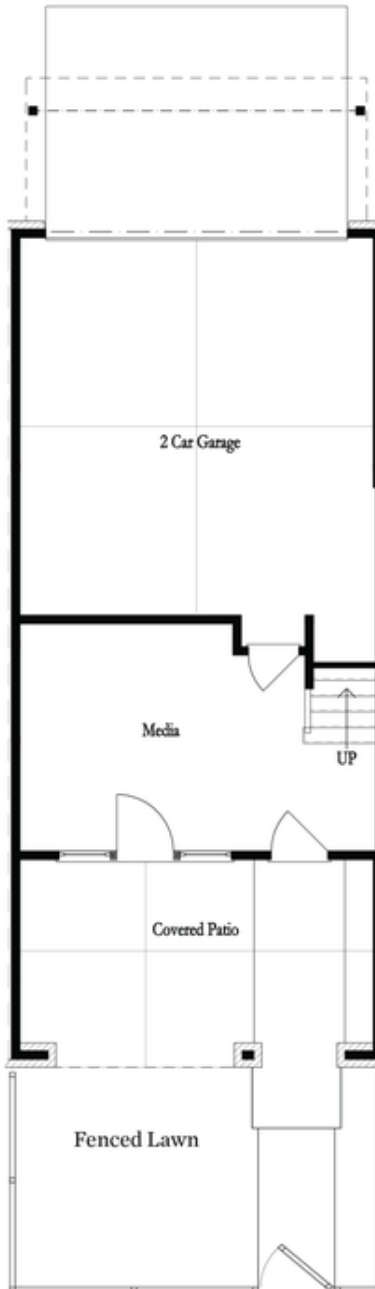
 **2 Car Garage**

 **3.0 Story**

Home for The Holidays with The Providence Group - \$25,000 ANY WAY for contracts closing in December. Amazing location across from Community Lawn - private fenced-in front yard, all taken care of by the HOA. Outdoor fireplace on exterior front patio for evening relaxation or morning coffee! Inside the front door of the home, you will find multi-use flex room that could fit many needs (gym, office, extra living space). Walking upstairs to the main floor, you will find the kitchen, living and dining areas - all complete with upgraded finishes throughout. Willow Grey Island Cabinets that beautifully compliment the White Perimeter Cabinetry. Matte Black plumbing and hardware accents create stunning contrast throughout the home. Large windows adorn the living room for tons of natural light! Tucked away behind the kitchen is a sunroom that could double as a home office space with access to the deck. Linear fireplace with stacked structure cream quartzite and box beam mantel. The top floor hosts your spacious owner's suite with large walk-in closet. The owner's bath has a dual vanity a large, tiled shower. 2 secondary bedrooms with a shared bath are located down the hallway. 2 car garage on the back with ...

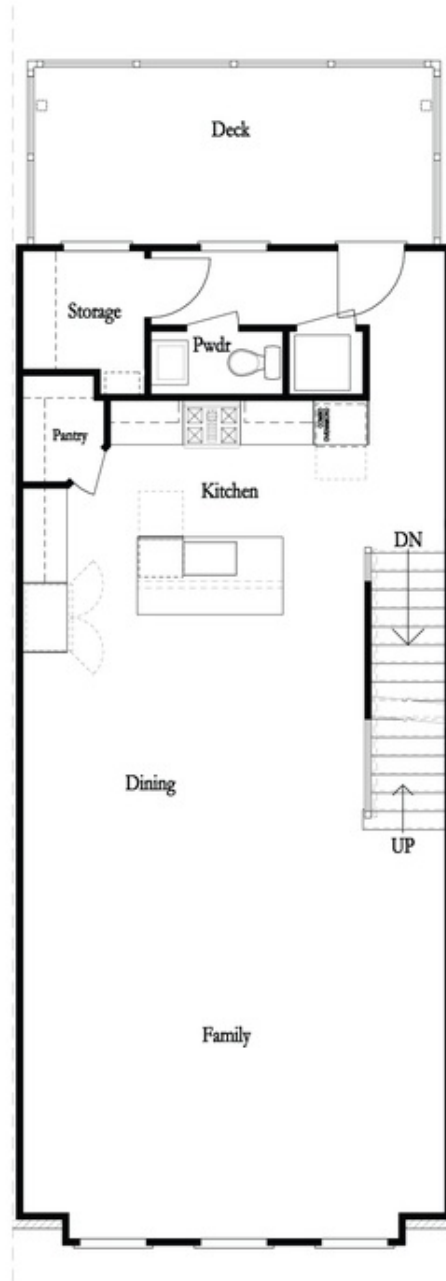
**Want to Know More
About This Home?**

CONTACT OUR COMMUNITY SALES MANAGER
Call Us @ 470.514.6999



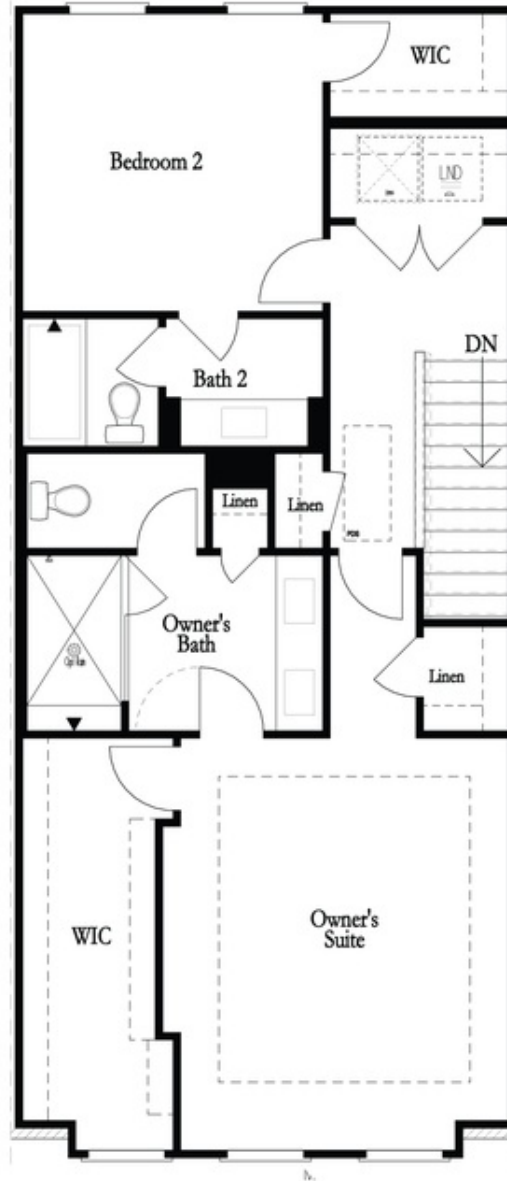
Want to Know More
About This Home?

CONTACT OUR COMMUNITY SALES MANAGER
Call Us @ 470.514.6999



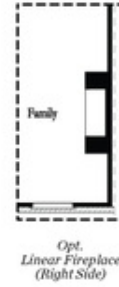
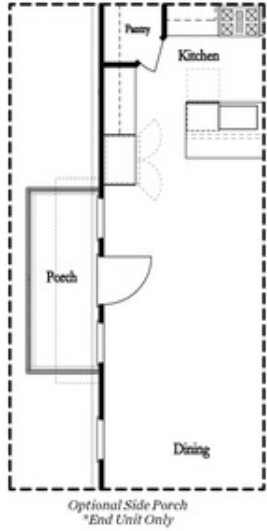
Want to Know More
About This Home?

CONTACT OUR COMMUNITY SALES MANAGER
Call Us @ 470.514.6999

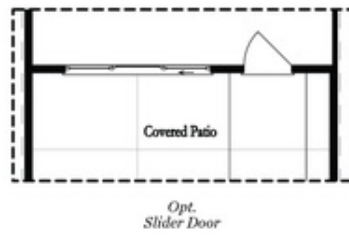
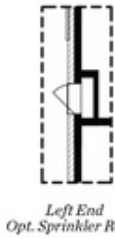


Want to Know More
About This Home?

CONTACT OUR COMMUNITY SALES MANAGER
Call Us @ 470.514.6999



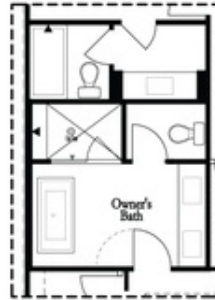
Main Level Options



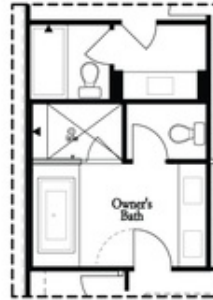
Terrace Level Options

Want to Know More
About This Home?

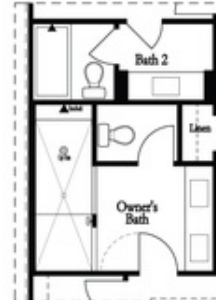
CONTACT OUR COMMUNITY SALES MANAGER
Call Us @ 470.514.6999



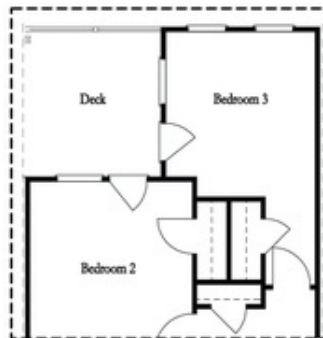
*Opt. Freestanding
Tub/Shower Combo*



*Opt. Decked
Tub/Shower Combo*



Opt. Walk-Through Shower



*Opt. Bedroom 3
*Only Available with Sunroom option
Laundry Moved to Main Level w/ this Opt.

Upper Level Options

Want to Know More
About This Home?

CONTACT OUR COMMUNITY SALES MANAGER
Call Us @ 470.514.6999