



PRICED AT
\$643,895

 2201 Sq Ft

 3 Beds

 3.5 Baths

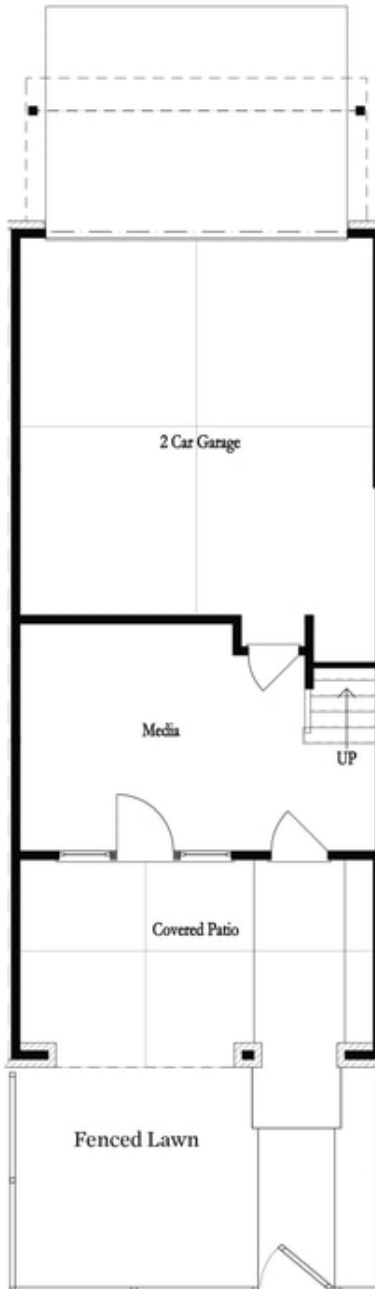
 2 Car Garage

 3.0 Story

RARE QUICK MOVE IN! - Receive \$5,000 in closing costs with Builder's Lender! Enjoy easy access to our full-sized pool, 2-story clubhouse with full gym, and Amenity Area. Explore our popular Benton II floorplan with upgrades throughout. Stunning Cambria countertops, stainless appliances and tile backsplash is a chef's dream! White kitchen cabinetry adorned with stunning Quartz Countertops. From the kitchen, you have a perfect view of dining, family room with fireplace. Around the corner from the kitchen is a sunroom/office that leads to the deck. A perfect place for an office without using a bedroom! Rear drive-under 2 car garage with alley access, full driveway with two parking spots. Guest parking along front of building. New Gated Master Planned Community backing up to the Chattahoochee River, 1 mile from The Forum w/shops & restaurants, in the heart of Peachtree Corners. Fabulous amenity package includes clubhouse, park areas, pool, trails down by the River, fitness ctr. & more opening Fall 2023! Photos are not of actual unit. For driving directions, you can use 4411 E. Jones Bridge Road, Peachtree Corners, GA 3009.

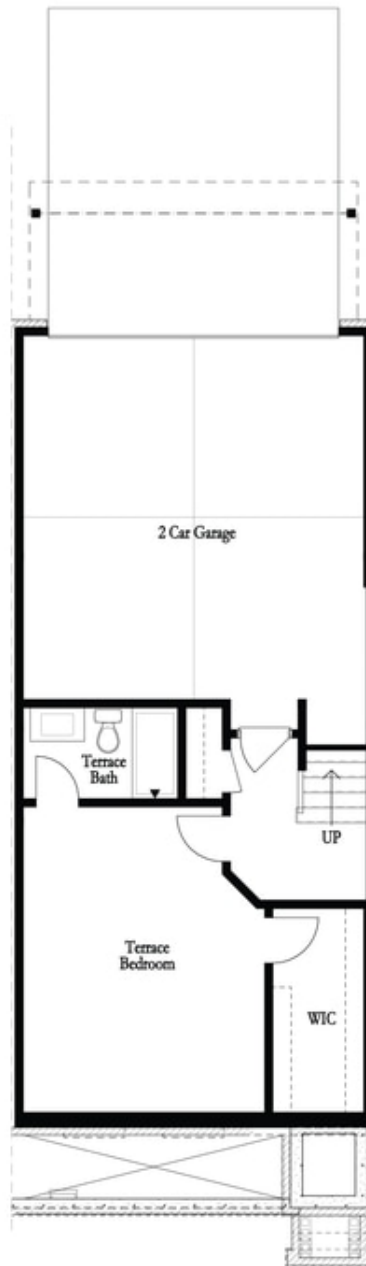
**Want to Know More
About This Home?**

CONTACT OUR COMMUNITY SALES MANAGER
Call Us @ 470.514.6999



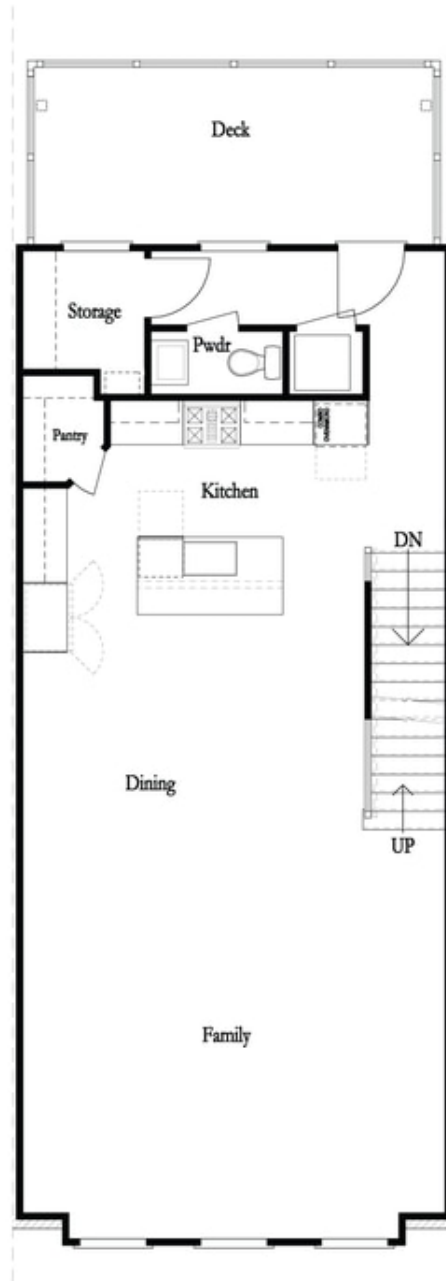
**Want to Know More
About This Home?**

CONTACT OUR COMMUNITY SALES MANAGER
Call Us @ 470.514.6999



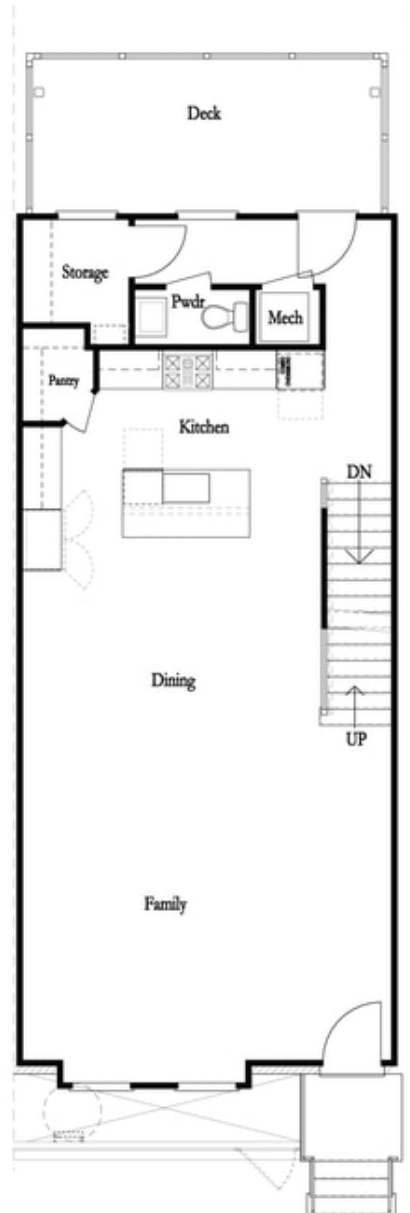
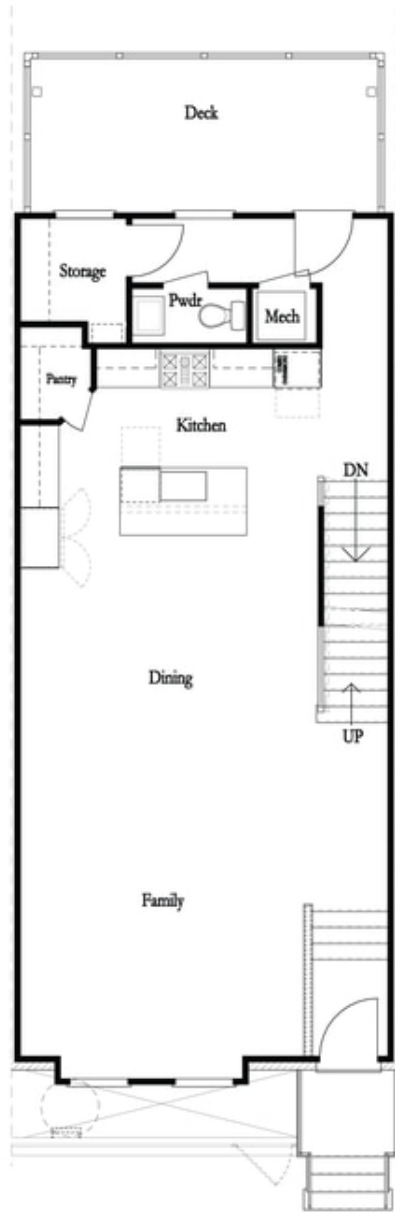
**Want to Know More
About This Home?**

CONTACT OUR COMMUNITY SALES MANAGER
Call Us @ 470.514.6999



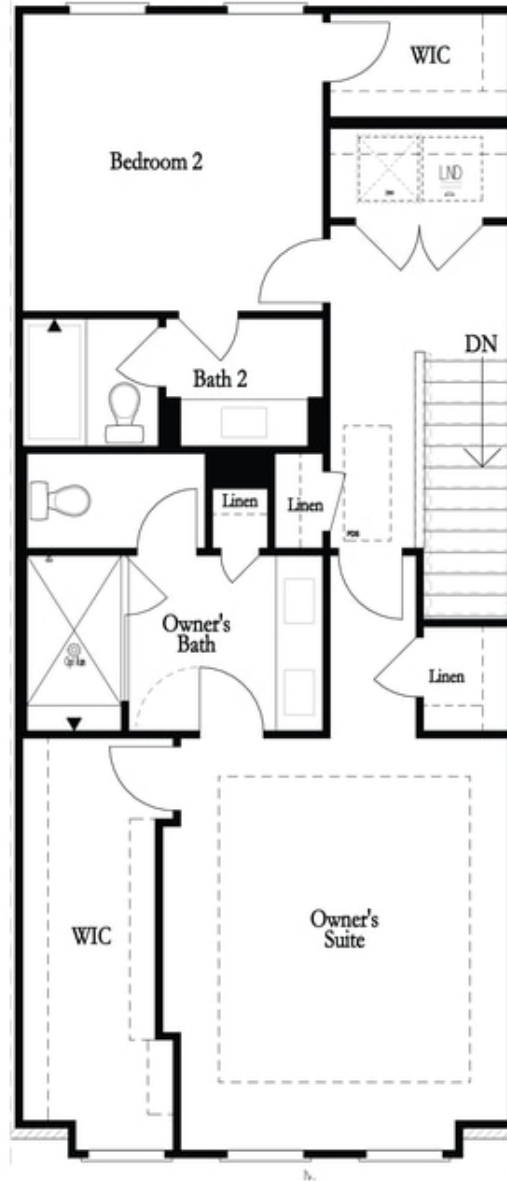
**Want to Know More
About This Home?**

CONTACT OUR COMMUNITY SALES MANAGER
Call Us @ 470.514.6999



**Want to Know More
About This Home?**

CONTACT OUR COMMUNITY SALES MANAGER
Call Us @ 470.514.6999



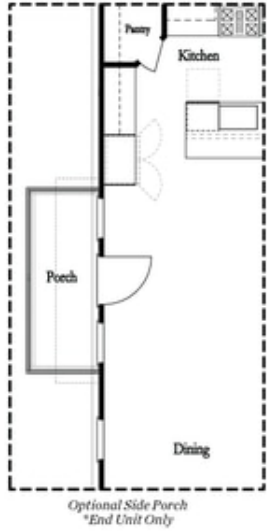
**Want to Know More
About This Home?**

CONTACT OUR COMMUNITY SALES MANAGER
Call Us @ 470.514.6999

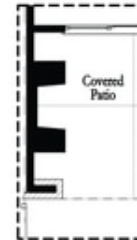
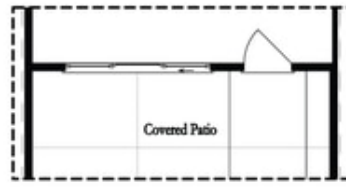
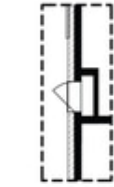


**Want to Know More
About This Home?**

CONTACT OUR COMMUNITY SALES MANAGER
Call Us @ 470.514.6999



Main Level Options



Terrace Level Options

Want to Know More
About This Home?

CONTACT OUR COMMUNITY SALES MANAGER
Call Us @ 470.514.6999

* Not All Options are Available in All Communities



*Left End
 Opt. Sprinkler Room*

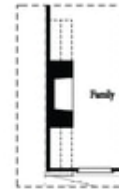


*Right End
 Opt. Sprinkler Room*

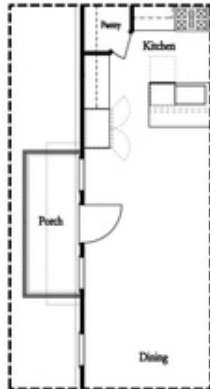
Terrace Level Options



Laundry with Optional Bedroom 3 Only



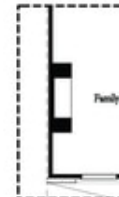
Opt. 36" Fireplace



*Optional Side Porch
 End Unit Only



Opt. Sunroom

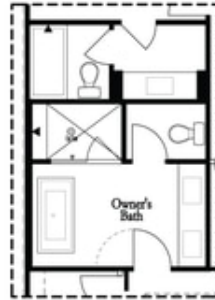


Opt. Linear Fireplace

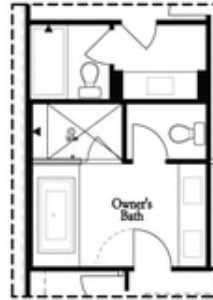
Main Level Options

**Want to Know More
 About This Home?**

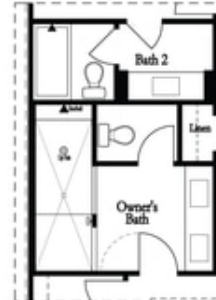
CONTACT OUR COMMUNITY SALES MANAGER
 Call Us @ 470.514.6999



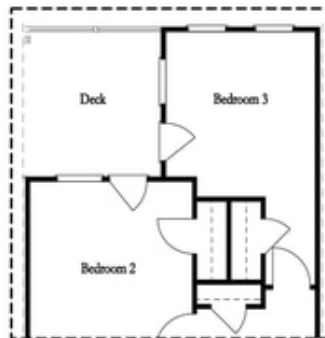
*Opt. Freestanding
 Tub/Shower Combo*



*Opt. Decked
 Tub/Shower Combo*



Opt. Walk-Through Shower



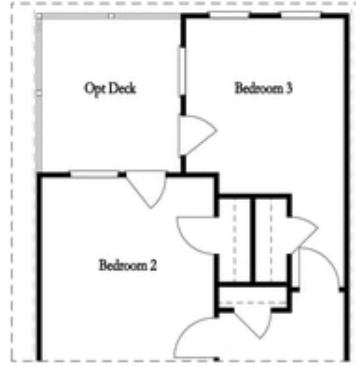
*Opt. Bedroom 3
 *Only Available with Sunroom option
 Laundry Moved to Main Level w/ this Opt.

Upper Level Options

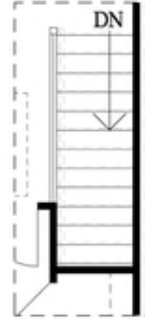
**Want to Know More
 About This Home?**

CONTACT OUR COMMUNITY SALES MANAGER
 Call Us @ 470.514.6999

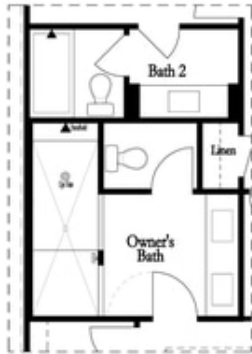
Options



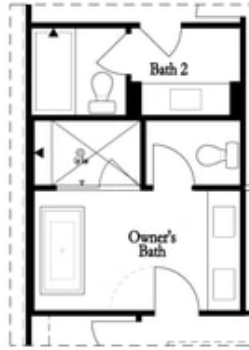
*Opt. Bedroom 3
 *Only available w/ sunroom option
 Laundry moved to main floor w/ this opt.



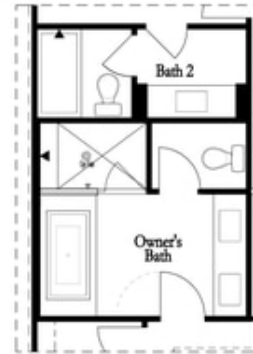
Opt. Open Rail



*Opt. Walk-Through
 Shower*



*Opt. Freestanding
 Tub/Shower Combo*



*Opt. Decked
 Tub/Shower Combo*

Third Floor Options

**Want to Know More
 About This Home?**

CONTACT OUR COMMUNITY SALES MANAGER
 Call Us @ 470.514.6999