

PRICED AT  
**\$652,880**

 2304 Sq Ft

 3 Beds

 3.5 Baths

 2 Car Garage

 3.0 Story

Elevate your life in 2023 with a new home by The Providence Group and \$5,000 towards closing cost when financing with one of Seller's 4 preferred lenders. END UNIT! Beautiful large open-plan townhome one mile from shops, breweries, restaurants, movies and festivals at the Forum. Come check out all the natural light soaring through this home. Kitchen boast GE appliances, a microwave/oven combo, a dishwasher and a gas cooktop giving you all the gourmet feels. Generous island perfect for meal prepping and serving. From the kitchen you can see straight to your dining area and living room- don't miss the play on TV or miss out on the conversation! The owner's suite is upstairs and 2 separate closets both large in size. The owner's suite has dual vanity built-in tub and large shower. An additional secondary bedroom and bath upstairs as well and the other guest bedroom and bath is downstairs in the terrace level. All of this plus a bright sunroom and deck off of the rear. Waterside is a little slice of heaven backing up to the Chattahoochee River. Take a walk on one of our many future trails along the river. No excuse to not get your ...

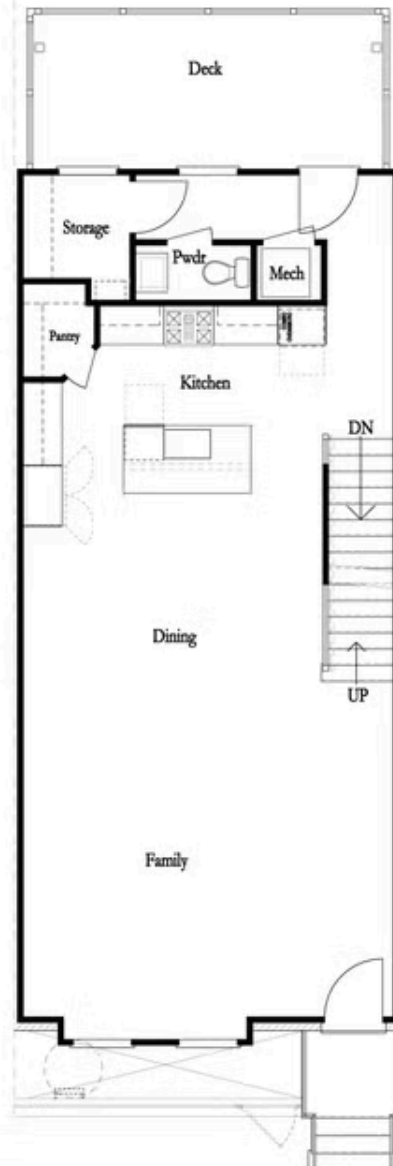
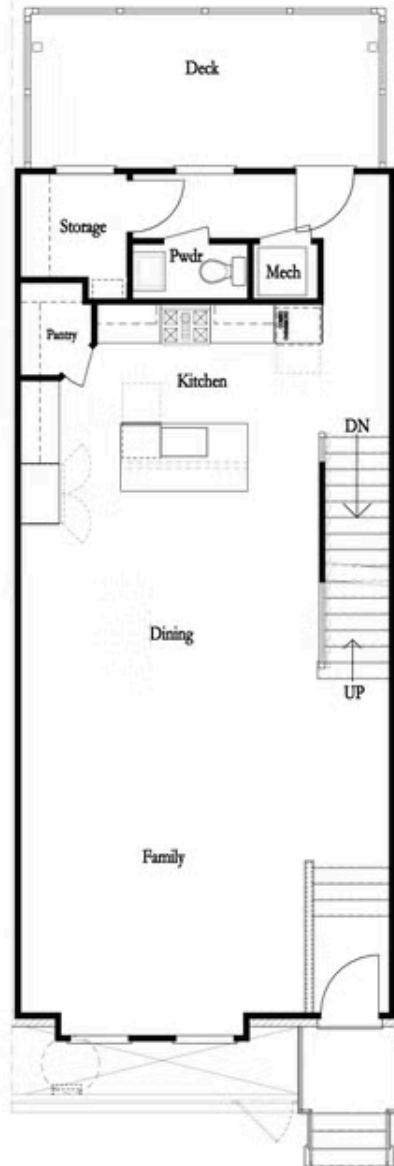
**Want to Know More  
About This Home?**

CONTACT OUR COMMUNITY SALES MANAGER  
Call Us @ 470.514.6999



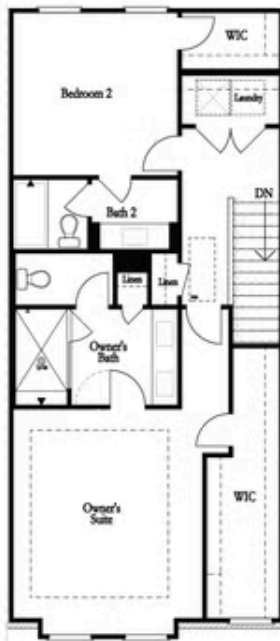
Want to Know More  
About This Home?

CONTACT OUR COMMUNITY SALES MANAGER  
Call Us @ 470.514.6999



Want to Know More  
About This Home?

CONTACT OUR COMMUNITY SALES MANAGER  
Call Us @ 470.514.6999



Elevation M



Elevation O



Elevation N

Want to Know More  
About This Home?

CONTACT OUR COMMUNITY SALES MANAGER  
Call Us @ 470.514.6999

\* Not All Options are Available in All Communities



*Left End  
Opt. Sprinkler Room*

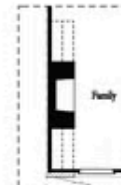


*Right End  
Opt. Sprinkler Room*

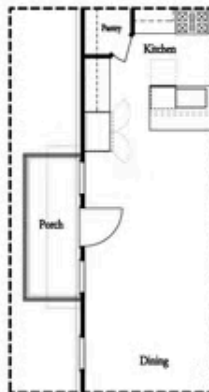
#### Terrace Level Options



*Laundry with Optional Bedroom 3 Only*



*Opt. 36" Fireplace*



*Optional Side Porch  
\*End Unit Only*



*Opt. Sunroom*



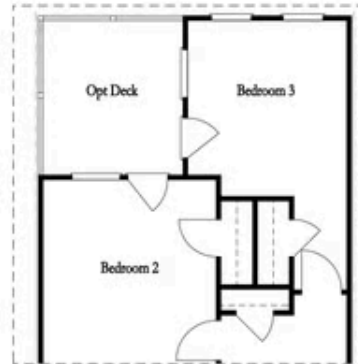
*Opt. Linear Fireplace*

#### Main Level Options

Want to Know More  
About This Home?

CONTACT OUR COMMUNITY SALES MANAGER  
Call Us @ 470.514.6999

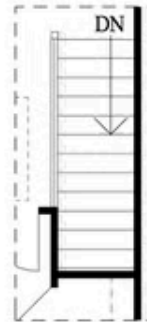
### Options



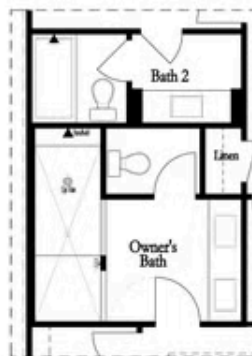
Opt. Bedroom 3

\*Only available w/ sunroom option

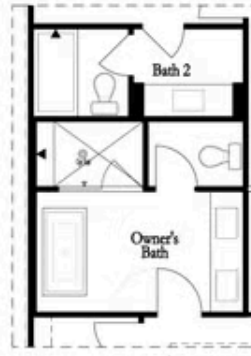
\*Laundry moved to main floor w/ this opt.



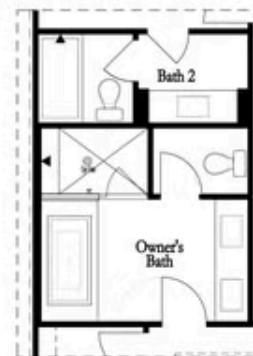
Opt. Open Rail



Opt. Walk-Through  
Shower



Opt. Freestanding  
Tub/Shower Combo



Opt. Decked  
Tub/Shower Combo

### Third Floor Options

Want to Know More  
About This Home?

CONTACT OUR COMMUNITY SALES MANAGER  
Call Us @ 470.514.6999