



PRICED AT

\$654,035

 2395 Sq Ft

 3 Beds

 3.5 Baths

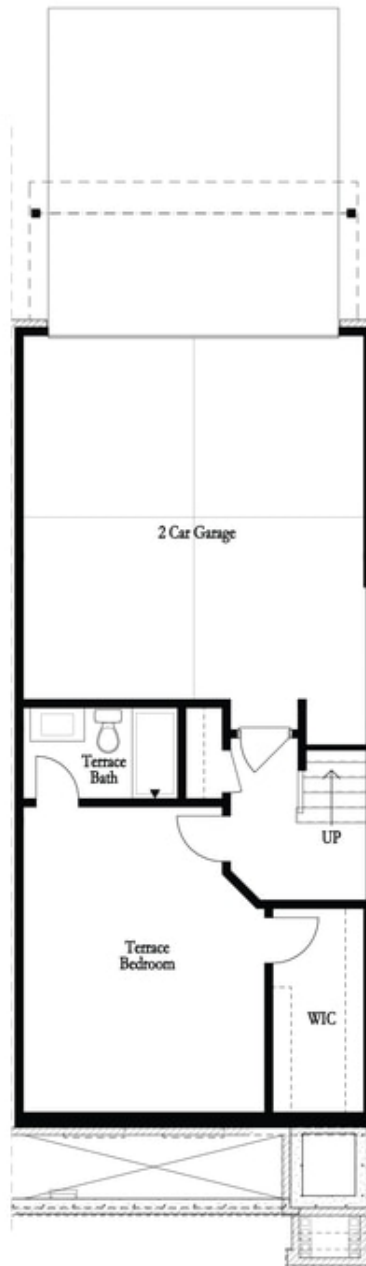
 2 Car Garage

 3.0 Story

Elevate your life in 2023 with a new home by The Providence Group and \$5,000 towards closing cost when financing with one of Seller's 4 preferred lenders. Bright, Bold, Big END UNIT townhome. Currently under construction and scheduled to be completed in the Spring of 2023. This end-unit townhome comes with extra windows giving you lots of natural light. Three sides brick buildings with Terrace level bedroom and bath. 2 car garage on back. Owners' bedroom plus guest bedrooms are generous in size. Our design team has added amazing options to this home. Quartz countertops in the kitchen with white kitchen cabinets and a driftwood color island. The fireplace will have floor-to-ceiling quartzite rock which is a show stopper! Hardwoods on the main floor and the owner's bedroom. Waterside is a gated community backing up the beautiful Chattahoochee River. Find peace and quiet along the walking trails by the river. If you are over peace and quiet, head to the Forum one mile away for shops, restaurants, and breweries. movies and festivals. The City has recently widened the sidewalk on E Jones Bridge to SR141 giving you easy access to the Forum if you wanted to walk, bike or run. ...

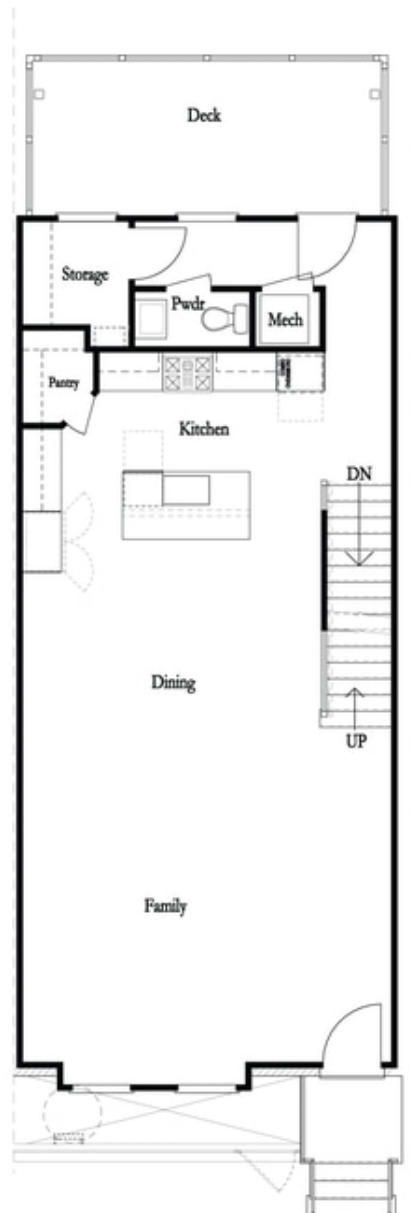
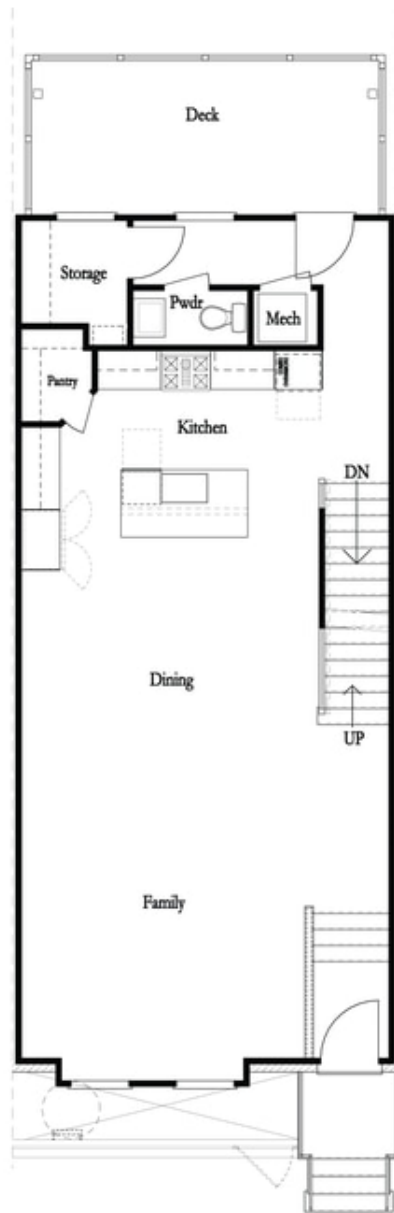
**Want to Know More
About This Home?**

CONTACT OUR COMMUNITY SALES MANAGER
Call Us @ 470.514.6999



**Want to Know More
About This Home?**

CONTACT OUR COMMUNITY SALES MANAGER
Call Us @ 470.514.6999



**Want to Know More
About This Home?**

CONTACT OUR COMMUNITY SALES MANAGER
Call Us @ 470.514.6999



**Want to Know More
 About This Home?**

CONTACT OUR COMMUNITY SALES MANAGER
 Call Us @ 470.514.6999

* Not All Options are Available in All Communities



*Left End
 Opt. Sprinkler Room*

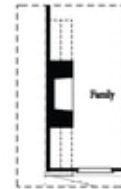


*Right End
 Opt. Sprinkler Room*

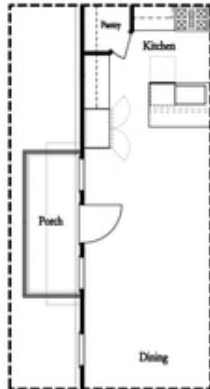
Terrace Level Options



Laundry with Optional Bedroom 3 Only



Opt. 36" Fireplace



*Optional Side Porch
 End Unit Only



Opt. Sunroom



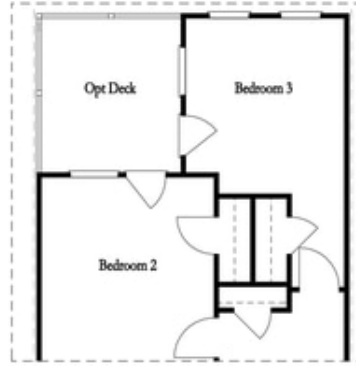
Opt. Linear Fireplace

Main Level Options

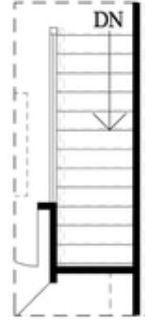
**Want to Know More
 About This Home?**

CONTACT OUR COMMUNITY SALES MANAGER
 Call Us @ 470.514.6999

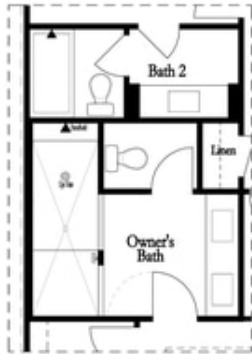
Options



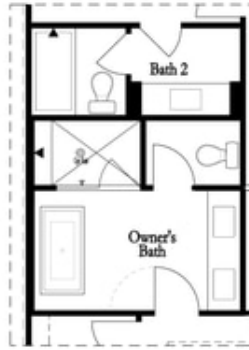
*Opt. Bedroom 3
 *Only available w/ sunroom option
 Laundry moved to main floor w/ this opt.



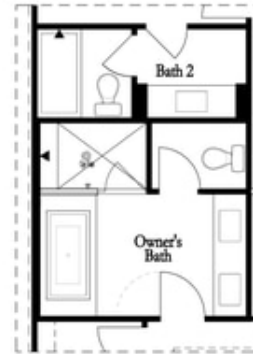
Opt. Open Rail



*Opt. Walk-Through
 Shower*



*Opt. Freestanding
 Tub/Shower Combo*



*Opt. Decked
 Tub/Shower Combo*

Third Floor Options

**Want to Know More
 About This Home?**

CONTACT OUR COMMUNITY SALES MANAGER
 Call Us @ 470.514.6999