

PRICED AT  
**\$655,590**

 2395 Sq Ft

 3 Beds

 3.5 Baths

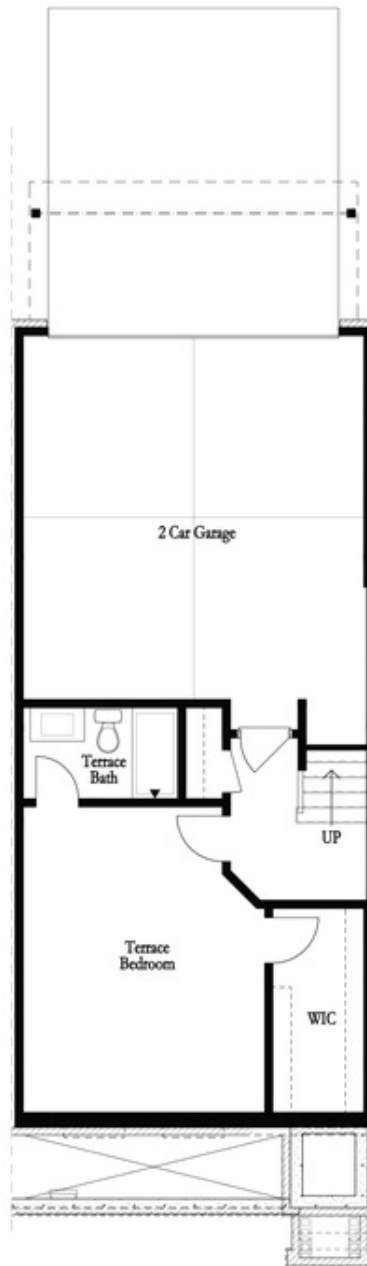
 2 Car Garage

 3.0 Story

**Hurry, move-in ready!! Elevate your life in 2023 with a new home by The Providence Group and \$5,000 towards closing cost when financing with one of Seller's 5 preferred lenders. Beautiful Brownstone townhome in the newest development in Peachtree Corners right off E. Jones Bridge. Nestled along the Chattahoochee, there are walking trails, and resort amenities! The Benton II has three sides brick with 2 car garage. When you open the front door you are greeted with 10' ceilings, a beautiful fireplace, and oversized windows to let in all the natural light. The beautiful kitchen has white cabinets cabinets, soft close doors/drawers, stainless GE profile appliances, Cambria quartz counter tops and a walk-in pantry. Wonderful sunroom on this floor, perfect for an office! Adjoining the sunroom is a private deck. The owner's bedroom is upstairs along with a guest bedroom with private on-suite and laundry room. The owner's suite bathroom has dual vanities, a huge walk-in shower. Additional guest bedroom downstairs on the terrace level with full bath. Amenities include a gorgeous clubhouse with a fitness center, serene outdoor lawns, pickle ball courts, fire pit overlooking river, trails on the River, HOA-maintained lawns, and a gated entrance. If you love ...**

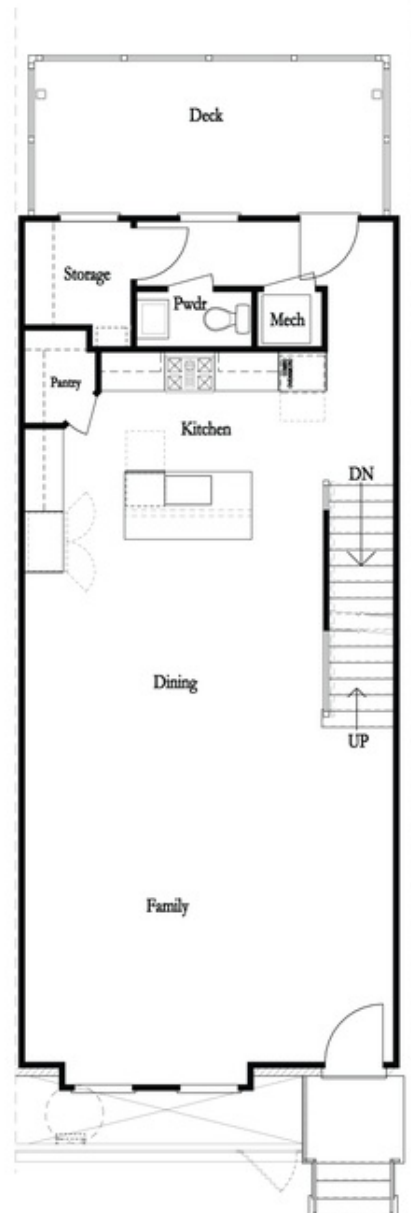
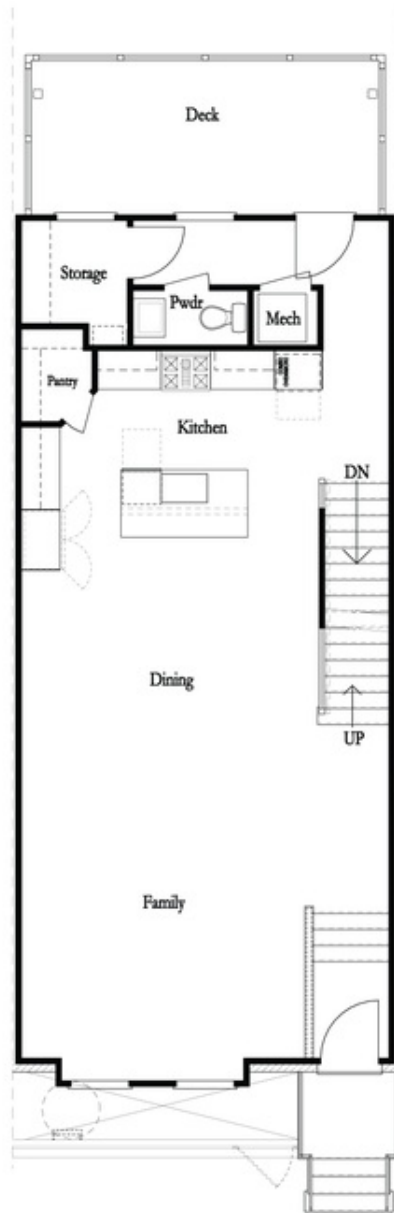
Want to Know More  
About This Home?

CONTACT OUR COMMUNITY SALES MANAGER  
Call Us @ 470.514.6999



Want to Know More  
About This Home?

CONTACT OUR COMMUNITY SALES MANAGER  
Call Us @ 470.514.6999



Want to Know More  
About This Home?

CONTACT OUR COMMUNITY SALES MANAGER  
Call Us @ 470.514.6999



Want to Know More  
 About This Home?

CONTACT OUR COMMUNITY SALES MANAGER  
 Call Us @ 470.514.6999

\* Not All Options are Available in All Communities

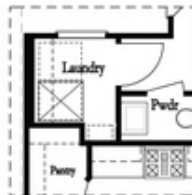


*Left End  
 Opt. Sprinkler Room*

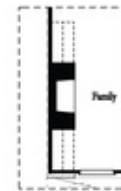


*Right End  
 Opt. Sprinkler Room*

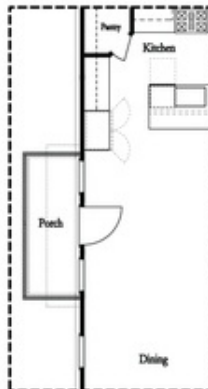
Terrace Level Options



*Laundry with Optional Bedroom 3 Only*



*Opt. 36\"/>*



*Optional Side Porch  
 \*End Unit Only*



*Opt. Sunroom*



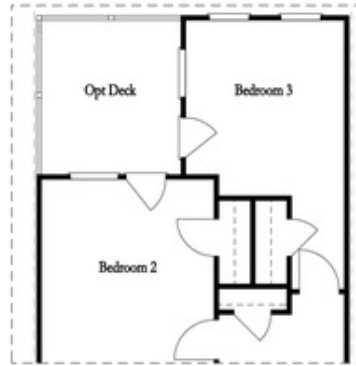
*Opt. Linear Fireplace*

Main Level Options

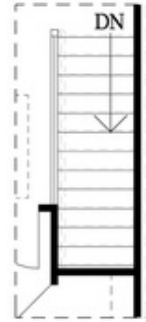
Want to Know More  
 About This Home?

CONTACT OUR COMMUNITY SALES MANAGER  
 Call Us @ 470.514.6999

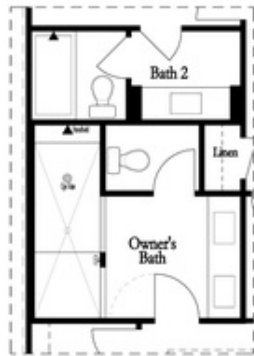
Options



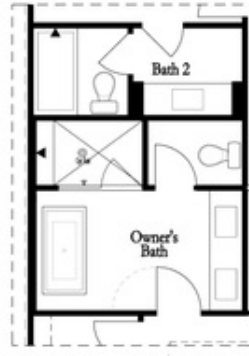
*Opt. Bedroom 3*  
*\*Only available w/ sunroom option*  
*\*Laundry moved to main floor w/ this opt.*



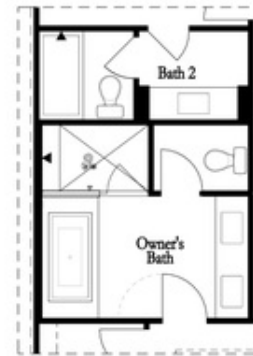
*Opt. Open Rail*



*Opt. Walk-Through Shower*



*Opt. Freestanding Tub/Shower Combo*



*Opt. Decked Tub/Shower Combo*

Third Floor Options

**Want to Know More  
 About This Home?**

**CONTACT OUR COMMUNITY SALES MANAGER**  
**Call Us @ 470.514.6999**