




PRICED AT  
**\$631,760**

 2170 Sq Ft

 3 Beds

 2.5 Baths

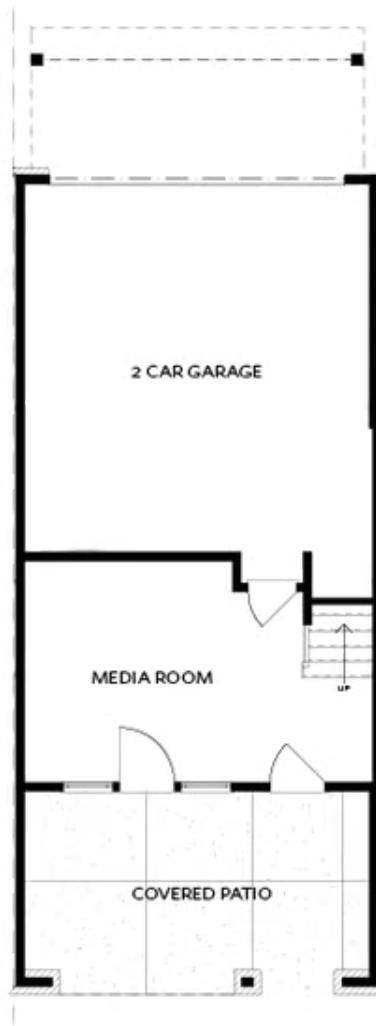
 2 Car Garage

 3.0 Story

Ask About our Fabulous Fall Incentives &/or Available to Close in 2022. Spectacular home design by The Providence Group. The Benton I is one of our most sought-after town home designs. It could be due to all the outdoor space, two decks, covered patio and a fenced front lawn. Not to mention the wide-open floor plan with a sunroom. Kitchen has a ton of cabinets for storage and entertaining, and is all open to the family room w/fireplace and large windows. The owners suite is grand and has a massive closet and beautiful bathroom. Two more bedrooms with bath are also on the same floor. Come check it out! New Gated Master Planned Community backing up to the Chattahoochee River, 1 mile from The Forum w/shops & restaurants, in the heart of Peachtree Corners. Fabulous amenity package includes clubhouse, park areas, pool, trails down by the River, fitness ctr. & more. For driving directions, you can use 4411 E. Jones Bridge Road, Peachtree Corners, GA 30092

**Want to Know More  
About This Home?**

CONTACT OUR COMMUNITY SALES MANAGER  
Call Us @ 470.514.6999

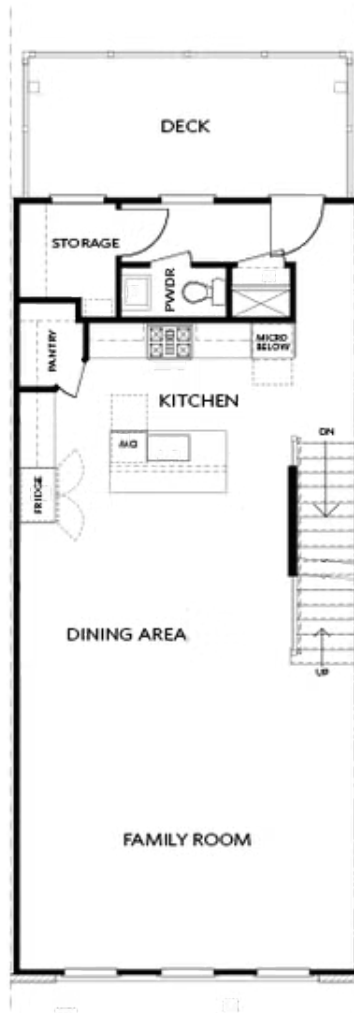


TERRACE

Elevation N

Want to Know More  
About This Home?

CONTACT OUR COMMUNITY SALES MANAGER  
Call Us @ 470.514.6999



SECOND FLOOR

Elevation N

Want to Know More  
About This Home?

CONTACT OUR COMMUNITY SALES MANAGER  
Call Us @ 470.514.6999



THIRD FLOOR

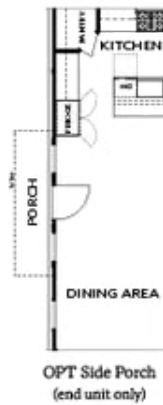
Elevation N

Want to Know More  
About This Home?

CONTACT OUR COMMUNITY SALES MANAGER  
Call Us @ 470.514.6999



## TERRACE



## SECOND FLOOR



## OPTIONS

Want to Know More  
About This Home?

CONTACT OUR COMMUNITY SALES MANAGER  
Call Us @ 470.514.6999



OPT Open Rail



OPT Bedroom 3 - ONLY Available  
with Optional Sunroom



OPT Walk-Through Shower



OPT Freestanding  
Tub/Shower Combo



OPT Decked Tub/  
Shower Combo

## OPTIONS

Want to Know More  
About This Home?

CONTACT OUR COMMUNITY SALES MANAGER  
Call Us @ 470.514.6999