



PRICED AT
\$719,780

 2517 Sq Ft

 3 Beds

 3.5 Baths

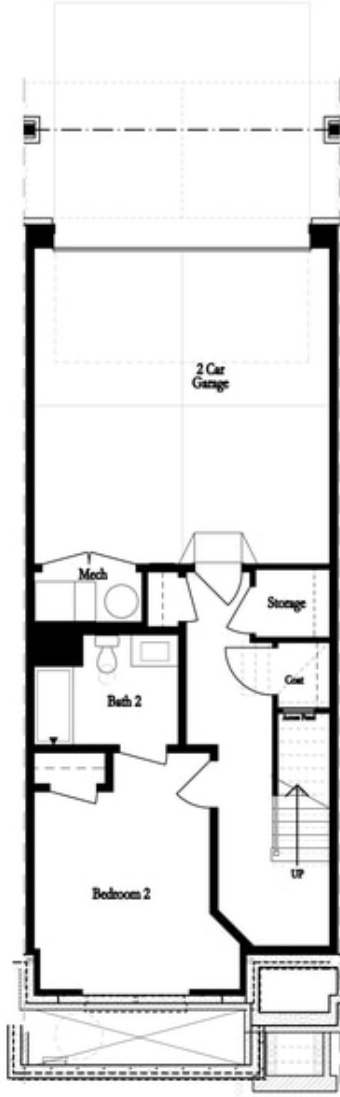
 2 Car Garage

 3.0 Story

Move-in Ready!! Hurry this one won't last! Elevate your life in 2023 with a new home by The Providence Group and \$10,000 towards closing cost when financing with one of Seller's 5 preferred lenders and extra incentives, call for details! Gorgeous Brownstone Collection!! This beautiful Jacobson II plan End Unit, gives you an abundance of natural light and three sided brick! 3 bedrooms and 3.5 Baths, owner's bedroom and one guest bedroom on the top floor then another guest bedroom with full bath on the terrace level. Need to add an elevator? This plan has a shaft! Spectacular Hardwood floors throughout except secondary bedrooms. Family room with Linear Fireplace wrapped in painted white brick and box beam mantle. Gorgeous kitchen with Willow Gray cabinets, Cambria countertops, stainless steel appliances and large island with view to dining and family room. Plus, washer, dryer and refrigerator! Come check out this wonderful home located in Waterside's gated, Master Planned Community nestled around the Chattahoochee River. Take a walk down by the river or enjoy one of our many amenities that are under construction: Serene pool, Impressive clubhouse with fitness center, green lawn spaces, fire pit, and overlook with extra seating, and HOA-maintained lawns. ...

**Want to Know More
About This Home?**

CONTACT OUR COMMUNITY SALES MANAGER
Call Us @ 470.514.6999



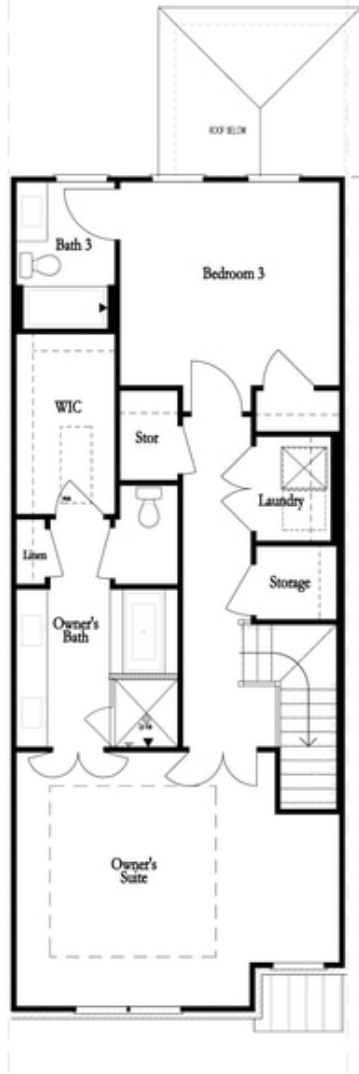
FIRST FLOOR



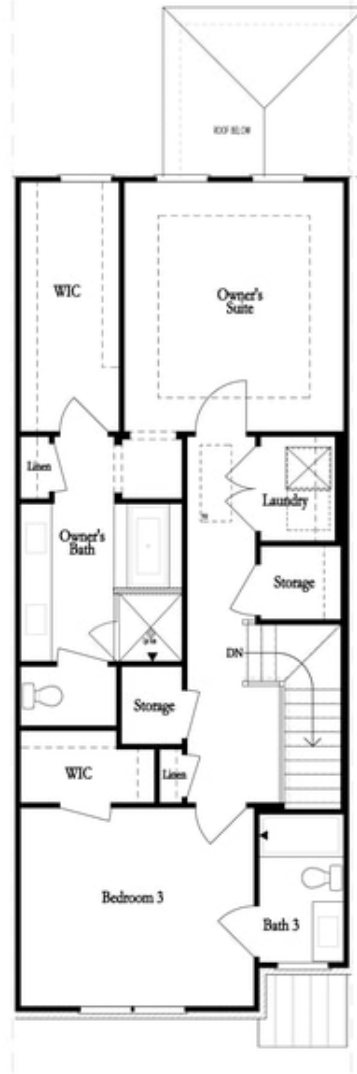
SECOND FLOOR

**Want to Know More
About This Home?**

CONTACT OUR COMMUNITY SALES MANAGER
Call Us @ 470.514.6999



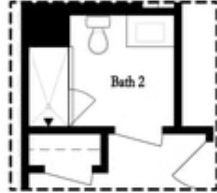
THIRD FLOOR
 OWNER'S FRONT



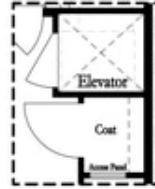
THIRD FLOOR
 OWNER'S REAR

**Want to Know More
 About This Home?**

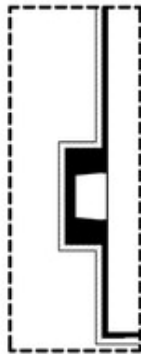
CONTACT OUR COMMUNITY SALES MANAGER
 Call Us @ 470.514.6999



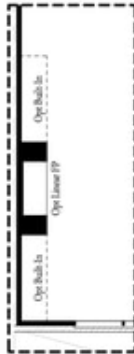
*Opt. Shower
 on First Floor Bath*



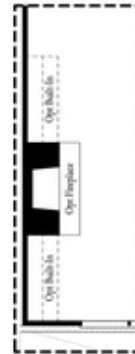
*Opt. Elevator
 on First Floor*



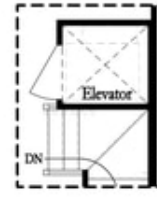
Opt. External Fireplace



Opt. Linear Fireplace



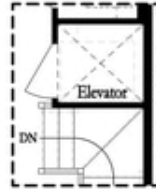
Opt. Fireplace



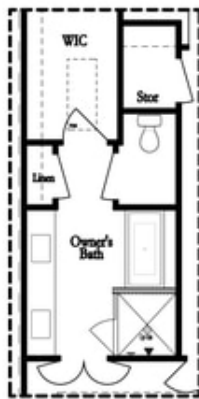
*Opt. Elevator
 on Second Floor*

**Want to Know More
 About This Home?**

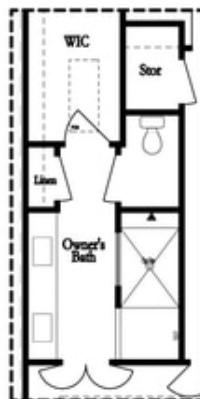
CONTACT OUR COMMUNITY SALES MANAGER
 Call Us @ 470.514.6999



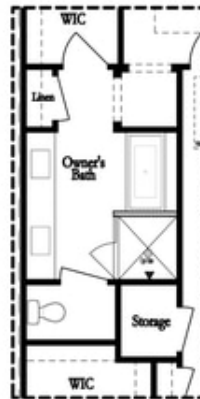
*Opt. Elevator
 on Third Floor*



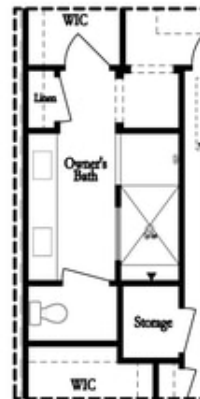
*Opt. Free Standing
 Tub w/ Shower*



Opt. Walk-Through Shower



*Opt. Free Standing
 Tub w/ Shower*



Opt. Walk-Through Shower

**Want to Know More
 About This Home?**

CONTACT OUR COMMUNITY SALES MANAGER
 Call Us @ 470.514.6999