



PRICED AT  
**\$656,515**

 2290 Sq Ft

 3 Beds

 3.5 Baths

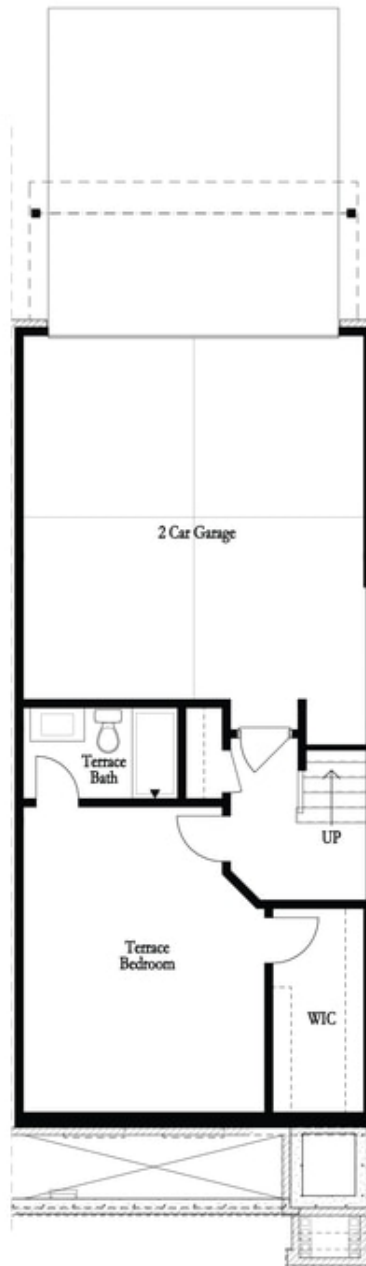
 2 Car Garage

 3.0 Story

Elevate your life in 2023 with a new home by The Providence Group and \$5,000 towards closing cost when financing with one of Seller's 4 preferred lenders. Comfortable and Beautiful! Quick Move-In Rare Benton II Unit at Waterside. Separate Sunroom- perfect for an office without having to use a bedroom! Separate Bed/Bath on Terrace level for privacy. Family room with gas Linear Fireplace and box beam mantle. Upgraded cabinets, Cambria countertops, stainless steel appliances and large island with view to dining and family room. Three sides brick building located in Peachtree Corners. Come check out this home our wonderful, gated, Master Planned Community backing up to the Chattahoochee River. Take a walk down by the river or enjoy one of our many amenities that are under construction: pool, clubhouse, fitness center, green lawn spaces, fire pit areas, and a pool deck - Amenities opening Fall 2023! If you love nature, this is your place! Large space, great plan, and best location. For driving directions, you can use 4411 E. Jones Bridge Road, Peachtree Corners, GA 30092 Photos are not of the exact property but are similar, the home is currently under construction.

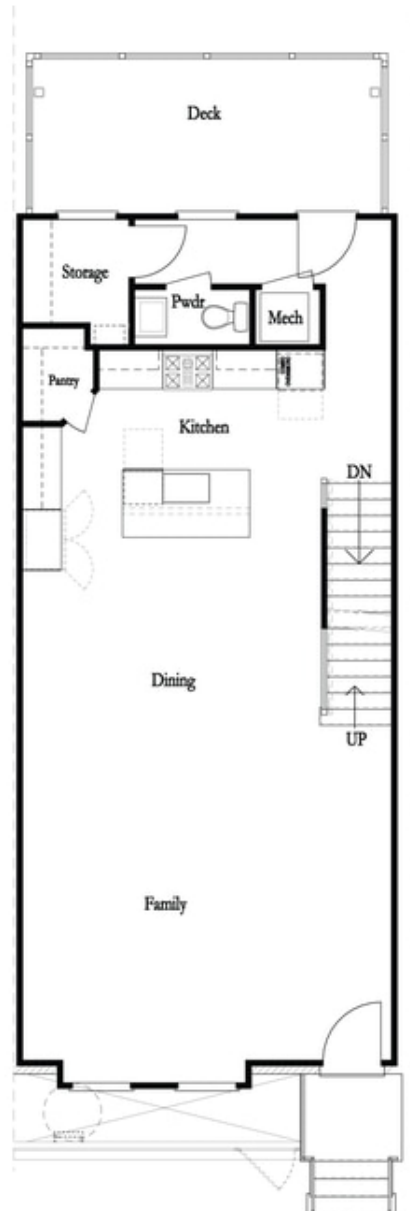
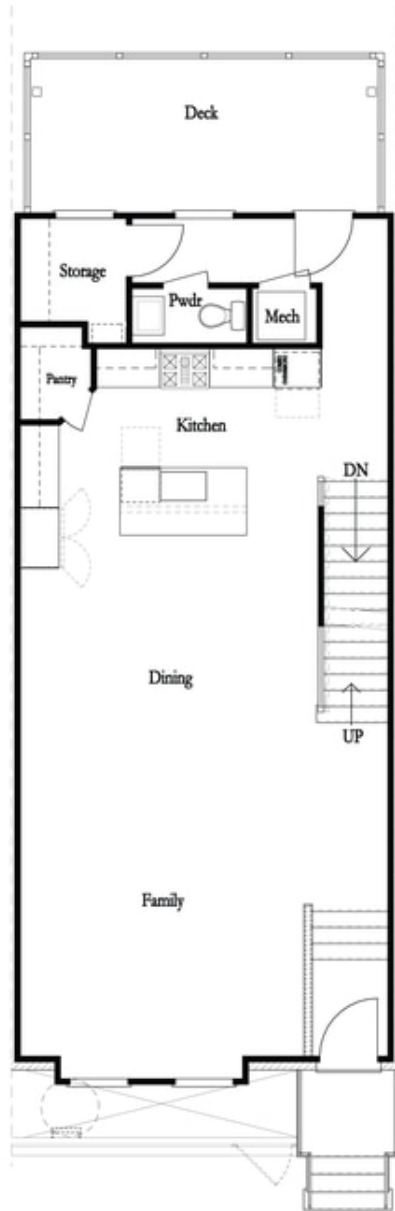
**Want to Know More  
About This Home?**

CONTACT OUR COMMUNITY SALES MANAGER  
Call Us @ 470.514.6999



**Want to Know More  
About This Home?**

CONTACT OUR COMMUNITY SALES MANAGER  
Call Us @ 470.514.6999



**Want to Know More  
About This Home?**

CONTACT OUR COMMUNITY SALES MANAGER  
Call Us @ 470.514.6999



**Want to Know More  
About This Home?**

CONTACT OUR COMMUNITY SALES MANAGER  
Call Us @ 470.514.6999

\* Not All Options are Available in All Communities



Left End  
Opt. Sprinkler Room

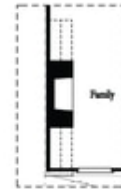


Right End  
Opt. Sprinkler Room

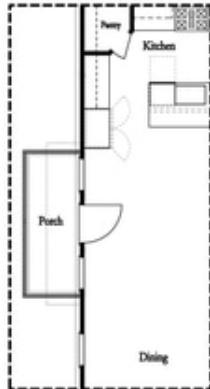
Terrace Level Options



Laundry with Optional Bedroom 3 Only



Opt. 36" Fireplace



Optional Side Porch  
\*End Unit Only



Opt. Sunroom



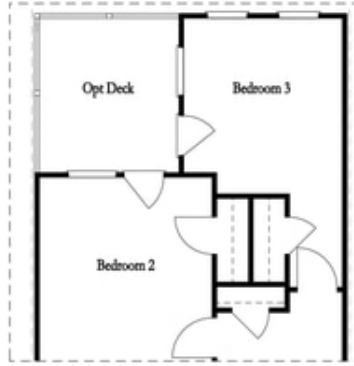
Opt. Linear Fireplace

Main Level Options

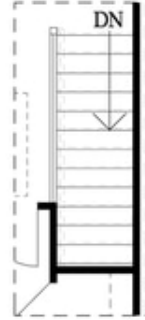
Want to Know More  
About This Home?

CONTACT OUR COMMUNITY SALES MANAGER  
Call Us @ 470.514.6999

Options



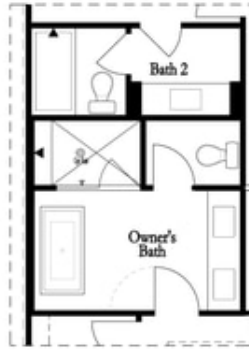
*Opt. Bedroom 3*  
*\*Only available w/ sunroom option*  
*\*Laundry moved to main floor w/ this opt.*



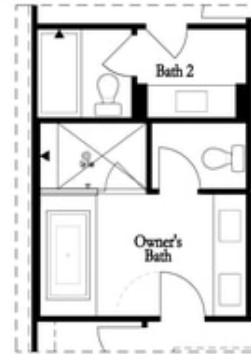
*Opt. Open Rail*



*Opt. Walk-Through Shower*



*Opt. Freestanding Tub/Shower Combo*



*Opt. Decked Tub/Shower Combo*

Third Floor Options

**Want to Know More  
 About This Home?**

CONTACT OUR COMMUNITY SALES MANAGER  
 Call Us @ 470.514.6999