



PRICED AT  
**\$663,185**

 **2233 Sq Ft**

 **3 Beds**

 **2.5 Baths**

 **2 Car Garage**

 **2.0 Story**

Elevate your life in 2023 with a new home by The Providence Group and \$5,000 towards closing cost when financing with one of Seller's preferred lenders. Waterside is the newest community in Peachtree Corners! The Ellington is a Two-story Townhome with a fenced backyard and elevator shaft! Relax in the soaking tub in the owner's suite and fall in love with this spacious owner's closet! Cambria Quartz countertops in the kitchen, Huge sliding glass door leading to your fenced back yard. Hardwood floors throughout the main level plus the owner's bedroom. Located one minute from the entertainment at The Forum. Feel free to drive, walk, bike or run to restaurants, shopping, breweries, movies, and festivals. Waterside is nestled around the Chattahoochee River. We will have trails all along the river, the perfect spot to get away from the hustle and bustle! Then stop by the overlook, grab a cocktail and enjoy the serene atmosphere. If your ready for a little exercise, there will be a fitness center inside the elegant clubhouse. Rather exercise outdoors, grab a paddle and pick up a pickleball game. We will have 4 courts for you to enjoy. Take a dive in the pool or hang ...

**Want to Know More  
About This Home?**

**CONTACT OUR COMMUNITY SALES MANAGER**  
**Call Us @ 470.514.6999**

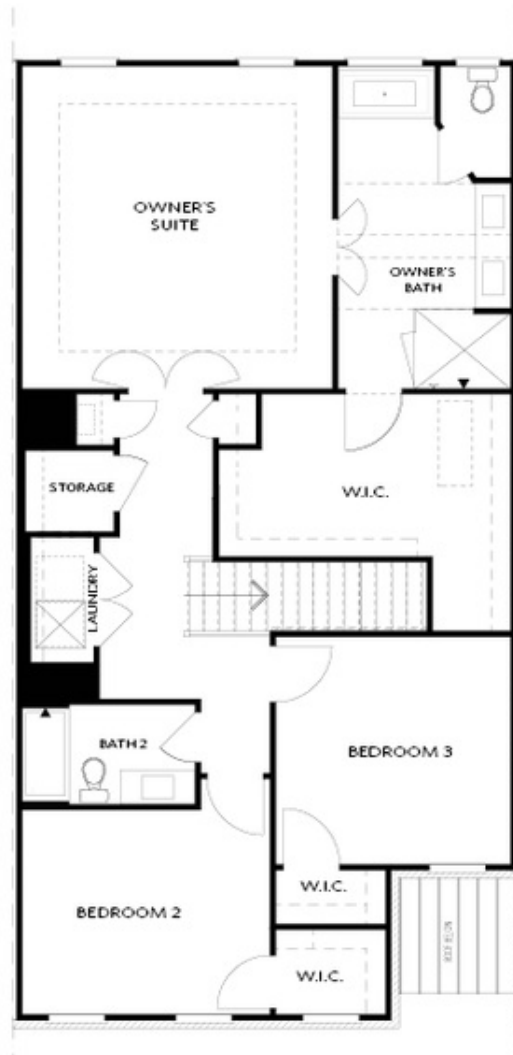


FIRST FLOOR

Elevation C, I, K

Want to Know More  
About This Home?

CONTACT OUR COMMUNITY SALES MANAGER  
Call Us @ 470.514.6999

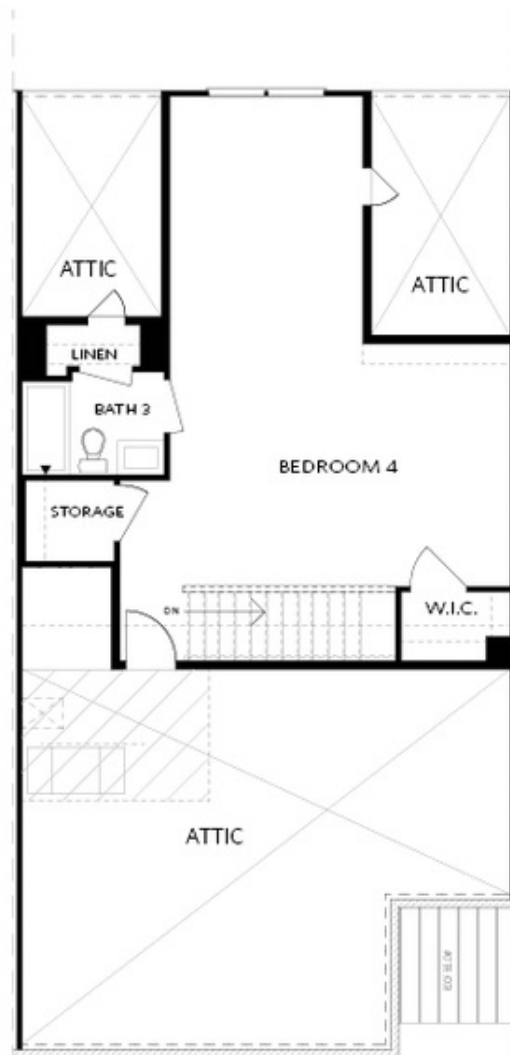


SECOND FLOOR

Elevation C, I, K

Want to Know More  
About This Home?

CONTACT OUR COMMUNITY SALES MANAGER  
Call Us @ 470.514.6999

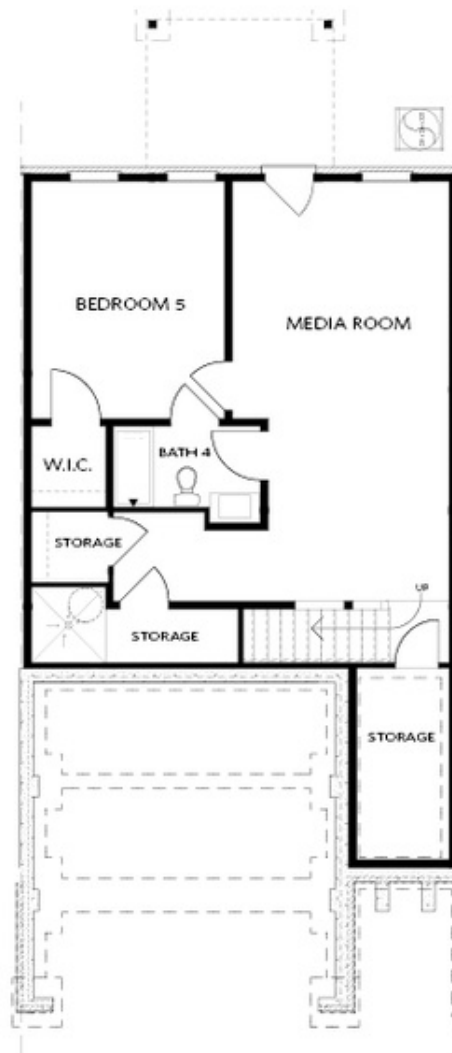


THIRD FLOOR

Elevation C, I, K

Want to Know More  
About This Home?

CONTACT OUR COMMUNITY SALES MANAGER  
Call Us @ 470.514.6999

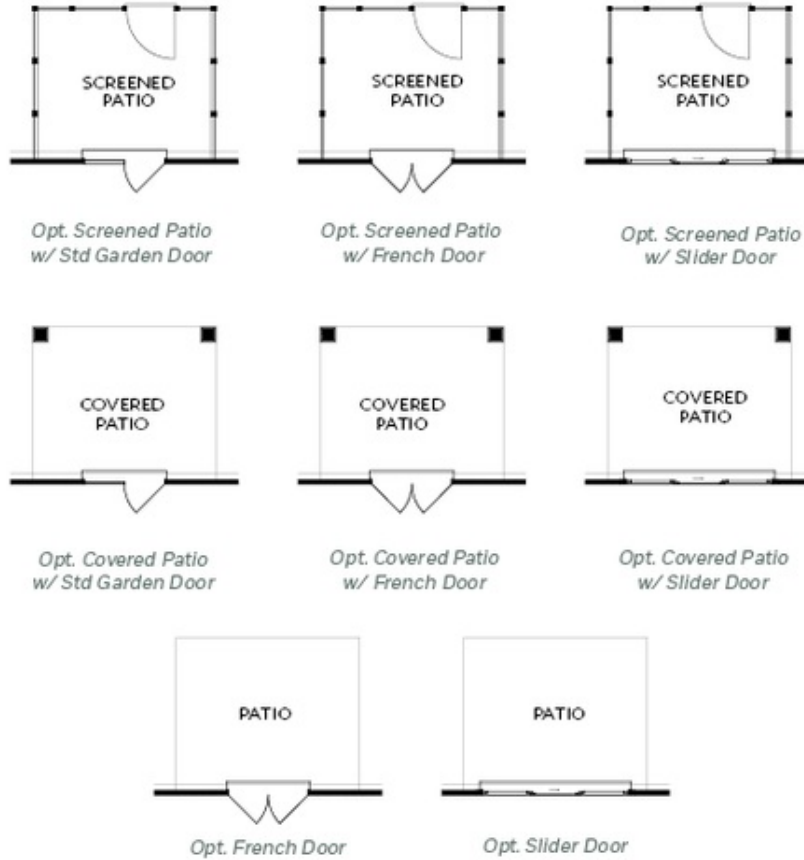


**BASEMENT**

Elevation C, I, K

**Want to Know More  
About This Home?**

**CONTACT OUR COMMUNITY SALES MANAGER**  
**Call Us @ 470.514.6999**



FIRST FLOOR  
 PATIO OPTIONS  
 ON A SLAB

Want to Know More  
 About This Home?

CONTACT OUR COMMUNITY SALES MANAGER  
 Call Us @ 470.514.6999



*Opt. Screened Deck  
w/ Std Garden Door*



*Opt. Screened Deck  
w/ French Door*



*Opt. Screened Deck  
w/ Slider Door*



*Opt. Covered Deck  
w/ Std Garden Door*



*Opt. Covered Patio  
w/ French Door*



*Opt. Covered Deck  
w/ Slider Door*



*Opt. French Door*



*Opt. Slider Door*

FIRST FLOOR  
DECK OPTIONS  
ON A BASEMENT

Want to Know More  
About This Home?

CONTACT OUR COMMUNITY SALES MANAGER  
Call Us @ 470.514.6999



*Opt. Elevator  
 First Floor*



*Opt. Fireplace*



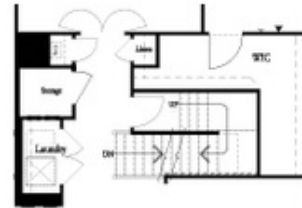
*Opt. Linear Fireplace*



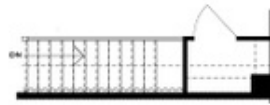
*Owner's Suite & Bath  
 \*No Trey or Vaulted Ceilings w/ 3rd Floor*



*Opt. Elevator  
 Second Floor*



*2nd Floor Stairs to 3rd Floor*



*Opt. Open Rail on 3rd Floor*



*Opt. Elevator  
 Third Floor*

OPTIONS  
 ON A SLAB  
 WITH 3RD FLOOR

**Want to Know More  
 About This Home?**

**CONTACT OUR COMMUNITY SALES MANAGER**  
**Call Us @ 470.514.6999**





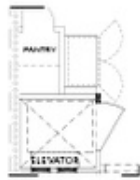
*Opt. Shower*



*Opt. Wet Bar*



*Opt. Elevator  
 Basement*



*Opt. Elevator  
 First Floor*



*Opt. Fireplace*



*Opt. Linear Fireplace*



*Opt. Elevator  
 Second Floor*

**OPTIONS  
 ON A BASEMENT**

**Want to Know More  
 About This Home?**

**CONTACT OUR COMMUNITY SALES MANAGER**  
**Call Us @ 470.514.6999**