



PRICED AT  
**\$675,115**

 **2233 Sq Ft**

 **3 Beds**

 **4.5 Baths**

 **2 Car Garage**

 **2.0 Story**

**NEW 2-STORY TOWNHOUSE with elevator capability! - Large Floorplan, abundant natural light gleams throughout the entire home. Hardwood floors throughout main level, floor to ceiling fireplace. Loaded with beautiful design upgrades, buyer can still go to Design Studio and pick their finishes! Oversized Master Bedroom, tub and shower in large Master bathroom. Huge closets! Two additional rooms, all bedrooms upstairs. Amazing location - Located minutes from The Forum. New Gated Master Planned Community is backing up to the Chattahoochee River, surrounded by beautiful, lush trees and the opportunity to take a walk down to the River or enjoy state of the art amenities w/Swim, fitness, parks, clubhouse, etc. Community w/single family & townhomes. State of the art amenity with Pool, Sun Deck with River view, three Great Lawns, Pickleball Courts, an Outdoor Bar, Pavillion and more! Pictures do not represent actual homesite. Completion for actual homesite late Spring 2023. For driving directions, you can use 4411 E. Jones Bridge Road, Peachtree Corners, GA 30092.**

**Want to Know More  
About This Home?**

**CONTACT OUR COMMUNITY SALES MANAGER**  
**Call Us @ 470.514.6999**

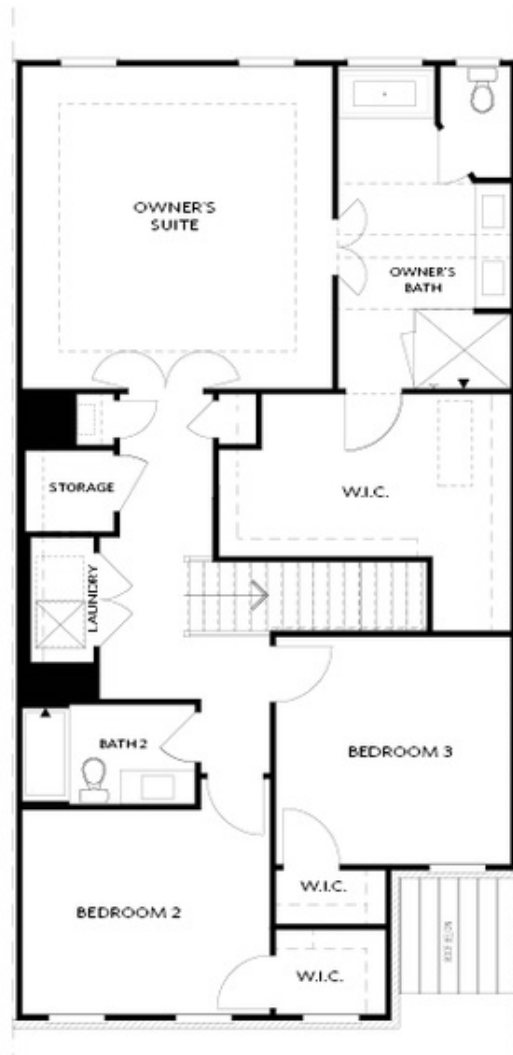


FIRST FLOOR

Elevation C, I, K

Want to Know More  
About This Home?

CONTACT OUR COMMUNITY SALES MANAGER  
Call Us @ 470.514.6999

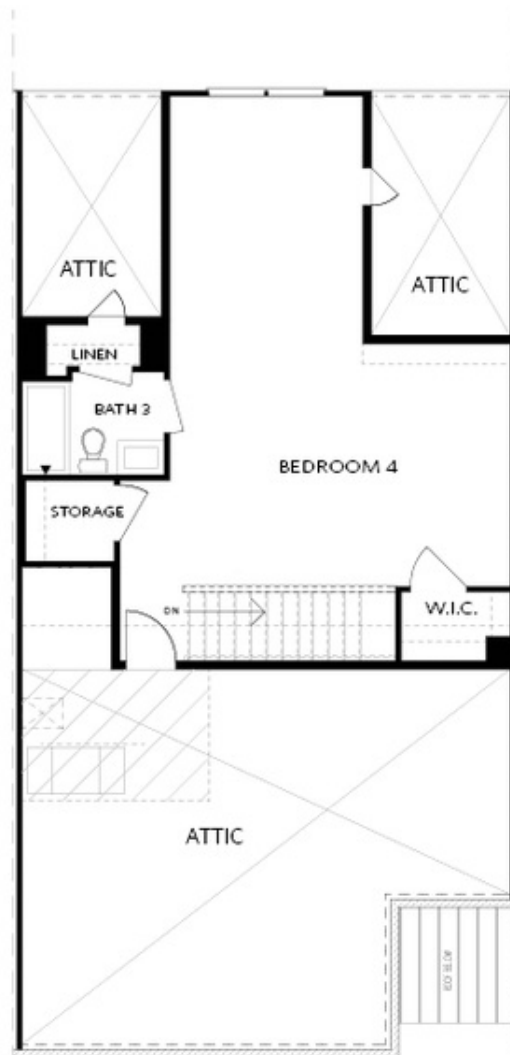


SECOND FLOOR

Elevation C, I, K

Want to Know More  
About This Home?

CONTACT OUR COMMUNITY SALES MANAGER  
Call Us @ 470.514.6999

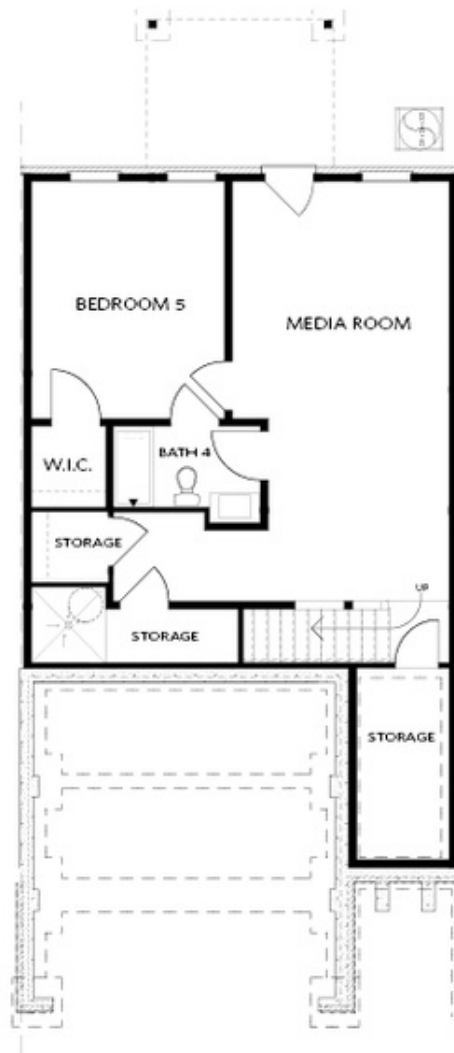


THIRD FLOOR

Elevation C, I, K

Want to Know More  
About This Home?

CONTACT OUR COMMUNITY SALES MANAGER  
Call Us @ 470.514.6999

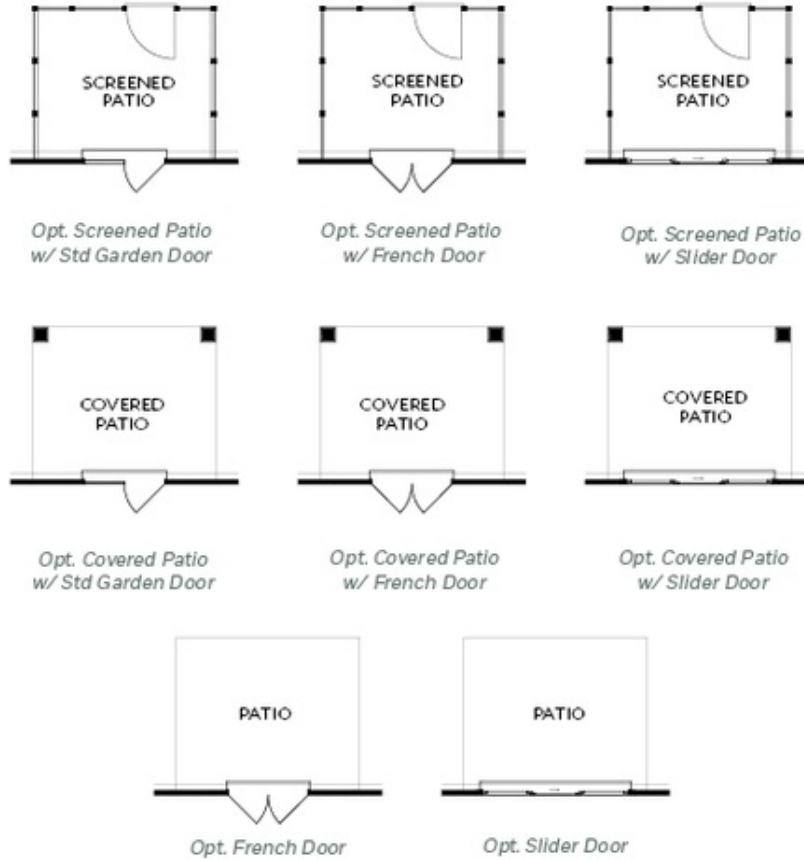


**BASEMENT**

Elevation C, I, K

**Want to Know More  
About This Home?**

**CONTACT OUR COMMUNITY SALES MANAGER**  
**Call Us @ 470.514.6999**



FIRST FLOOR  
 PATIO OPTIONS  
 ON A SLAB

Want to Know More  
 About This Home?

CONTACT OUR COMMUNITY SALES MANAGER  
 Call Us @ 470.514.6999



*Opt. Screened Deck  
w/ Std Garden Door*



*Opt. Screened Deck  
w/ French Door*



*Opt. Screened Deck  
w/ Slider Door*



*Opt. Covered Deck  
w/ Std Garden Door*



*Opt. Covered Patio  
w/ French Door*



*Opt. Covered Deck  
w/ Slider Door*



*Opt. French Door*

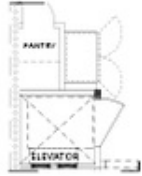


*Opt. Slider Door*

FIRST FLOOR  
DECK OPTIONS  
ON A BASEMENT

Want to Know More  
About This Home?

CONTACT OUR COMMUNITY SALES MANAGER  
Call Us @ 470.514.6999



*Opt. Elevator  
 First Floor*



*Opt. Fireplace*



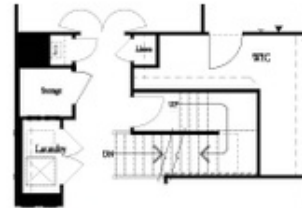
*Opt. Linear Fireplace*



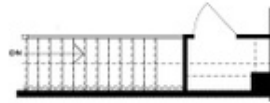
*Owner's Suite & Bath  
 \*No Trey or Vaulted Ceilings w/ 3rd Floor*



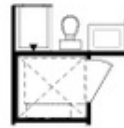
*Opt. Elevator  
 Second Floor*



*2nd Floor Stairs to 3rd Floor*



*Opt. Open Rail on 3rd Floor*



*Opt. Elevator  
 Third Floor*

OPTIONS  
 ON A SLAB  
 WITH 3RD FLOOR

**Want to Know More  
 About This Home?**

**CONTACT OUR COMMUNITY SALES MANAGER**  
**Call Us @ 470.514.6999**





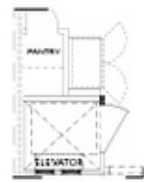
*Opt. Shower*



*Opt. Wet Bar*



*Opt. Elevator  
 Basement*



*Opt. Elevator  
 First Floor*



*Opt. Fireplace*



*Opt. Linear Fireplace*



*Opt. Elevator  
 Second Floor*

**OPTIONS  
 ON A BASEMENT**

**Want to Know More  
 About This Home?**

**CONTACT OUR COMMUNITY SALES MANAGER**  
**Call Us @ 470.514.6999**