



PRICED AT  
**\$663,140**

 **2233 Sq Ft**

 **3 Beds**

 **2.5 Baths**

 **2 Car Garage**

 **2.0 Story**

Elevate your life in 2023 with a new home by The Providence Group and \$5,000 towards closing cost when financing with one of Seller's 4 preferred lenders. Open the DOOR! Linear fireplace in the family room with a stacked stone surround from floor to ceiling- Beautiful! Hardwood floors throughout the main level plus the owner's bedroom. Gourmet kitchen with GE Gas Cooktop, microwave/oven combo, dishwasher & a single bowl kitchen sink. All of your friends will be jealous over the kitchen island, it's over 10' long. Perfect spot for entertaining- just think how many charcuterie boards you could fit on this island. 9' ceilings on the main level with 8' doors. Having taller doors takes your home to a new level. 7 EXTRA windows for this end unit - natural light galore. Tired of stairs? No problem, built-in elevator shaft so you can add the elevator at any time! Not to mention, this home is located on a very nice lot, not really close to the next building beside it. This 2 story townhome also comes with a fenced backyard! All of this is located right off E Jones Bridge. The city has recently widened the sidewalk down E Jones ...

Want to Know More  
About This Home?

CONTACT OUR COMMUNITY SALES MANAGER  
Call Us @ 470.514.6999

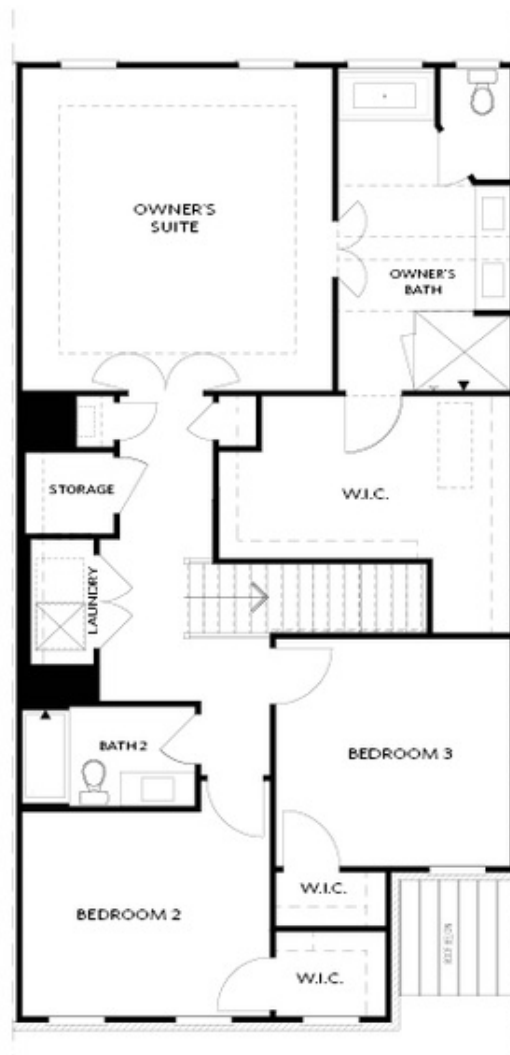


FIRST FLOOR

Elevation C, I, K

Want to Know More  
About This Home?

CONTACT OUR COMMUNITY SALES MANAGER  
Call Us @ 470.514.6999

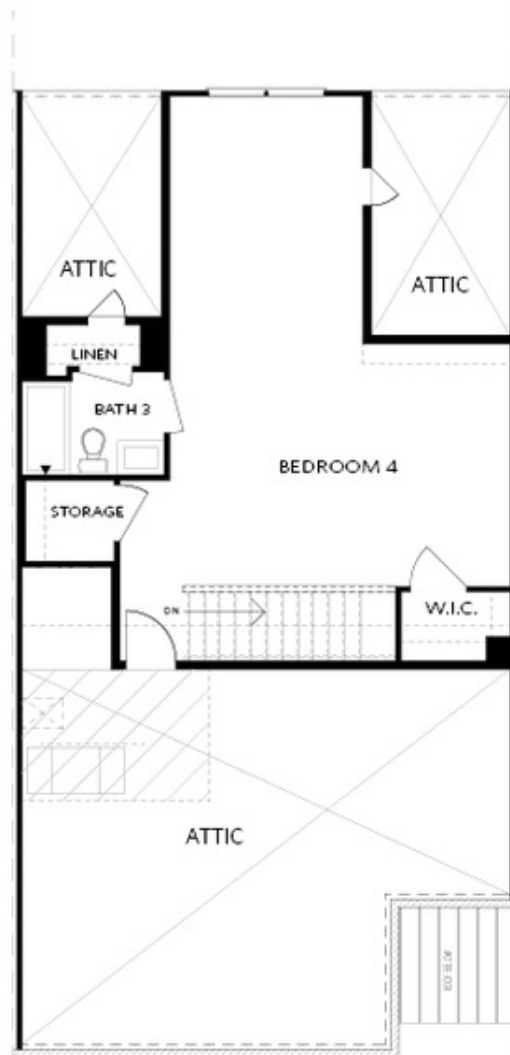


SECOND FLOOR

Elevation C, I, K

Want to Know More  
About This Home?

CONTACT OUR COMMUNITY SALES MANAGER  
Call Us @ 470.514.6999

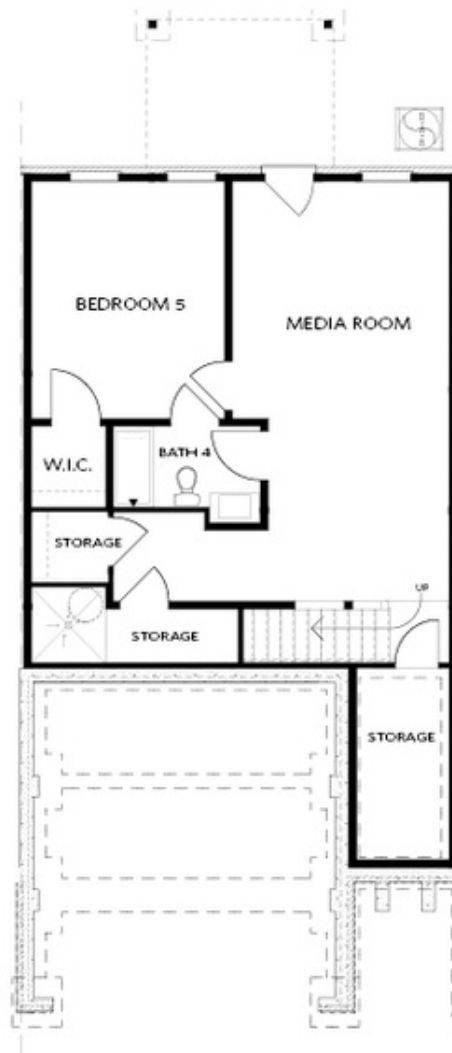


THIRD FLOOR

Elevation C, I, K

Want to Know More  
About This Home?

CONTACT OUR COMMUNITY SALES MANAGER  
Call Us @ 470.514.6999



BASEMENT

Elevation C, I, K

Want to Know More  
About This Home?

CONTACT OUR COMMUNITY SALES MANAGER  
Call Us @ 470.514.6999



*Opt. Screened Patio  
 w/ Std Garden Door*



*Opt. Screened Patio  
 w/ French Door*



*Opt. Screened Patio  
 w/ Slider Door*



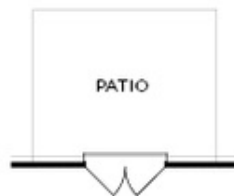
*Opt. Covered Patio  
 w/ Std Garden Door*



*Opt. Covered Patio  
 w/ French Door*



*Opt. Covered Patio  
 w/ Slider Door*



*Opt. French Door*

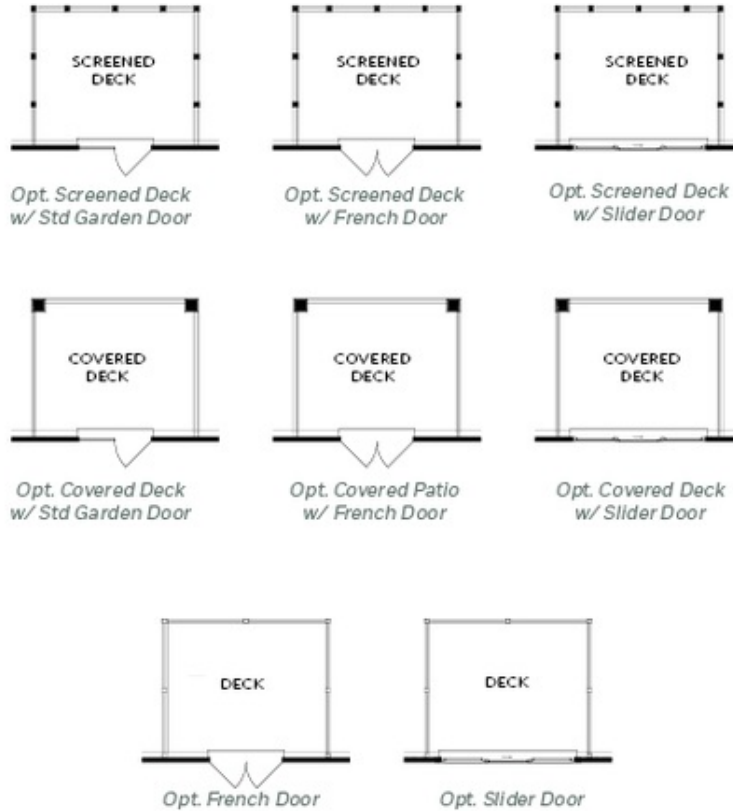


*Opt. Slider Door*

FIRST FLOOR  
 PATIO OPTIONS  
 ON A SLAB

Want to Know More  
 About This Home?

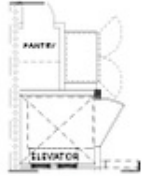
CONTACT OUR COMMUNITY SALES MANAGER  
 Call Us @ 470.514.6999



FIRST FLOOR  
 DECK OPTIONS  
 ON A BASEMENT

Want to Know More  
 About This Home?

CONTACT OUR COMMUNITY SALES MANAGER  
 Call Us @ 470.514.6999



*Opt. Elevator  
 First Floor*



*Opt. Fireplace*



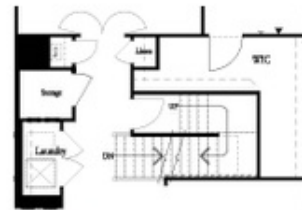
*Opt. Linear Fireplace*



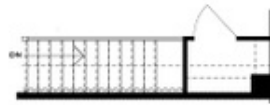
*Owner's Suite & Bath  
 \*No Trey or Vaulted Ceilings w/ 3rd Floor*



*Opt. Elevator  
 Second Floor*



*2nd Floor Stairs to 3rd Floor*



*Opt. Open Rail on 3rd Floor*



*Opt. Elevator  
 Third Floor*

OPTIONS  
 ON A SLAB  
 WITH 3RD FLOOR

**Want to Know More  
 About This Home?**

**CONTACT OUR COMMUNITY SALES MANAGER**  
**Call Us @ 470.514.6999**





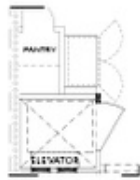
*Opt. Shower*



*Opt. Wet Bar*



*Opt. Elevator  
 Basement*



*Opt. Elevator  
 First Floor*



*Opt. Fireplace*



*Opt. Linear Fireplace*



*Opt. Elevator  
 Second Floor*

**OPTIONS  
 ON A BASEMENT**

**Want to Know More  
 About This Home?**

**CONTACT OUR COMMUNITY SALES MANAGER**  
**Call Us @ 470.514.6999**