



PRICED AT
\$646,590

 **2233 Sq Ft**

 **3 Beds**

 **2.5 Baths**

 **2 Car Garage**

 **2.0 Story**

Elevate your life in 2023 with a new home by The Providence Group and \$5,000 towards closing cost when financing with one of Seller's 4 preferred lenders. The whole package! A 2-story Townhome with a fenced backyard and elevator shaft! Relax in the free-standing tub in the owner's bathroom. The owner's bathroom has 2 windows giving you abundant light in the place you need it most. Quartz countertops in the kitchen, Huge sliding glass door leading to your fenced back yard. Hardwood floors throughout the main level plus the owner's bedroom. Located one minute from the FUN at The Forum. Feel free to drive, walk, bike or run to restaurants, shopping, breweries, movies, and festivals. The back edge of Waterside meets the Chattahoochee River. We will have trails all along the river- the perfect spot to get away from the hustle and bustle! Then stop by one of the many fire pits throughout the neighborhood. Dump your fitness membership, there will be a fitness center inside the elegant clubhouse. Or get your heart rate up with a game of pickleball. We will have 4 courts for you to choose from. Take a dive in the pool or hang out on ...

Want to Know More
About This Home?

CONTACT OUR COMMUNITY SALES MANAGER
Call Us @ 470.514.6999

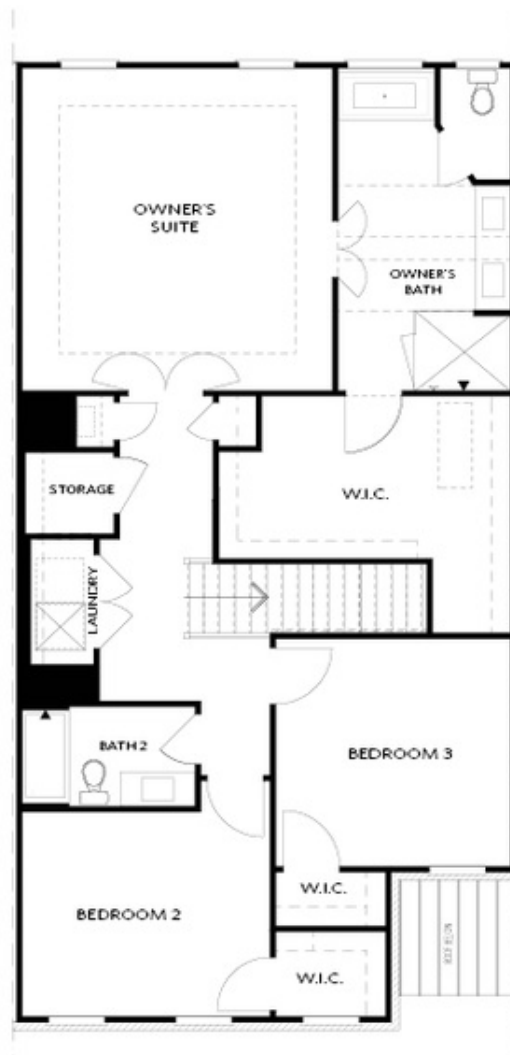


FIRST FLOOR

Elevation C, I, K

Want to Know More
About This Home?

CONTACT OUR COMMUNITY SALES MANAGER
Call Us @ 470.514.6999

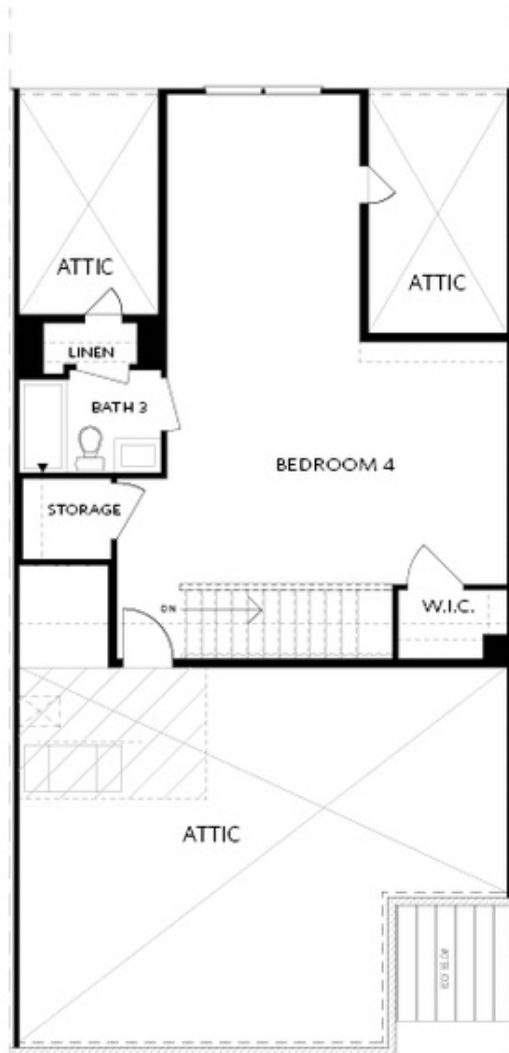


SECOND FLOOR

Elevation C, I, K

Want to Know More
About This Home?

CONTACT OUR COMMUNITY SALES MANAGER
Call Us @ 470.514.6999

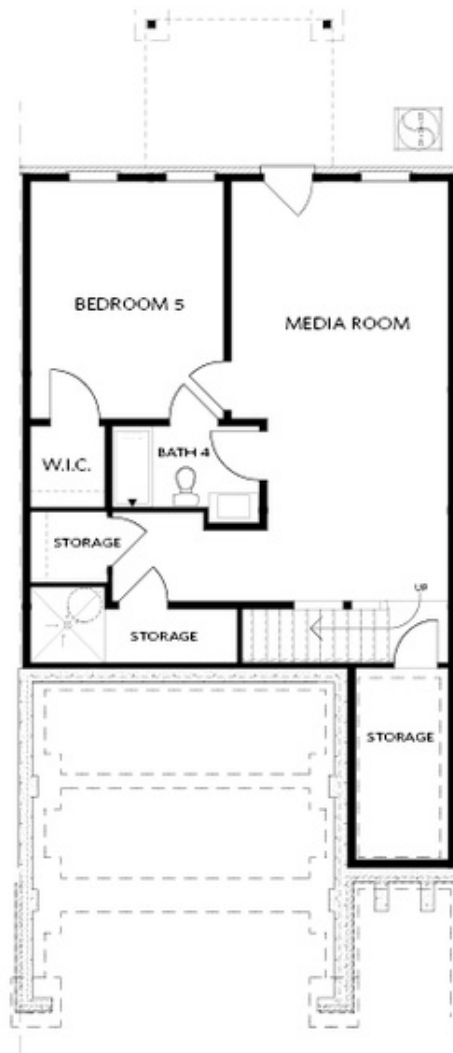


THIRD FLOOR

Elevation C, I, K

Want to Know More
About This Home?

CONTACT OUR COMMUNITY SALES MANAGER
Call Us @ 470.514.6999

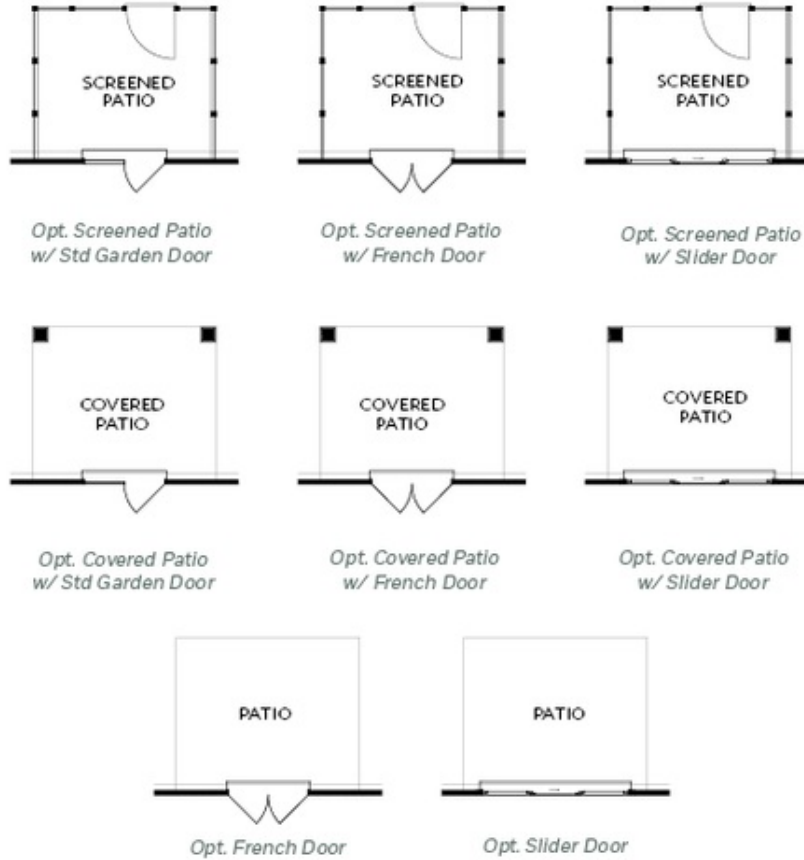


BASEMENT

Elevation C, I, K

Want to Know More
About This Home?

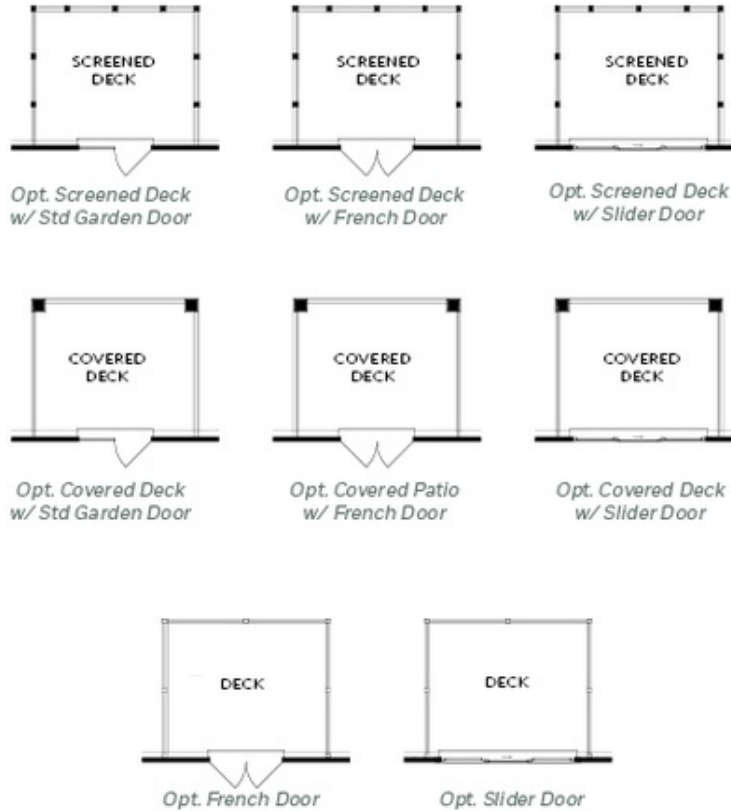
CONTACT OUR COMMUNITY SALES MANAGER
Call Us @ 470.514.6999



FIRST FLOOR
 PATIO OPTIONS
 ON A SLAB

Want to Know More
 About This Home?

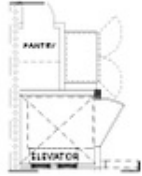
CONTACT OUR COMMUNITY SALES MANAGER
 Call Us @ 470.514.6999



FIRST FLOOR
DECK OPTIONS
ON A BASEMENT

Want to Know More
About This Home?

CONTACT OUR COMMUNITY SALES MANAGER
Call Us @ 470.514.6999



*Opt. Elevator
 First Floor*



Opt. Fireplace



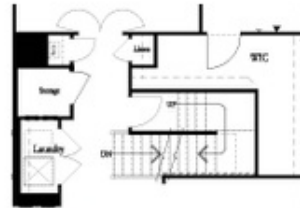
Opt. Linear Fireplace



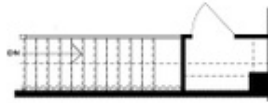
*Owner's Suite & Bath
 No Trey or Vaulted Ceilings w/ 3rd Floor



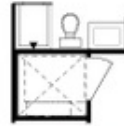
*Opt. Elevator
 Second Floor*



2nd Floor Stairs to 3rd Floor



Opt. Open Rail on 3rd Floor



*Opt. Elevator
 Third Floor*

OPTIONS
 ON A SLAB
 WITH 3RD FLOOR

**Want to Know More
 About This Home?**

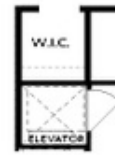
CONTACT OUR COMMUNITY SALES MANAGER
Call Us @ 470.514.6999



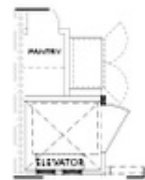
Opt. Shower



Opt. Wet Bar



*Opt. Elevator
 Basement*



*Opt. Elevator
 First Floor*



Opt. Fireplace



Opt. Linear Fireplace



*Opt. Elevator
 Second Floor*

**OPTIONS
 ON A BASEMENT**

**Want to Know More
 About This Home?**

CONTACT OUR COMMUNITY SALES MANAGER
Call Us @ 470.514.6999