



PRICED AT
\$675,320

 **2233 Sq Ft**

 **3 Beds**

 **2.5 Baths**

 **2 Car Garage**

 **2.0 Story**

Elevate your life in 2023 with a new home by The Providence Group and \$5,000 towards closing cost when financing with one of Seller's 4 preferred lenders. This end-unit townhome is waiting for its first owners. Hardwood floors throughout the main level and the owner's bedroom. Tons of matte black and gold hardware thought out the home including faucets, lighting, and door hardware. Fenced backyard that is maintained by the HOA! Say NO to stairs- the home comes with an elevator shaft. If you added the elevator, it would be a short ride, only having to go up one floor since the Ellington Home design is 2 stories. Waterside is located one minute from The Forum. The city has recently widened the sidewalk leading from the community to The Forum. Makes it easy to walk, run or bike to entertainment and activities. Waterside meets the Chattahoochee River. Enjoy trails along the River! Jones bridge park is less than a mile from Waterside, if you enjoy kayaking this will be your spot. In the process of building a massive clubhouse with a fitness center. After a long workout, dive into the pool or take a breather at our pool deck looking ...

Want to Know More
About This Home?

CONTACT OUR COMMUNITY SALES MANAGER
Call Us @ 470.514.6999

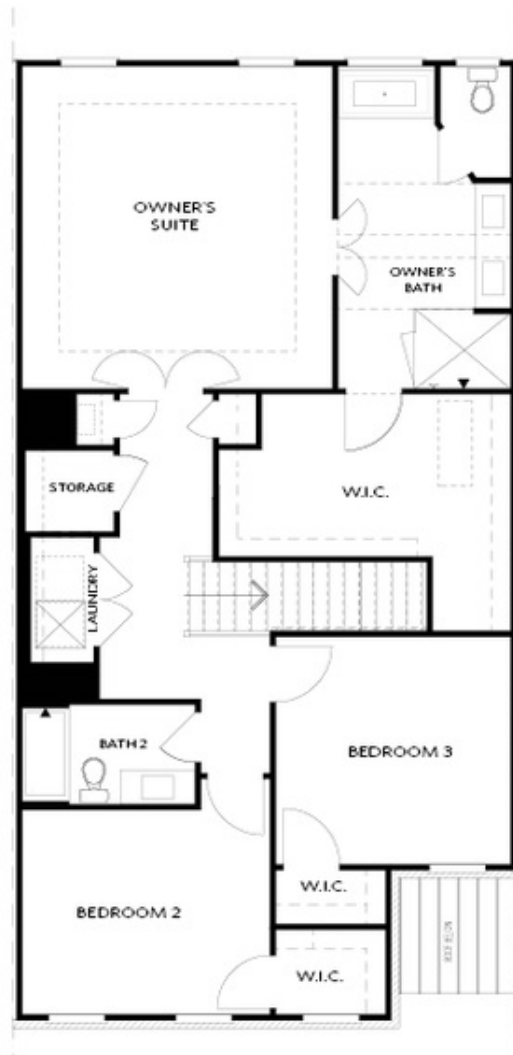


FIRST FLOOR

Elevation C, I, K

Want to Know More
About This Home?

CONTACT OUR COMMUNITY SALES MANAGER
Call Us @ 470.514.6999

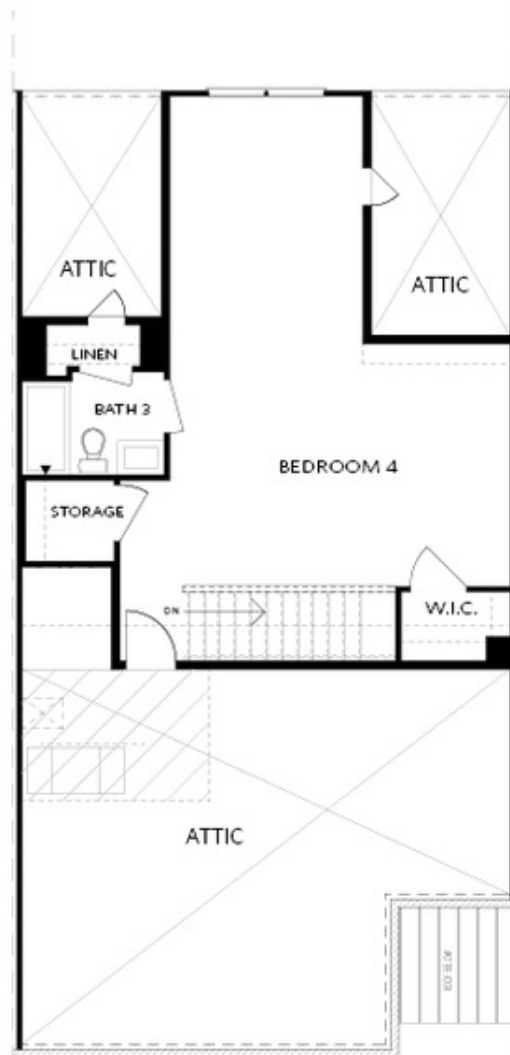


SECOND FLOOR

Elevation C, I, K

Want to Know More
About This Home?

CONTACT OUR COMMUNITY SALES MANAGER
Call Us @ 470.514.6999

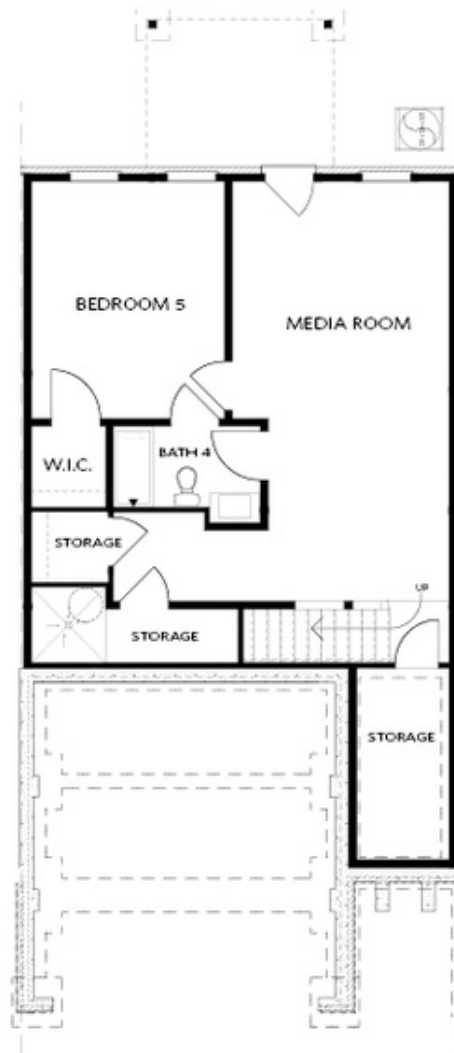


THIRD FLOOR

Elevation C, I, K

Want to Know More
About This Home?

CONTACT OUR COMMUNITY SALES MANAGER
Call Us @ 470.514.6999

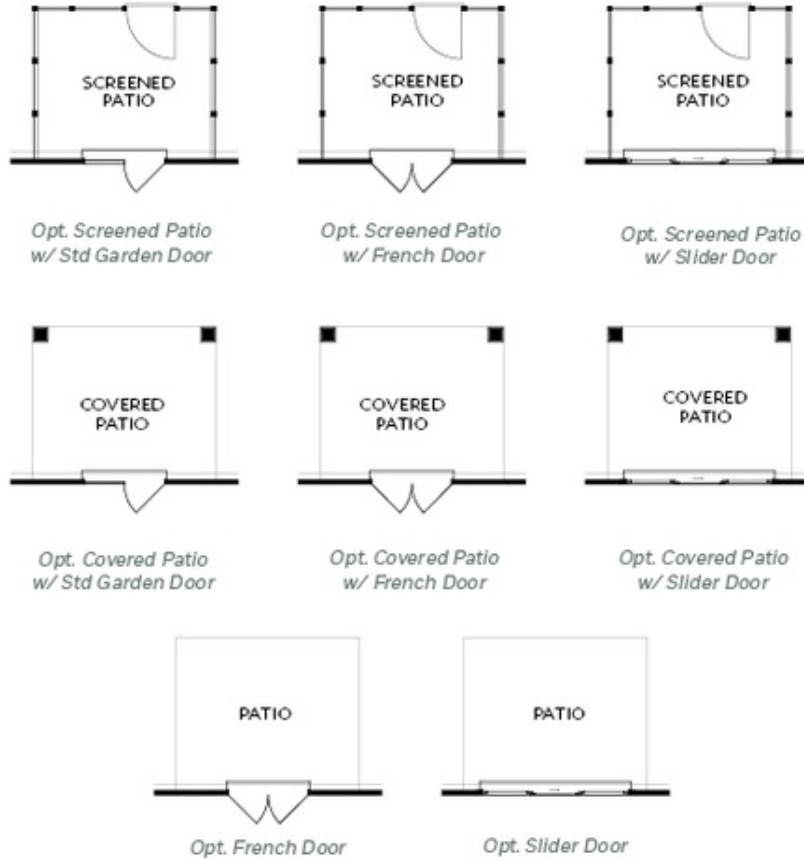


BASEMENT

Elevation C, I, K

**Want to Know More
About This Home?**

CONTACT OUR COMMUNITY SALES MANAGER
Call Us @ 470.514.6999



FIRST FLOOR
 PATIO OPTIONS
 ON A SLAB

Want to Know More
 About This Home?

CONTACT OUR COMMUNITY SALES MANAGER
 Call Us @ 470.514.6999



*Opt. Screened Deck
w/ Std Garden Door*



*Opt. Screened Deck
w/ French Door*



*Opt. Screened Deck
w/ Slider Door*



*Opt. Covered Deck
w/ Std Garden Door*



*Opt. Covered Patio
w/ French Door*



*Opt. Covered Deck
w/ Slider Door*



Opt. French Door

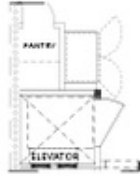


Opt. Slider Door

FIRST FLOOR
DECK OPTIONS
ON A BASEMENT

Want to Know More
About This Home?

CONTACT OUR COMMUNITY SALES MANAGER
Call Us @ 470.514.6999



*Opt. Elevator
 First Floor*



Opt. Fireplace



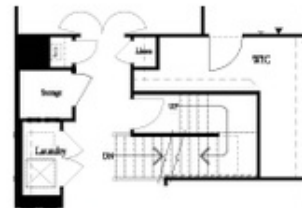
Opt. Linear Fireplace



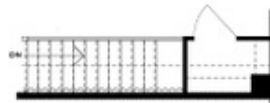
*Owner's Suite & Bath
 No Trey or Vaulted Ceilings w/ 3rd Floor



*Opt. Elevator
 Second Floor*



2nd Floor Stairs to 3rd Floor



Opt. Open Rail on 3rd Floor



*Opt. Elevator
 Third Floor*

OPTIONS
 ON A SLAB
 WITH 3RD FLOOR

**Want to Know More
 About This Home?**

CONTACT OUR COMMUNITY SALES MANAGER
Call Us @ 470.514.6999



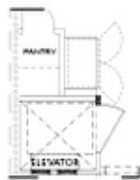
Opt. Shower



Opt. Wet Bar



*Opt. Elevator
 Basement*



*Opt. Elevator
 First Floor*



Opt. Fireplace



Opt. Linear Fireplace



*Opt. Elevator
 Second Floor*

**OPTIONS
 ON A BASEMENT**

**Want to Know More
 About This Home?**

CONTACT OUR COMMUNITY SALES MANAGER
Call Us @ 470.514.6999