

PRICED AT
\$663,110

 2233 Sq Ft

 3 Beds

 2.5 Baths

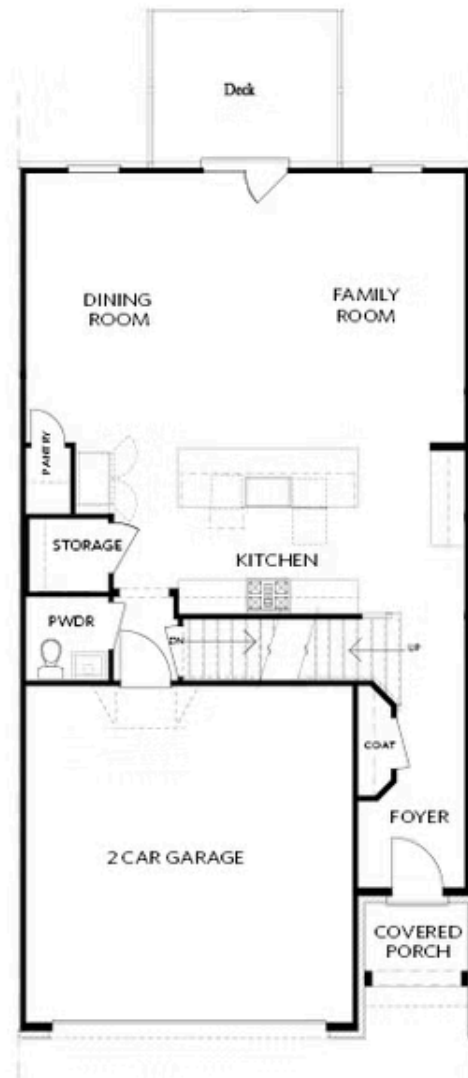
 2 Car Garage

 2.0 Story

Ask About our Fabulous Fall Incentives &/or Available to Close in 2022. Put on the brakes, this is where you need to be with a fenced backyard on a 2-story townhome. Ask About our Fabulous Fall Incentives &/or Available to Close in 2022. End unit maximizes natural light throughout the home. Loaded with upgrades, stacked kitchen cabinets, quartz countertops, hardwood floors on main and in owner's bedroom. 10' ceilings on the main level. Scheduled for a November closing, if sold by 10/31/22 and close by end of December, it comes with a finance incentive of \$20,000 toward closing costs, buy down of rate or prepaids! Located minutes from The Forum. This new community back right up to the Chattahoochee River giving you the opportunity to take a walk down to the River or enjoy state of the art amenities w/Swim, fitness, parks, clubhouse, pickle ball courts etc. Community w/single family & townhomes. Pictures do not represent actual home For driving directions, you can use 4411 E. Jones Bridge Road, Peachtree Corners, GA 30092

**Want to Know More
About This Home?**

CONTACT OUR COMMUNITY SALES MANAGER
Call Us @ 470.514.6999



FIRST FLOOR

Elevation C, I, K

Want to Know More
About This Home?

CONTACT OUR COMMUNITY SALES MANAGER
Call Us @ 470.514.6999

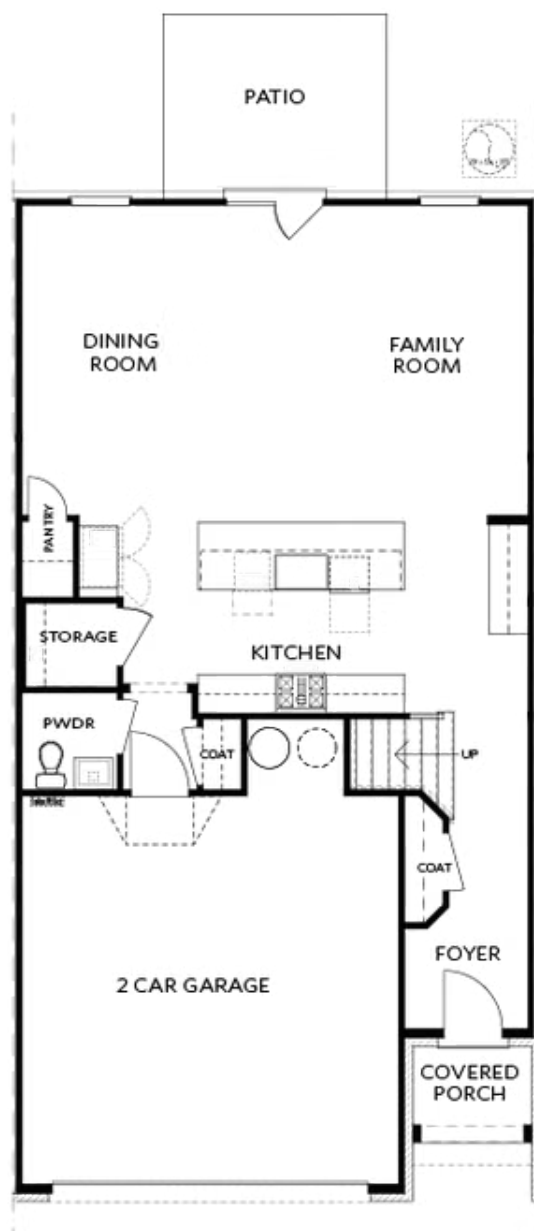


SECOND FLOOR

Elevation C, I, K

Want to Know More
About This Home?

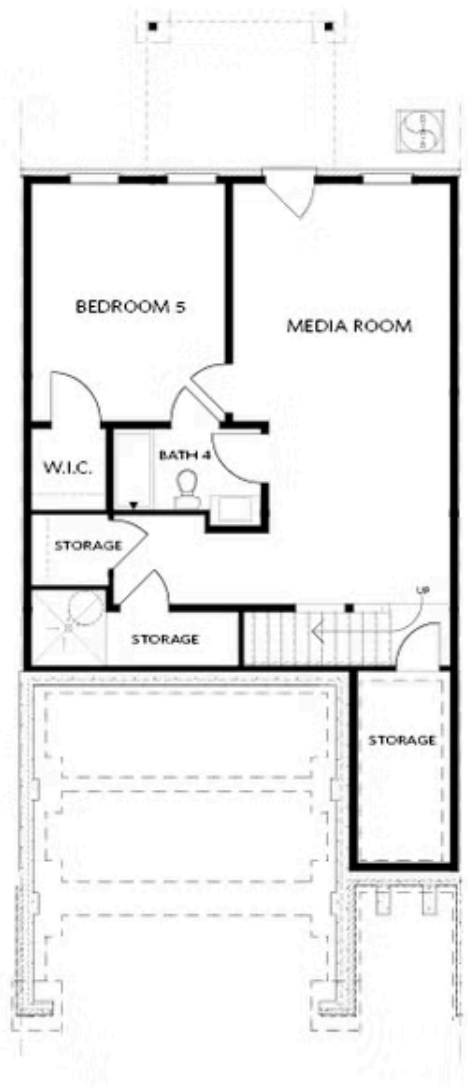
CONTACT OUR COMMUNITY SALES MANAGER
Call Us @ 470.514.6999



Elevations C, I, K

Want to Know More
About This Home?

CONTACT OUR COMMUNITY SALES MANAGER
Call Us @ 470.514.6999

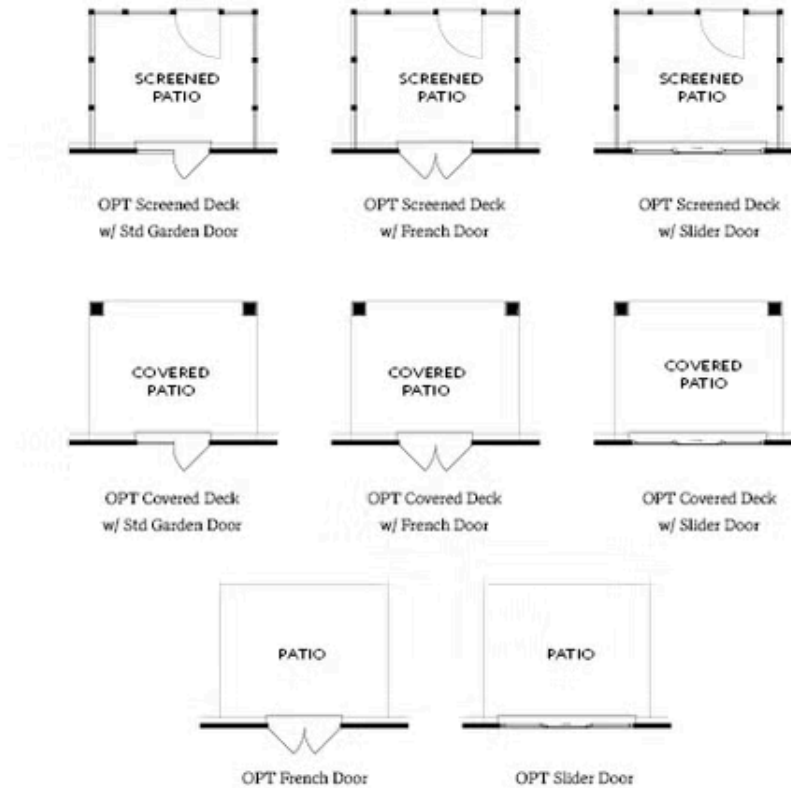


BASEMENT

Elevation C, I, K

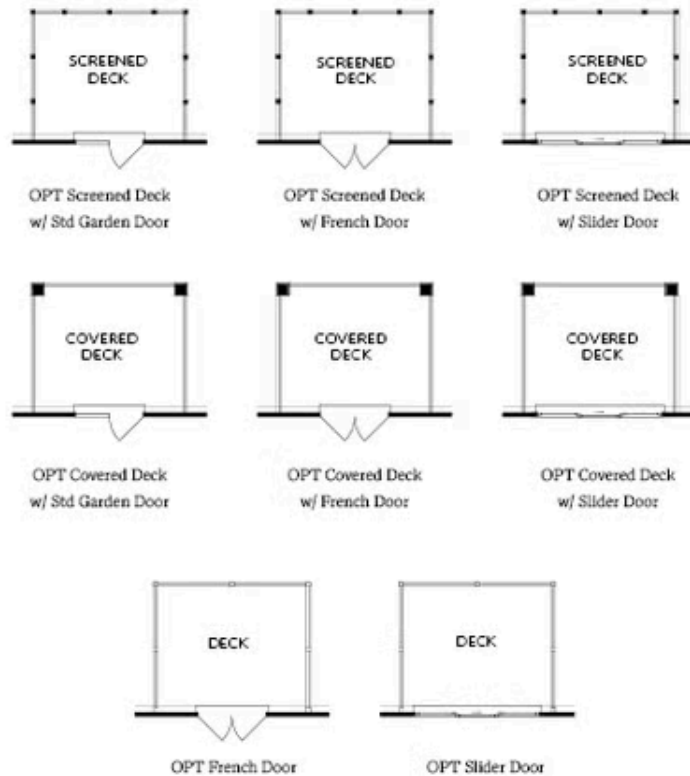
Want to Know More
About This Home?

CONTACT OUR COMMUNITY SALES MANAGER
Call Us @ 470.514.6999



Want to Know More
About This Home?

CONTACT OUR COMMUNITY SALES MANAGER
Call Us @ 470.514.6999

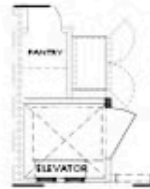


Want to Know More
About This Home?

CONTACT OUR COMMUNITY SALES MANAGER
Call Us @ 470.514.6999



OPT Elevator - Second Floor



OPT Elevator - First Floor



OPT Fireplace



OPT Linear Fireplace

Want to Know More
About This Home?

CONTACT OUR COMMUNITY SALES MANAGER
Call Us @ 470.514.6999



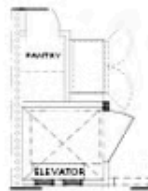
OPT Shower - Basement Bath



OPT Wet Bar - Basement



OPT Elevator - Basement



OPT Elevator - First Floor



OPT Fireplace



OPT Linear Fireplace



OPT Elevator - Second Floor

Want to Know More
About This Home?

CONTACT OUR COMMUNITY SALES MANAGER
Call Us @ 470.514.6999