



PRICED AT
\$649,685

 2233 Sq Ft

 3 Beds

 2.5 Baths

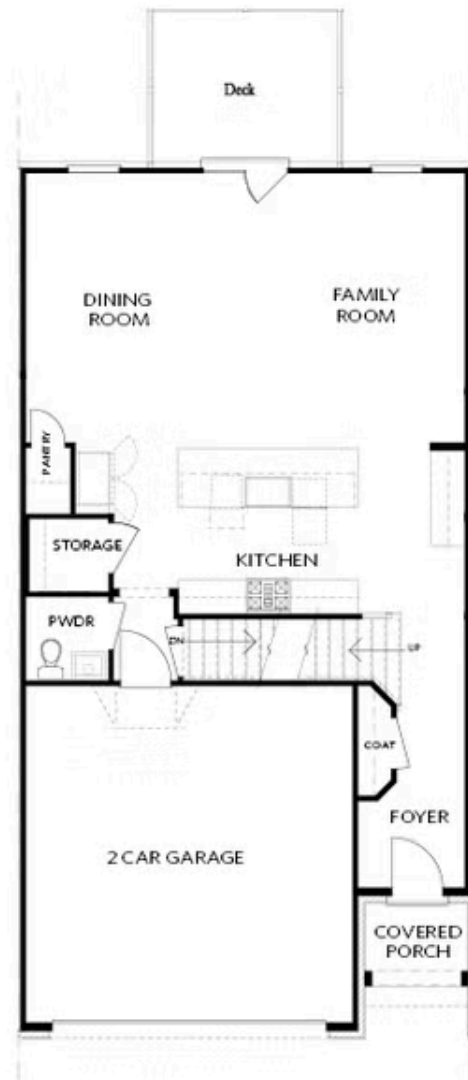
 2 Car Garage

 2.0 Story

Elevate your life in 2023! New Year New Price plus \$20k any way you want on all contracts written before 2/28/2023 and close 3/31/2023! Best floorplan in town. You will not find another home like this one! Perfect 2 story townhome with fenced backyard that is maintained by the HOA. What more could you ask for? If you are tired of stairs, this home has you covered. We have installed the elevator shaft, (currently a storage closet) ready for you whenever you decide to add an elevator. Abundant natural light gleams throughout the entire home. Wide-open and airy floor plan. Hardwood floor throughout main level. Loaded with options, I mean loaded. The owner's suite is massive and the closet is so big it could be another bedroom. 2 guest bedrooms upstairs are large and one of the bedrooms has a walk-in closet. The guest bedrooms will share a hall bath. All of this within one mile to the Forum and less than a mile to Jones Bridge Park. The city had recently widened the sidewalk from ST141 down E Jones Bridge Road making it easier to bike, walk, run or stroll. From the moment you enter Waterside, you will fall ...

**Want to Know More
About This Home?**

CONTACT OUR COMMUNITY SALES MANAGER
Call Us @ 470.514.6999



FIRST FLOOR

Elevation C, I, K

Want to Know More
About This Home?

CONTACT OUR COMMUNITY SALES MANAGER
Call Us @ 470.514.6999

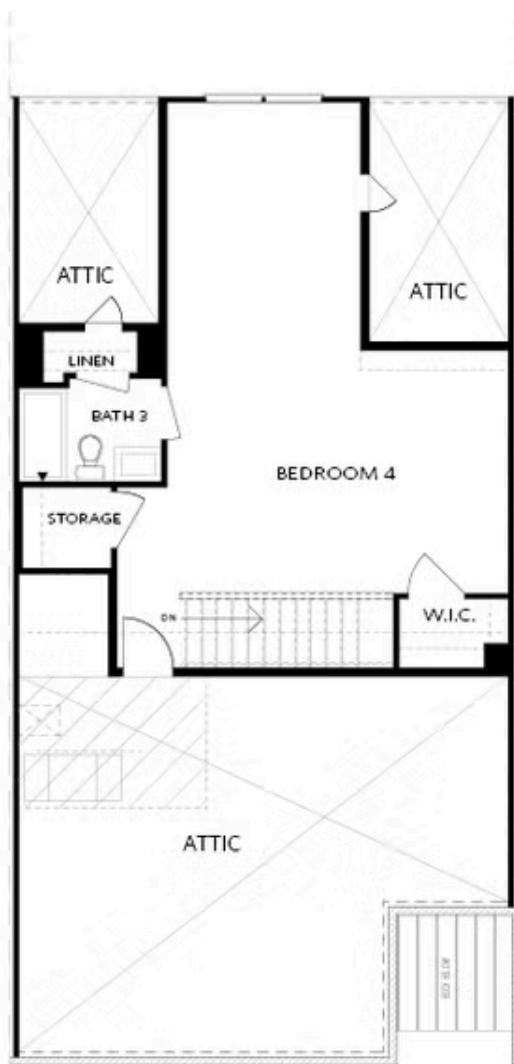


SECOND FLOOR

Elevation C, I, K

Want to Know More
About This Home?

CONTACT OUR COMMUNITY SALES MANAGER
Call Us @ 470.514.6999

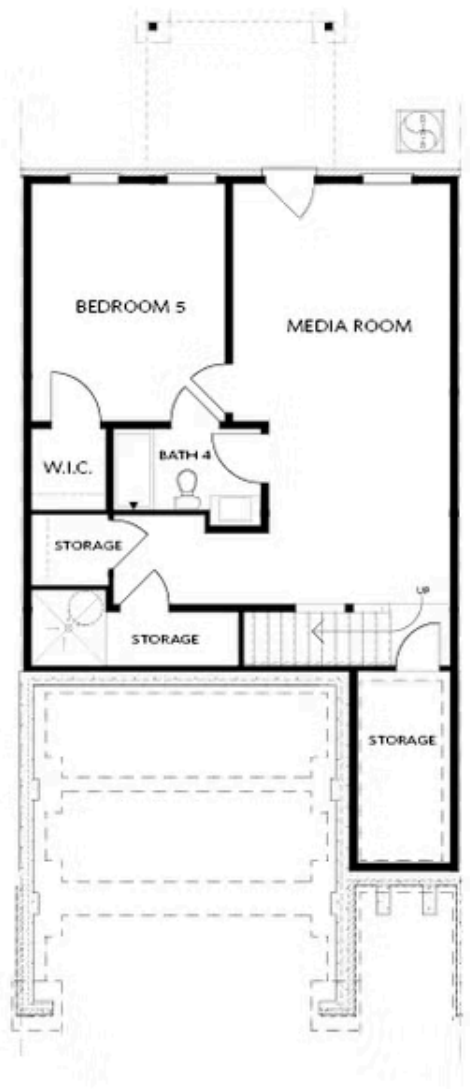


THIRD FLOOR

Elevation C, I, K

Want to Know More
About This Home?

CONTACT OUR COMMUNITY SALES MANAGER
Call Us @ 470.514.6999

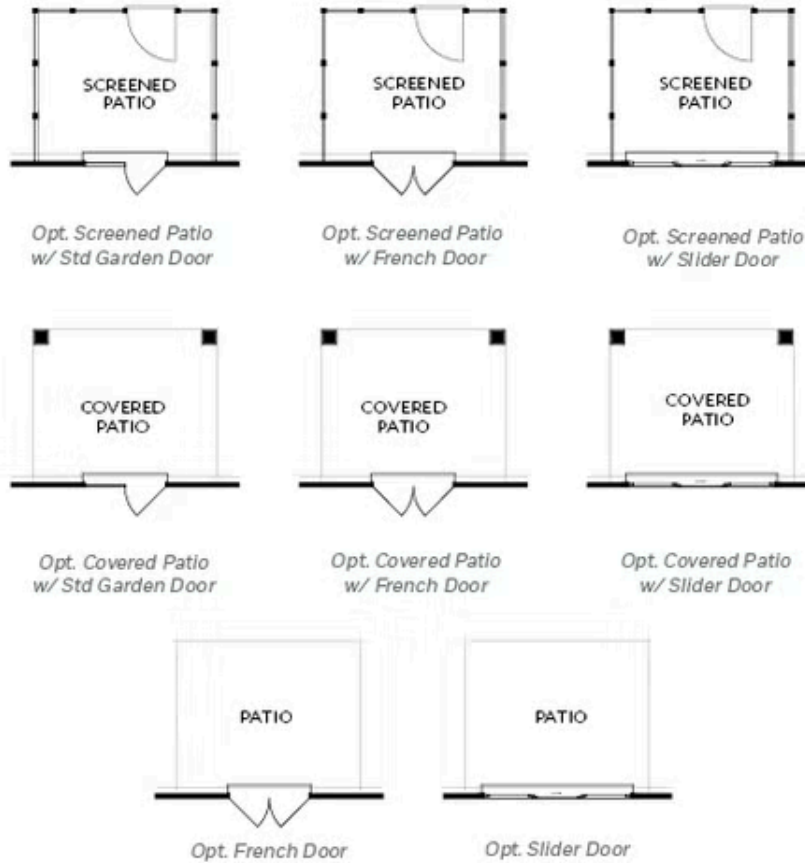


BASEMENT

Elevation C, I, K

Want to Know More
About This Home?

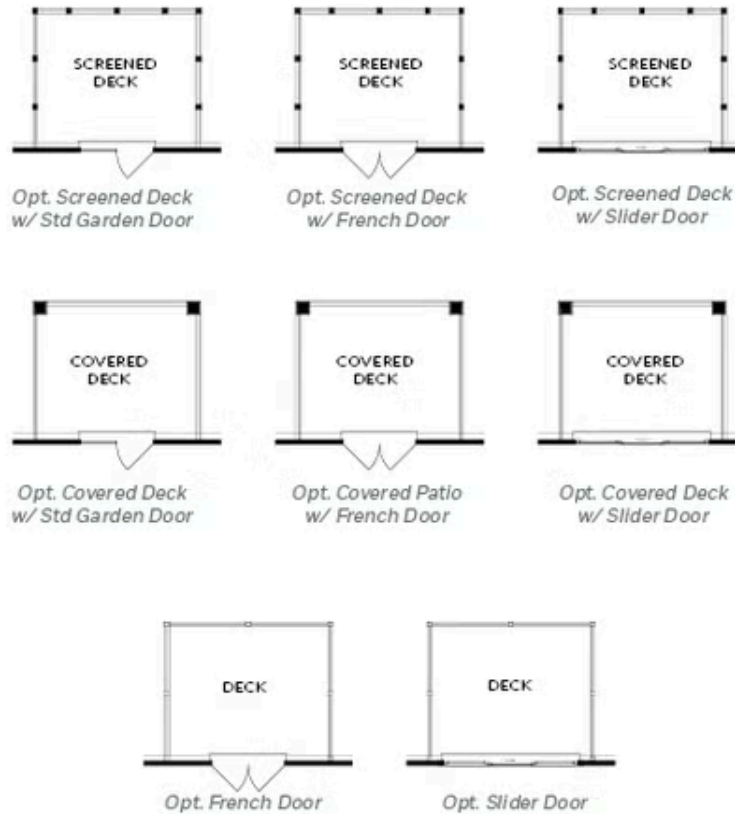
CONTACT OUR COMMUNITY SALES MANAGER
Call Us @ 470.514.6999



FIRST FLOOR
PATIO OPTIONS
ON A SLAB

Want to Know More
About This Home?

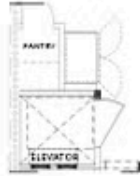
CONTACT OUR COMMUNITY SALES MANAGER
Call Us @ 470.514.6999



FIRST FLOOR
DECK OPTIONS
ON A BASEMENT

Want to Know More
About This Home?

CONTACT OUR COMMUNITY SALES MANAGER
Call Us @ 470.514.6999



Opt. Elevator
First Floor



Opt. Fireplace



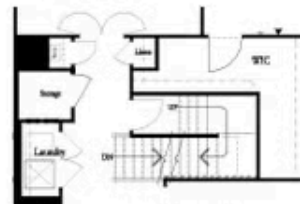
Opt. Linear Fireplace



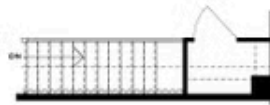
Owner's Suite & Bath
*No Trey or Vaulted Ceilings w/ 3rd Floor



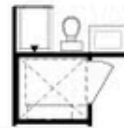
Opt. Elevator
Second Floor



2nd Floor Stairs to 3rd Floor



Opt. Open Rail on 3rd Floor



Opt. Elevator
Third Floor

OPTIONS
ON A SLAB
WITH 3RD FLOOR

Want to Know More
About This Home?

CONTACT OUR COMMUNITY SALES MANAGER
Call Us @ 470.514.6999



Opt. Shower



Opt. Wet Bar



*Opt. Elevator
Basement*



*Opt. Elevator
First Floor*



Opt. Fireplace



Opt. Linear Fireplace



*Opt. Elevator
Second Floor*

OPTIONS ON A BASEMENT

Want to Know More
About This Home?

CONTACT OUR COMMUNITY SALES MANAGER
Call Us @ 470.514.6999