



PRICED AT
\$662,155

 2233 Sq Ft

 3 Beds

 2.5 Baths

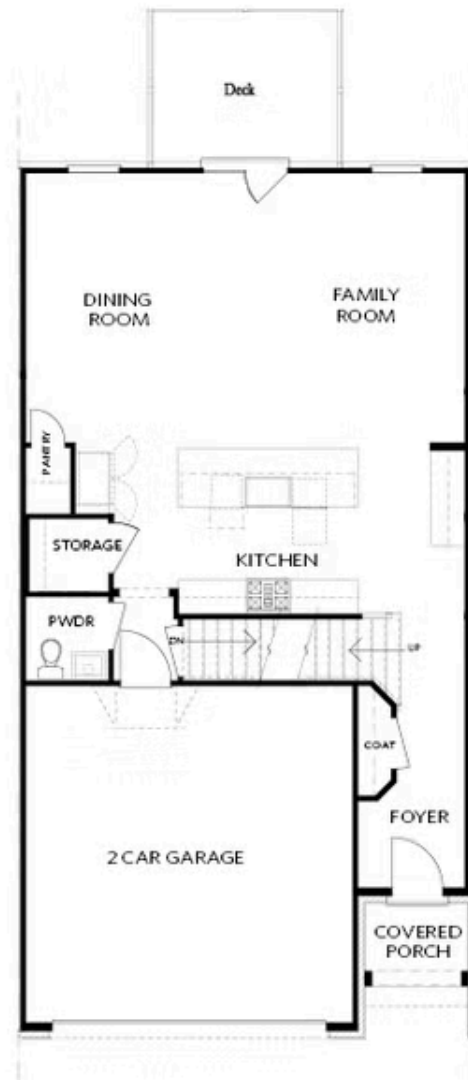
 2 Car Garage

 2.0 Story

Elevate your life in 2023! New Year New Price \$20k any way you want on all contracts written before 2/28/2023 and close 3/31/2023! This end unit is giving you 6 extra windows to allow as much natural light as possible. From the front door, you are greeted by a nice foyer. Pass through the foyer and your whole home is bright, airy, and open. You'll first notice your kitchen island that is over 10' long! You can do all the trendy butter boards and charcuterie boards and still have space! The family and dining room are right in front of the kitchen, don't pause your TV to get a snack, watch it all the way to the kitchen! All bedrooms are upstairs. If stairs are not your thing, we have installed the elevator shaft so add the elevator whenever you like. The owner's suite is breathtaking, you would expect the size to be in a huge single-family home. The bedroom, closet, and bathroom are massive. Hardwood floor throughout the main level and owner's bedroom and upstairs hall. Home also has a fenced backyard lawn that is maintained by the HOA! Waterside is gated with a guard house that will be ...

**Want to Know More
About This Home?**

CONTACT OUR COMMUNITY SALES MANAGER
Call Us @ 470.514.6999

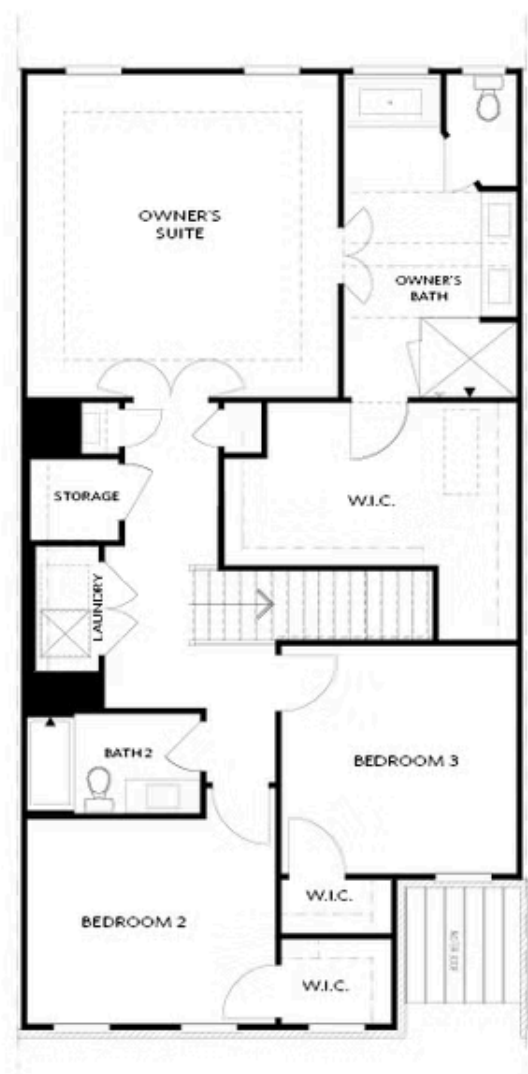


FIRST FLOOR

Elevation C, I, K

Want to Know More
About This Home?

CONTACT OUR COMMUNITY SALES MANAGER
Call Us @ 470.514.6999

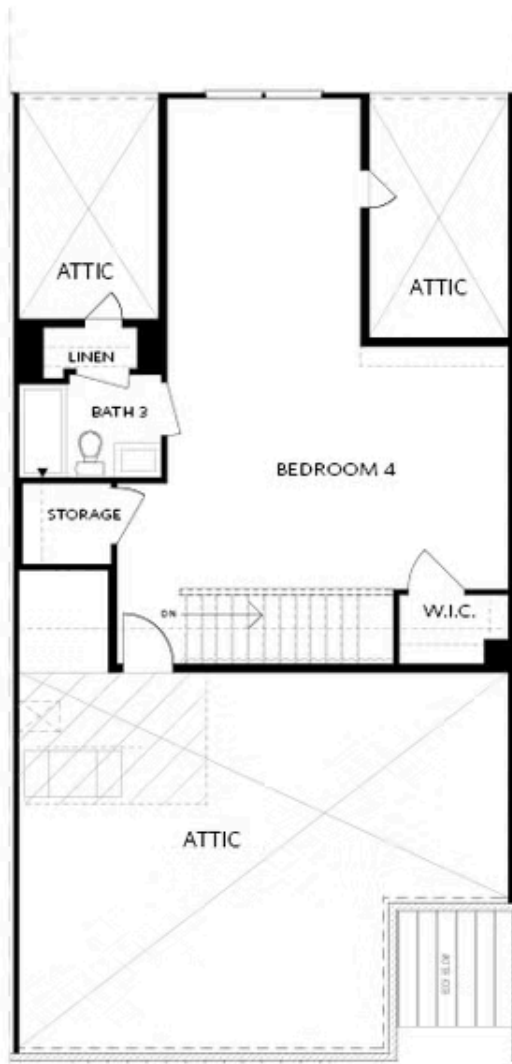


SECOND FLOOR

Elevation C, I, K

Want to Know More
About This Home?

CONTACT OUR COMMUNITY SALES MANAGER
Call Us @ 470.514.6999

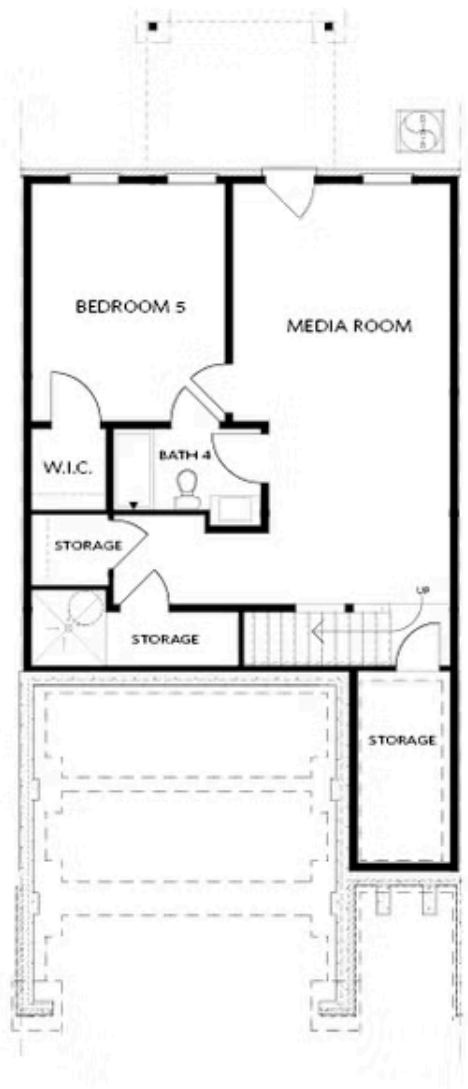


THIRD FLOOR

Elevation C, I, K

Want to Know More
About This Home?

CONTACT OUR COMMUNITY SALES MANAGER
Call Us @ 470.514.6999

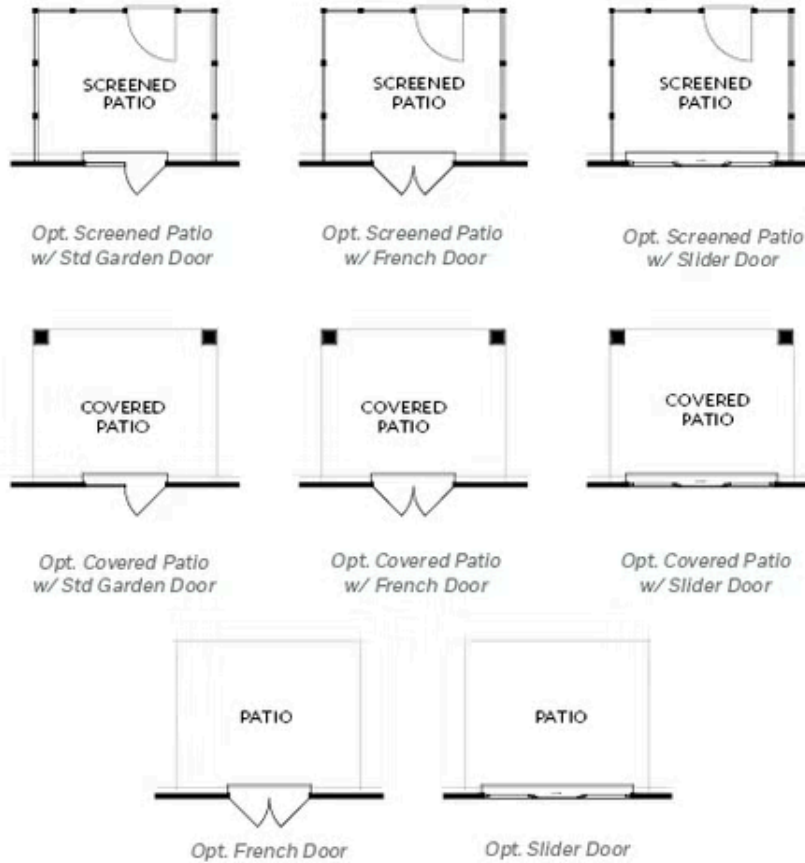


BASEMENT

Elevation C, I, K

Want to Know More
About This Home?

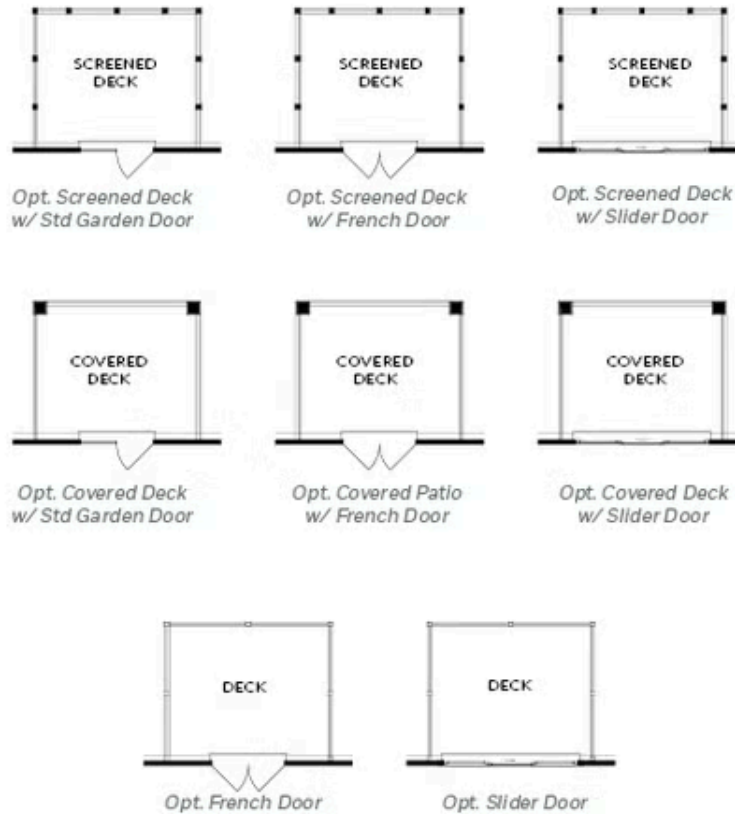
CONTACT OUR COMMUNITY SALES MANAGER
Call Us @ 470.514.6999



FIRST FLOOR
PATIO OPTIONS
ON A SLAB

Want to Know More
About This Home?

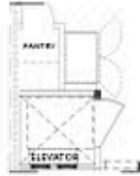
CONTACT OUR COMMUNITY SALES MANAGER
Call Us @ 470.514.6999



FIRST FLOOR
DECK OPTIONS
ON A BASEMENT

Want to Know More
About This Home?

CONTACT OUR COMMUNITY SALES MANAGER
Call Us @ 470.514.6999



Opt. Elevator
First Floor



Opt. Fireplace



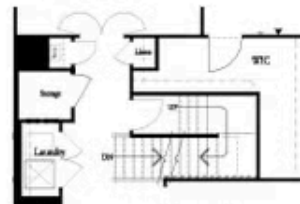
Opt. Linear Fireplace



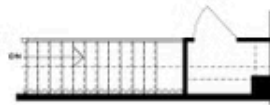
Owner's Suite & Bath
*No Trey or Vaulted Ceilings w/ 3rd Floor



Opt. Elevator
Second Floor



2nd Floor Stairs to 3rd Floor



Opt. Open Rail on 3rd Floor



Opt. Elevator
Third Floor

OPTIONS ON A SLAB WITH 3RD FLOOR

Want to Know More
About This Home?

CONTACT OUR COMMUNITY SALES MANAGER
Call Us @ 470.514.6999



Opt. Shower



Opt. Wet Bar



*Opt. Elevator
Basement*



*Opt. Elevator
First Floor*



Opt. Fireplace



Opt. Linear Fireplace



*Opt. Elevator
Second Floor*

OPTIONS ON A BASEMENT

Want to Know More
About This Home?

CONTACT OUR COMMUNITY SALES MANAGER
Call Us @ 470.514.6999