



PRICED AT
\$668,420

 **2233 Sq Ft**

 **3 Beds**

 **2.5 Baths**

 **2 Car Garage**

 **2.0 Story**

\$10,000.00 in Closing Cost with Preferred Lender plus 3% CO-OP on contracts written before 9/5/2022 and closing on or before 10/31/2022. End Unit 2 story Townhome Under Construction in Peachtree Corners. You will not find another home like this one! Abundant natural light gleams throughout the entire home. Wide-open, airy floor plan with a small fenced back yard. 10'ceilings on the main level. Hardwood floor throughout main level. This home even has an elevator option! Located minutes from The Forum. New Gated Master Planned Community is backing up to the Chattahoochee River, surrounded by beautiful lush trees and the opportunity to take a walk down to the River or enjoy state of the art amenities w/Swim, fitness, parks, clubhouse, etc. Community w/single family & townhomes Visiting our office is by appointment only. For driving directions, you can use 4411 E. Jones Bridge Road, Peachtree Corners, GA 30092

**Want to Know More
About This Home?**

CONTACT OUR COMMUNITY SALES MANAGER
Call Us @ 470.514.6999

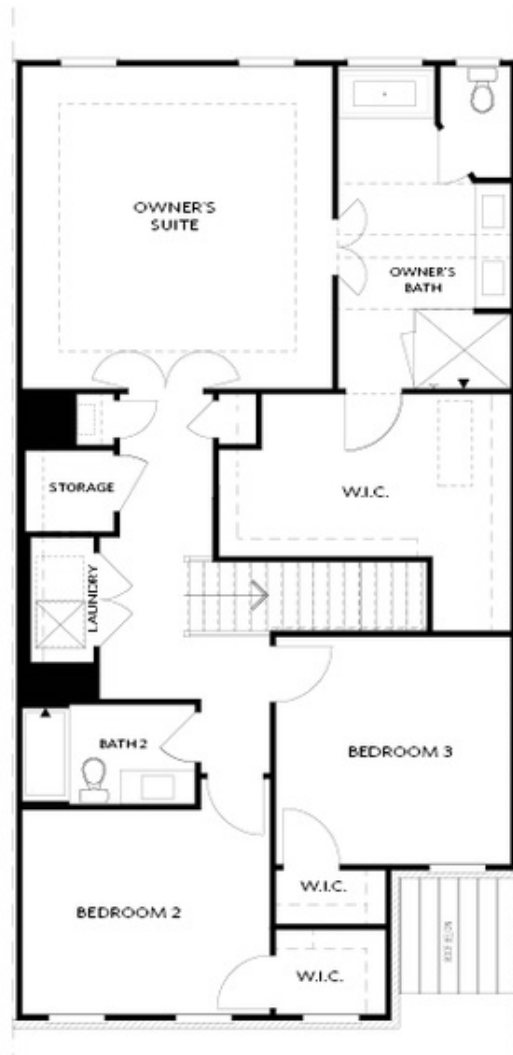


FIRST FLOOR

Elevation C, I, K

Want to Know More
About This Home?

CONTACT OUR COMMUNITY SALES MANAGER
Call Us @ 470.514.6999

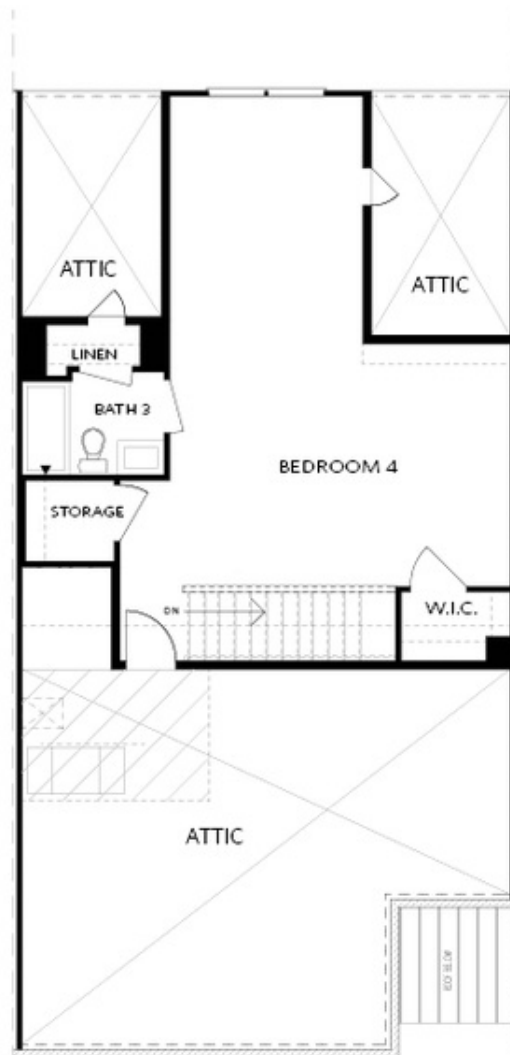


SECOND FLOOR

Elevation C, I, K

Want to Know More
About This Home?

CONTACT OUR COMMUNITY SALES MANAGER
Call Us @ 470.514.6999

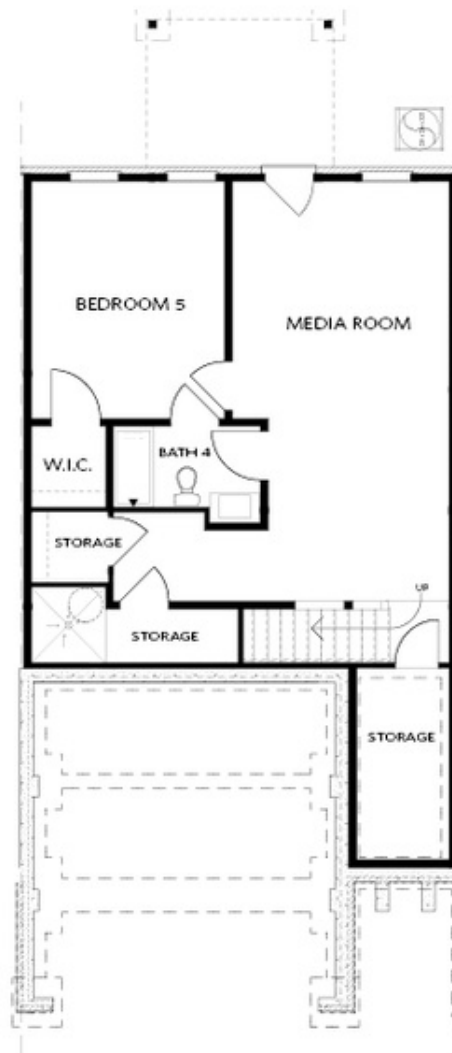


THIRD FLOOR

Elevation C, I, K

Want to Know More
About This Home?

CONTACT OUR COMMUNITY SALES MANAGER
Call Us @ 470.514.6999

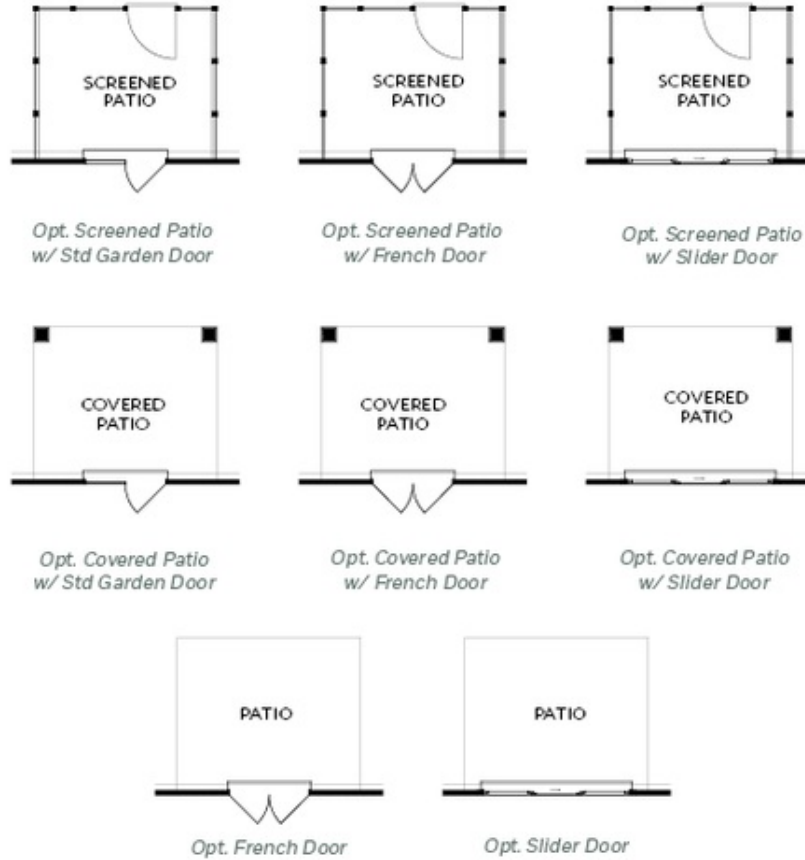


BASEMENT

Elevation C, I, K

Want to Know More
About This Home?

CONTACT OUR COMMUNITY SALES MANAGER
Call Us @ 470.514.6999



FIRST FLOOR
 PATIO OPTIONS
 ON A SLAB

Want to Know More
 About This Home?

CONTACT OUR COMMUNITY SALES MANAGER
 Call Us @ 470.514.6999



*Opt. Screened Deck
w/ Std Garden Door*



*Opt. Screened Deck
w/ French Door*



*Opt. Screened Deck
w/ Slider Door*



*Opt. Covered Deck
w/ Std Garden Door*



*Opt. Covered Patio
w/ French Door*



*Opt. Covered Deck
w/ Slider Door*



Opt. French Door

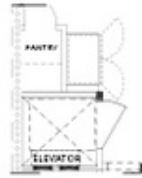


Opt. Slider Door

FIRST FLOOR
DECK OPTIONS
ON A BASEMENT

Want to Know More
About This Home?

CONTACT OUR COMMUNITY SALES MANAGER
Call Us @ 470.514.6999



*Opt. Elevator
 First Floor*



Opt. Fireplace



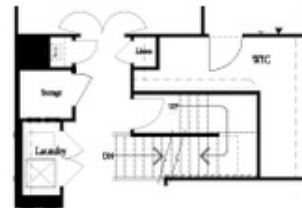
Opt. Linear Fireplace



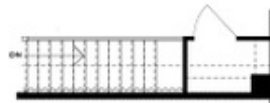
Owner's Suite & Bath
**No Trey or Vaulted Ceilings w/ 3rd Floor*



*Opt. Elevator
 Second Floor*



2nd Floor Stairs to 3rd Floor



Opt. Open Rail on 3rd Floor



*Opt. Elevator
 Third Floor*

OPTIONS
 ON A SLAB
 WITH 3RD FLOOR

**Want to Know More
 About This Home?**

CONTACT OUR COMMUNITY SALES MANAGER
Call Us @ 470.514.6999



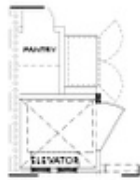
Opt. Shower



Opt. Wet Bar



*Opt. Elevator
 Basement*



*Opt. Elevator
 First Floor*



Opt. Fireplace



Opt. Linear Fireplace



*Opt. Elevator
 Second Floor*

**OPTIONS
 ON A BASEMENT**

**Want to Know More
 About This Home?**

CONTACT OUR COMMUNITY SALES MANAGER
Call Us @ 470.514.6999