



PRICED AT
\$727,600

 2233 Sq Ft

 3 Beds

 2.5 Baths

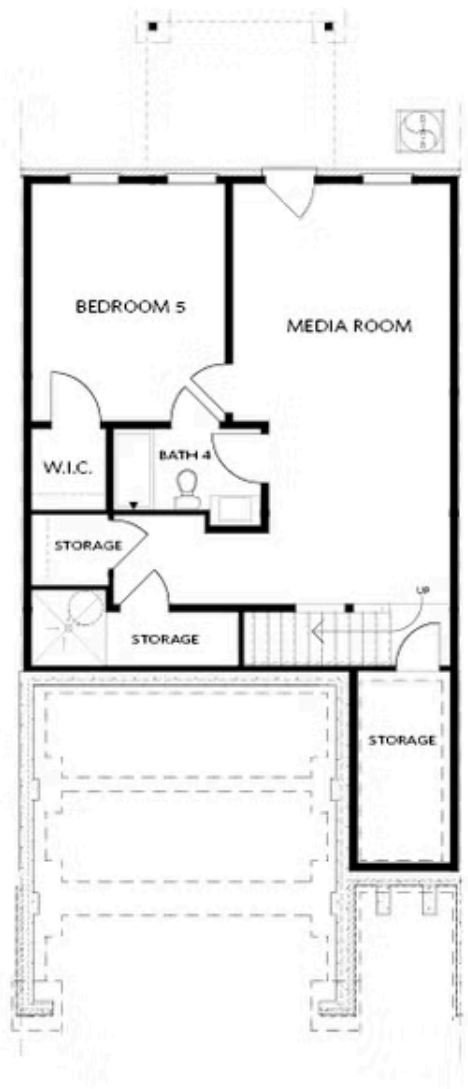
 2 Car Garage

 2.0 Story

Your Home, Your Way with \$5,000. Customize your home buying journey - use it toward low rates, upgrades, appliances, closing costs & more. Ends August 31, 2025 Two-story Ellington is back in Phase 3!! This stunning end-unit townhome blends luxurious design with functional living in an open-concept layout that seamlessly connects the kitchen, family room, and dining area—perfect for entertaining and everyday living. At the heart of the home is an impressive 11-foot island, ideal for gathering, meal prep, or casual dining. Oversized glass sliders flood the space with natural light and lead to a covered patio that overlooks lush greenspace, offering a serene outdoor retreat. As an end unit, the home features additional windows that invite even more natural light, enhancing the bright and airy feel throughout. Upstairs, the oversized owner's suite serves as a private sanctuary with a spa-inspired bath featuring a deep soaking tub, double vanities, a separate glass-enclosed shower, and a massive walk-in closet designed for ultimate storage and organization. Two generously sized secondary bedrooms share a stylish hall bath, providing ample space for family, guests, or a home office. Designed with future flexibility in mind, the home includes a built-in elevator shaft—ready for elevator installation ...

**Want to Know More
About This Home?**

CONTACT OUR COMMUNITY SALES MANAGER
Call Us @ 470.514.6999

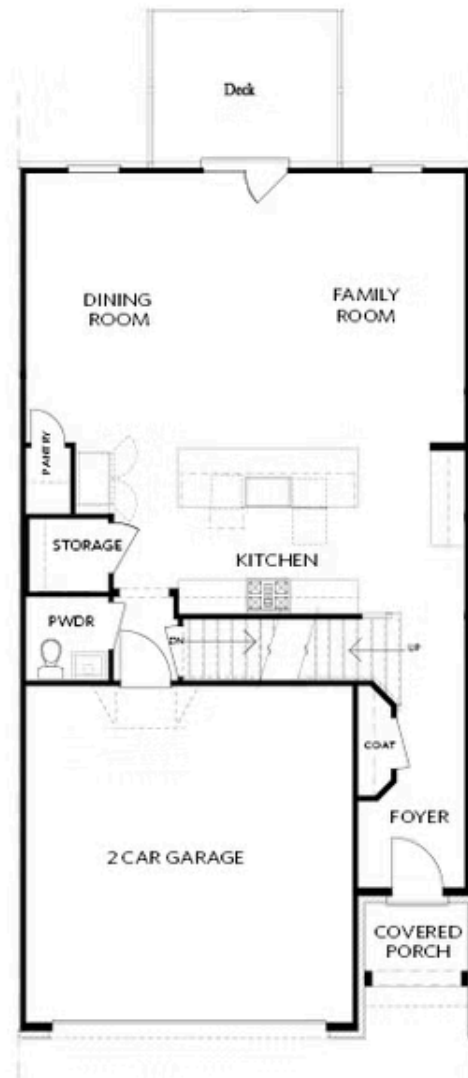


BASEMENT

Elevation C, I, K

Want to Know More
About This Home?

CONTACT OUR COMMUNITY SALES MANAGER
Call Us @ 470.514.6999

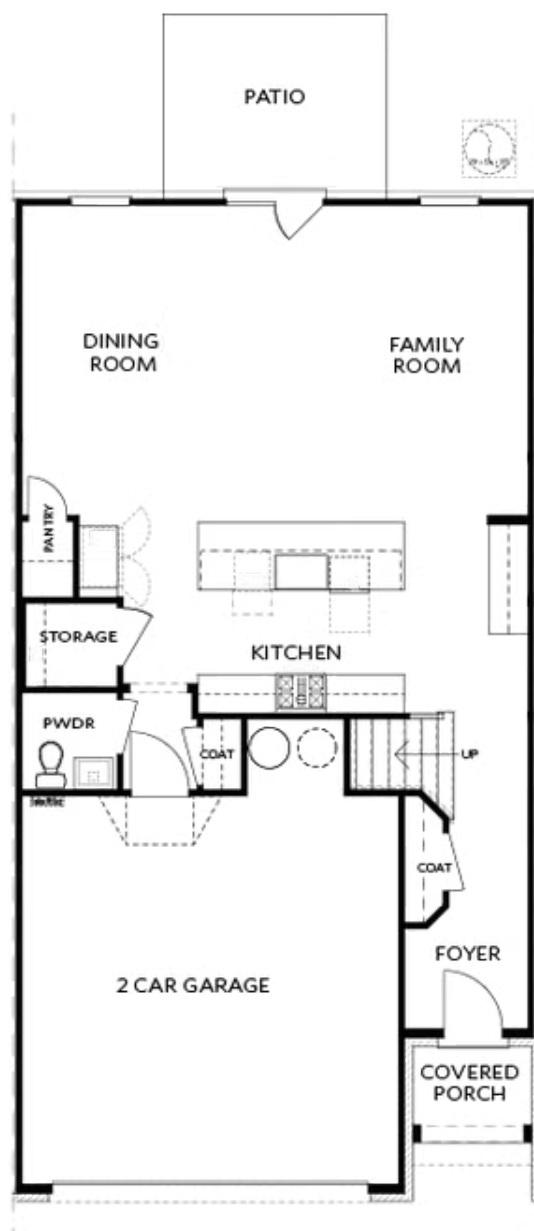


FIRST FLOOR

Elevation C, I, K

Want to Know More
About This Home?

CONTACT OUR COMMUNITY SALES MANAGER
Call Us @ 470.514.6999



Elevations C, I, K

Want to Know More
About This Home?

CONTACT OUR COMMUNITY SALES MANAGER
Call Us @ 470.514.6999

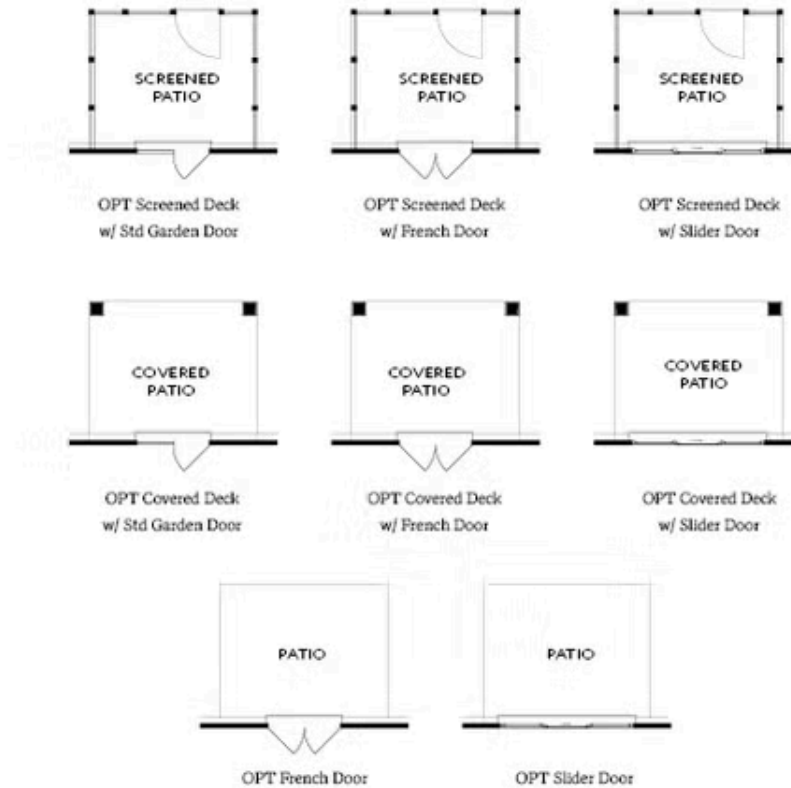


SECOND FLOOR

Elevation C, I, K

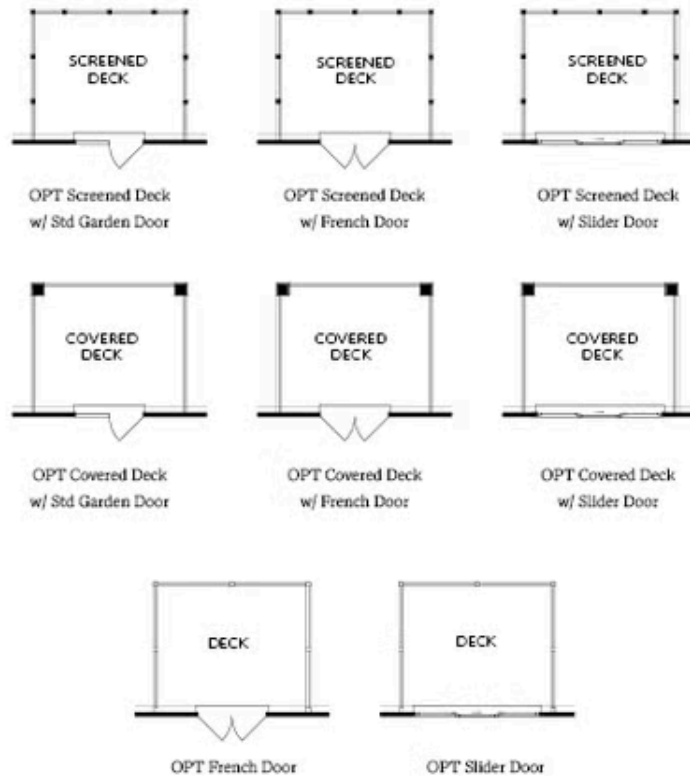
Want to Know More
About This Home?

CONTACT OUR COMMUNITY SALES MANAGER
Call Us @ 470.514.6999



Want to Know More
About This Home?

CONTACT OUR COMMUNITY SALES MANAGER
Call Us @ 470.514.6999



Want to Know More
About This Home?

CONTACT OUR COMMUNITY SALES MANAGER
Call Us @ 470.514.6999



OPT Elevator - Second Floor



OPT Elevator - First Floor



OPT Fireplace



OPT Linear Fireplace

Want to Know More
About This Home?

CONTACT OUR COMMUNITY SALES MANAGER
Call Us @ 470.514.6999



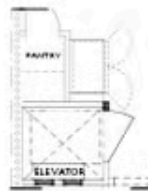
OPT Shower - Basement Bath



OPT Wet Bar - Basement



OPT Elevator - Basement



OPT Elevator - First Floor



OPT Fireplace



OPT Linear Fireplace



OPT Elevator - Second Floor

Want to Know More
About This Home?

CONTACT OUR COMMUNITY SALES MANAGER
Call Us @ 470.514.6999