




PRICED AT
\$765,295

 2233 Sq Ft

 3 Beds

 2.5 Baths

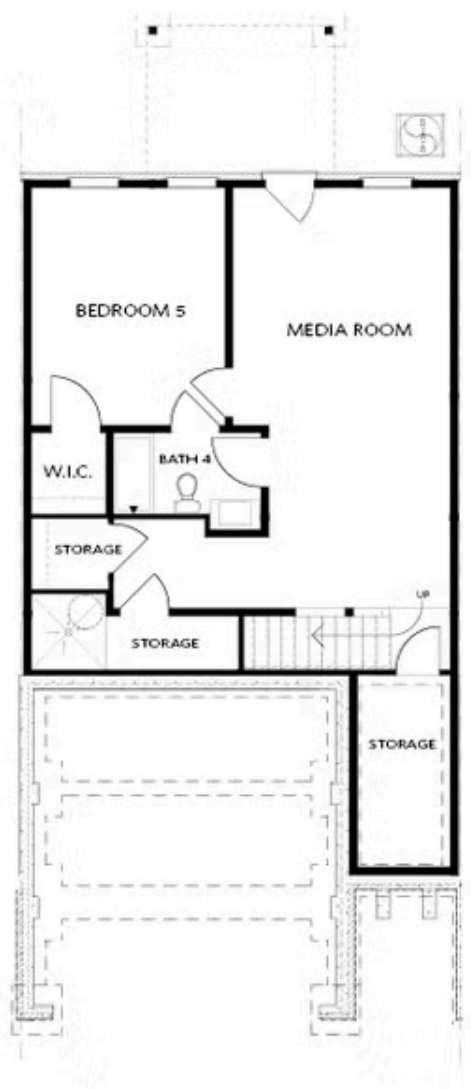
 2 Car Garage

 2.0 Story

Elevate your savings! TOWNHOME WITH A FENCED YARD! NEW 2-Story Townhomes in Phase 3 of Master-Planned Waterside by The Providence Group. Two car front load garage and driveway. Elevator capability on wide footprint, these popular townhomes live like a detached home. Move-ins late Spring 2026. 2-Level Townhome with Great plans at great prices!! Walking into the main floor, foyer greets you and leads to the open concept living/kitchen/dining. Gas Cooking, hood vent over the cooktop. Option for Double Oven kitchen layout when buyer selects cabinetry. 12 FT Slider door leads out to fenced in backyard overlooking the edge of the property. Covered porch, yard maintained by the HOA. Upstairs lives spacious Owner's Suite with tray ceiling. Owner's Bathroom layout gives spa feels, with a soaking tub, vaulted ceiling, private water closet, double vanity and frameless shower. Walk from the bathroom into one of the largest closets in new constructions! Roommate floor plan with two additional bedrooms on the other side of the top floor, sharing a bathroom. You will have easy access to our full-sized pool, 2-story clubhouse with full gym, and Amenity Area. New Gated Master Planned Community backing up to the Chattahoochee River, 1 mile from The Forum ...

**Want to Know More
About This Home?**

CONTACT OUR COMMUNITY SALES MANAGER
Call Us @ 470.514.6999

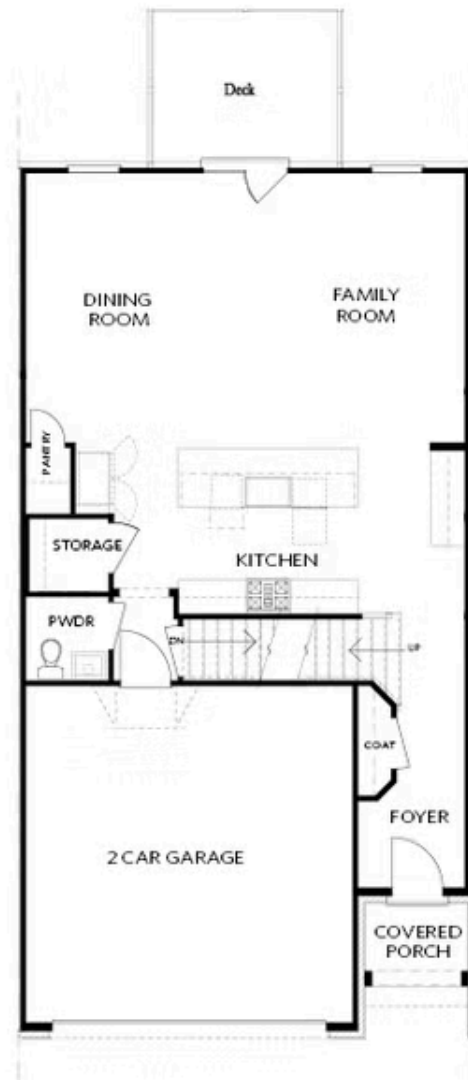


BASEMENT

Elevation C, I, K

Want to Know More
About This Home?

CONTACT OUR COMMUNITY SALES MANAGER
Call Us @ 470.514.6999

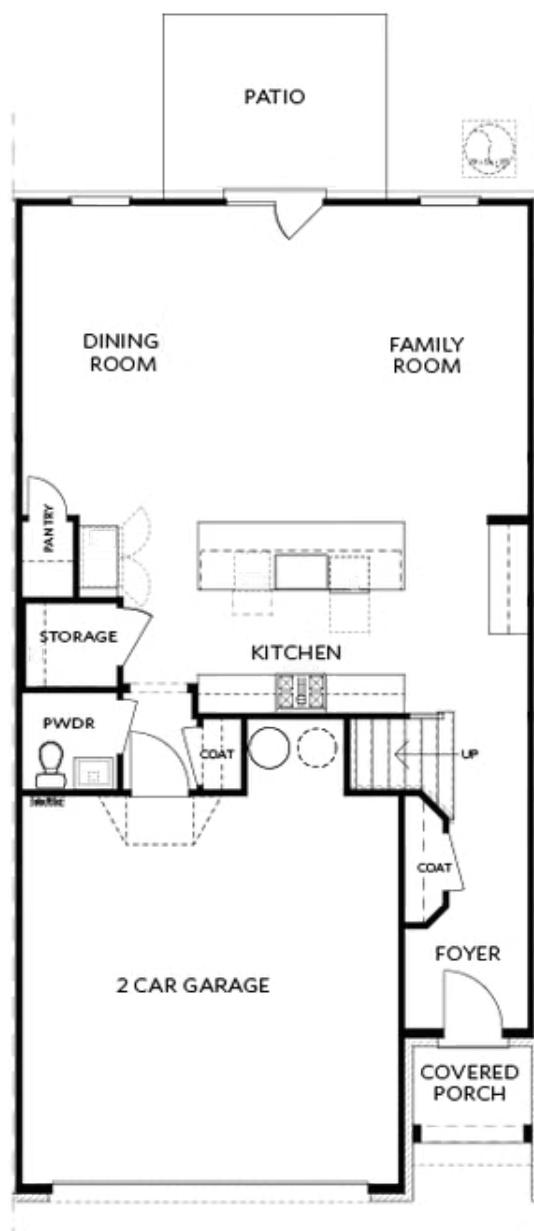


FIRST FLOOR

Elevation C, I, K

Want to Know More
About This Home?

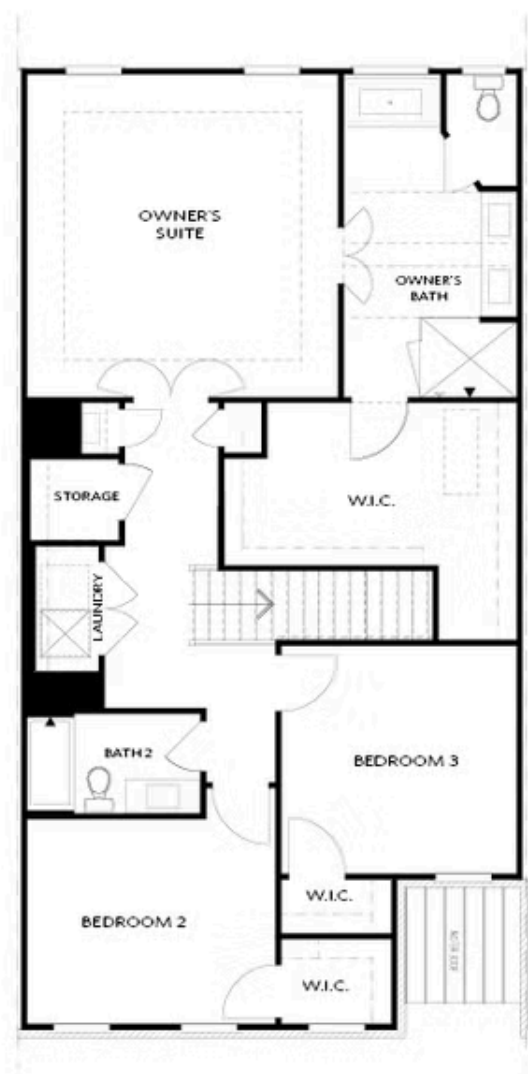
CONTACT OUR COMMUNITY SALES MANAGER
Call Us @ 470.514.6999



Elevations C, I, K

Want to Know More
About This Home?

CONTACT OUR COMMUNITY SALES MANAGER
Call Us @ 470.514.6999

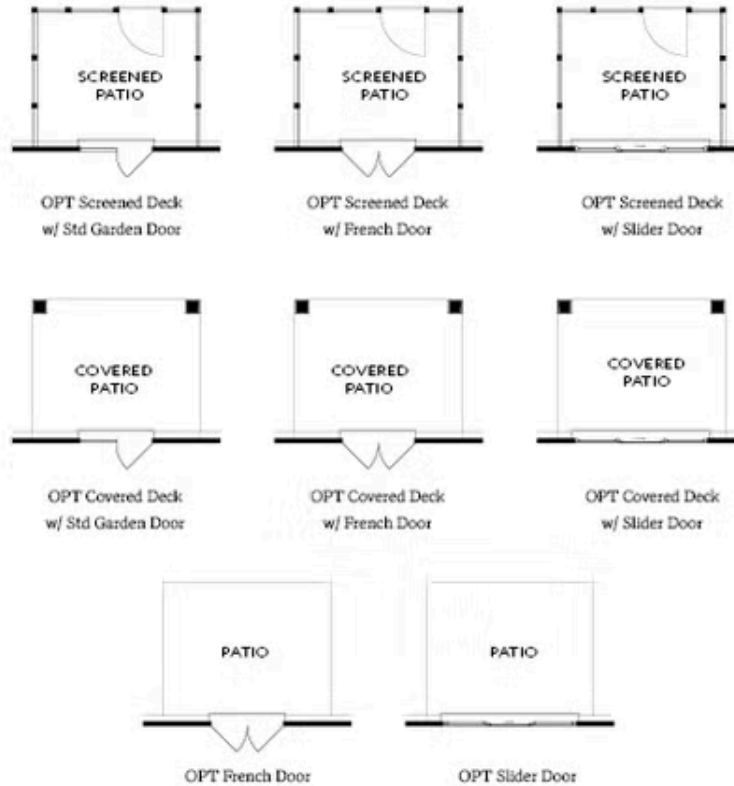


SECOND FLOOR

Elevation C, I, K

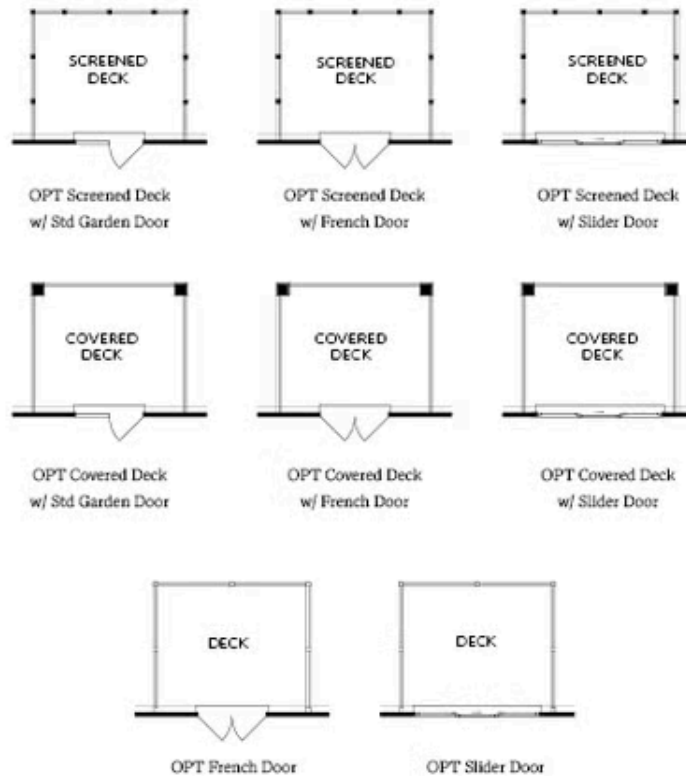
Want to Know More
About This Home?

CONTACT OUR COMMUNITY SALES MANAGER
Call Us @ 470.514.6999



Want to Know More
About This Home?

CONTACT OUR COMMUNITY SALES MANAGER
Call Us @ 470.514.6999

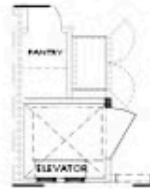


Want to Know More
About This Home?

CONTACT OUR COMMUNITY SALES MANAGER
Call Us @ 470.514.6999



OPT Elevator - Second Floor



OPT Elevator - First Floor



OPT Fireplace



OPT Linear Fireplace

Want to Know More
About This Home?

CONTACT OUR COMMUNITY SALES MANAGER
Call Us @ 470.514.6999



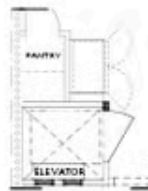
OPT Shower - Basement Bath



OPT Wet Bar - Basement



OPT Elevator - Basement



OPT Elevator - First Floor



OPT Fireplace



OPT Linear Fireplace



OPT Elevator - Second Floor

Want to Know More
About This Home?

CONTACT OUR COMMUNITY SALES MANAGER
Call Us @ 470.514.6999