



PRICED FROM  
**\$655,600**

 2,163 - 2,395 Sq Ft

 3 Beds

 3.5 Baths

 2 Car Garage

 3.0 Story

- Gourmet Kitchen with Island
- Owner's Suite and Private Bath with Dual Vanities and Large Walk-In Shower
- Bedroom with Private Bath on Terrace Level
- Two Car Garage

[Read More Online](#)

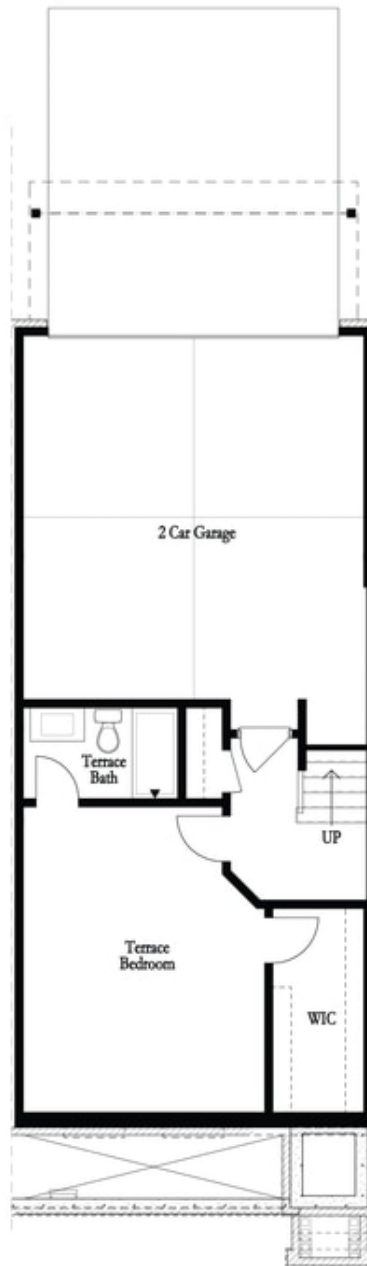
## Available Elevations



Elevation - Benton II and Jacobsen II

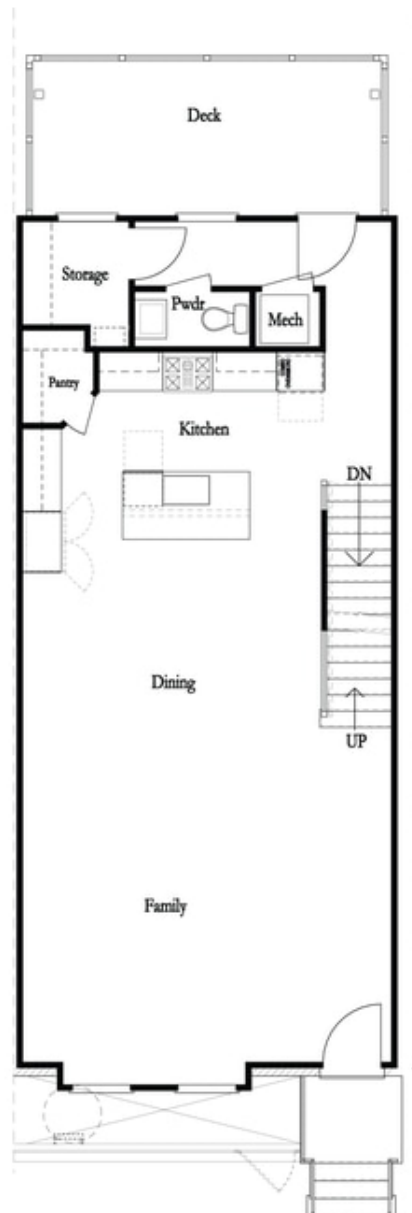
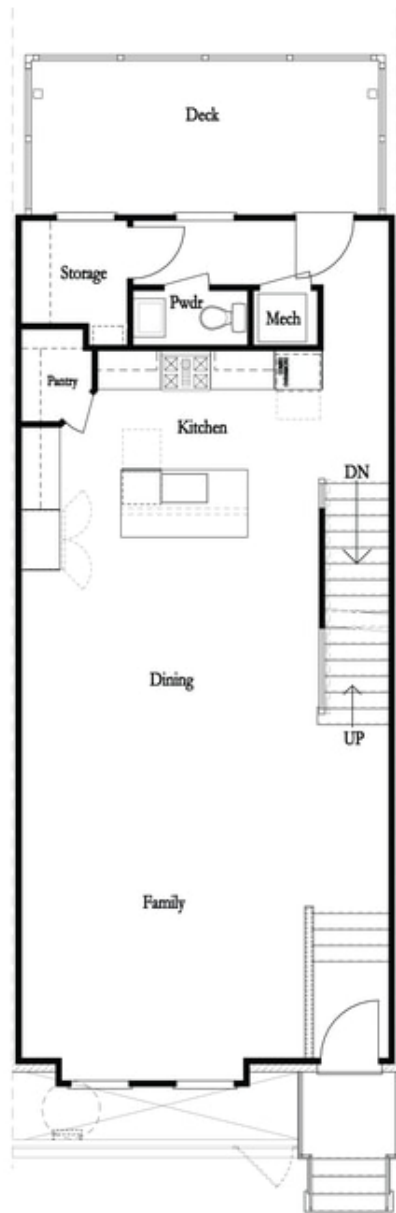


Benton II - Entry Way



Want to Know More  
About This Home?

CONTACT OUR COMMUNITY SALES MANAGER  
Call Us @ 470.514.6999



**Want to Know More  
About This Home?**

CONTACT OUR COMMUNITY SALES MANAGER  
Call Us @ 470.514.6999



**Want to Know More  
About This Home?**

CONTACT OUR COMMUNITY SALES MANAGER  
Call Us @ 470.514.6999

\* Not All Options are Available in All Communities



Left End  
Opt. Sprinkler Room

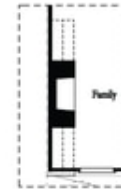


Right End  
Opt. Sprinkler Room

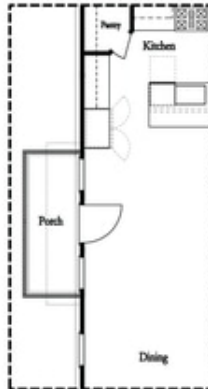
Terrace Level Options



Laundry with Optional Bedroom 3 Only



Opt. 36" Fireplace



Optional Side Porch  
\*End Unit Only



Opt. Sunroom



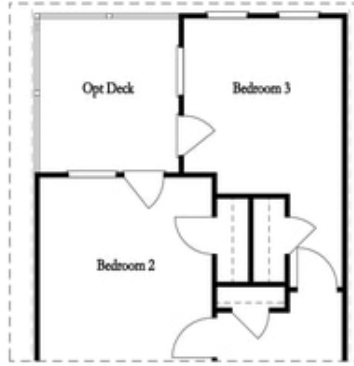
Opt. Linear Fireplace

Main Level Options

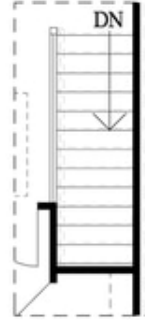
Want to Know More  
About This Home?

CONTACT OUR COMMUNITY SALES MANAGER  
Call Us @ 470.514.6999

Options



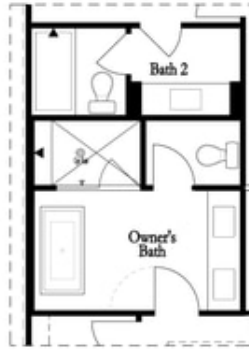
*Opt. Bedroom 3*  
*\*Only available w/ sunroom option*  
*\*Laundry moved to main floor w/ this opt.*



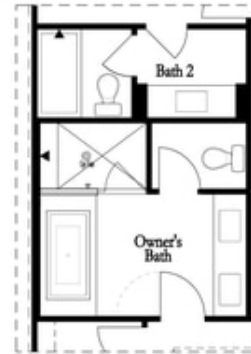
*Opt. Open Rail*



*Opt. Walk-Through  
 Shower*



*Opt. Freestanding  
 Tub/Shower Combo*



*Opt. Decked  
 Tub/Shower Combo*

Third Floor Options

**Want to Know More  
 About This Home?**

CONTACT OUR COMMUNITY SALES MANAGER  
 Call Us @ 470.514.6999