




PRICED FROM
\$968,500

 2,233 - 3,034 Sq Ft

 3 - 4 Beds

 2.5 - 3 Baths

 2 Car Garage

 2.0 - 3.0 Story

- Gourmet Kitchen with a Massive Island Overlooking Dining Room and Family Room
- Spacious Main Level Layout Ideal for Entertaining
- Double Doors Open to the Owner's Suite with a Huge Walk-In Closet
- Owner's Bath Features Vaulted Ceiling, Separate Tub & Shower, Dual Vanity with Private Water Closet
- Two Secondary Bedrooms both Offer Walk-In Closet and Easy Access to a Shared Full Bath
- Laundry Room is Outside the Owner's Suite
- 2-Car, Front Entry Garage

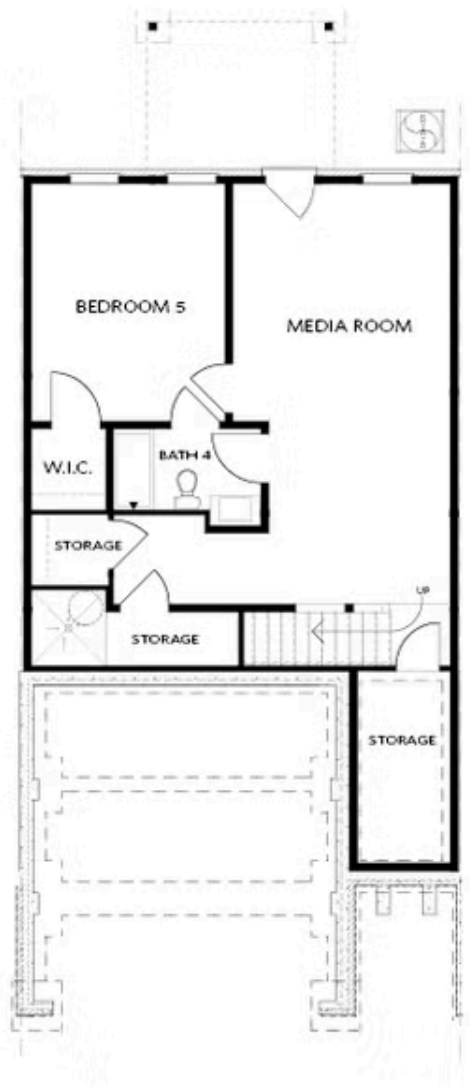
• Optional Room with Media Room, Guest Suite with Full Bathroom, and Ample Storage

[Read More Online](#)

Available Elevations



Elevation

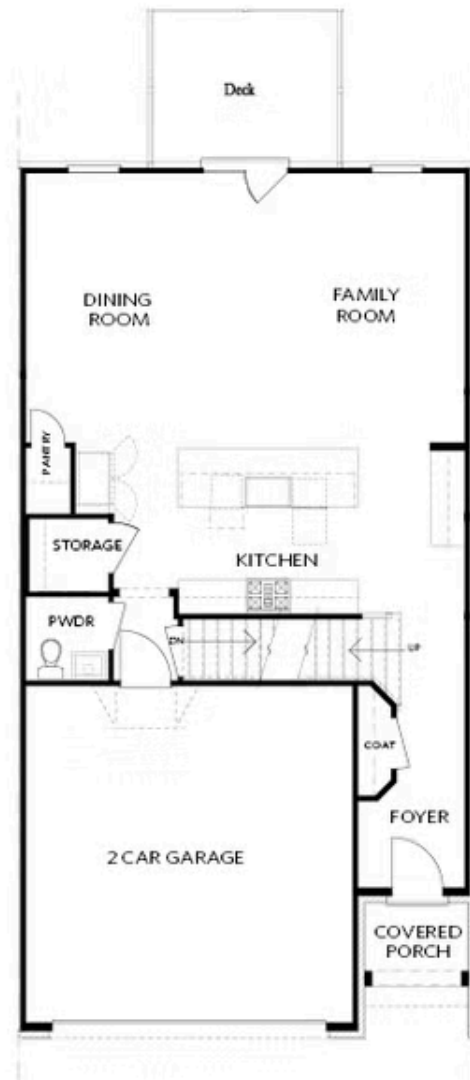


BASEMENT

Elevation C, I, K

Want to Know More
About This Home?

CONTACT OUR COMMUNITY SALES MANAGER
Call Us @ 470.514.6999

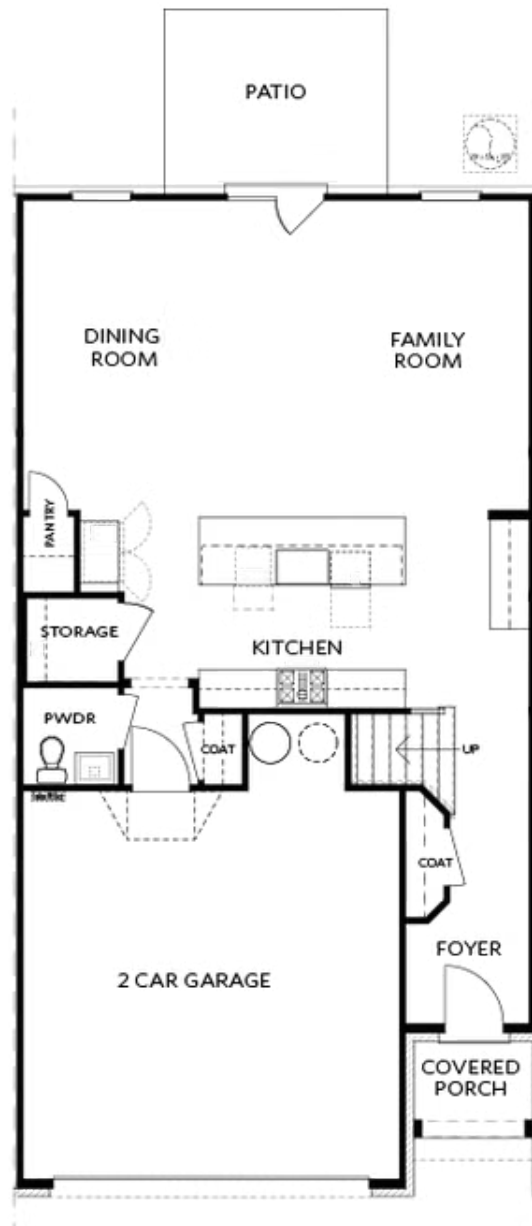


FIRST FLOOR

Elevation C, I, K

Want to Know More
About This Home?

CONTACT OUR COMMUNITY SALES MANAGER
Call Us @ 470.514.6999



Elevations C, I, K

Want to Know More
About This Home?

CONTACT OUR COMMUNITY SALES MANAGER
Call Us @ 470.514.6999

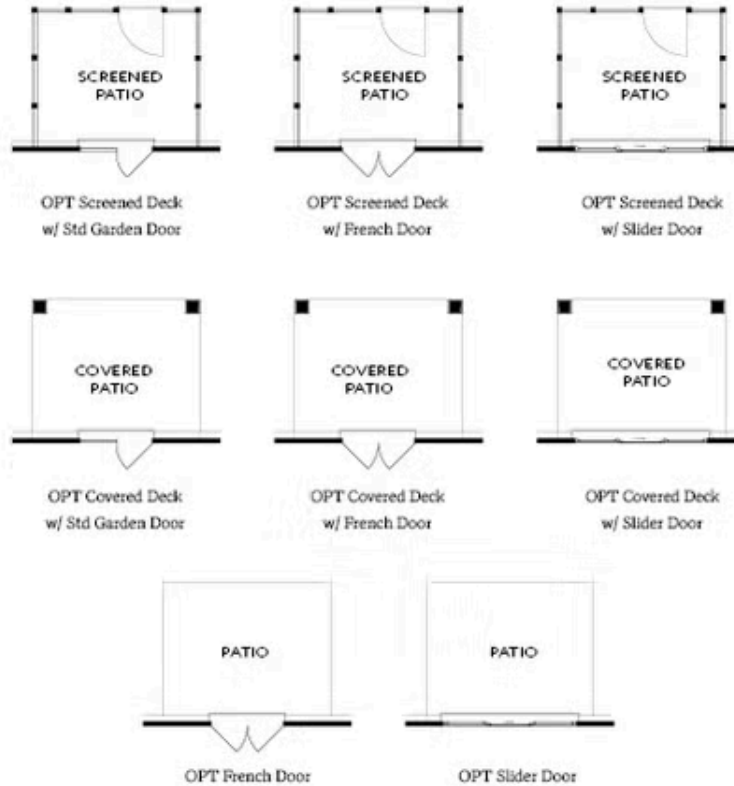


SECOND FLOOR

Elevation C, I, K

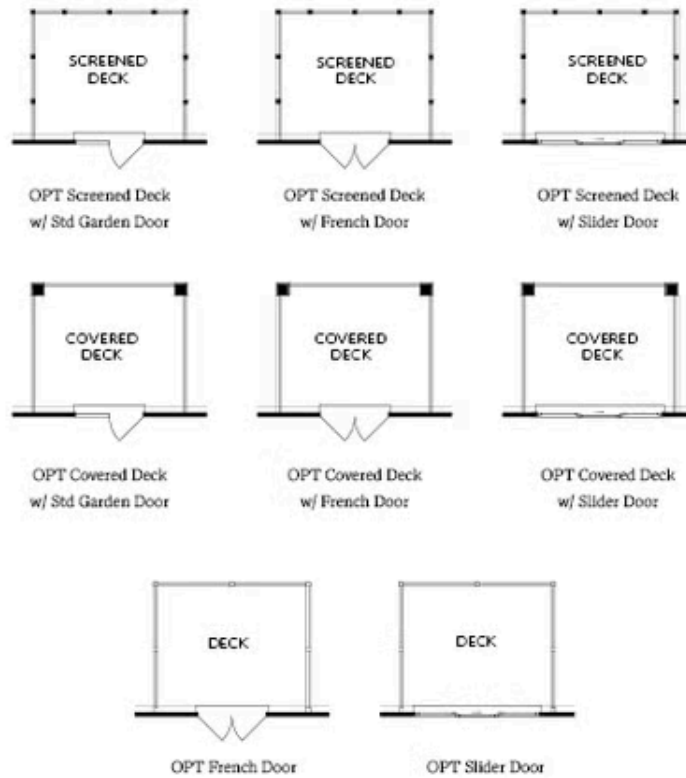
Want to Know More
About This Home?

CONTACT OUR COMMUNITY SALES MANAGER
Call Us @ 470.514.6999



Want to Know More
About This Home?

CONTACT OUR COMMUNITY SALES MANAGER
Call Us @ 470.514.6999

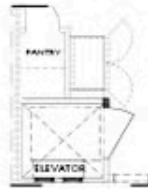


Want to Know More
About This Home?

CONTACT OUR COMMUNITY SALES MANAGER
Call Us @ 470.514.6999



OPT Elevator - Second Floor



OPT Elevator - First Floor



OPT Fireplace



OPT Linear Fireplace

Want to Know More
About This Home?

CONTACT OUR COMMUNITY SALES MANAGER
Call Us @ 470.514.6999



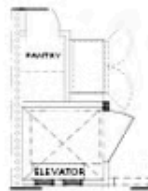
OPT Shower - Basement Bath



OPT Wet Bar - Basement



OPT Elevator - Basement



OPT Elevator - First Floor



OPT Fireplace



OPT Linear Fireplace



OPT Elevator - Second Floor

Want to Know More
About This Home?

CONTACT OUR COMMUNITY SALES MANAGER
Call Us @ 470.514.6999