




PRICED FROM  
**\$625,900**

 2,162 - 2,192 Sq Ft

 3 Beds

 3.5 Baths

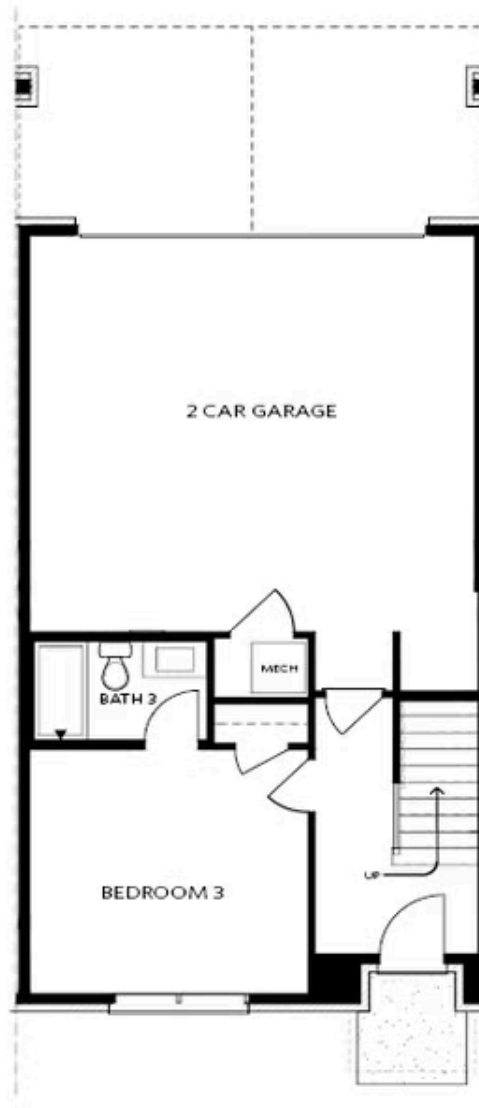
 2 Car Garage

 3.0 Story

- Terrace Entry Home with a small Foyer
  - Bedroom with a Full Bath on the Terrace
  - Open Main Level Concept including a Sunroom and Private Covered Deck off the Family Room
  - Gourmet Kitchen with a Large Island in the Front of the Home
  - Third Floor Features an the Owner's Suite, Laundry, and a Guest Suite
  - Owner's Suite at the rear of the home has a Large Walk-In Closet; Owner's Bath features Dual Vanity, Walk-In Shower, 2 Linen Closet and a Private Water Closet
  - The Guest Suite is a Large Bedroom at the Front of the Home with a Full Private Bathroom and a Walk-In
- [Read More Online](#)

## Available Elevations

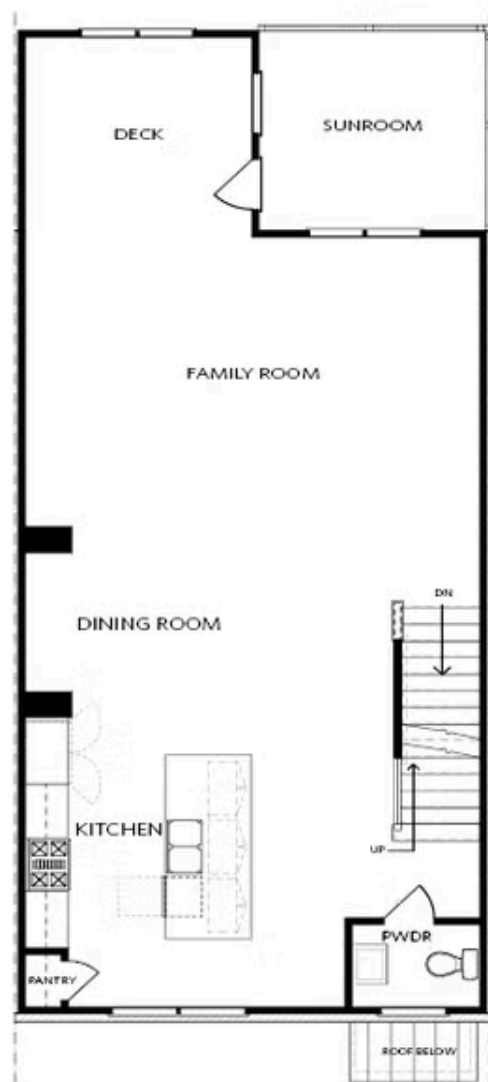




Elevation T2

Want to Know More  
About This Home?

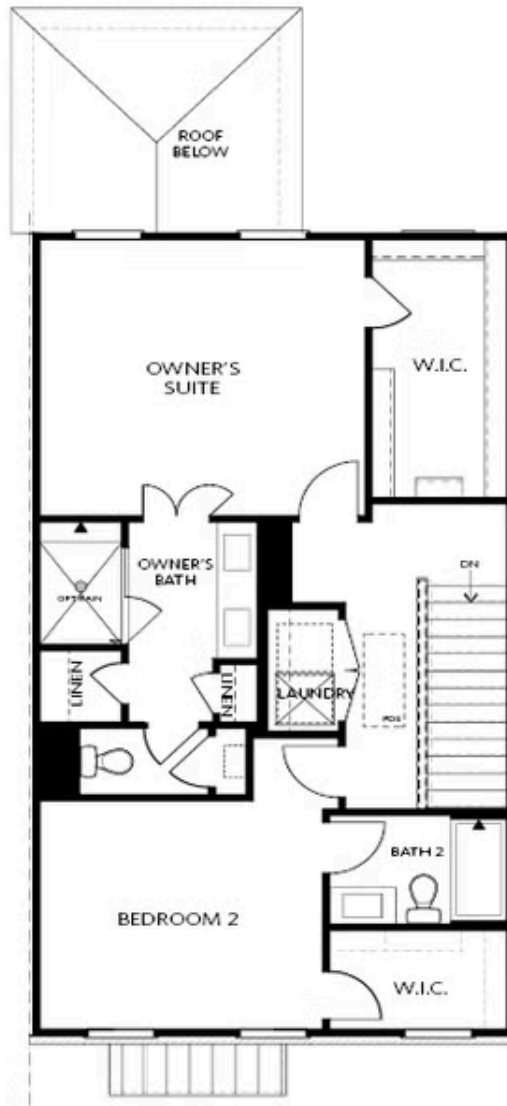
CONTACT OUR COMMUNITY SALES MANAGER  
Call Us @ 470.514.6999



Elevation T2

Want to Know More  
About This Home?

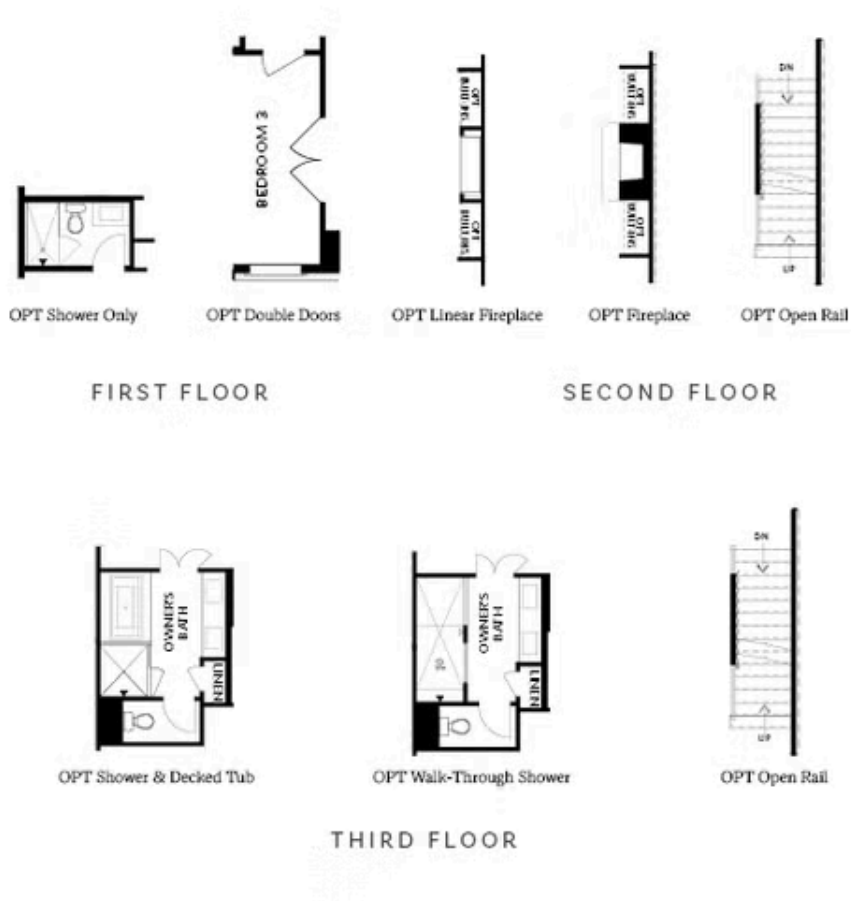
CONTACT OUR COMMUNITY SALES MANAGER  
Call Us @ 470.514.6999



Elevation T2

Want to Know More  
About This Home?

CONTACT OUR COMMUNITY SALES MANAGER  
Call Us @ 470.514.6999



Want to Know More  
About This Home?

CONTACT OUR COMMUNITY SALES MANAGER  
Call Us @ 470.514.6999