




PRICED FROM
\$625,900

 2,162 - 2,192 Sq Ft

 3 Beds

 3.5 Baths

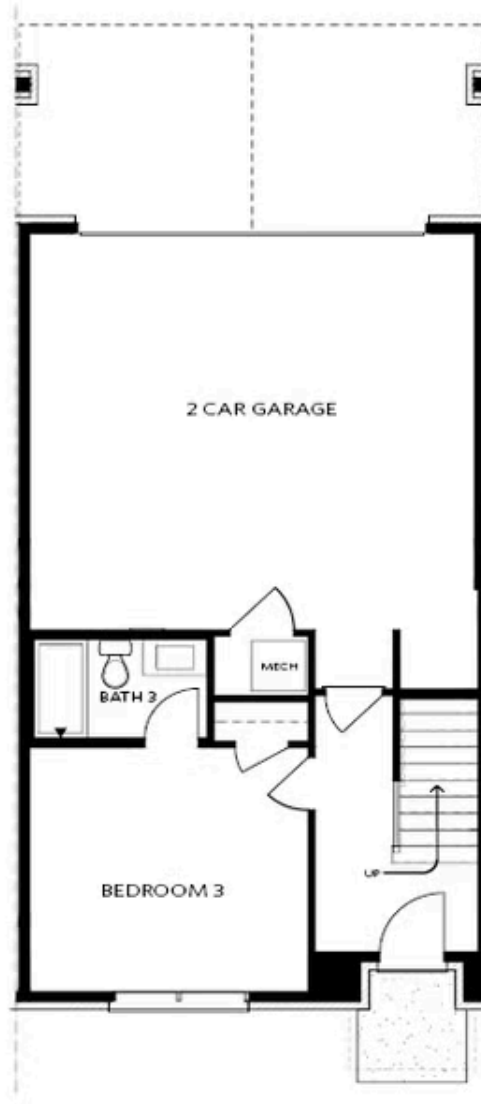
 2 Car Garage

 3.0 Story

- Terrace Entry Home with a small Foyer
 - Bedroom with a Full Bath on the Terrace
 - Open Main Level Concept including a Sunroom and Private Covered Deck off the Family Room
 - Gourmet Kitchen with a Large Island in the Front of the Home
 - Third Floor Features an the Owner's Suite, Laundry, and a Guest Suite
 - Owner's Suite at the rear of the home has a Large Walk-In Closet; Owner's Bath features Dual Vanity, Walk-In Shower, 2 Linen Closet and a Private Water Closet
 - The Guest Suite is a Large Bedroom at the Front of the Home with a Full Private Bathroom and a Walk-In
- [Read More Online](#)

Available Elevations

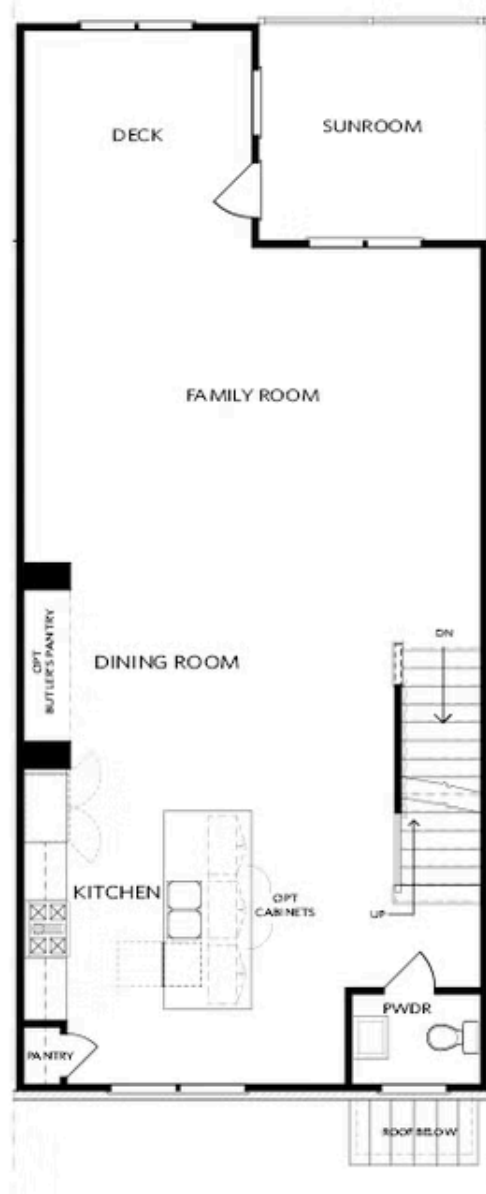




Elevation T2

Want to Know More
About This Home?

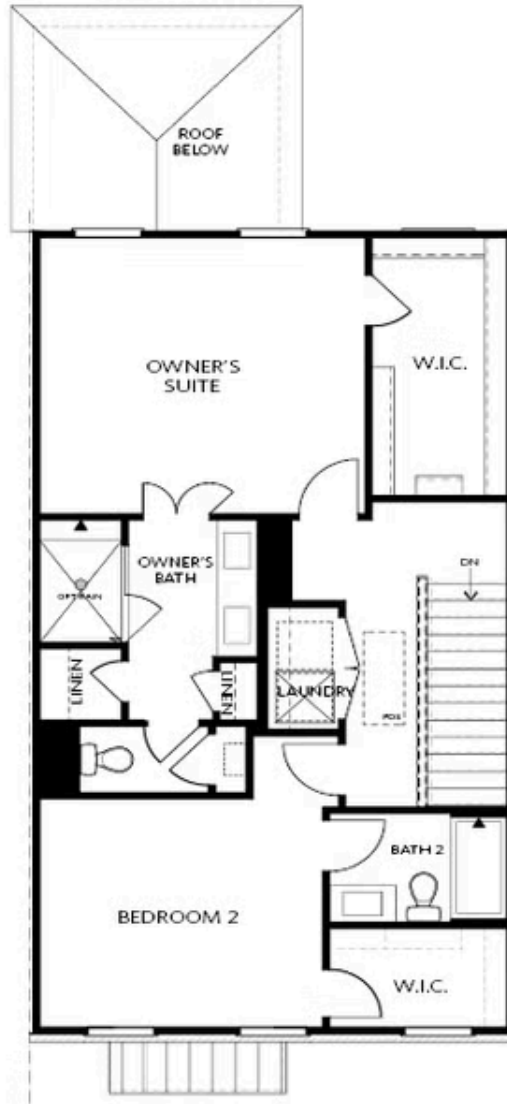
CONTACT OUR COMMUNITY SALES MANAGER
Call Us @ 470.514.6999



Elevation T2

Want to Know More
About This Home?

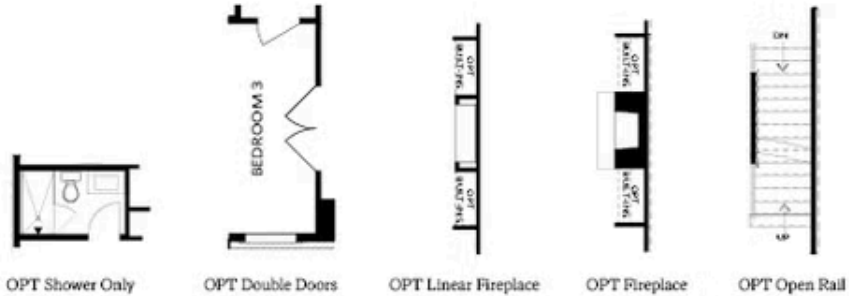
CONTACT OUR COMMUNITY SALES MANAGER
Call Us @ 470.514.6999



Elevation T2

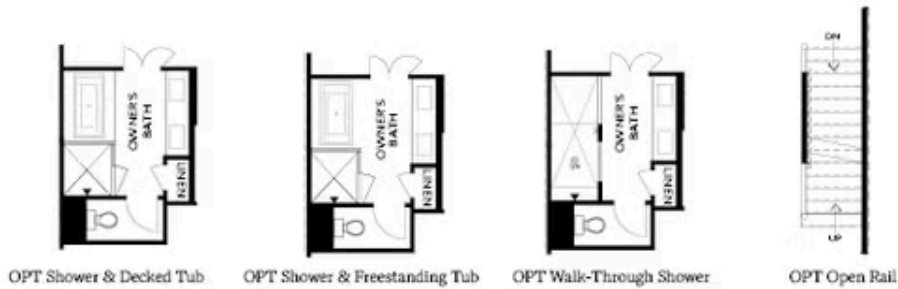
Want to Know More
About This Home?

CONTACT OUR COMMUNITY SALES MANAGER
Call Us @ 470.514.6999



FIRST FLOOR

SECOND FLOOR



THIRD FLOOR

**Want to Know More
 About This Home?**

CONTACT OUR COMMUNITY SALES MANAGER
 Call Us @ 470.514.6999