



PRICED FROM
\$719,700

 2,517 - 2,528 Sq Ft

 3 Beds

 3.5 Baths

 2 Car Garage

 3.0 Story

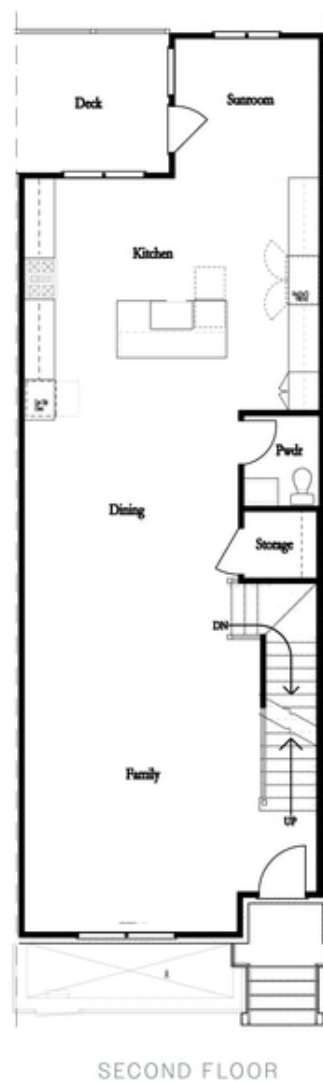
- Gourmet Kitchen with Island
- Owner's Suite and Private Bath with Dual Vanities and Large Walk-In Shower
- Bedroom with Full Bath on Main Level
- Two Car Garage

[Read More Online](#)

Available Elevations

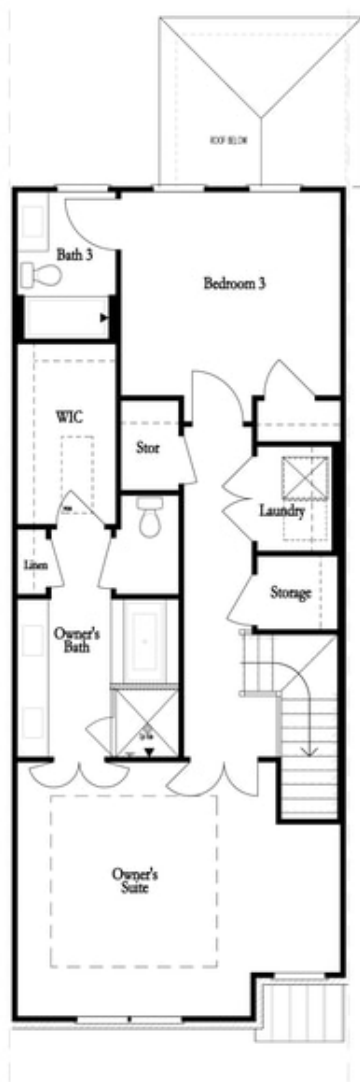


Elevation - Jacobsen II and Benton II

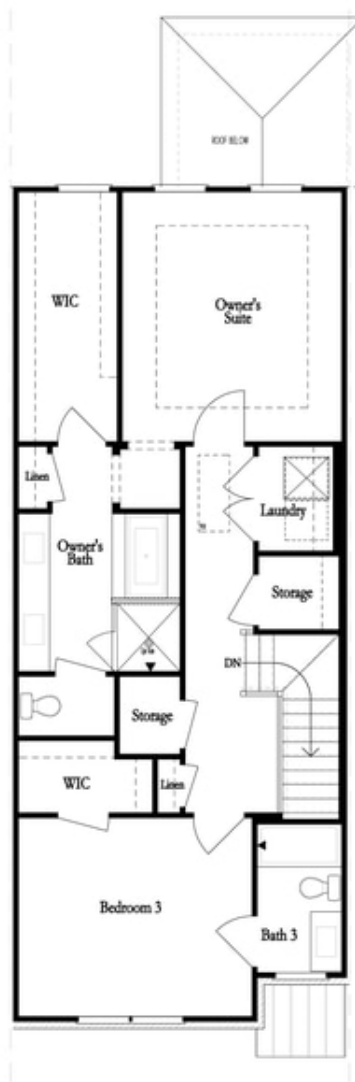


**Want to Know More
About This Home?**

CONTACT OUR COMMUNITY SALES MANAGER
Call Us @ (470) 514-6999



THIRD FLOOR
OWNER'S FRONT



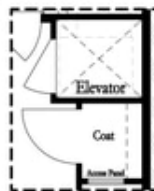
THIRD FLOOR
OWNER'S REAR

**Want to Know More
About This Home?**

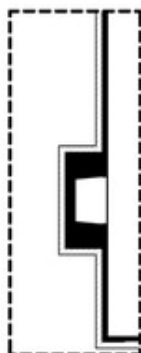
CONTACT OUR COMMUNITY SALES MANAGER
Call Us @ (470) 514-6999



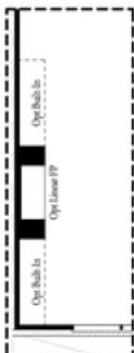
*Opt. Shower
on First Floor Bath*



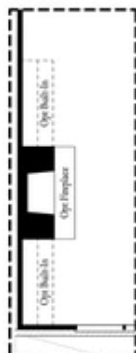
*Opt. Elevator
on First Floor*



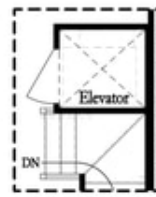
Opt. External Fireplace



Opt. Linear Fireplace



Opt. Fireplace



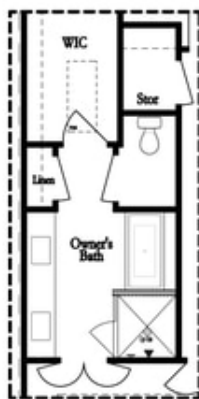
*Opt. Elevator
on Second Floor*

**Want to Know More
About This Home?**

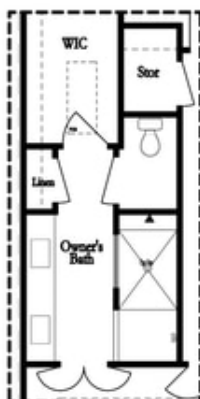
CONTACT OUR COMMUNITY SALES MANAGER
Call Us @ (470) 514-6999



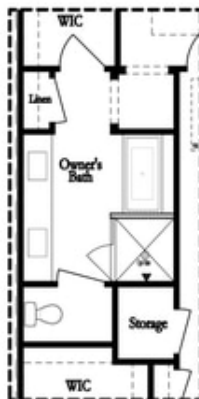
*Opt. Elevator
on Third Floor*



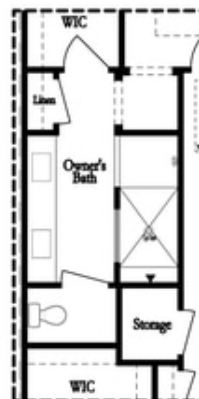
*Opt. Free Standing
Tub w/ Shower*



Opt. Walk-Through Shower



*Opt. Free Standing
Tub w/ Shower*



Opt. Walk-Through Shower

**Want to Know More
About This Home?**

CONTACT OUR COMMUNITY SALES MANAGER
Call Us @ (470) 514-6999