



PRICED AT
\$777,235

 2388 Sq Ft

 3 Beds

 3.5 Baths

 2 Car Garage

 2.0 Story

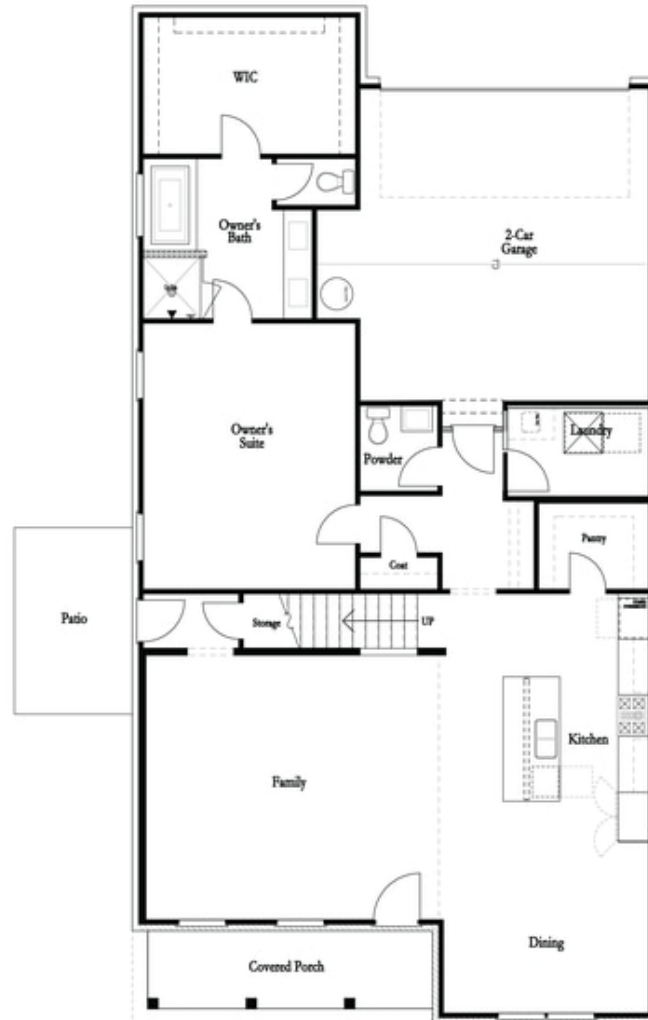
Elevate your life in 2023 with a new home by The Providence Group and \$5,000 towards closing cost when financing with one of Seller's 4 preferred lenders. Owners suite on the main level in the best location in the neighborhood. Looking out your front and back doors you will see the prettiest green view. The Hampton II offers a wide open floor plan with 12' ceilings in the family room, a large gourmet kitchen with walk-in pantry and an oversized dining area. Buyers still have time to get creative and personalize this home at our Design Studio but come quickly! We added extra windows in the family room for additional natural light. 2 additional bedrooms and baths are on the 2nd floor PLUS a roomy Loft for a home office, game night, reading or playroom. Lots of storage space! Come check out this home in our newly gated community backing up to the Chattahoochee River with walking trails down by the River. Clubhouse with fitness center, pool with separate pool house, multiple green lawn spaces, firepits, 4 pickleball courts and HOA-maintained lawns. For driving directions you can use 4411 E. Jones Bridge Road, Peachtree Corners, GA 30092. Photos are not ...

**Want to Know More
About This Home?**

CONTACT OUR NEW HOME NAVIGATOR

NONE

Call Us @ (470) 514-6999

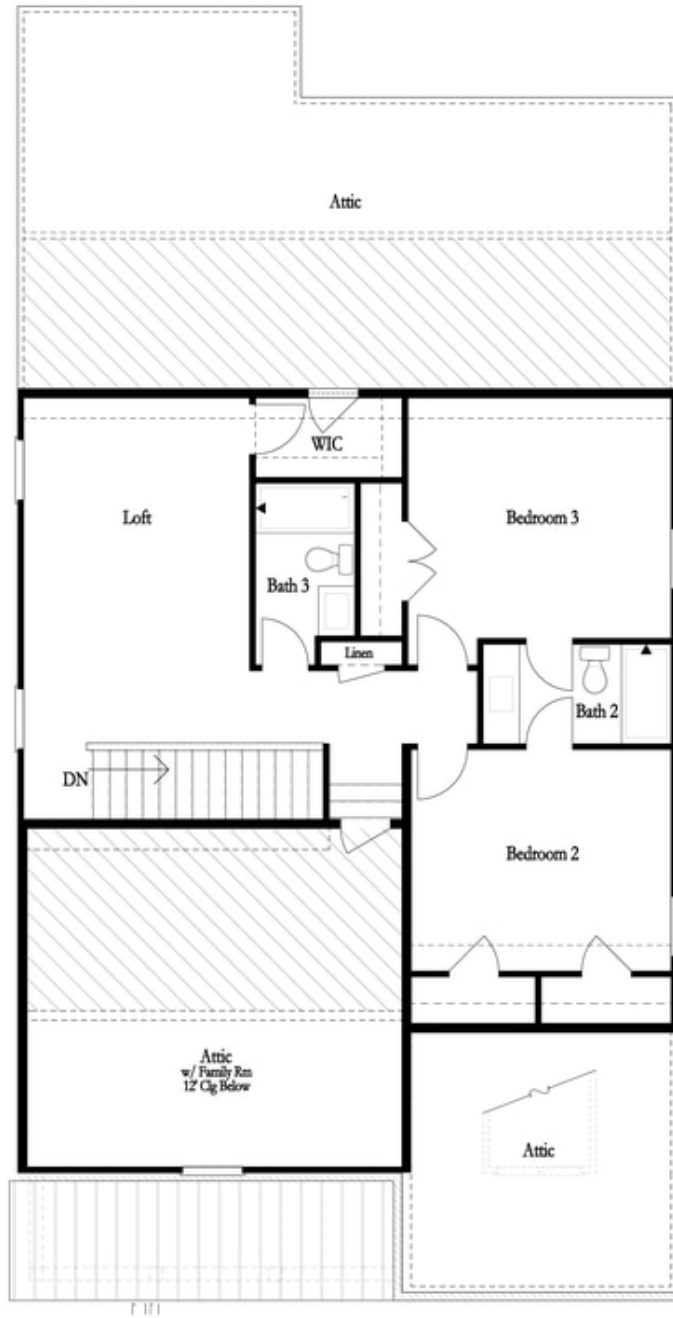


Want to Know More
About This Home?

CONTACT OUR NEW HOME NAVIGATOR

NONE

Call Us @ (470) 514-6999

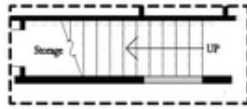


**Want to Know More
About This Home?**

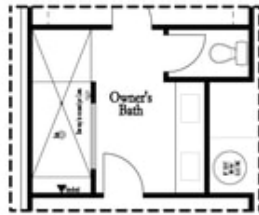
CONTACT OUR NEW HOME NAVIGATOR

NONE

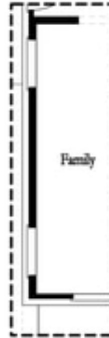
Call Us @ (470) 514-6999



Opt Open Rail



Opt Walk Through Shower



Opt Side Windows

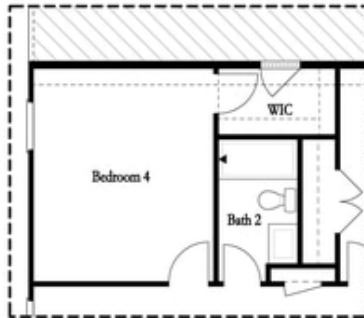


Opt Linear Fireplace

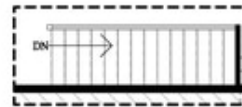


Opt Fireplace

First Floor Options



Opt Bedroom 4



Opt Open Rail

Second Floor Options

**Want to Know More
 About This Home?**

CONTACT OUR NEW HOME NAVIGATOR

NONE

Call Us @ (470) 514-6999