



PRICED AT  
**\$770,200**

 2568 Sq Ft

 4 Beds

 3.5 Baths

 2 Car Garage

 2.0 Story

The best of the best! This community will be packed with amenities- 4 pickle ball courts, a pool, fire pit areas, a clubhouse with a fitness center, green lawn spaces, and a manned gated entrance. And since the community meets the Chattahoochee River, we will have trails along the river. There will be a deck off of the pool looking out into the Chattahoochee River! The Hillsdale plan is not your typical master on the main house. The Providence Group always delivers a home that is elevated from the rest, and that's exactly what this looks and feels like. Nothing was missed in this home, even a prewire for an electric car charger is in the garage. Tankless hot water heater, once you have a tankless you will never go back to the standard hot water heater. The main floor is open and airy, there is the cutest screened-in porch off the back of the home in addition to your side patio, which is right off the kitchen - great for grilling. This home backs up to a beautiful and peaceful common area and this is your view off of your screened-in porch. OWNERS SUITE on the FIRST FLOOR, mega ...

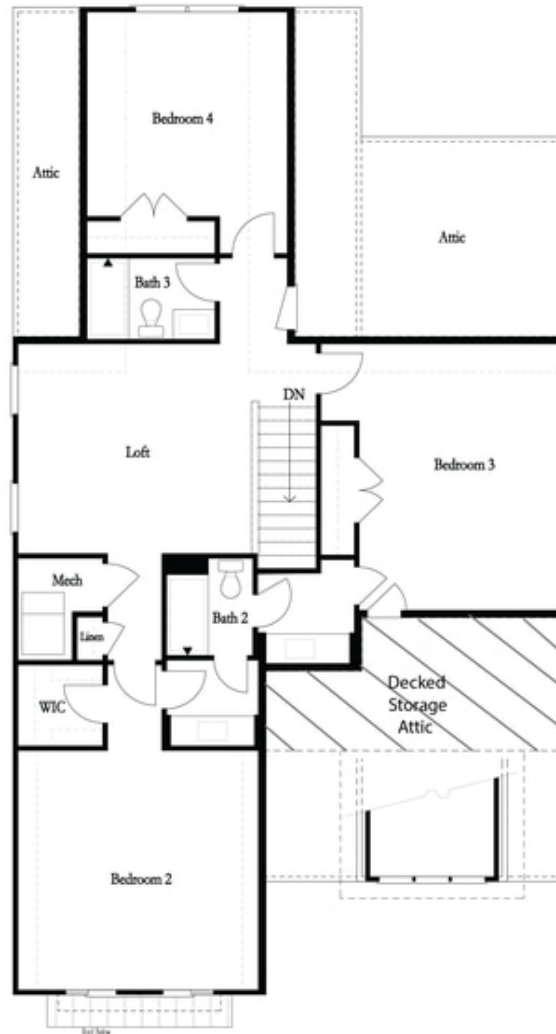
**Want to Know More  
About This Home?**

CONTACT OUR NEW HOME NAVIGATOR  
Call Us @ (470) 514-6999



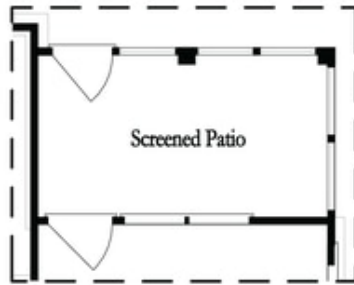
**Want to Know More  
About This Home?**

CONTACT OUR NEW HOME NAVIGATOR  
Call Us @ (470) 514-6999



**Want to Know More  
About This Home?**

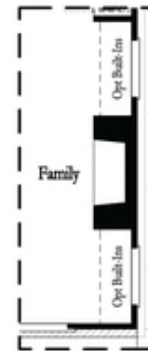
CONTACT OUR NEW HOME NAVIGATOR  
Call Us @ (470) 514-6999



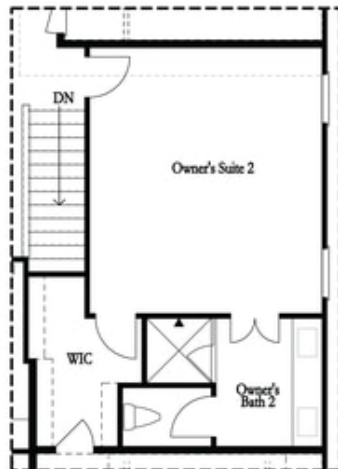
Optional Screened Patio



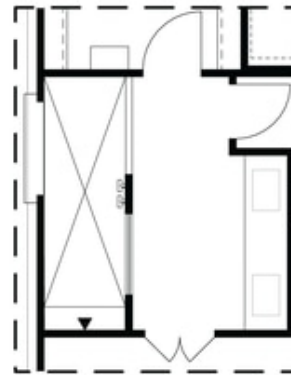
Optional Linear  
 Fireplace



Included Fireplace  
 36" Direct Vent



Optional 2nd Owners Suite  
 in lieu of Bedroom 3



Optional Owner's  
 Walk-In Shower

**Want to Know More  
 About This Home?**

CONTACT OUR NEW HOME NAVIGATOR  
 Call Us @ (470) 514-6999