



PRICED AT
\$697,600

 2388 Sq Ft

 3 Beds

 3.5 Baths

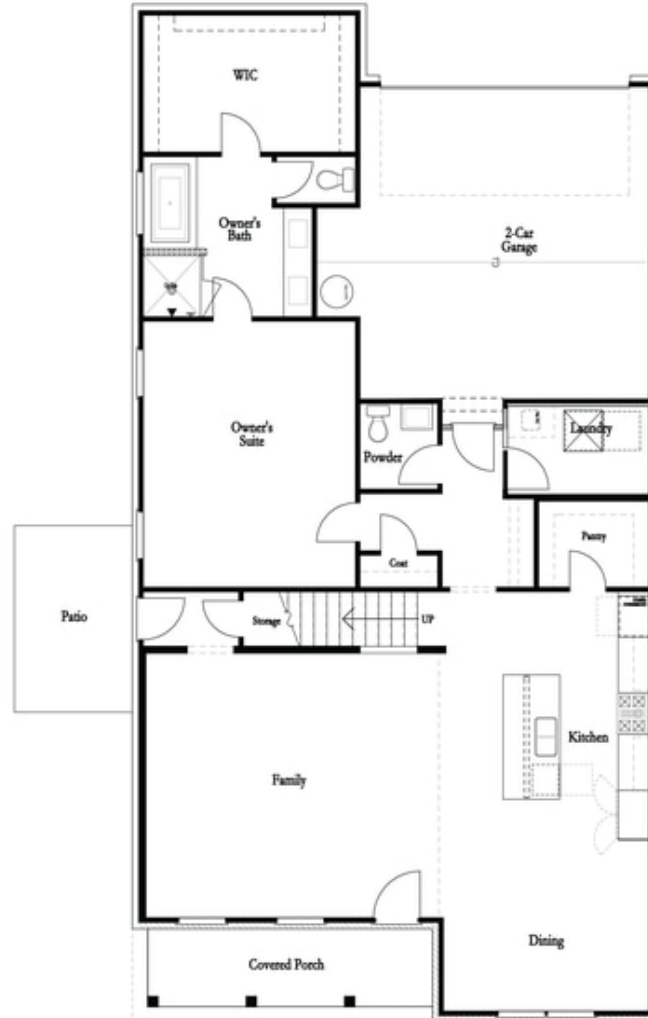
 2 Car Garage

 2.0 Story

Owners suite on the main level with the best view and 3 sides brick. You do not want to miss this opportunity. The Hampton II offers a wide open floor plan with 12' ceilings in the family room, large gourmet kitchen with walk-in pantry and an oversized dining area. Buyers still have time to get creative and personalize this home at our Design Studio. Come check out this home in our newly gated community backing up to the Chatahoochee River plus state-of-the-art amenities w/Swim, fitness, parks, clubhouse, fire pits, pickle ball courts etc. For driving directions you can use 4411 E. Jones Bridge Road, Peachtree Corners, GA 30092. Photos are not of actual home but similar plan.

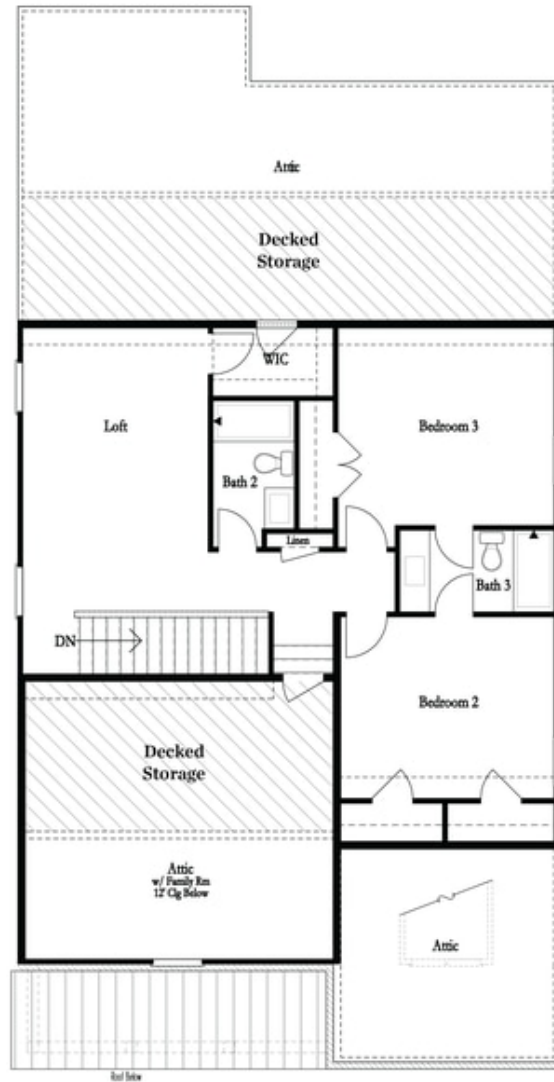
**Want to Know More
About This Home?**

CONTACT OUR NEW HOME NAVIGATOR
Call Us @ (470) 514-6999



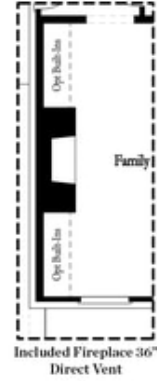
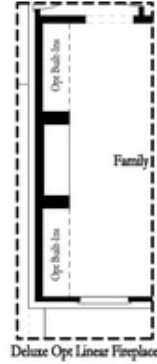
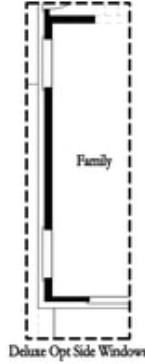
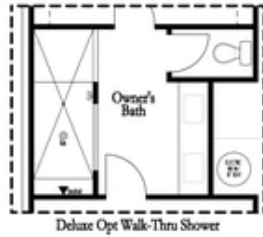
**Want to Know More
About This Home?**

CONTACT OUR NEW HOME NAVIGATOR
Call Us @ (470) 514-6999

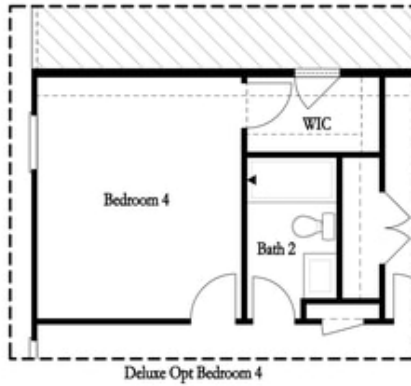


**Want to Know More
About This Home?**

CONTACT OUR NEW HOME NAVIGATOR
Call Us @ (470) 514-6999



1st Floor Options



2nd Floor Options

**Want to Know More
 About This Home?**

CONTACT OUR NEW HOME NAVIGATOR
 Call Us @ (470) 514-6999