



PRICED AT
\$712,400

 2568 Sq Ft

 4 Beds

 3.5 Baths

 2 Car Garage

 2.0 Story

This corner lot gives you abundant natural light. The Hillsdale floor plan offers an owner's suite on the main level and a covered back patio plus a side back stone patio. 10' ceilings on the main. The gourmet kitchen has lots of countertop space with an extra-large island. There are so many windows on the main level that makes your home feel bright and sunny on any day. Buyers still have time to get creative and personalize this home at our Design Studio. Stop by today to see our wonderful community backing up to the Chatahoochee River, not to mention our state-of-the-art amenities w/Swim, fitness, parks, clubhouse, fire pits, pickle ball courts etc. For driving directions you can use 4411 E. Jones Bridge Road, Peachtree Corners, GA 30092. Photos are not of actual home but similar plan.

**Want to Know More
About This Home?**

CONTACT OUR NEW HOME NAVIGATOR

NONE

Call Us @ (470) 514-6999



FIRST FLOOR

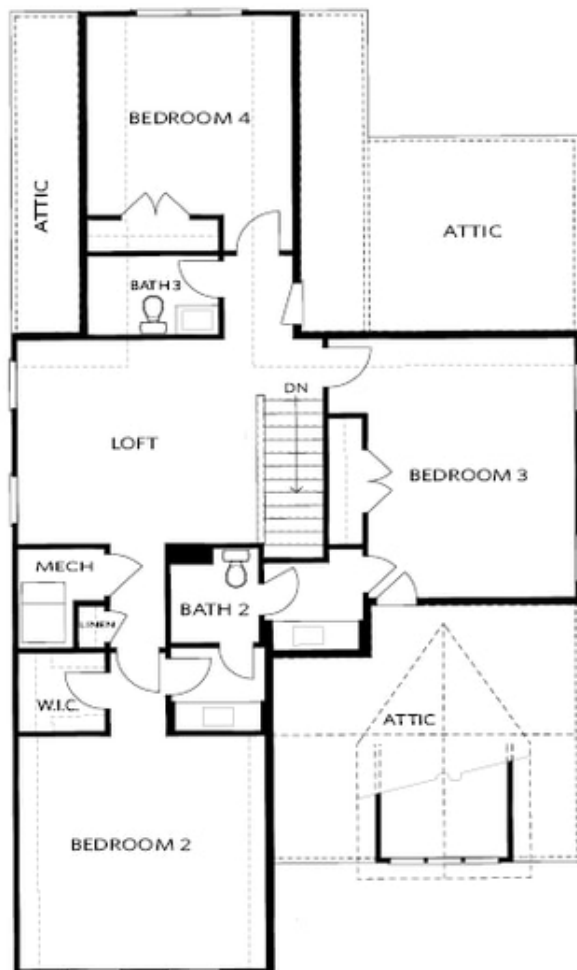
Elevation A

**Want to Know More
About This Home?**

CONTACT OUR NEW HOME NAVIGATOR

NONE

Call Us @ (470) 514-6999



SECOND FLOOR

Elevation A

**Want to Know More
About This Home?**

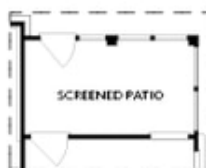
CONTACT OUR NEW HOME NAVIGATOR

NONE

Call Us @ (470) 514-6999



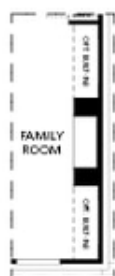
OPT Large Shower



OPT Screened Patio



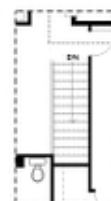
OPT 2nd Owner's Suite ilo BDR 3



OPT Linear Fireplace



OPT Fireplace



OPT Open Hand Rail

FIRST FLOOR

SECOND FLOOR

Elevation A

Want to Know More
About This Home?

CONTACT OUR NEW HOME NAVIGATOR

NONE

Call Us @ (470) 514-6999