



PRICED AT
\$682,815

 2201 Sq Ft

 3 Beds

 2.5 Baths

 2 Car Garage

 3.0 Story

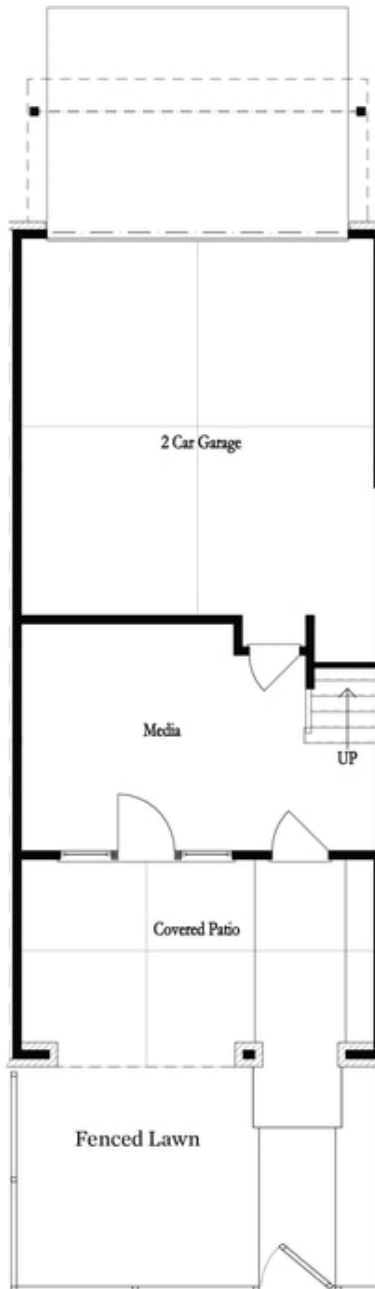
LAST OPPORTUNITIES OF PHASE 1 to overlook the main lawn in the rear of our Waterside community! Explore the gorgeous Benton I floorplan that has many upgrades throughout! The main level has 10' ceilings making this home feel extra spacious. An Iron Ore painted shiplap fireplace serves as a focal point in the living room. Willow Gray cabinets adorn the kitchen, Owner's Bathroom and all Secondary Bathrooms. You will find beautiful designer finishes in the gourmet kitchen with stunning Cambria countertops, stainless appliances, tile backsplash with a herringbone pattern and matte black hardware and faucet. An Iron Ore painted Island ties in the dark hues from the fireplace to create a cohesive and high design feel. From the kitchen, dining and family room you have amazing views with 8 ft windows that overlook the large Community Green. Tucked away behind the kitchen is a sunroom that could double as a home office space with access to the deck. Head downstairs to the terrace level where you find a large room that you could use for whatever suits your lifestyle - media/office/game/exercise room. Double Doors take you outside to the covered patio with its own outdoor fireplace in the front of ...

**Want to Know More
About This Home?**

CONTACT OUR NEW HOME NAVIGATOR

NONE

Call Us @ (470) 514-6999

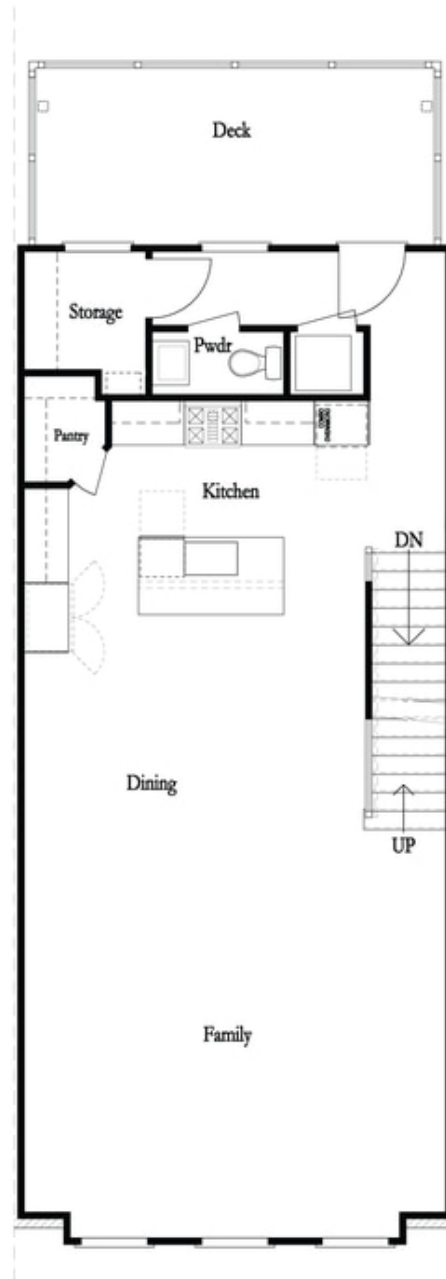


**Want to Know More
About This Home?**

CONTACT OUR NEW HOME NAVIGATOR

NONE

Call Us @ (470) 514-6999

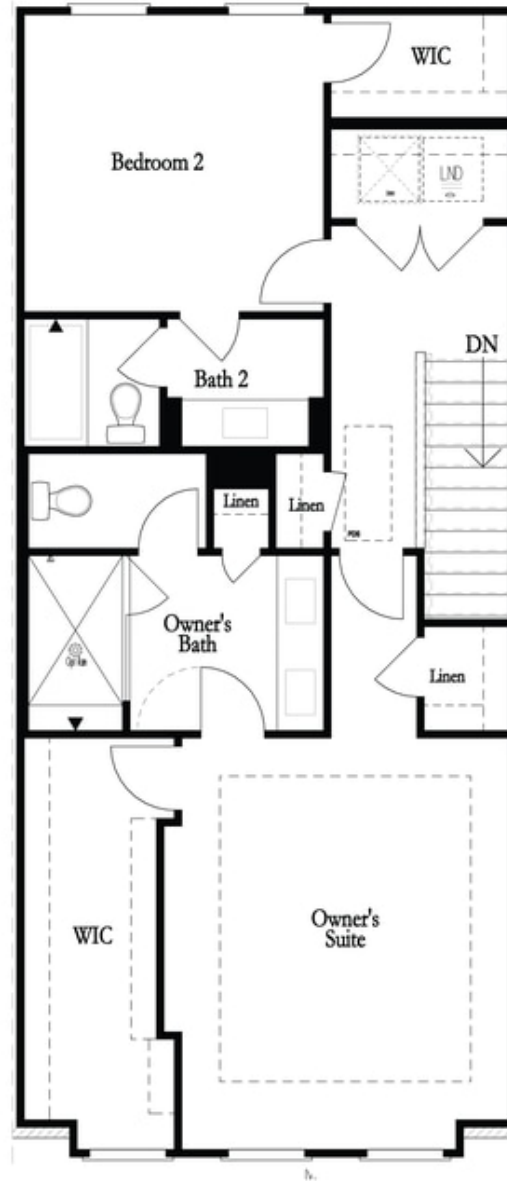


**Want to Know More
About This Home?**

CONTACT OUR NEW HOME NAVIGATOR

NONE

Call Us @ (470) 514-6999

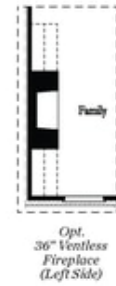
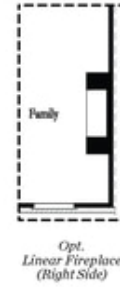
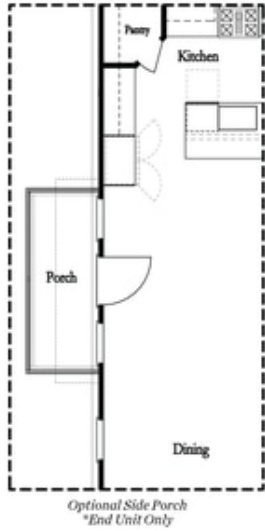


**Want to Know More
About This Home?**

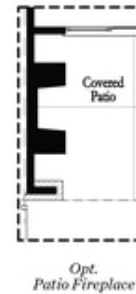
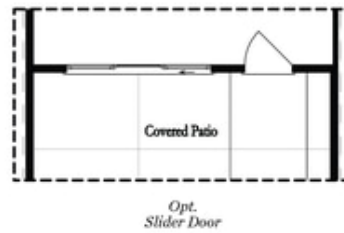
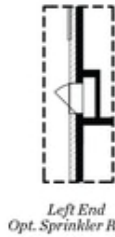
CONTACT OUR NEW HOME NAVIGATOR

NONE

Call Us @ (470) 514-6999



Main Level Options



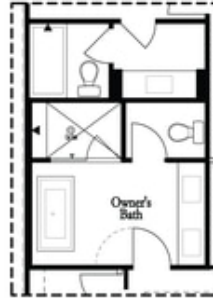
Terrace Level Options

Want to Know More
About This Home?

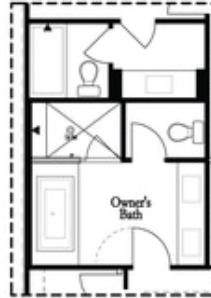
CONTACT OUR NEW HOME NAVIGATOR

NONE

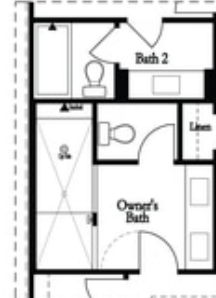
Call Us @ (470) 514-6999



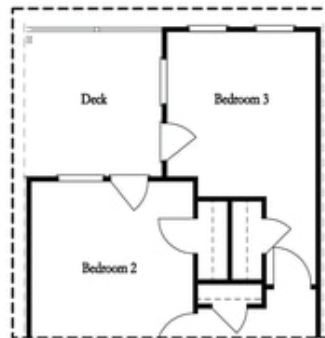
*Opt. Freestanding
 Tub/Shower Combo*



*Opt. Decked
 Tub/Shower Combo*



Opt. Walk-Through Shower



*Opt. Bedroom 3
 *Only Available with Sunroom option
 Laundry Moved to Main Level w/ this Opt.

Upper Level Options

**Want to Know More
 About This Home?**

CONTACT OUR NEW HOME NAVIGATOR

NONE

Call Us @ (470) 514-6999