




PRICED AT
\$564,800

 2517 Sq Ft

 3 Beds

 3.5 Baths

 2 Car Garage

 3.0 Story

Benton II R Townhome Under Construction in Peachtree Corners. Buyers still have to select interior finishes at our Design Studio so come quick! Great open floor plan design with large bedrooms. Sunroom off the main floor that has access to a private deck. Located minutes from The Forum. New Gated Master Planned Community is backing up to the Chattahoochee River, surrounded by beautiful lush trees and the opportunity to take a walk down to the River or enjoy state of the art amenities w/Swim, fitness, parks, clubhouse, etc. Community w/single family & townhomes Visiting our office is by appointment only. For driving directions, you can use 4411 E. Jones Bridge Road, Peachtree Corners, GA 30092

**Want to Know More
About This Home?**

CONTACT OUR COMMUNITY SALES MANAGER
Call Us @ 470.514.6999

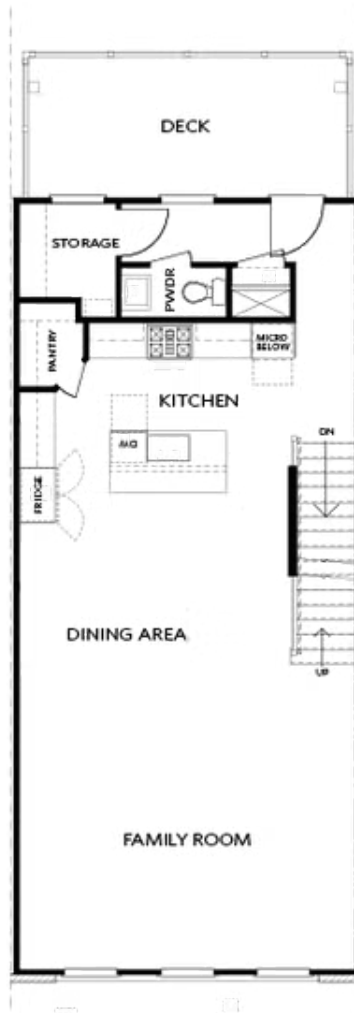


TERRACE

Elevation N

Want to Know More
About This Home?

CONTACT OUR COMMUNITY SALES MANAGER
Call Us @ 470.514.6999



SECOND FLOOR

Elevation N

Want to Know More
About This Home?

CONTACT OUR COMMUNITY SALES MANAGER
Call Us @ 470.514.6999



THIRD FLOOR

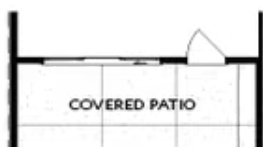
Elevation N

Want to Know More
About This Home?

CONTACT OUR COMMUNITY SALES MANAGER
Call Us @ 470.514.6999



OPT Patio Fireplace

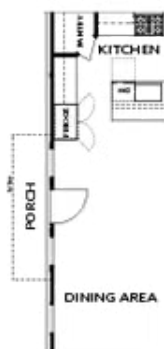


OPT Slider Door

TERRACE



OPT Laundry
(only available with 3rd bedroom opt)



OPT Side Porch
(end unit only)

SECOND FLOOR



OPT Left Side
Linear Fireplace



OPT Left Side
Fireplace



OPT Right Side
Fireplace



OPT Right Side
Linear Fireplace



OPT Sunroom

OPTIONS

Want to Know More
About This Home?

CONTACT OUR COMMUNITY SALES MANAGER
Call Us @ 470.514.6999