



PRICED AT
\$738,095

 2201 Sq Ft

 3 Beds

 2.5 Baths

 2 Car Garage

 3.0 Story

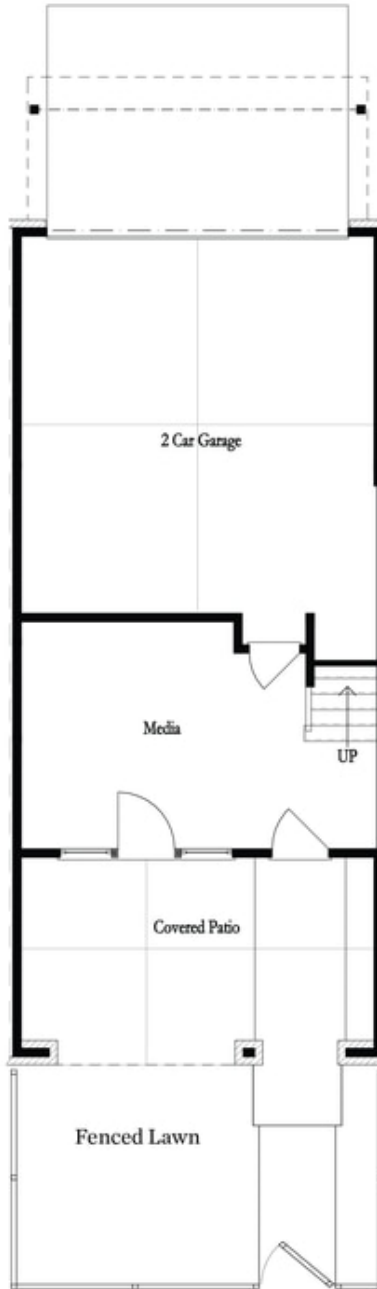
Elevate your life in 2023 with a new home by The Providence Group and \$5,000 towards closing cost when financing with one of Seller's preferred lenders. You will have easy access to our full-sized pool, 2-story clubhouse with full gym, and Amenity Area. END UNIT Benton I floorplan that has many upgrades throughout. Find beautiful designer finishes in the gourmet kitchen with stunning Cambria countertops, stainless appliances, tile backsplash and large island for casual dining! From the kitchen, you have a perfect view of dining and family room. Around the corner from the kitchen is a sunroom that could double as a home office space. This room also gives you access to the deck. Head downstairs to the terrace level where you find a large room that you could use for whatever suits your lifestyle - media/office/game/exercise room. Sliding doors will take you outside to the covered patio with its own outdoor fireplace! The upper level hosts your spacious owners suite with large walk in closet. The owners bath has a dual vanity and large tiled shower. 2 secondary bedrooms with a shared bath are located down the hallway. 2 car garage on the back with alley access. New Gated ...

**Want to Know More
About This Home?**

CONTACT OUR NEW HOME NAVIGATOR

NONE

Call Us @ (470) 514-6999

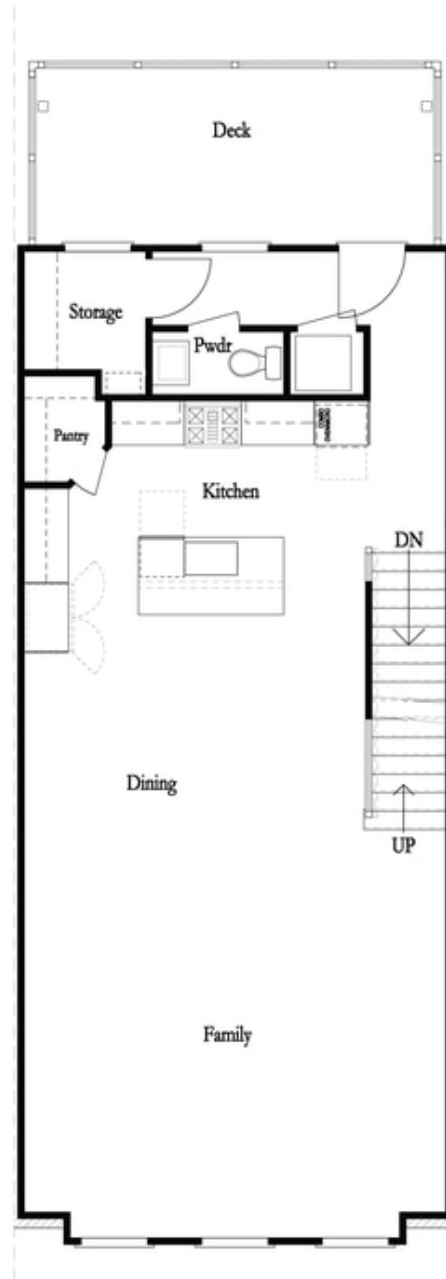


**Want to Know More
About This Home?**

CONTACT OUR NEW HOME NAVIGATOR

NONE

Call Us @ (470) 514-6999

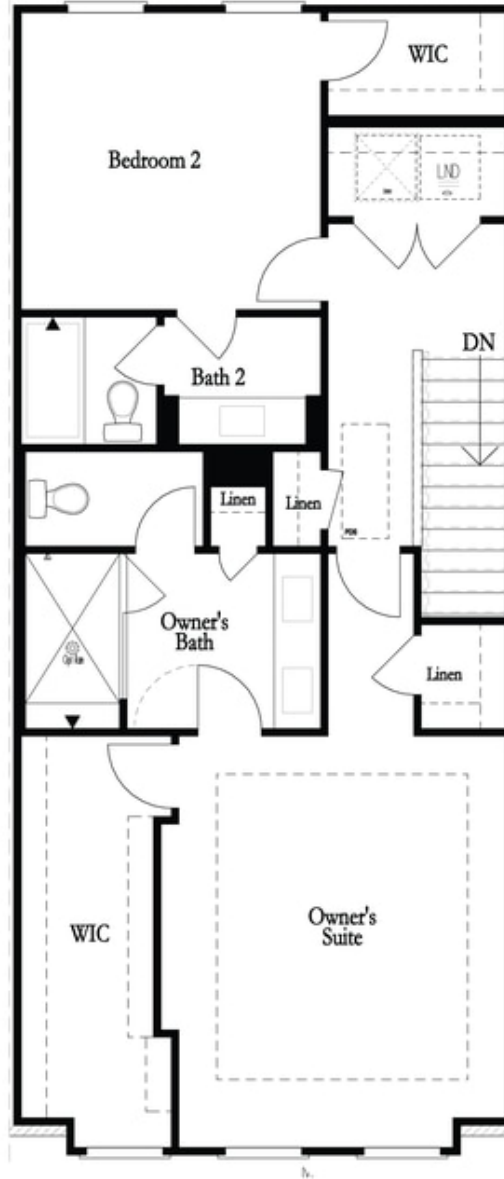


**Want to Know More
About This Home?**

CONTACT OUR NEW HOME NAVIGATOR

NONE

Call Us @ (470) 514-6999

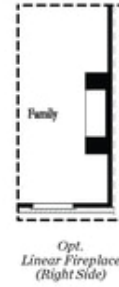
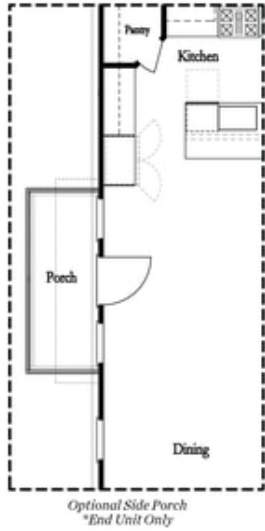


**Want to Know More
About This Home?**

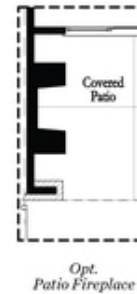
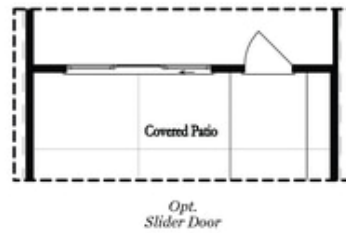
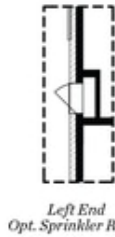
CONTACT OUR NEW HOME NAVIGATOR

NONE

Call Us @ (470) 514-6999



Main Level Options



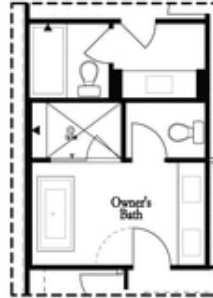
Terrace Level Options

Want to Know More
About This Home?

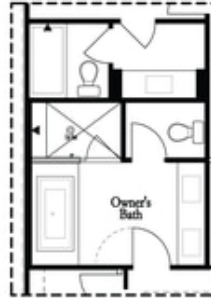
CONTACT OUR NEW HOME NAVIGATOR

NONE

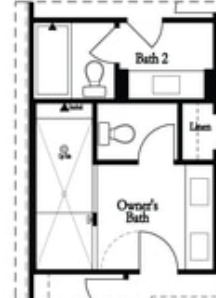
Call Us @ (470) 514-6999



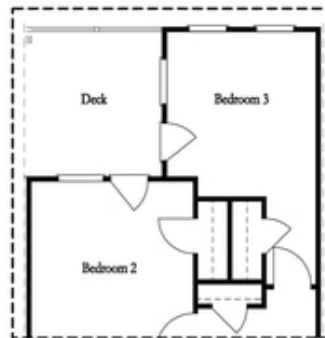
*Opt. Freestanding
 Tub/Shower Combo*



*Opt. Decked
 Tub/Shower Combo*



Opt. Walk-Through Shower



*Opt. Bedroom 3
 *Only Available with Sunroom option
 Laundry Moved to Main Level w/ this Opt.

Upper Level Options

**Want to Know More
 About This Home?**

CONTACT OUR NEW HOME NAVIGATOR

NONE

Call Us @ (470) 514-6999