



PRICED AT
\$652,880

 2163 Sq Ft

 3 Beds

 3.5 Baths

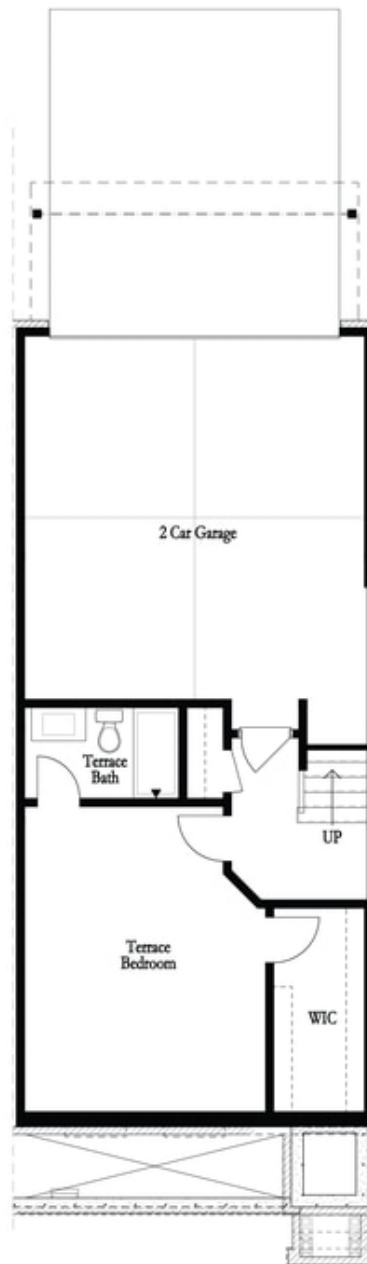
 2 Car Garage

 3.0 Story

Elevate your life in 2023 with a new home by The Providence Group and \$5,000 towards closing cost when financing with one of Seller's 4 preferred lenders. **END UNIT!** Beautiful large open-plan townhome one mile from shops, breweries, restaurants, movies and festivals at the Forum. Come check out all the natural light soaring through this home. Kitchen boast GE appliances, a microwave/oven combo, a dishwasher and a gas cooktop giving you all the gourmet feels. Generous island perfect for meal prepping and serving. From the kitchen you can see straight to your dining area and living room- don't miss the play on TV or miss out on the conversation! The owner's suite is upstairs and 2 separate closets both large in size. The owner's suite has dual vanity built-in tub and large shower An additional secondary bedroom and bath upstairs as well and the other guest bedroom and bath is downstairs in the terrace level. All of this plus a bright sunroom and deck off of the rear. Waterside is a little slice of heaven backing up to the Chattahoochee River. Take a walk on one of our many future trails along the river. No excuse to not get your ...

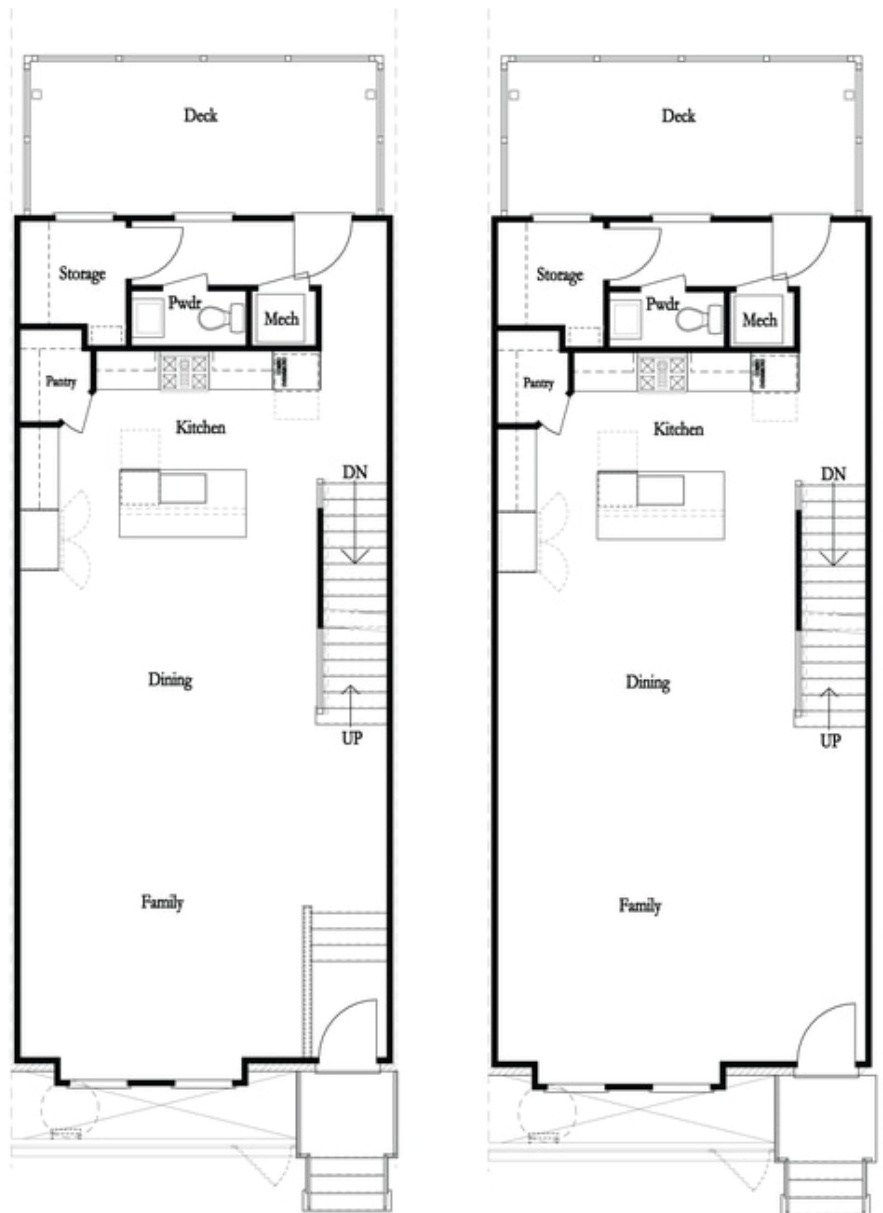
**Want to Know More
About This Home?**

CONTACT OUR NEW HOME NAVIGATOR
Call Us @ (470) 514-6999



**Want to Know More
About This Home?**

CONTACT OUR NEW HOME NAVIGATOR
Call Us @ (470) 514-6999



**Want to Know More
About This Home?**

CONTACT OUR NEW HOME NAVIGATOR
Call Us @ (470) 514-6999



**Want to Know More
About This Home?**

CONTACT OUR NEW HOME NAVIGATOR
Call Us @ (470) 514-6999

* Not All Options are Available in All Communities



*Left End
 Opt. Sprinkler Room*

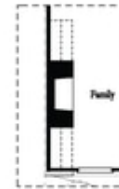


*Right End
 Opt. Sprinkler Room*

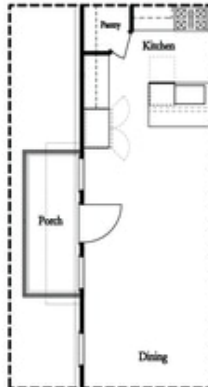
Terrace Level Options



Laundry with Optional Bedroom 3 Only



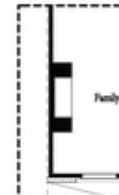
Opt. 36\"/>



*Optional Side Porch
 End Unit Only



Opt. Sunroom



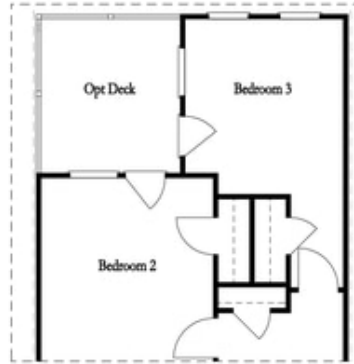
Opt. Linear Fireplace

Main Level Options

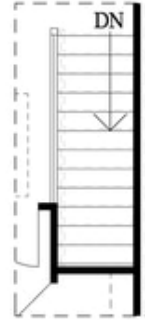
**Want to Know More
 About This Home?**

CONTACT OUR NEW HOME NAVIGATOR
 Call Us @ (470) 514-6999

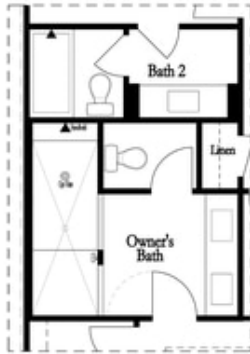
Options



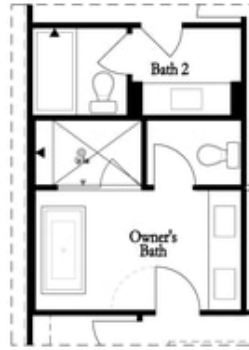
Opt. Bedroom 3
**Only available w/ sunroom option*
**Laundry moved to main floor w/ this opt.*



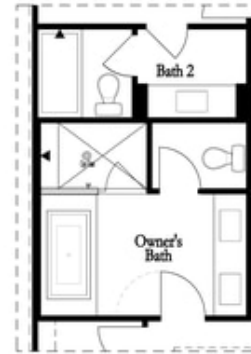
Opt. Open Rail



Opt. Walk-Through Shower



Opt. Freestanding Tub/Shower Combo



Opt. Decked Tub/Shower Combo

Third Floor Options

**Want to Know More
 About This Home?**

CONTACT OUR NEW HOME NAVIGATOR
 Call Us @ (470) 514-6999