



PRICED AT  
**\$635,840**

 2395 Sq Ft

 3 Beds

 3.5 Baths

 2 Car Garage

 3.0 Story

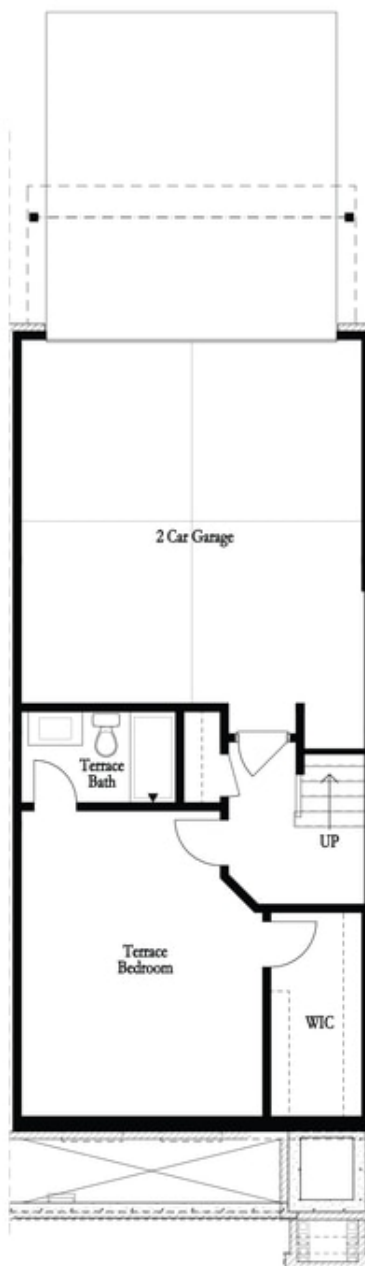
Elevate your life in 2023 with a new home by The Providence Group and \$5,000 towards closing cost when financing with one of Seller's 4 preferred lenders. In the heart of Peachtree Corners. Top-of-the-line upgrades have been added to this home. The home is under construction and will be ready by Spring of 2023! You have to check out this location. Hardwoods on the main floor and terrace level! Family room with fireplace wrapped in shiplap, open concept dining area, and a sunroom right off the kitchen. The kitchen offers White kitchen cabinets and a midnight navy island with gorgeous Cambria Quartz countertops that have veins of blue to really bring out the island. Head upstairs to your Owners Suite to relax in your freestanding tub after a long day. An additional secondary bedroom with its own private bath is down the hall. On the terrace level, you have a 3rd bedroom and private bath plus a 2 car garage. Gated Master Planned Community backing up to the Chattahoochee River, 1 mile from The Forum w/shops, breweries, and restaurants. The awesome amenity package includes clubhouse, park areas, pool, 4 pickleball courts, trails down by the River, fitness ctr. a manned ...

**Want to Know More  
About This Home?**

CONTACT OUR NEW HOME NAVIGATOR

**NONE**

Call Us @ (470) 514-6999

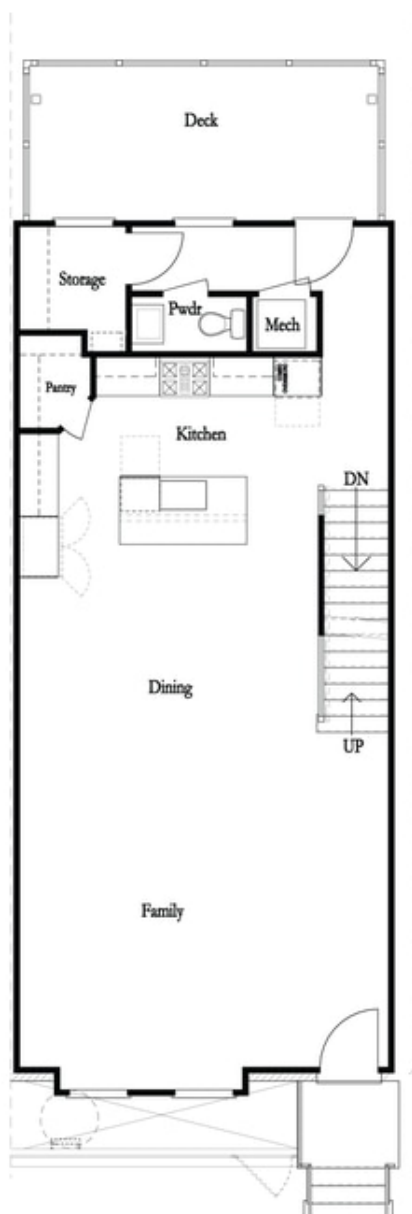
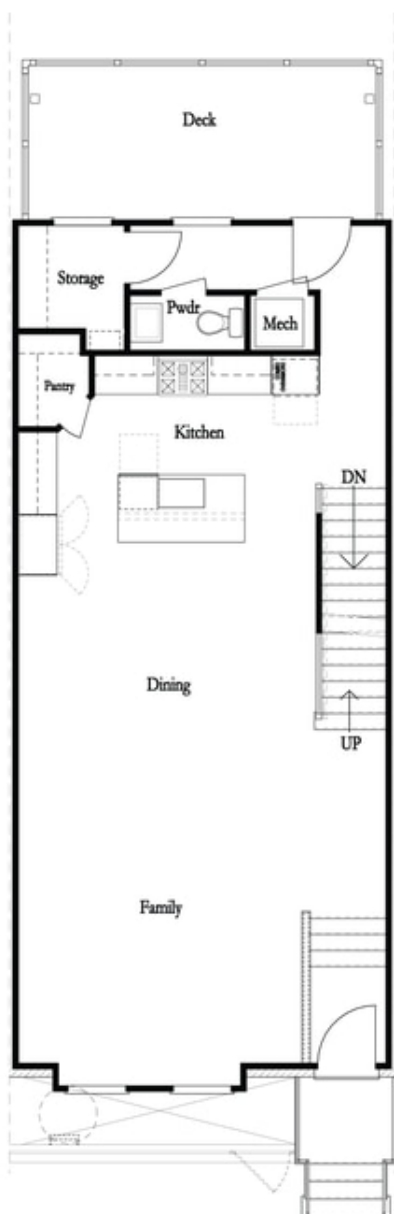


Want to Know More  
About This Home?

CONTACT OUR NEW HOME NAVIGATOR

**NONE**

Call Us @ (470) 514-6999



**Want to Know More  
About This Home?**

CONTACT OUR NEW HOME NAVIGATOR

**NONE**

Call Us @ (470) 514-6999



**Want to Know More  
About This Home?**

CONTACT OUR NEW HOME NAVIGATOR

**NONE**

Call Us @ (470) 514-6999

\* Not All Options are Available in All Communities

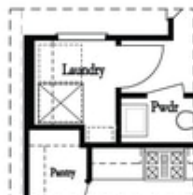


*Left End  
Opt. Sprinkler Room*

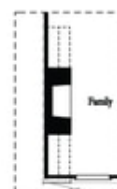


*Right End  
Opt. Sprinkler Room*

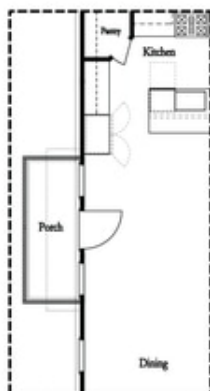
#### Terrace Level Options



*Laundry with Optional Bedroom 3 Only*



*Opt. 36" Fireplace*



*Optional Side Porch  
\*End Unit Only*



*Opt. Sunroom*



*Opt. Linear Fireplace*

#### Main Level Options

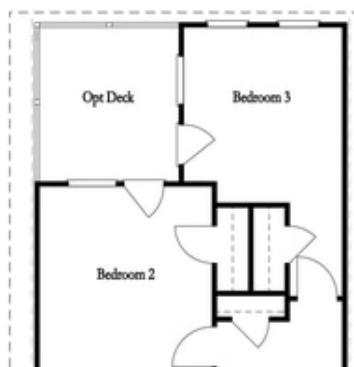
**Want to Know More  
About This Home?**

CONTACT OUR NEW HOME NAVIGATOR

**NONE**

Call Us @ (470) 514-6999

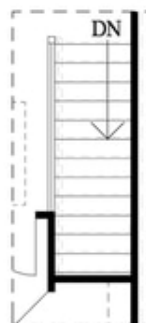
### Options



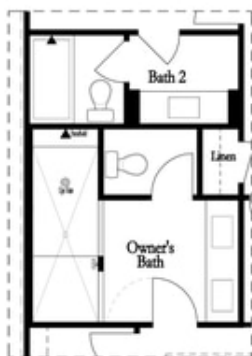
Opt. Bedroom 3

\*Only available w/ sunroom option

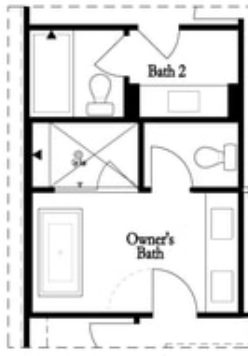
\*Laundry moved to main floor w/ this opt.



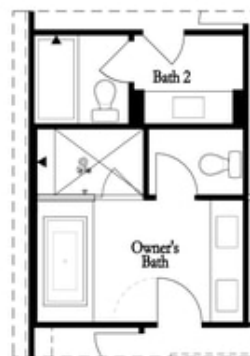
Opt. Open Rail



Opt. Walk-Through  
Shower



Opt. Freestanding  
Tub/Shower Combo



Opt. Decked  
Tub/Shower Combo

### Third Floor Options

Want to Know More  
About This Home?

CONTACT OUR NEW HOME NAVIGATOR

**NONE**

Call Us @ (470) 514-6999