

PRICED AT  
**\$640,795**

 2201 Sq Ft

 3 Beds

 2.5 Baths

 2 Car Garage

 3.0 Story

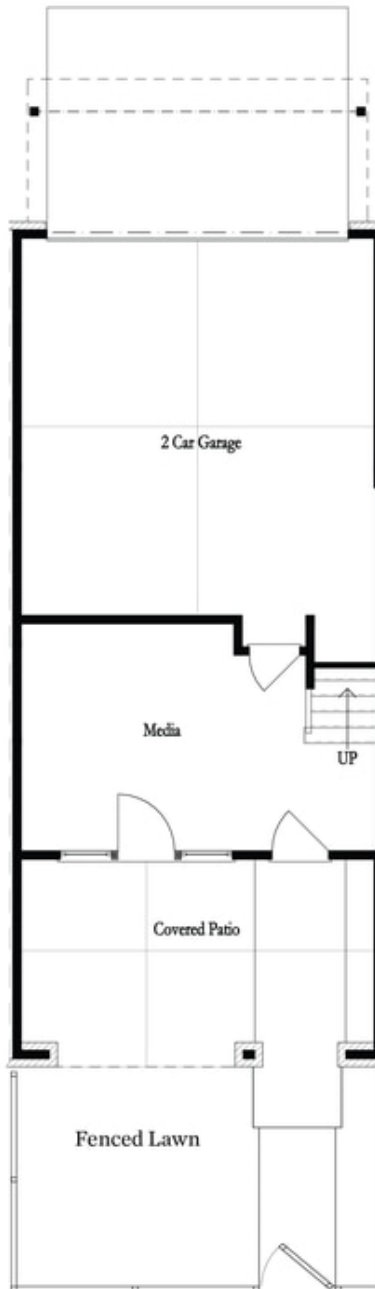
Elevate your life in 2023 with a new home by The Providence Group and \$5,000 towards closing cost when financing with one of Seller's 4 preferred lenders. Comfortable and Beautiful! **STANDING INVENTORY - QUICK CLOSING!** This plan gives you an abundance of natural light. One of the highlights of this home is the kitchen, it's gigantic. 3 bedrooms, additional office space and additional flex room. Flex room on terrace level opens up sliding doors to your own outdoor oasis, maintained by the HOA. Covered fireplace outside, a rare and spectacular feature. Gorgeous kitchen with upgraded cabinets, Cambria countertops, stainless steel appliances and large island with view to dining and family room. Three sides brick building located in Peachtree Corners. Come check out this home our wonderful, gated, Master Planned Community backing up to the Chattahoochee River. Take a walk down by the river or enjoy one of our many amenities that are under construction: pool, clubhouse, fitness center, green lawn spaces, fire pit areas, and a pool deck.. If you love nature, this is your place. Large space, great plan, and best location. For driving directions, you can use 4411 E. Jones Bridge Road, Peachtree Corners, GA 30092 Photos are ...

**Want to Know More  
About This Home?**

CONTACT OUR NEW HOME NAVIGATOR

**NONE**

Call Us @ (470) 514-6999

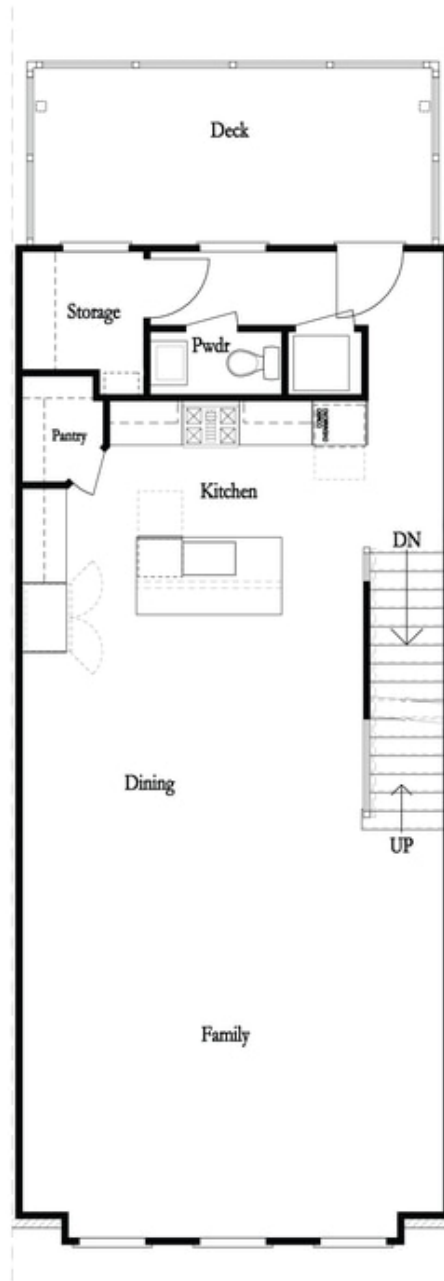


**Want to Know More  
About This Home?**

CONTACT OUR NEW HOME NAVIGATOR

**NONE**

Call Us @ (470) 514-6999



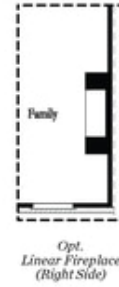
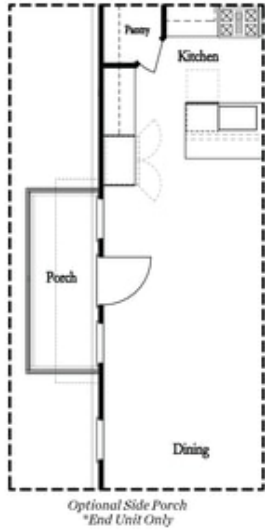
**Want to Know More  
About This Home?**

CONTACT OUR NEW HOME NAVIGATOR

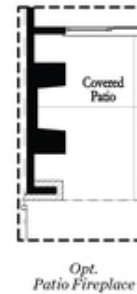
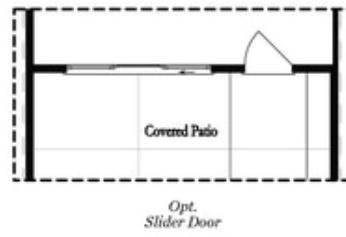
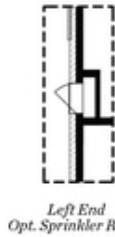
**NONE**

Call Us @ (470) 514-6999





**Main Level Options**



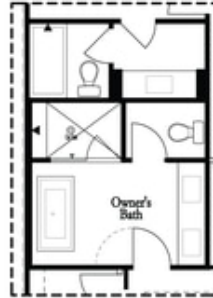
**Terrace Level Options**

**Want to Know More  
About This Home?**

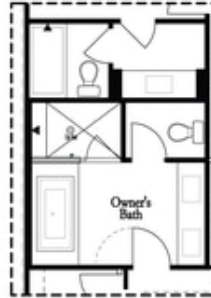
CONTACT OUR NEW HOME NAVIGATOR

**NONE**

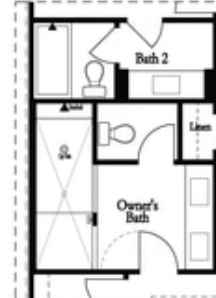
Call Us @ (470) 514-6999



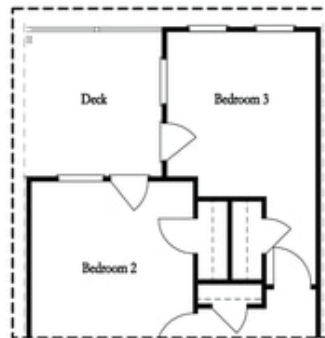
*Opt. Freestanding  
 Tub/Shower Combo*



*Opt. Decked  
 Tub/Shower Combo*



*Opt. Walk-Through Shower*



*Opt. Bedroom 3  
 \*Only Available with Sunroom option  
 \*Laundry Moved to Main Level w/ this Opt.*

Upper Level Options

**Want to Know More  
 About This Home?**

CONTACT OUR NEW HOME NAVIGATOR

**NONE**

Call Us @ (470) 514-6999