



PRICED AT
\$676,585

 2201 Sq Ft

 3 Beds

 2.5 Baths

 2 Car Garage

 3.0 Story

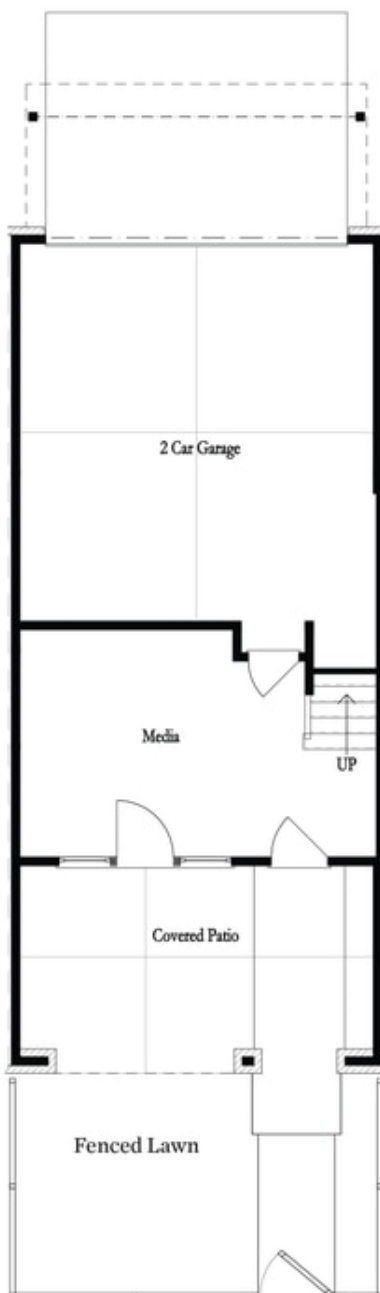
Such an inviting floor plan! Bright, END UNIT townhome offers 3 bedrooms all on one level, a wonderful media room and a lovely sunroom plus 2 decks and a covered patio with fireplace that is great for any season. The beautifully designed kitchen has views to dining and family room. Family room fireplace is wrapped with painted brick from floor to ceiling and has a box beam mantle. The owners bedroom has hardwood floors and a spa like bath. All of this is located in a Gated Master Planned Community is backing up to the Chattahoochee River. Enjoy walks down by the river along with our amenities: clubhouse with fitness center, swimming pool with pool deck, fire pit areas, and green lawn spaces. You are 1 mile from the Forum in the heart of Peachtree Corners. This community has single-family & townhomes. Home photos do not represent actual property. The home is currently under construction. For driving directions, you can use 4411 E. Jones Bridge Road, Peachtree Corners, GA 30092.

**Want to Know More
About This Home?**

CONTACT OUR NEW HOME NAVIGATOR

NONE

Call Us @ (470) 514-6999

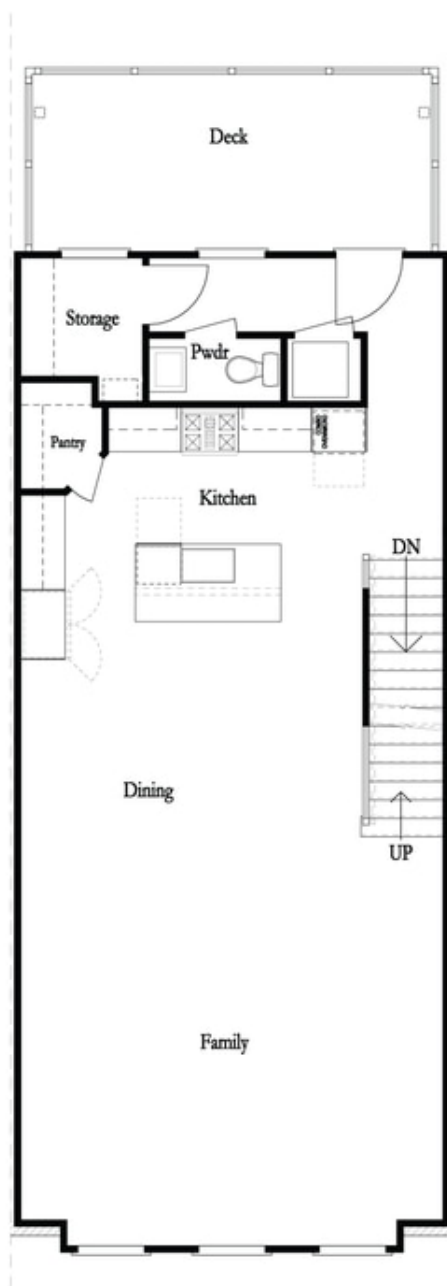


Want to Know More
About This Home?

CONTACT OUR NEW HOME NAVIGATOR

NONE

Call Us @ (470) 514-6999

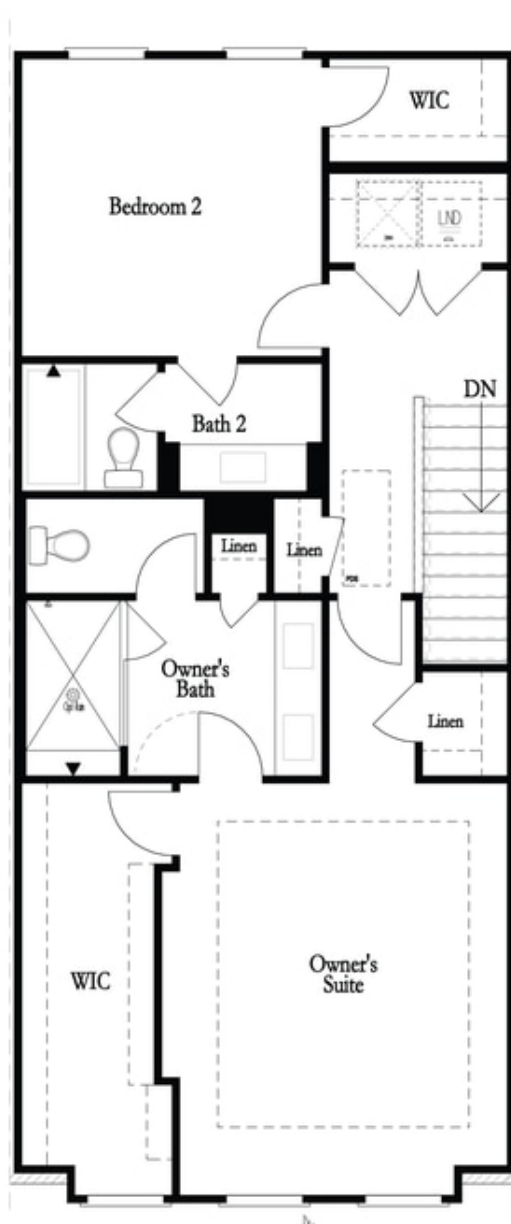


**Want to Know More
About This Home?**

CONTACT OUR NEW HOME NAVIGATOR

NONE

Call Us @ (470) 514-6999

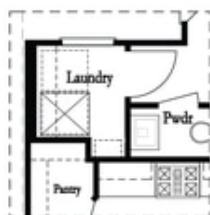
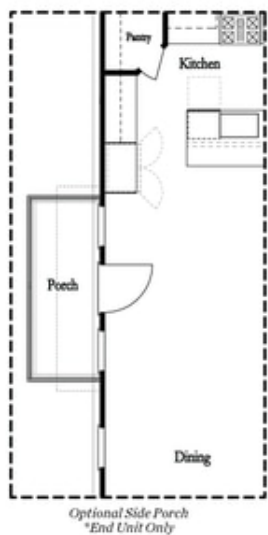


**Want to Know More
About This Home?**

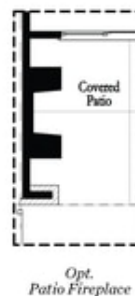
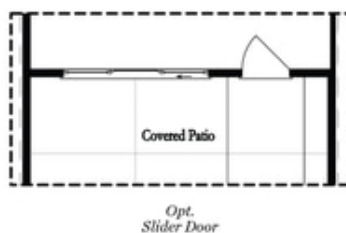
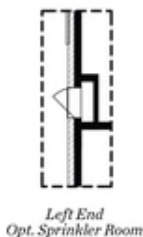
CONTACT OUR NEW HOME NAVIGATOR

NONE

Call Us @ (470) 514-6999



Main Level Options



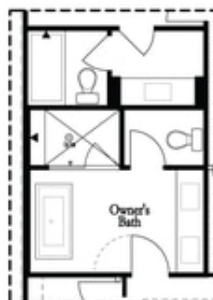
Terrace Level Options

Want to Know More
About This Home?

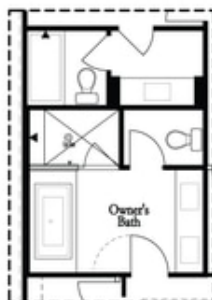
CONTACT OUR NEW HOME NAVIGATOR

NONE

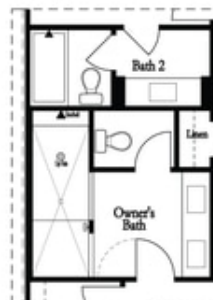
Call Us @ (470) 514-6999



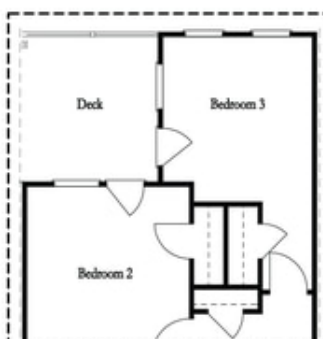
*Opt. Freestanding
Tub/Shower Combo*



*Opt. Decked
Tub/Shower Combo*



Opt. Walk-Through Shower



*Opt. Bedroom 3
*Only Available with Sunroom option
Laundry Moved to Main Level w/ this Opt.

Upper Level Options

**Want to Know More
About This Home?**

CONTACT OUR NEW HOME NAVIGATOR

NONE

Call Us @ (470) 514-6999