



PRICED AT
\$528,650

 1862 Sq Ft

 2 Beds

 2.0 Baths

 1 Car Garage

 1.0 Story

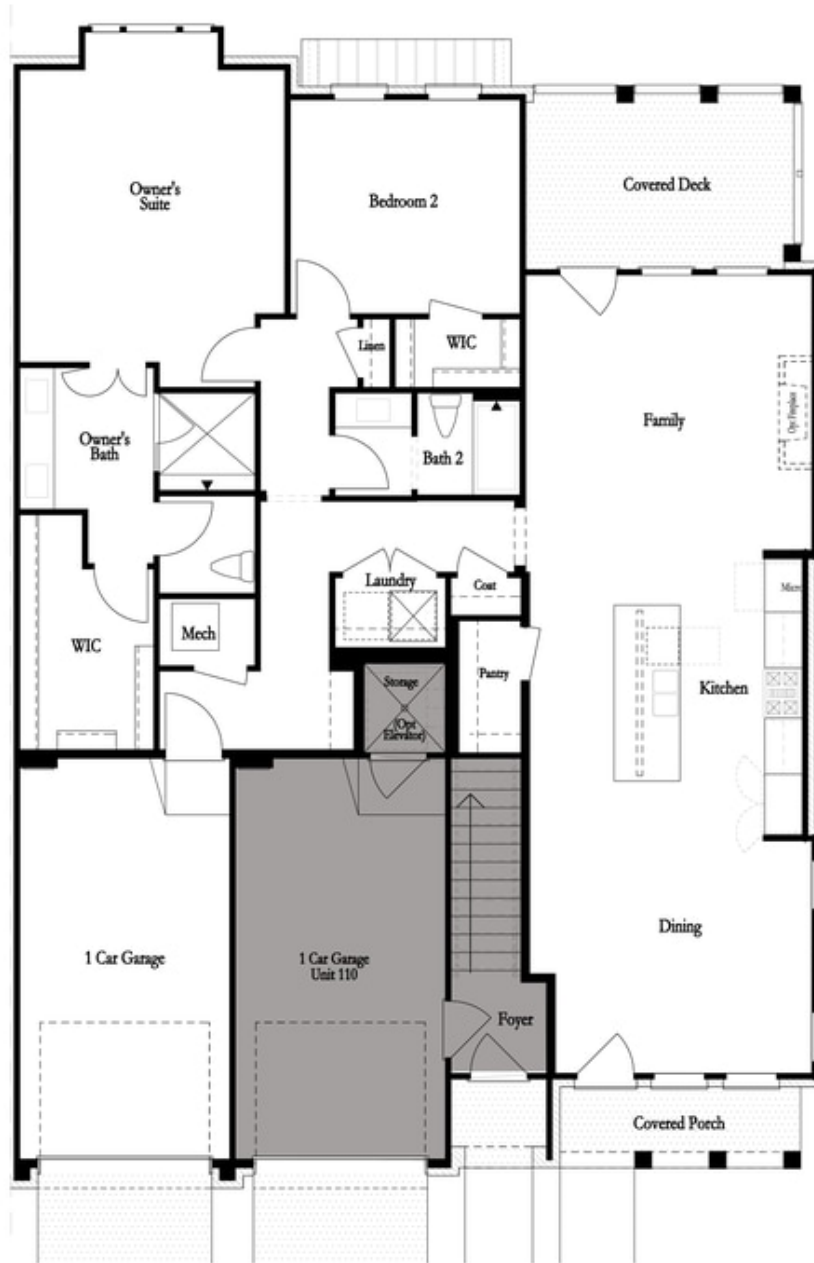
Elevate your life in 2023 with a new home by The Providence Group and \$5,000 towards closing cost when financing with one of Seller's 4 preferred lenders. Location and Style are waiting for you in this 2-bedroom Unit Condo along the Chattahoochee River! **RARE ONE-LEVEL LIVING!** Welcome to The Baldwin Floorplan brought to you by The Providence Group. Open the door to a spacious living room w/fireplace, large kitchen w/entertaining island and dining area. The Owner's Suite is quite roomy and Owner's Bathroom features an oversized shower, double sinks and walk-in closet. Covered balcony on the back to enjoy some outdoor relaxation. Come check out this great way to live! The Baldwin is located in a New Gated Master Planned Community, surrounded by beautiful trees! Only one mile from the Forum and right beside E Jones Bridge Park. Amenities w/Swim, fitness, parks, clubhouse, pickle ball courts, walking trails by the Chattahoochee River etc. Photos do not represent the actual home. For driving directions, you can use 4411 E. Jones Bridge Road, Peachtree Corners, GA 30092.

**Want to Know More
About This Home?**

CONTACT OUR NEW HOME NAVIGATOR

NONE

Call Us @ (470) 514-6999



**Want to Know More
About This Home?**

CONTACT OUR NEW HOME NAVIGATOR

NONE

Call Us @ (470) 514-6999



**Want to Know More
About This Home?**

CONTACT OUR NEW HOME NAVIGATOR

NONE

Call Us @ (470) 514-6999