



PRICED AT  
**\$623,220**

 2520 Sq Ft

 3 Beds

 2.0 Baths

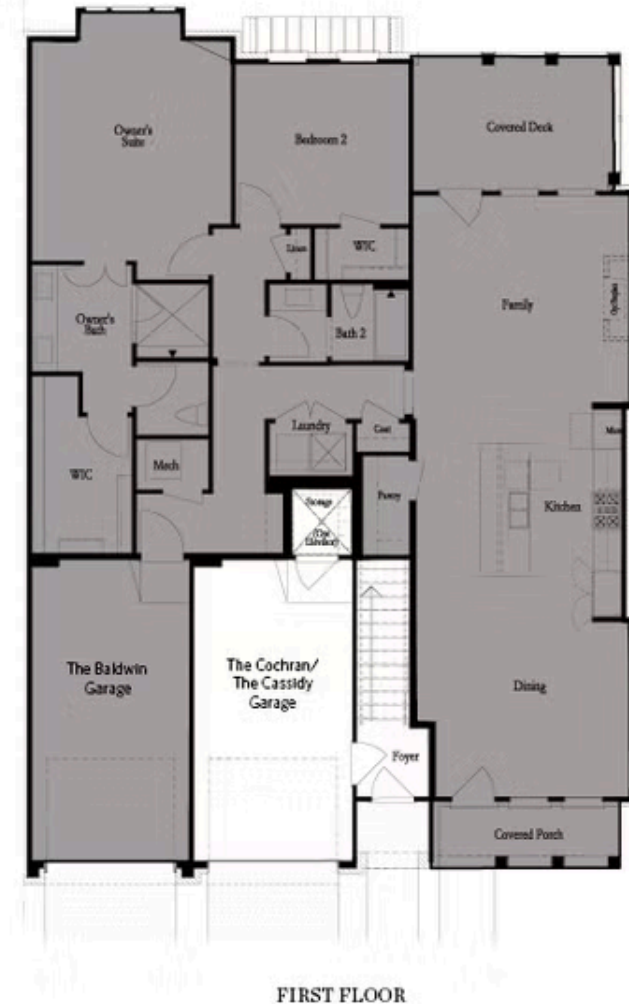
 1 Car Garage

 1.0 Story

Elevate your life in 2023 with a new home by The Providence Group and \$5,000 towards closing cost when financing with one of Seller's 4 preferred lenders. You really have to see this home, one of the best floor plans. lives like a single family home. Being an end unit, you will have extra windows in the dining and family room making your home gleam with natural light. The family room has a cozy fireplace with vertical shiplap surround and the Dining room is large enough for hosting dinner parties. The Huge owners suite with a sitting area leads to a covered porch, perfect for reading or a cup of coffee and the owner bath has an oversized shower, dual vanity, separate tub and massive closet. Secondary bedrooms are a great size and have walk-in closets. All of this backing up to the Chattahoochee River! Our clubhouse and pool house are under construction now. Green lawn spaces with fire pit areas, walking trails down by the river with benches, 4 pickleball courts, manned gatehouse coming soon. The Forum is one mile from the neighborhood. You can shop, eat and drink at the Forum. Photos do not represent the actual home. ...

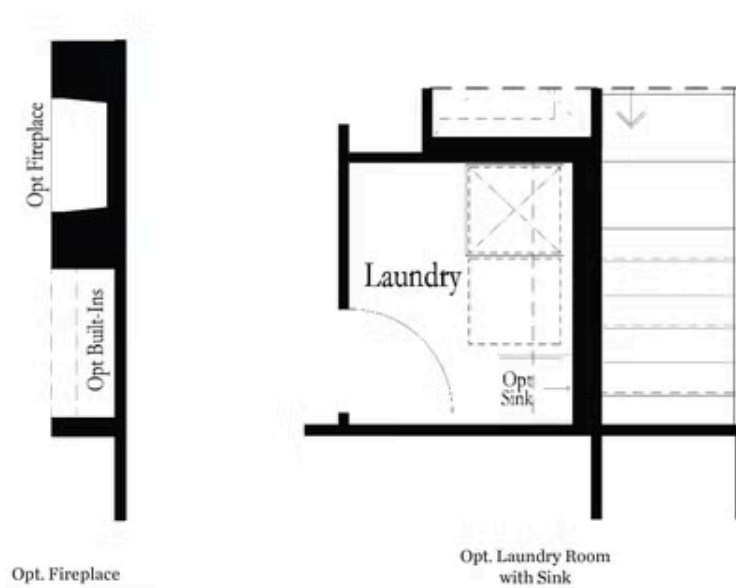
**Want to Know More  
About This Home?**

CONTACT OUR COMMUNITY SALES MANAGER  
Call Us @ 470.514.6999



Want to Know More  
About This Home?

CONTACT OUR COMMUNITY SALES MANAGER  
Call Us @ 470.514.6999



Want to Know More  
About This Home?

CONTACT OUR COMMUNITY SALES MANAGER  
Call Us @ 470.514.6999



SECOND FLOOR - LEFT END UNIT

Want to Know More  
About This Home?

CONTACT OUR COMMUNITY SALES MANAGER  
Call Us @ 470.514.6999



SECOND FLOOR - RIGHT END UNIT

Want to Know More  
About This Home?

CONTACT OUR COMMUNITY SALES MANAGER  
Call Us @ 470.514.6999