








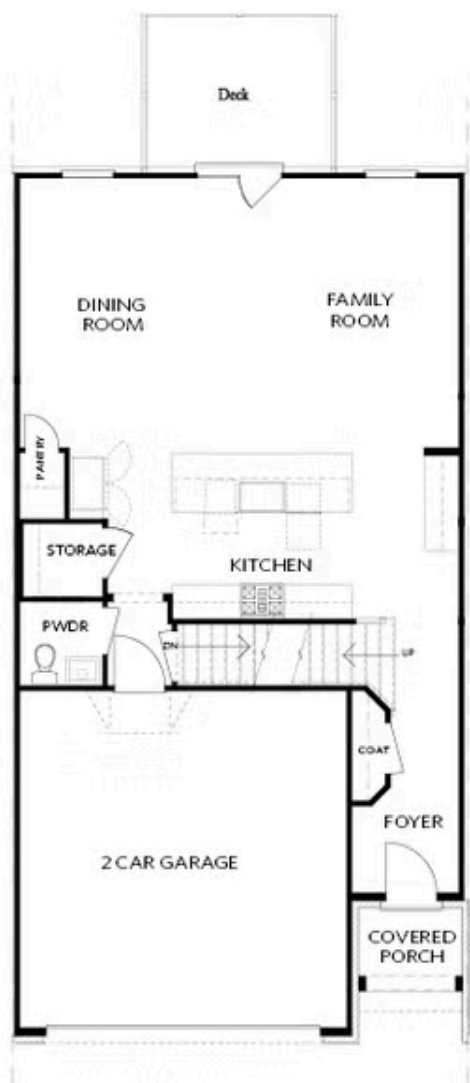
PRICED AT
\$663,185

-  2233 Sq Ft
-  3 Beds
-  2.5 Baths
-  2 Car Garage
-  2.0 Story

Elevate your life in 2023 with a new home by The Providence Group and \$5,000 towards closing cost when financing with one of Seller's preferred lenders. Waterside is the newest community in Peachtree Corners! The Ellington is a Two-story Townhome with a fenced backyard and elevator shaft! Relax in the soaking tub in the owner's suite and fall in love with this spacious owner's closet! Cambria Quartz countertops in the kitchen, Huge sliding glass door leading to your fenced back yard. Hardwood floors throughout the main level plus the owner's bedroom. Located one minute from the entertainment at The Forum. Feel free to drive, walk, bike or run to restaurants, shopping, breweries, movies, and festivals. Waterside is nestled around the Chattahoochee River. We will have trails all along the river, the perfect spot to get away from the hustle and bustle! Then stop by the overlook, grab a cocktail and enjoy the serene atmosphere. If your ready for a little exercise, there will be a fitness center inside the elegant clubhouse. Rather exercise outdoors, grab a paddle and pick up a pickleball game. We will have 4 courts for you to enjoy. Take a dive in the pool or hang ...

**Want to Know More
About This Home?**

CONTACT OUR COMMUNITY SALES MANAGER
Call Us @ 470.514.6999

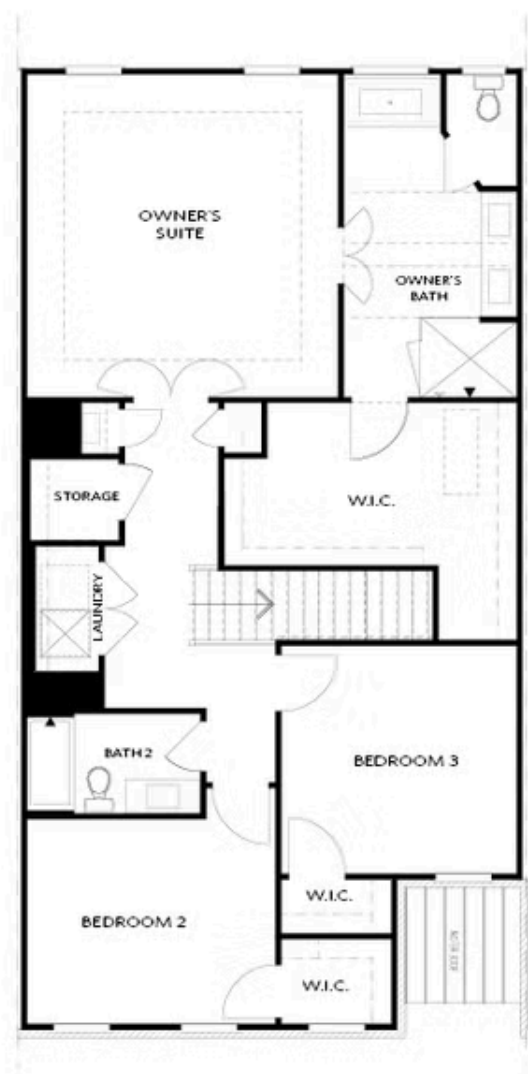


FIRST FLOOR

Elevation C, I, K

Want to Know More
About This Home?

CONTACT OUR COMMUNITY SALES MANAGER
Call Us @ 470.514.6999

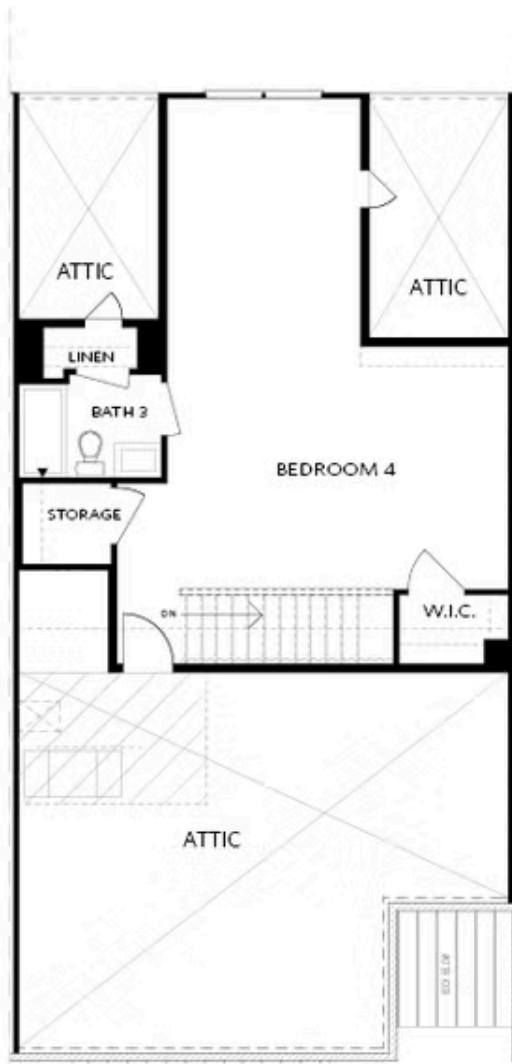


SECOND FLOOR

Elevation C, I, K

Want to Know More
About This Home?

CONTACT OUR COMMUNITY SALES MANAGER
Call Us @ 470.514.6999

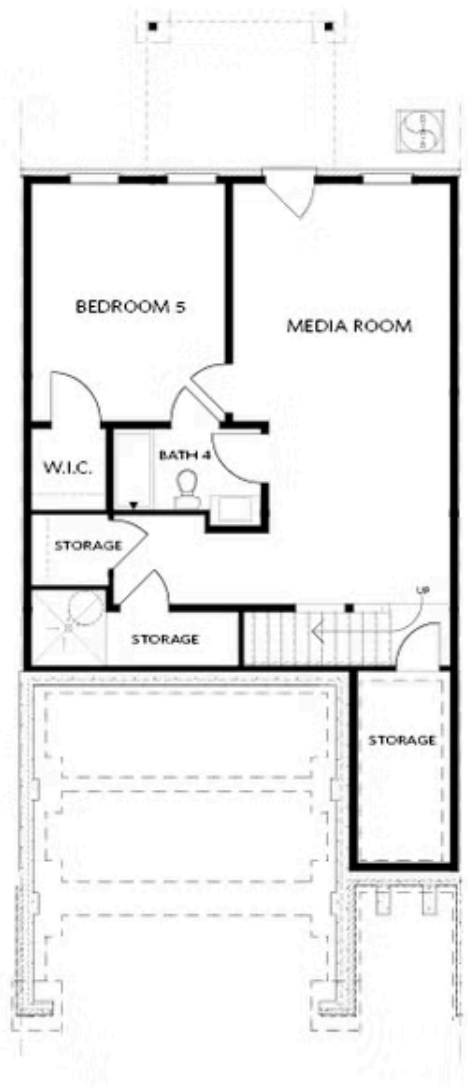


THIRD FLOOR

Elevation C, I, K

Want to Know More
About This Home?

CONTACT OUR COMMUNITY SALES MANAGER
Call Us @ 470.514.6999

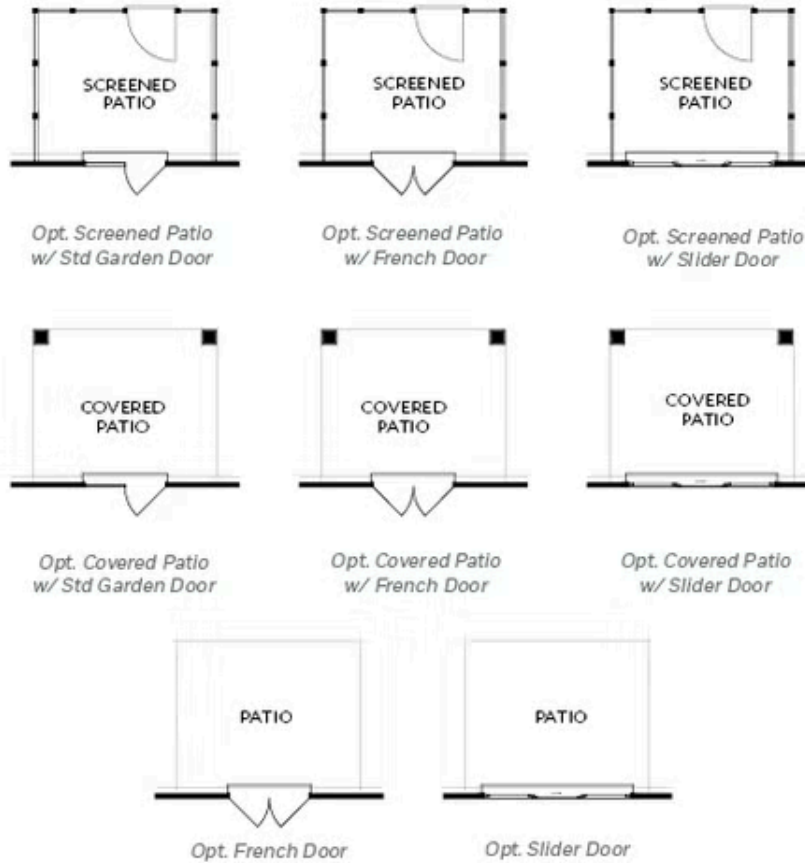


BASEMENT

Elevation C, I, K

Want to Know More
About This Home?

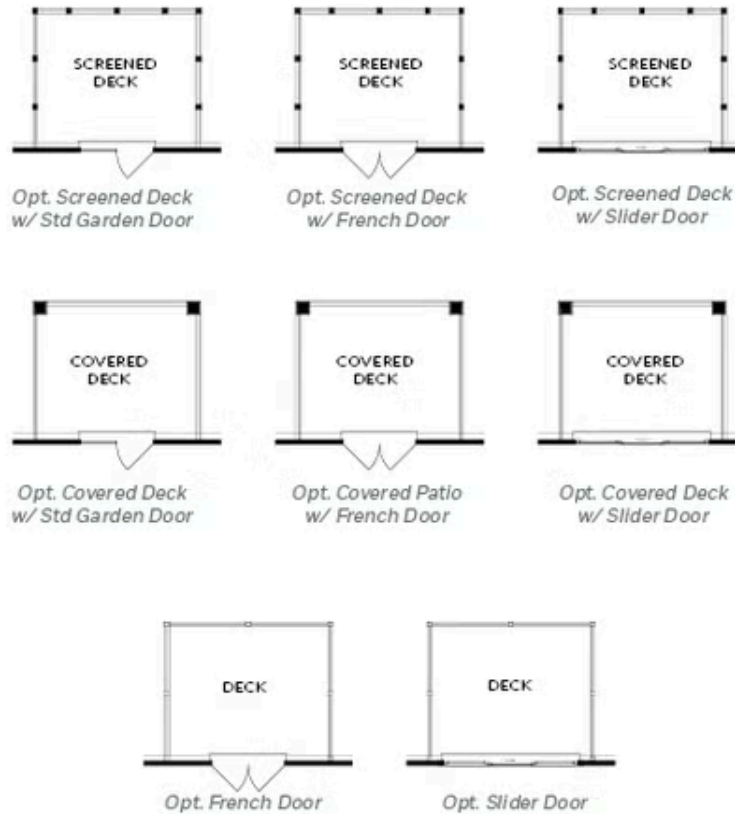
CONTACT OUR COMMUNITY SALES MANAGER
Call Us @ 470.514.6999



FIRST FLOOR
PATIO OPTIONS
ON A SLAB

Want to Know More
About This Home?

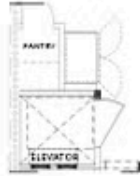
CONTACT OUR COMMUNITY SALES MANAGER
Call Us @ 470.514.6999



FIRST FLOOR
DECK OPTIONS
ON A BASEMENT

Want to Know More
About This Home?

CONTACT OUR COMMUNITY SALES MANAGER
Call Us @ 470.514.6999



Opt. Elevator
First Floor



Opt. Fireplace



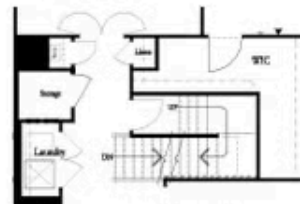
Opt. Linear Fireplace



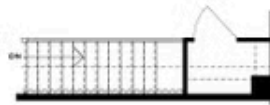
Owner's Suite & Bath
*No Trey or Vaulted Ceilings w/ 3rd Floor



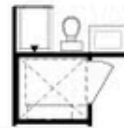
Opt. Elevator
Second Floor



2nd Floor Stairs to 3rd Floor



Opt. Open Rail on 3rd Floor



Opt. Elevator
Third Floor

OPTIONS ON A SLAB WITH 3RD FLOOR

Want to Know More
About This Home?

CONTACT OUR COMMUNITY SALES MANAGER
Call Us @ 470.514.6999



Opt. Shower



Opt. Wet Bar



*Opt. Elevator
Basement*



*Opt. Elevator
First Floor*



Opt. Fireplace



Opt. Linear Fireplace



*Opt. Elevator
Second Floor*

OPTIONS ON A BASEMENT

Want to Know More
About This Home?

CONTACT OUR COMMUNITY SALES MANAGER
Call Us @ 470.514.6999