



PRICED AT
\$541,490

 1862 Sq Ft

 2 Beds

 2.0 Baths

 1 Car Garage

 1.0 Story

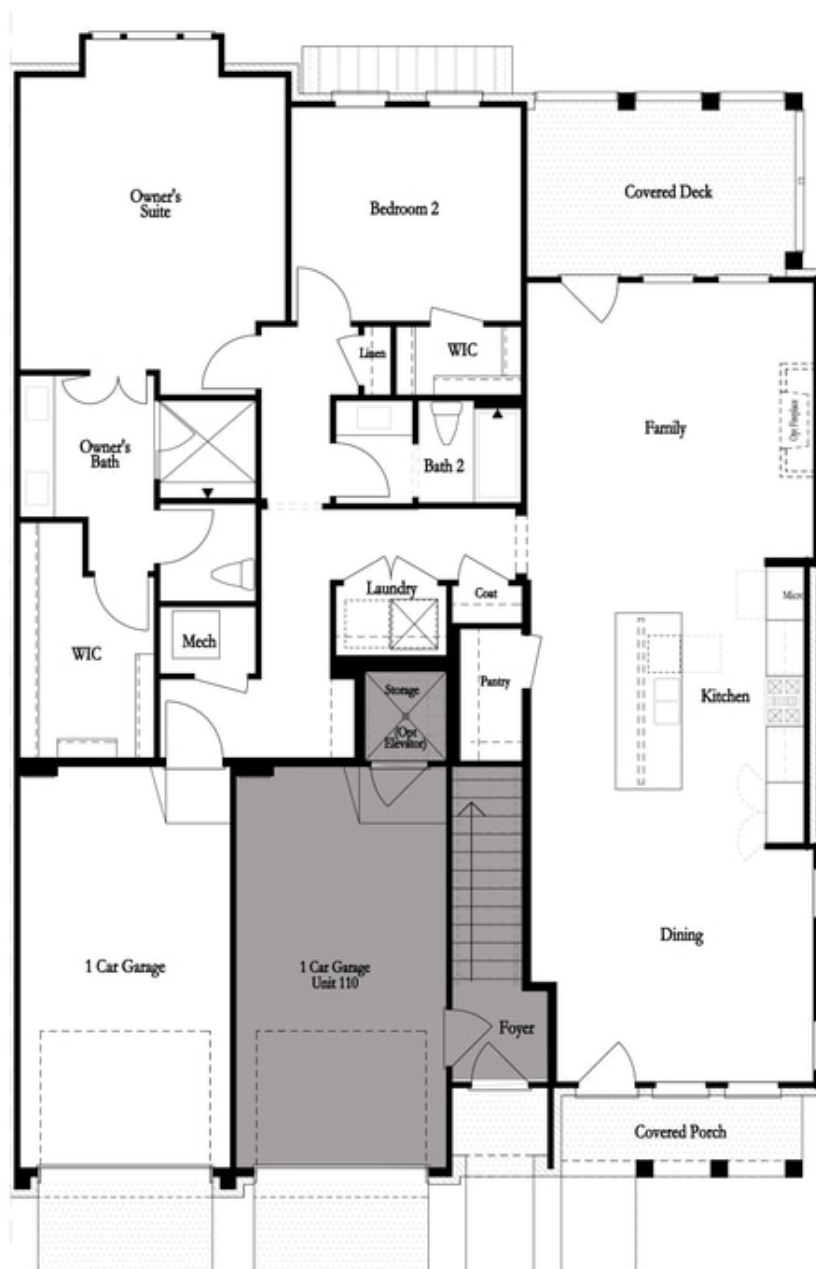
Location and Style are waiting for you in this 2-bedroom End Unit Condo along the Chattahoochee River! **RARE ONE-LEVEL LIVING!** Welcome to The Baldwin Floorplan brought to you by The Providence Group. Open the door to a spacious living room w/fireplace, large kitchen w/entertaining island and dining area. The kitchen features white cabinets at the perimeter and a slate stained island, a tiled backsplash with a herringbone pattern & beautiful Cambria countertops. The master suite is quite roomy and the master bath features an oversized shower, double sinks and walk in closet. Covered balcony on the back to enjoy some outdoor relaxation. Come check out this great way to live! The Baldwin is located in a New Gated Master Planned Community, surrounded by beautiful trees! Only one mile from the Forum and right beside E Jones Bridge Park. Amenities w/Swim, fitness, parks, clubhouse, pickle ball courts, walking trails by the Chattahoochee River etc. Photos do not represent the actual home. For driving directions, you can use 4411 E. Jones Bridge Road, Peachtree Corners, GA 30092.

**Want to Know More
About This Home?**

CONTACT OUR NEW HOME NAVIGATOR

NONE

Call Us @ (470) 514-6999



**Want to Know More
About This Home?**

CONTACT OUR NEW HOME NAVIGATOR

NONE

Call Us @ (470) 514-6999



Want to Know More
About This Home?

CONTACT OUR NEW HOME NAVIGATOR

NONE

Call Us @ (470) 514-6999