



PRICED AT
\$633,990

 2520 Sq Ft

 3 Beds

 2.0 Baths

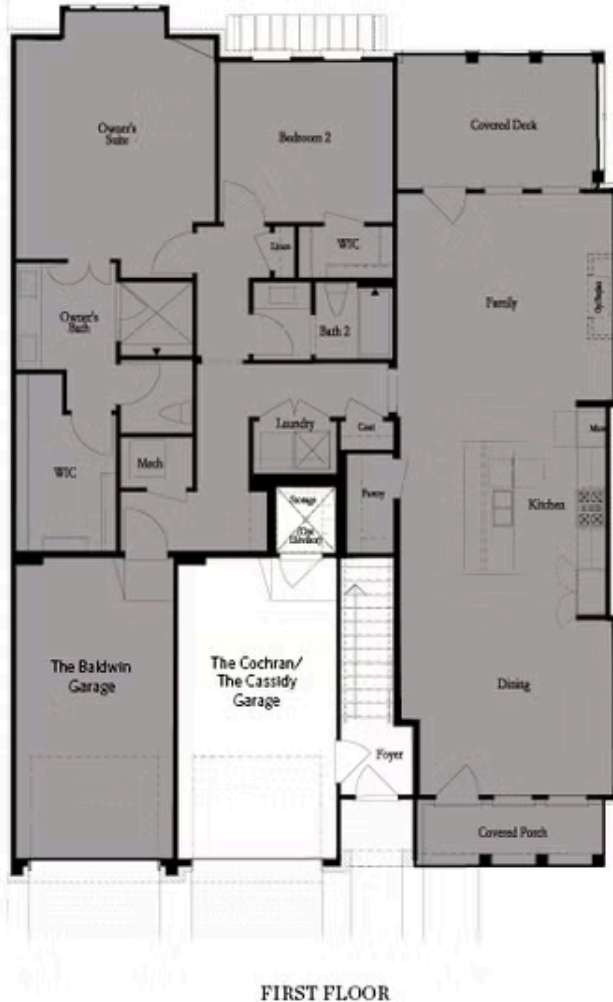
 1 Car Garage

 1.0 Story

RARE, QUICK-MOVE IN HOME! Elevate your life in 2023 with a new home by The Providence Group and \$5,000 towards closing cost when financing with one of Seller's 4 preferred lenders. Location and Style are waiting for you at Waterside in this 3-bedroom MASSIVE Condo along the Chattahoochee River! 2520 SQ FT on ONE LEVEL! Welcome to The Cochran Floorplan brought to you by The Providence Group. Limited Availability, these will not last!! One staircase to get to your individual unit OR personal elevator inside garage. Open the door to a spacious living room w/fireplace, large kitchen w/entertaining island and dining area. Oversized Owner's Suite accompanied by Owner's Bathroom with Freestanding Tub, Huge Frameless Shower, His & Hers Separate Walk-In Closets! Covered porch on the back to enjoy outdoor relaxation. Come check out this great way to live! The Cochran is located in a New Gated Master Planned Community, surrounded by beautiful trees! Only one mile from the Forum and right beside E Jones Bridge Park. Amenities w/Swim, fitness, parks, clubhouse, pickle ball courts, walking trails by the Chattahoochee River etc. Photos do not represent the actual home. For driving directions, you can use 4411 E. Jones Bridge Road, Peachtree ...

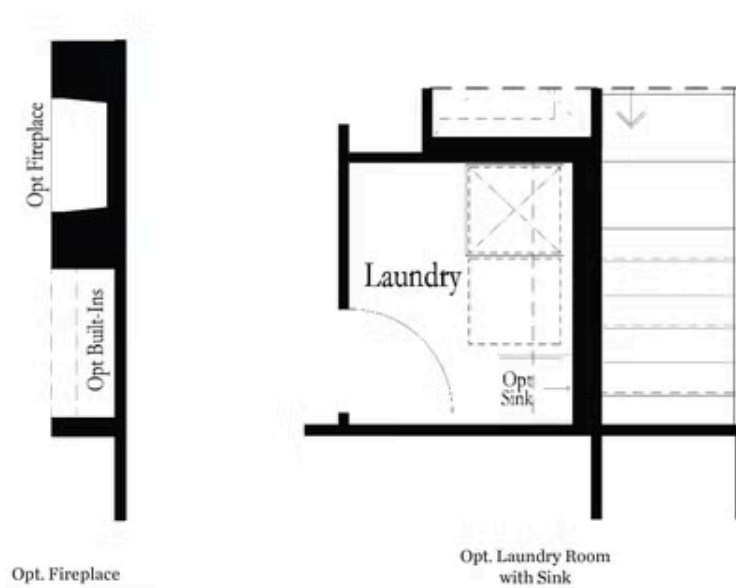
**Want to Know More
About This Home?**

CONTACT OUR COMMUNITY SALES MANAGER
Call Us @ 470.514.6999



Want to Know More
About This Home?

CONTACT OUR COMMUNITY SALES MANAGER
Call Us @ 470.514.6999



Want to Know More
About This Home?

CONTACT OUR COMMUNITY SALES MANAGER
Call Us @ 470.514.6999



SECOND FLOOR - LEFT END UNIT

Want to Know More
About This Home?

CONTACT OUR COMMUNITY SALES MANAGER
Call Us @ 470.514.6999



SECOND FLOOR - RIGHT END UNIT

Want to Know More
About This Home?

CONTACT OUR COMMUNITY SALES MANAGER
Call Us @ 470.514.6999