



PRICED AT
\$643,991

 2520 Sq Ft

 3 Beds

 2.0 Baths

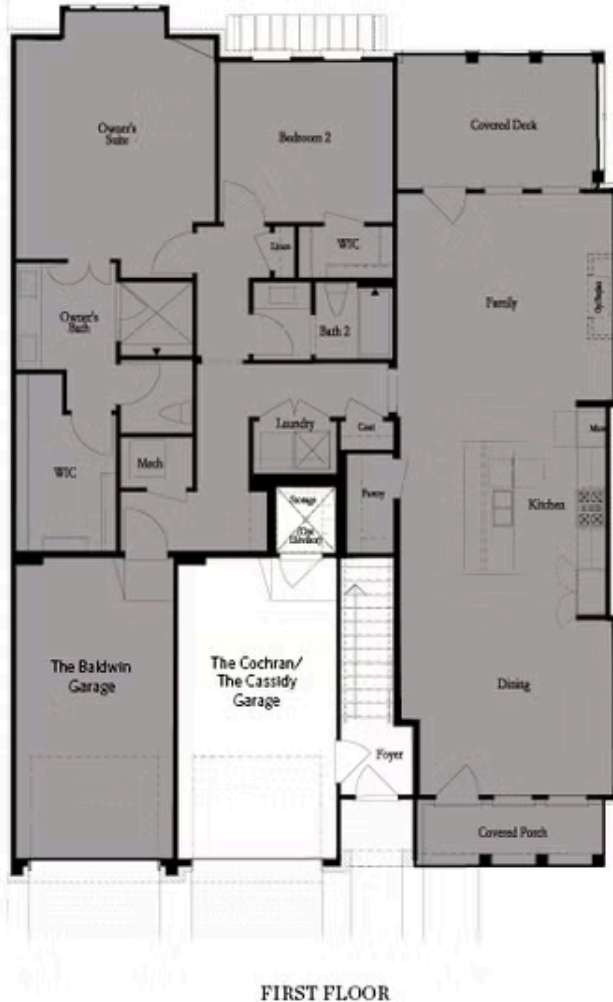
 1 Car Garage

 1.0 Story

Elevate your life in 2023 with a new home by The Providence Group and \$5,000 towards closing cost when financing with one of our preferred lenders. End unit!! You will love the extra windows in the dining and family room making your home gleam with natural light. You really have to see this home, feels like a penthouse being on the top floor and all one level living. Huge master with a sitting area that leads to a covered porch, perfect for reading or a cup of coffee. Oversized shower and spacious closet. Roomy secondary bedrooms both have walk-in closets. No lack of extra storage. Beautiful fireplace in Family Room overlooks lovely kitchen with stainless appliances, Cambria quartz counter tops, and soft close drawers/doors. Waterside is nestled up to the Chattahoochee River! Exquisite clubhouse with fitness center, full kitchen and banquet room! In addition, Resort like pool are under construction expected to be completed this fall. Green lawn spaces with fire pit areas, walking trails down by the river, pickle ball courts, and gated community. All the entertainment at The Forum is ~ 1 mile from the neighborhood with shopping, restaurants, movies at the Forum and Park Peachtree Corners Town ...

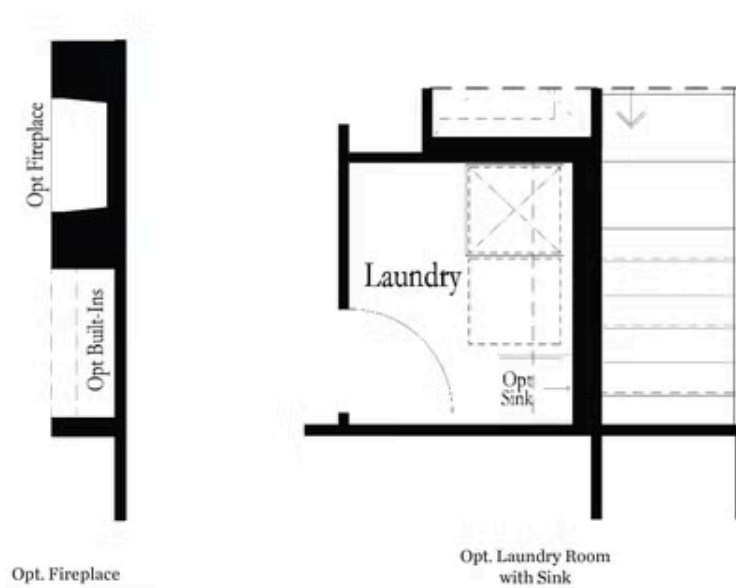
**Want to Know More
About This Home?**

CONTACT OUR COMMUNITY SALES MANAGER
Call Us @ 470.514.6999



Want to Know More
About This Home?

CONTACT OUR COMMUNITY SALES MANAGER
Call Us @ 470.514.6999



Want to Know More
About This Home?

CONTACT OUR COMMUNITY SALES MANAGER
Call Us @ 470.514.6999



SECOND FLOOR - LEFT END UNIT

Want to Know More
About This Home?

CONTACT OUR COMMUNITY SALES MANAGER
Call Us @ 470.514.6999



SECOND FLOOR - RIGHT END UNIT

Want to Know More
About This Home?

CONTACT OUR COMMUNITY SALES MANAGER
Call Us @ 470.514.6999