



PRICED AT  
**\$675,115**

 2233 Sq Ft

 3 Beds

 4.5 Baths

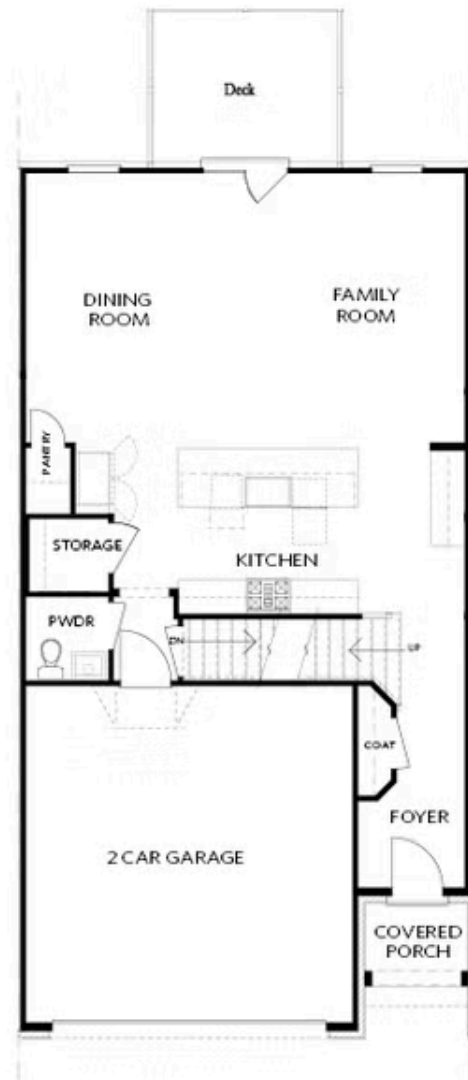
 2 Car Garage

 2.0 Story

NEW 2-STORY TOWNHOUSE with elevator capability! - Large Floorplan, abundant natural light gleams throughout the entire home. Hardwood floors throughout main level, floor to ceiling fireplace. Loaded with beautiful design upgrades, buyer can still go to Design Studio and pick their finishes! Oversized Master Bedroom, tub and shower in large Master bathroom. Huge closets! Two additional rooms, all bedrooms upstairs. Amazing location - Located minutes from The Forum. New Gated Master Planned Community is backing up to the Chattahoochee River, surrounded by beautiful, lush trees and the opportunity to take a walk down to the River or enjoy state of the art amenities w/Swim, fitness, parks, clubhouse, etc. Community w/single family & townhomes. State of the art amenity with Pool, Sun Deck with River view, three Great Lawns, Pickleball Courts, an Outdoor Bar, Pavillion and more! Pictures do not represent actual homesite. Completion for actual homesite late Spring 2023. For driving directions, you can use 4411 E. Jones Bridge Road, Peachtree Corners, GA 30092.

**Want to Know More  
About This Home?**

CONTACT OUR COMMUNITY SALES MANAGER  
Call Us @ 470.514.6999



FIRST FLOOR

Elevation C, I, K

Want to Know More  
About This Home?

CONTACT OUR COMMUNITY SALES MANAGER  
Call Us @ 470.514.6999

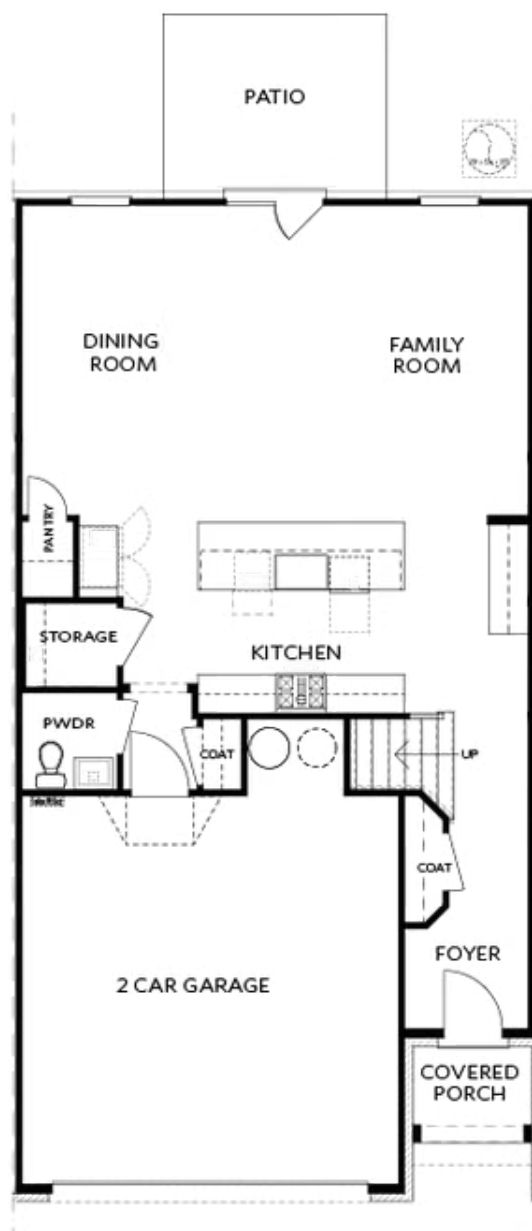


SECOND FLOOR

Elevation C, I, K

Want to Know More  
About This Home?

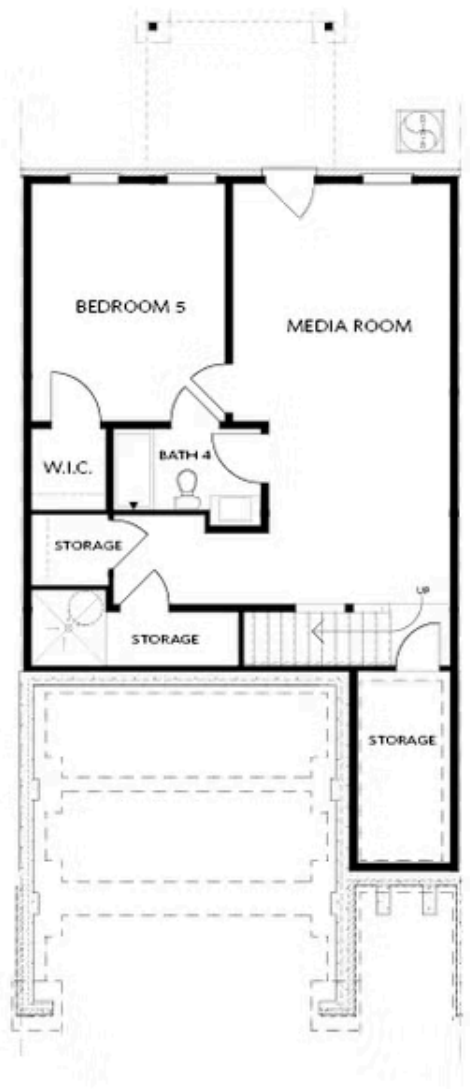
CONTACT OUR COMMUNITY SALES MANAGER  
Call Us @ 470.514.6999



Elevations C, I, K

Want to Know More  
About This Home?

CONTACT OUR COMMUNITY SALES MANAGER  
Call Us @ 470.514.6999

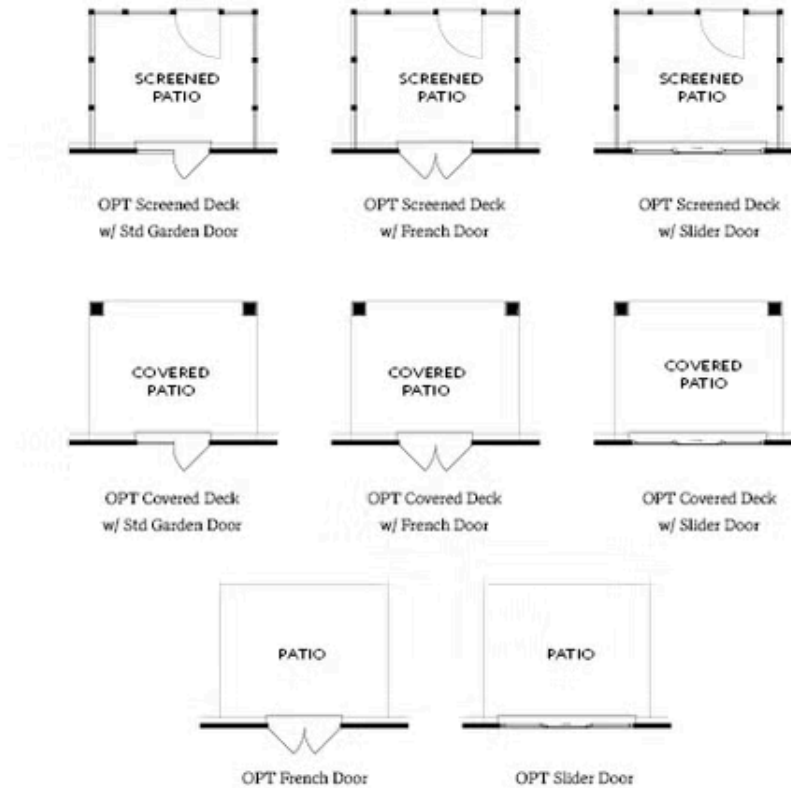


BASEMENT

Elevation C, I, K

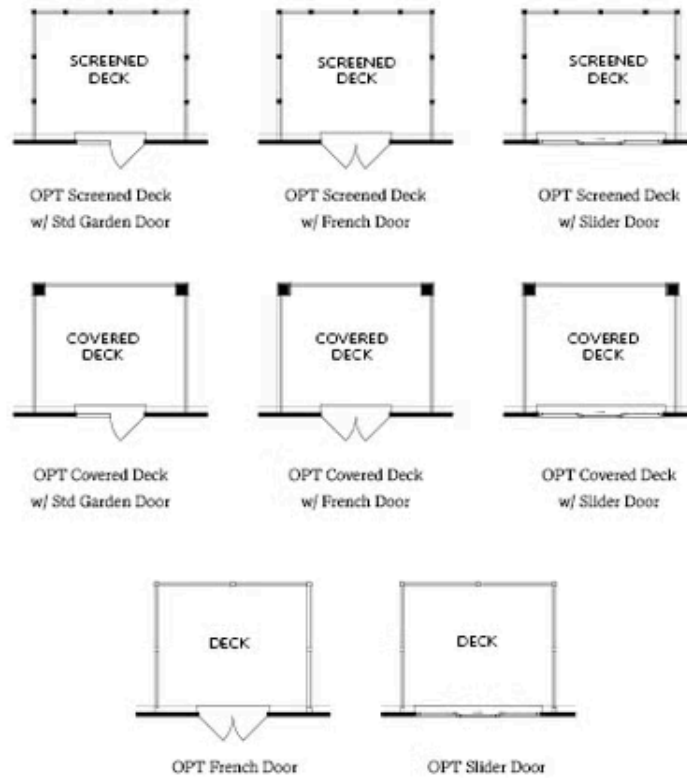
Want to Know More  
About This Home?

CONTACT OUR COMMUNITY SALES MANAGER  
Call Us @ 470.514.6999



Want to Know More  
About This Home?

CONTACT OUR COMMUNITY SALES MANAGER  
Call Us @ 470.514.6999

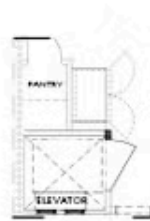


Want to Know More  
About This Home?

CONTACT OUR COMMUNITY SALES MANAGER  
Call Us @ 470.514.6999



OPT Elevator - Second Floor



OPT Elevator - First Floor



OPT Fireplace



OPT Linear Fireplace

Want to Know More  
About This Home?

CONTACT OUR COMMUNITY SALES MANAGER  
Call Us @ 470.514.6999





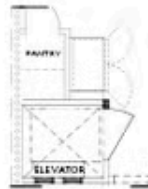
OPT Shower - Basement Bath



OPT Wet Bar - Basement



OPT Elevator - Basement



OPT Elevator - First Floor



OPT Fireplace



OPT Linear Fireplace



OPT Elevator - Second Floor

Want to Know More  
About This Home?

CONTACT OUR COMMUNITY SALES MANAGER  
Call Us @ 470.514.6999