



PRICED AT
\$675,115

 2233 Sq Ft

 3 Beds

 4.5 Baths

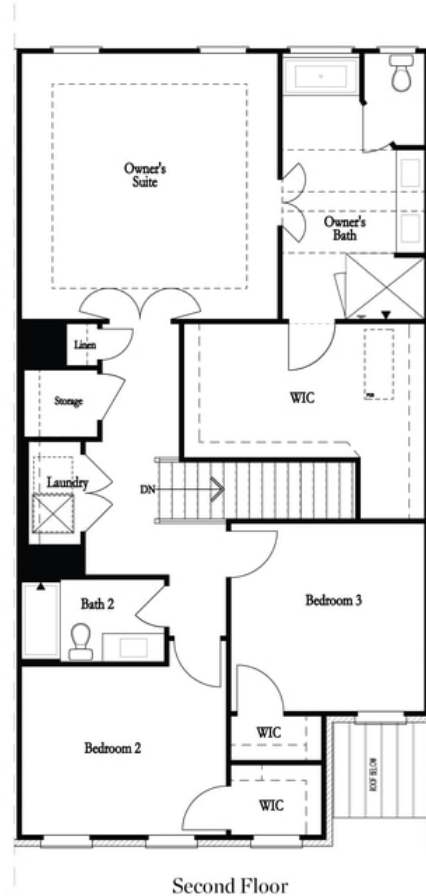
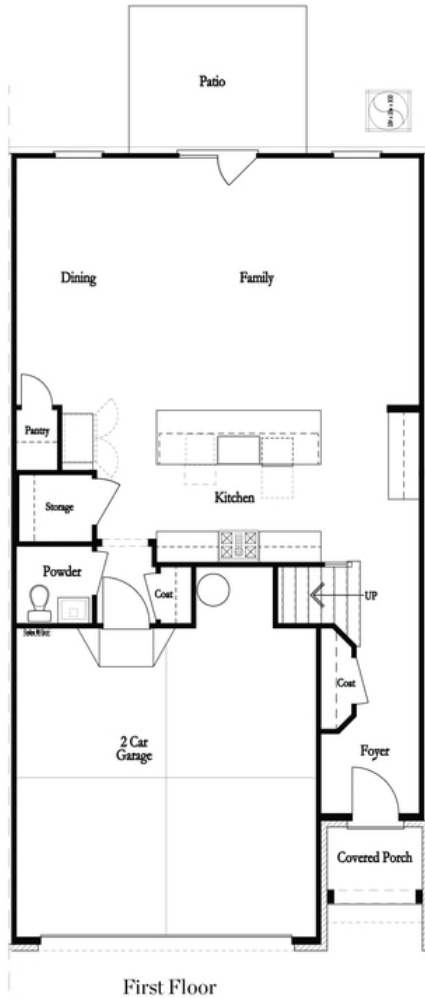
 2 Car Garage

 2.0 Story

NEW 2-STORY TOWNHOUSE with elevator capability! - Large Floorplan, abundant natural light gleams throughout the entire home. Hardwood floors throughout main level, floor to ceiling fireplace. Loaded with beautiful design upgrades, buyer can still go to Design Studio and pick their finishes! Oversized Master Bedroom, tub and shower in large Master bathroom. Huge closets! Two additional rooms, all bedrooms upstairs. Amazing location - Located minutes from The Forum. New Gated Master Planned Community is backing up to the Chattahoochee River, surrounded by beautiful, lush trees and the opportunity to take a walk down to the River or enjoy state of the art amenities w/Swim, fitness, parks, clubhouse, etc. Community w/single family & townhomes. State of the art amenity with Pool, Sun Deck with River view, three Great Lawns, Pickleball Courts, an Outdoor Bar, Pavillion and more! Pictures do not represent actual homesite. Completion for actual homesite late Spring 2023. For driving directions, you can use 4411 E. Jones Bridge Road, Peachtree Corners, GA 30092.

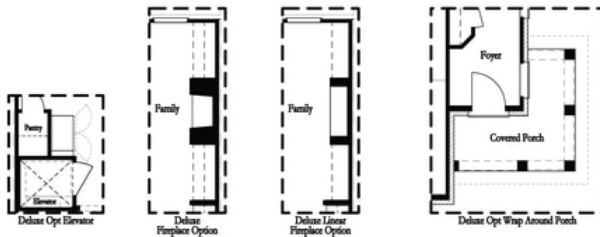
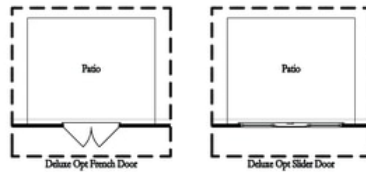
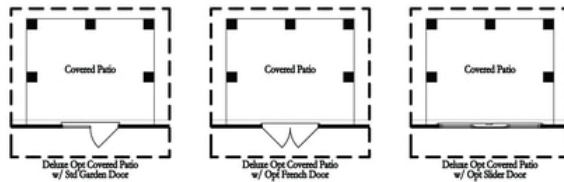
**Want to Know More
About This Home?**

CONTACT OUR NEW HOME NAVIGATOR
Call Us @ (470) 514-6999



**Want to Know More
 About This Home?**

CONTACT OUR NEW HOME NAVIGATOR
 Call Us @ (470) 514-6999



First Floor Options



Second Floor Options

Want to Know More
About This Home?

CONTACT OUR NEW HOME NAVIGATOR
Call Us @ (470) 514-6999