



PRICED AT
\$663,140

 2233 Sq Ft

 3 Beds

 2.5 Baths

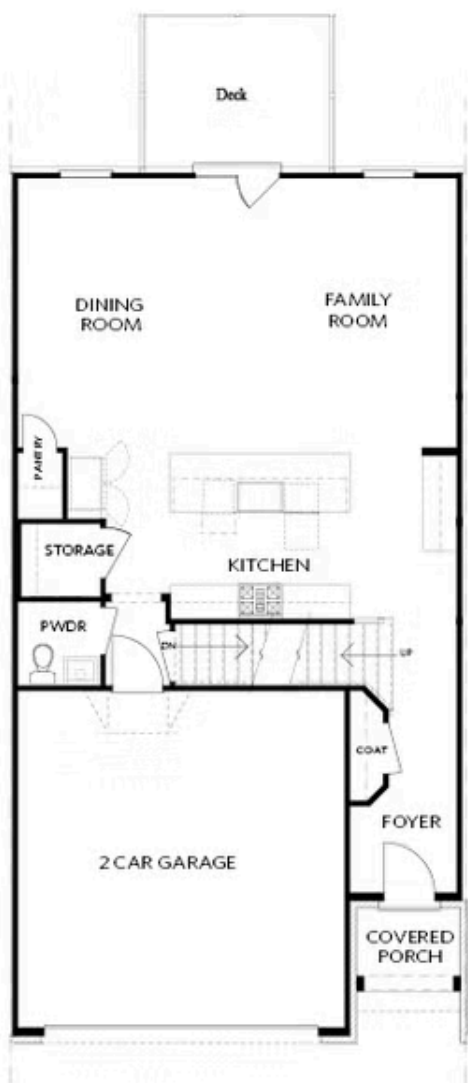
 2 Car Garage

 2.0 Story

Elevate your life in 2023 with a new home by The Providence Group and \$5,000 towards closing cost when financing with one of Seller's 4 preferred lenders. Open the DOOR! Linear fireplace in the family room with a stacked stone surround from floor to ceiling- Beautiful! Hardwood floors throughout the main level plus the owner's bedroom. Gourmet kitchen with GE Gas Cooktop, microwave/oven combo, dishwasher & a single bowl kitchen sink. All of your friends will be jealous over the kitchen island, it's over 10' long. Perfect spot for entertaining- just think how many charcuterie boards you could fit on this island. 9' ceilings on the main level with 8' doors. Having taller doors takes your home to a new level. 7 EXTRA windows for this end unit - natural light galore. Tired of stairs? No problem, built-in elevator shaft so you can add the elevator at any time! Not to mention, this home is located on a very nice lot, not really close to the next building beside it. This 2 story townhome also comes with a fenced backyard! All of this is located right off E Jones Bridge. The city has recently widened the sidewalk down E Jones ...

**Want to Know More
About This Home?**

CONTACT OUR COMMUNITY SALES MANAGER
Call Us @ 470.514.6999



FIRST FLOOR

Elevation C, I, K

Want to Know More
About This Home?

CONTACT OUR COMMUNITY SALES MANAGER
Call Us @ 470.514.6999

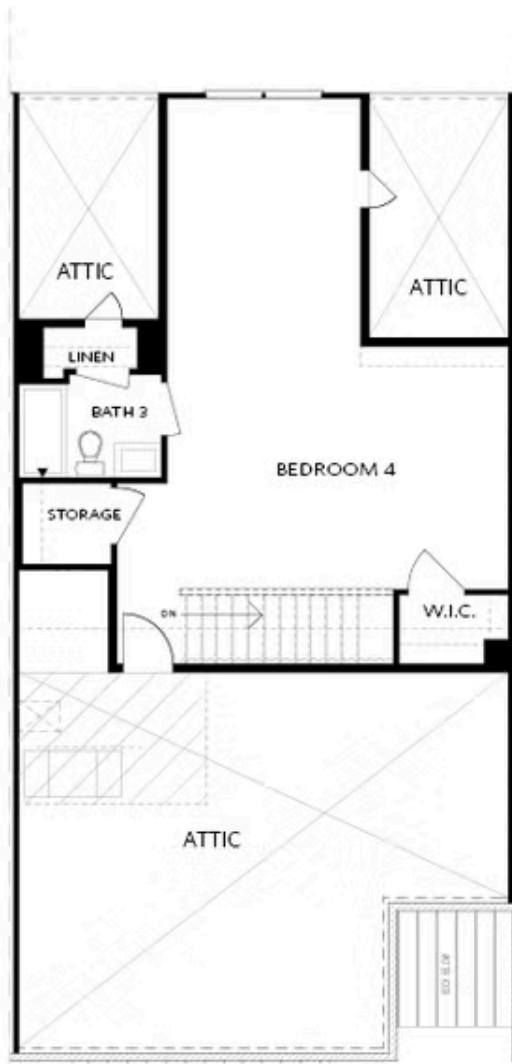


SECOND FLOOR

Elevation C, I, K

Want to Know More
About This Home?

CONTACT OUR COMMUNITY SALES MANAGER
Call Us @ 470.514.6999

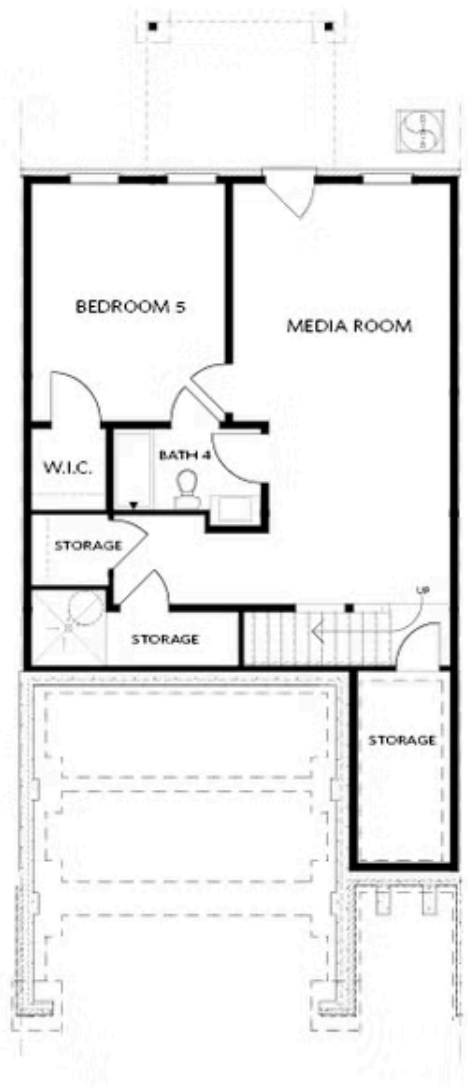


THIRD FLOOR

Elevation C, I, K

Want to Know More
About This Home?

CONTACT OUR COMMUNITY SALES MANAGER
Call Us @ 470.514.6999

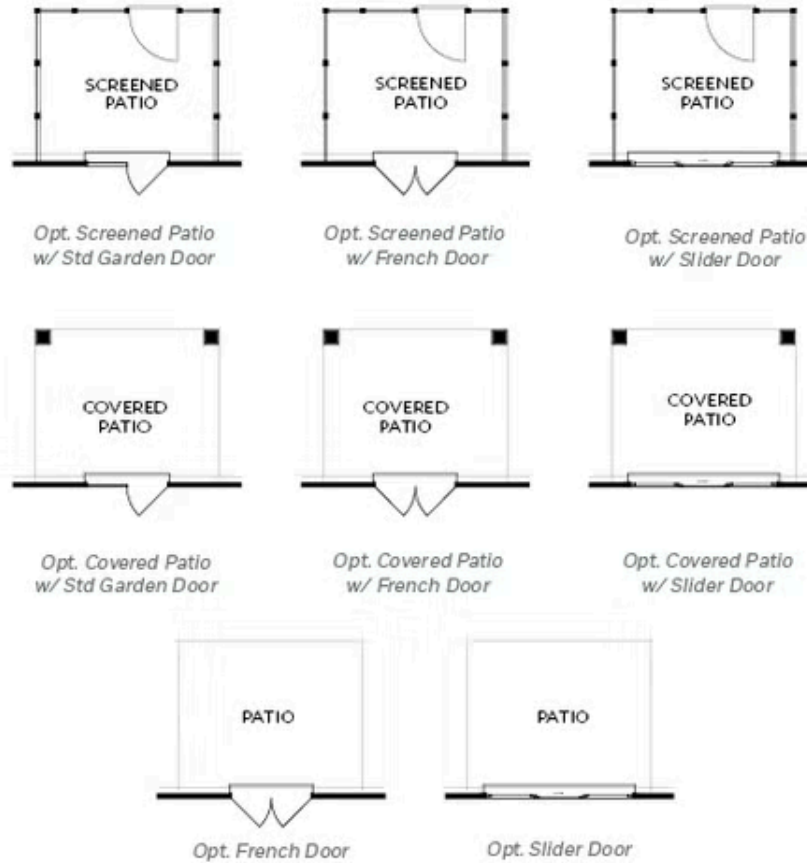


BASEMENT

Elevation C, I, K

Want to Know More
About This Home?

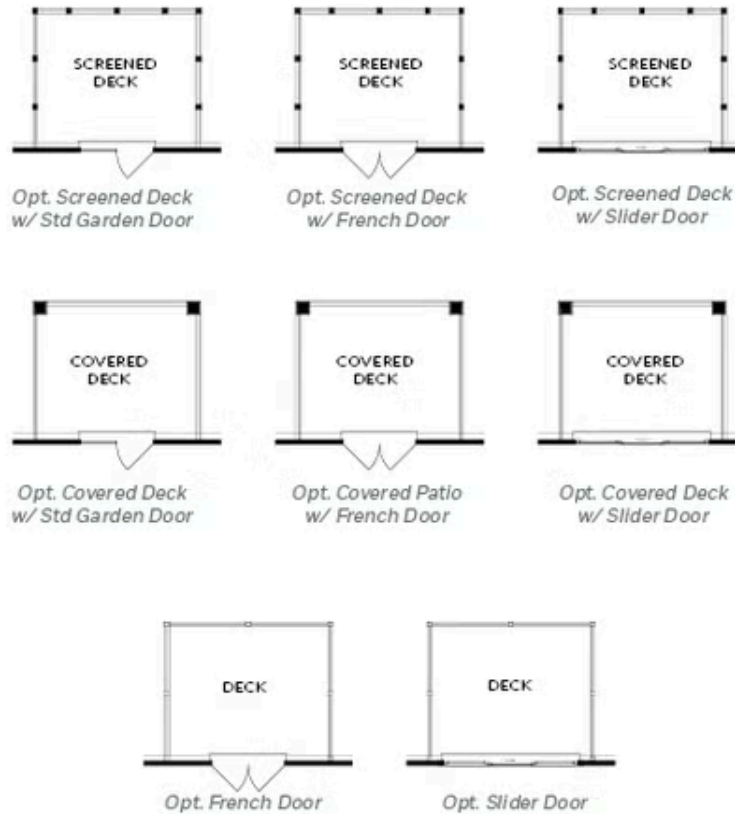
CONTACT OUR COMMUNITY SALES MANAGER
Call Us @ 470.514.6999



FIRST FLOOR
PATIO OPTIONS
ON A SLAB

Want to Know More
About This Home?

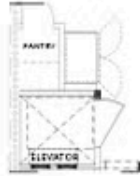
CONTACT OUR COMMUNITY SALES MANAGER
Call Us @ 470.514.6999



FIRST FLOOR
DECK OPTIONS
ON A BASEMENT

Want to Know More
About This Home?

CONTACT OUR COMMUNITY SALES MANAGER
Call Us @ 470.514.6999



Opt. Elevator
First Floor



Opt. Fireplace



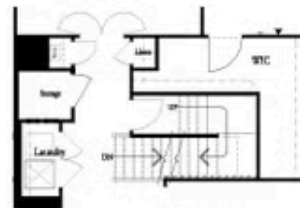
Opt. Linear Fireplace



Owner's Suite & Bath
*No Trey or Vaulted Ceilings w/ 3rd Floor



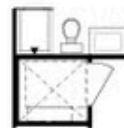
Opt. Elevator
Second Floor



2nd Floor Stairs to 3rd Floor



Opt. Open Rail on 3rd Floor



Opt. Elevator
Third Floor

OPTIONS ON A SLAB WITH 3RD FLOOR

Want to Know More
About This Home?

CONTACT OUR COMMUNITY SALES MANAGER
Call Us @ 470.514.6999



Opt. Shower



Opt. Wet Bar



*Opt. Elevator
Basement*



*Opt. Elevator
First Floor*



Opt. Fireplace



Opt. Linear Fireplace



*Opt. Elevator
Second Floor*

OPTIONS ON A BASEMENT

Want to Know More
About This Home?

CONTACT OUR COMMUNITY SALES MANAGER
Call Us @ 470.514.6999