



PRICED AT
\$646,590

 2233 Sq Ft

 3 Beds

 2.5 Baths

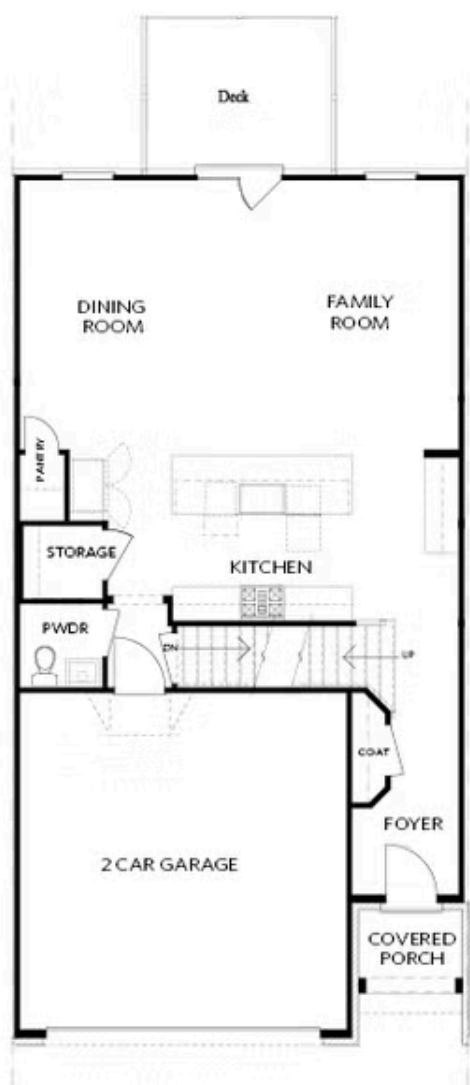
 2 Car Garage

 2.0 Story

Elevate your life in 2023 with a new home by The Providence Group and \$5,000 towards closing cost when financing with one of Seller's 4 preferred lenders. The whole package! A 2-story Townhome with a fenced backyard and elevator shaft! Relax in the free-standing tub in the owner's bathroom. The owner's bathroom has 2 windows giving you abundant light in the place you need it most. Quartz countertops in the kitchen, Huge sliding glass door leading to your fenced back yard. Hardwood floors throughout the main level plus the owner's bedroom. Located one minute from the FUN at The Forum. Feel free to drive, walk, bike or run to restaurants, shopping, breweries, movies, and festivals. The back edge of Waterside meets the Chattahoochee River. We will have trails all along the river- the perfect spot to get away from the hustle and bustle! Then stop by one of the many fire pits throughout the neighborhood. Dump your fitness membership, there will be a fitness center inside the elegant clubhouse. Or get your heart rate up with a game of pickleball. We will have 4 courts for you to choose from. Take a dive in the pool or hang out on ...

**Want to Know More
About This Home?**

CONTACT OUR COMMUNITY SALES MANAGER
Call Us @ 470.514.6999

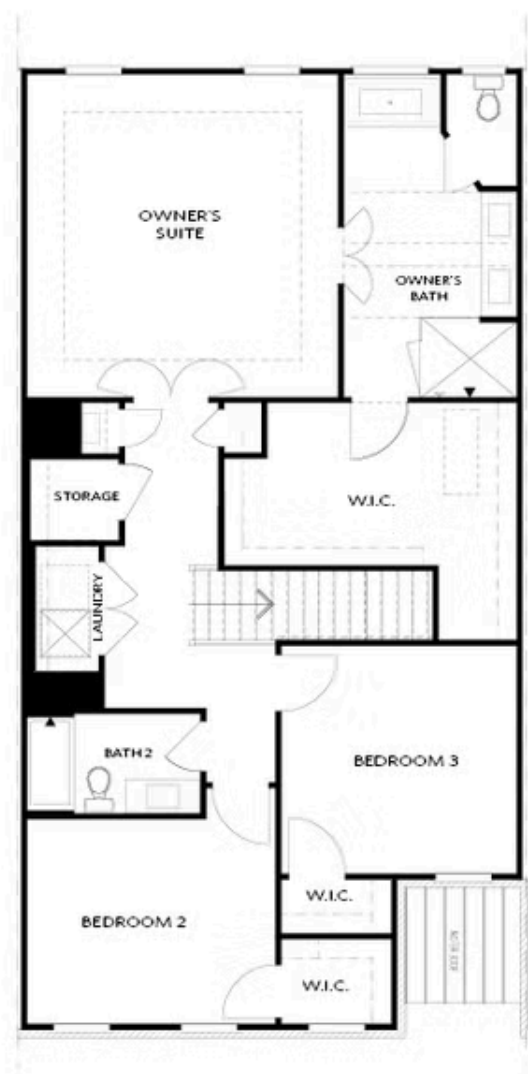


FIRST FLOOR

Elevation C, I, K

Want to Know More
About This Home?

CONTACT OUR COMMUNITY SALES MANAGER
Call Us @ 470.514.6999

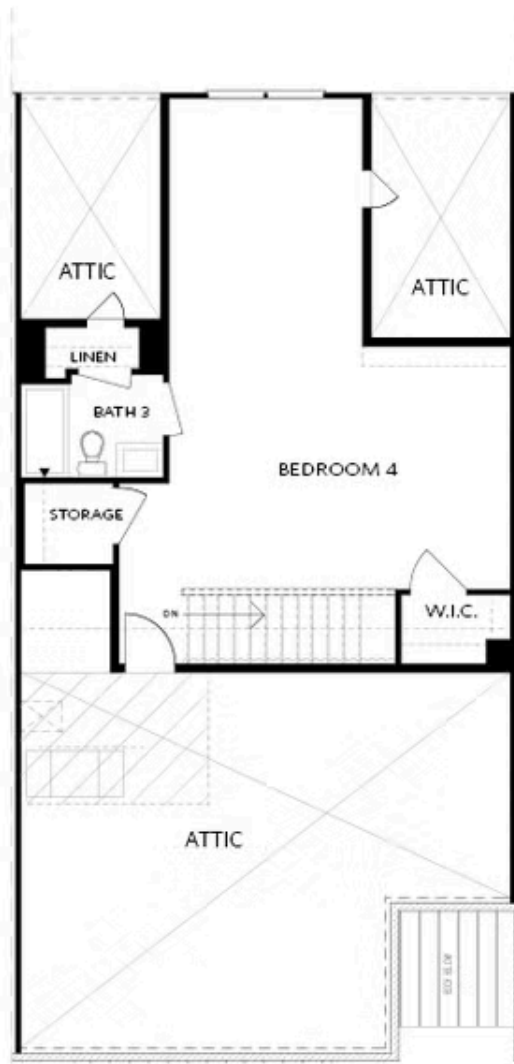


SECOND FLOOR

Elevation C, I, K

Want to Know More
About This Home?

CONTACT OUR COMMUNITY SALES MANAGER
Call Us @ 470.514.6999

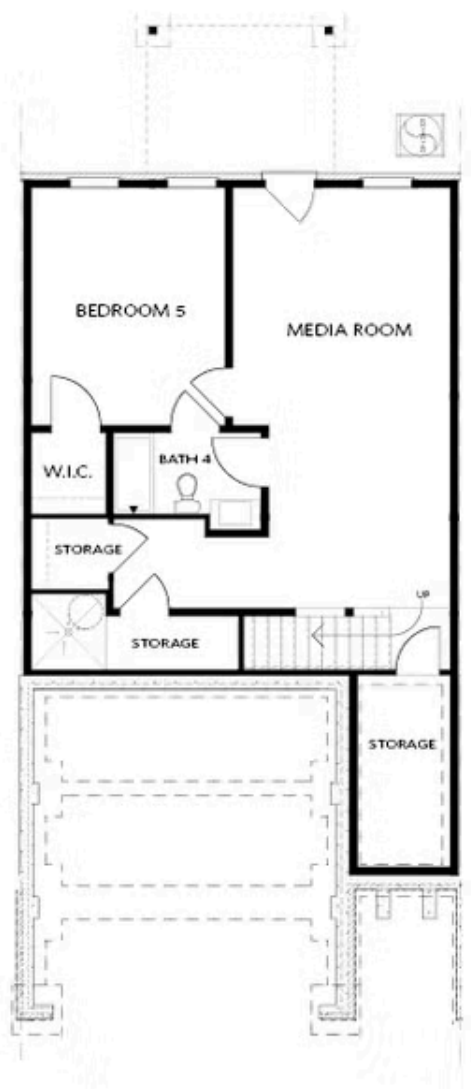


THIRD FLOOR

Elevation C, I, K

Want to Know More
About This Home?

CONTACT OUR COMMUNITY SALES MANAGER
Call Us @ 470.514.6999

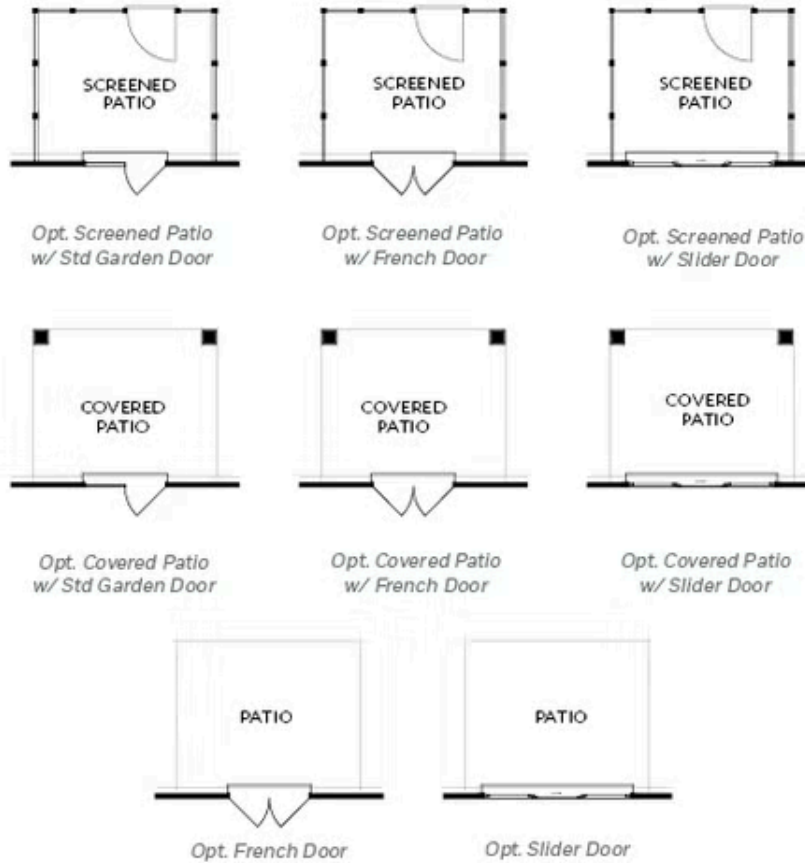


BASEMENT

Elevation C, I, K

Want to Know More
About This Home?

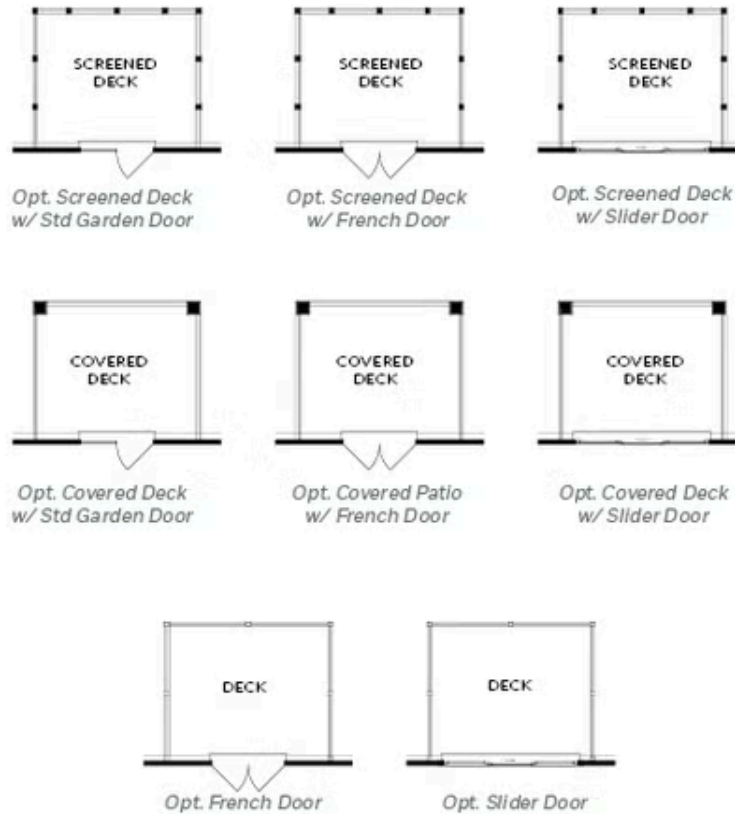
CONTACT OUR COMMUNITY SALES MANAGER
Call Us @ 470.514.6999



FIRST FLOOR
PATIO OPTIONS
ON A SLAB

Want to Know More
About This Home?

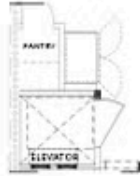
CONTACT OUR COMMUNITY SALES MANAGER
Call Us @ 470.514.6999



FIRST FLOOR
DECK OPTIONS
ON A BASEMENT

Want to Know More
About This Home?

CONTACT OUR COMMUNITY SALES MANAGER
Call Us @ 470.514.6999



Opt. Elevator
First Floor



Opt. Fireplace



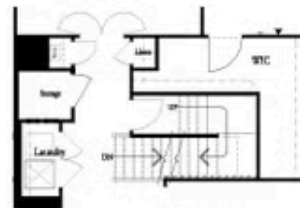
Opt. Linear Fireplace



Owner's Suite & Bath
*No Trey or Vaulted Ceilings w/ 3rd Floor



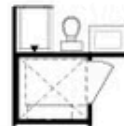
Opt. Elevator
Second Floor



2nd Floor Stairs to 3rd Floor



Opt. Open Rail on 3rd Floor



Opt. Elevator
Third Floor

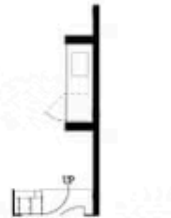
OPTIONS ON A SLAB WITH 3RD FLOOR

Want to Know More
About This Home?

CONTACT OUR COMMUNITY SALES MANAGER
Call Us @ 470.514.6999



Opt. Shower



Opt. Wet Bar



Opt. Elevator
Basement



Opt. Elevator
First Floor



Opt. Fireplace



Opt. Linear Fireplace



Opt. Elevator
Second Floor

OPTIONS ON A BASEMENT

Want to Know More
About This Home?

CONTACT OUR COMMUNITY SALES MANAGER
Call Us @ 470.514.6999