



PRICED AT  
**\$511,800**

 1862 Sq Ft

 2 Beds

 2.0 Baths

 1 Car Garage

 1.0 Story

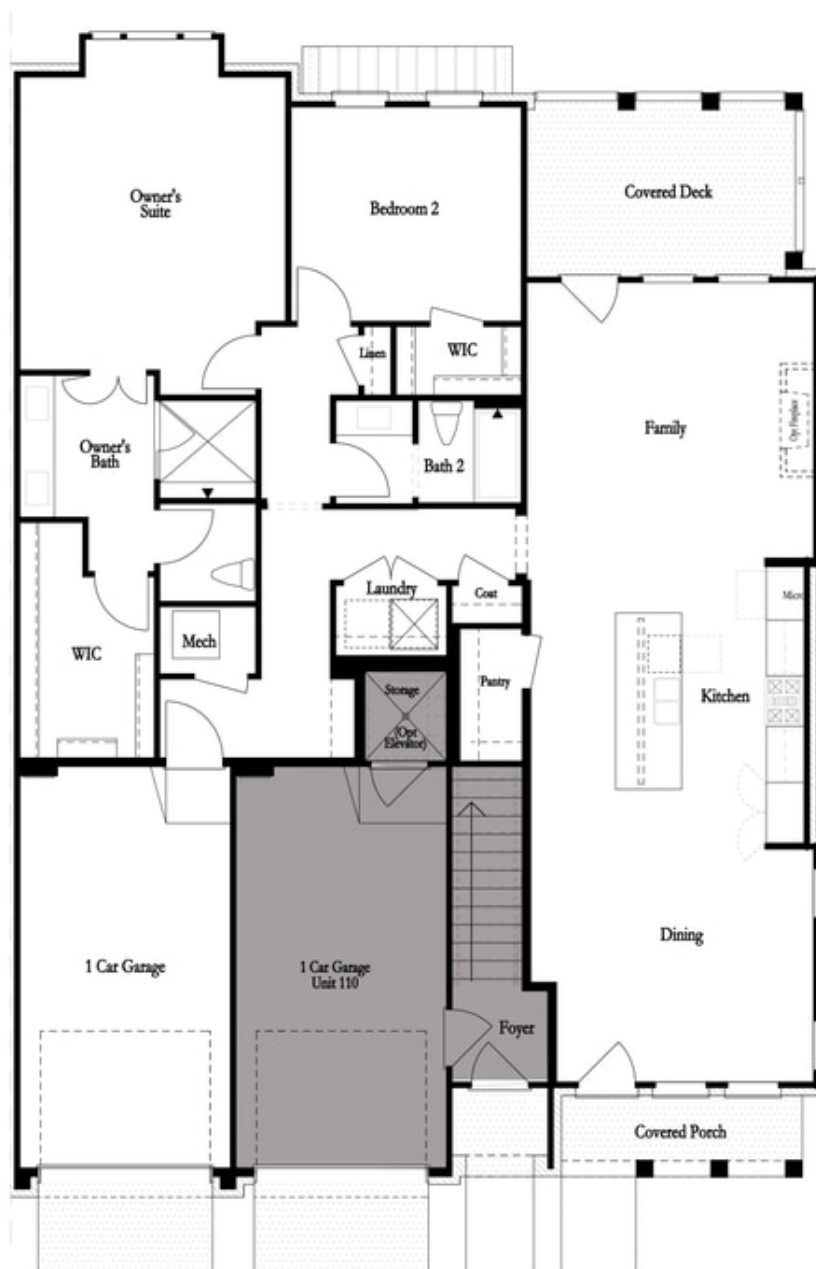
**NEW, ONE-LEVEL LIVING** along the Chattahoochee River! Location and Style is waiting for you in this 2 bedroom End Unit Condo! Welcome to The Baldwin Floorplan brought to you by The Providence Group. Open the door to ground level living and to a spacious living room w/fireplace, large kitchen w/entertaining island and dining area. Being an end unit, you will have extra windows giving your home a light and airy feel. Very spacious master suite with oversized shower, double sinks and walk in closet. Covered balcony on the back to enjoy some outdoor relaxation. Come check out this great way to live! The Baldwin is located in a New Gated Master Planned Community, surrounded by beautiful trees! Only one mile from the Forum and right beside E Jones Bridge Park. Amenities w/Swim, fitness, parks, clubhouse, pickle ball courts, walking trails by the Chattahoochee River etc. Photos do not represent the actual home. For driving directions, you can use 4411 E. Jones Bridge Road, Peachtree Corners, GA 30092.

**Want to Know More  
About This Home?**

CONTACT OUR NEW HOME NAVIGATOR

**NONE**

Call Us @ (470) 514-6999



Want to Know More  
About This Home?

CONTACT OUR NEW HOME NAVIGATOR

**NONE**

Call Us @ (470) 514-6999



Want to Know More  
About This Home?

CONTACT OUR NEW HOME NAVIGATOR

**NONE**

Call Us @ (470) 514-6999