



PRICED AT  
**\$649,685**

 2233 Sq Ft

 3 Beds

 2.5 Baths

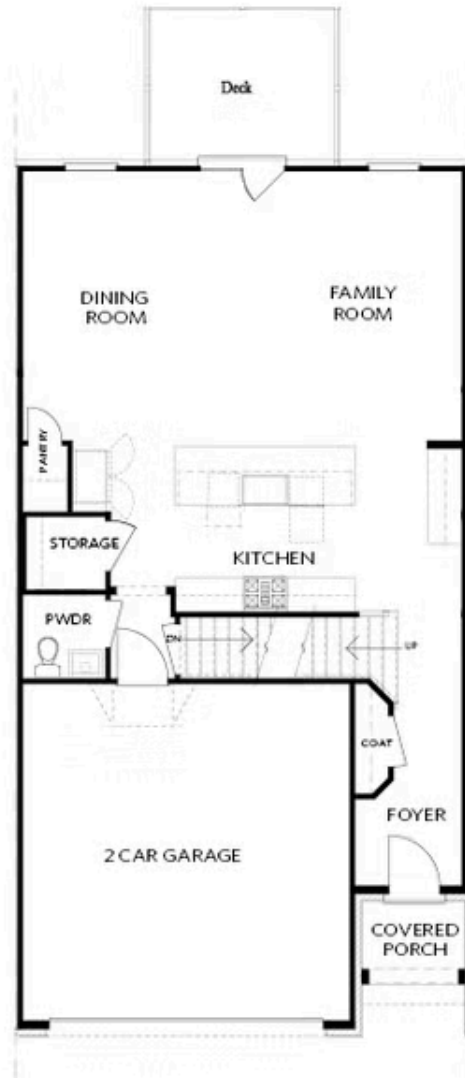
 2 Car Garage

 2.0 Story

Elevate your life in 2023! New Year New Price plus \$20k any way you want on all contracts written before 2/28/2023 and close 3/31/2023! Best floorplan in town. You will not find another home like this one! Perfect 2 story townhome with fenced backyard that is maintained by the HOA. What more could you ask for? If you are tired of stairs, this home has you covered. We have installed the elevator shaft, (currently a storage closet) ready for you whenever you decide to add an elevator. Abundant natural light gleams throughout the entire home. Wide-open and airy floor plan. Hardwood floor throughout main level. Loaded with options, I mean loaded. The owner's suite is massive and the closet is so big it could be another bedroom. 2 guest bedrooms upstairs are large and one of the bedrooms has a walk-in closet. The guest bedrooms will share a hall bath. All of this within one mile to the Forum and less than a mile to Jones Bridge Park. The city had recently widened the sidewalk from ST141 down E Jones Bridge Road making it easier to bike, walk, run or stroll. From the moment you enter Waterside, you will fall ...

**Want to Know More  
About This Home?**

CONTACT OUR COMMUNITY SALES MANAGER  
Call Us @ 470.514.6999

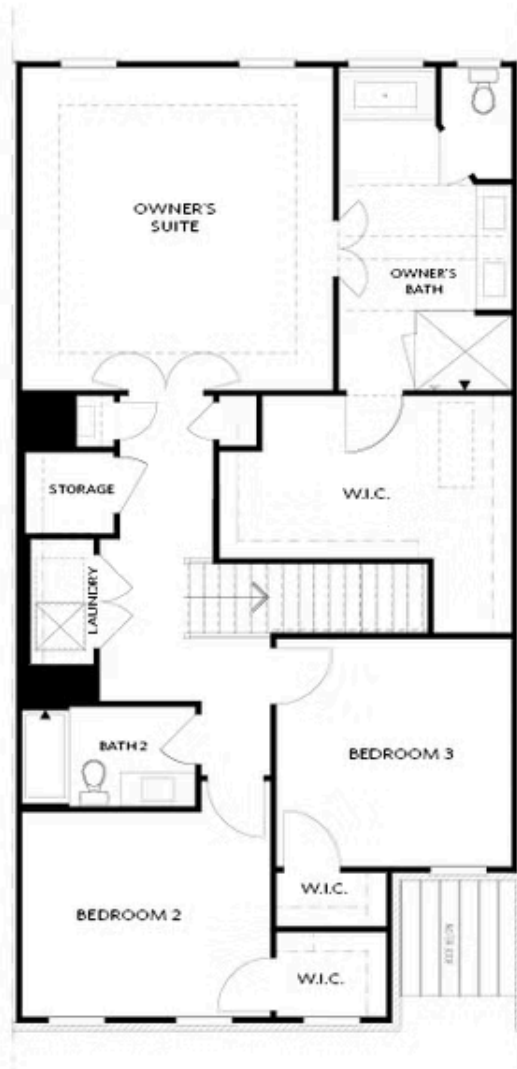


FIRST FLOOR

Elevation C, I, K

Want to Know More  
About This Home?

CONTACT OUR COMMUNITY SALES MANAGER  
Call Us @ 470.514.6999

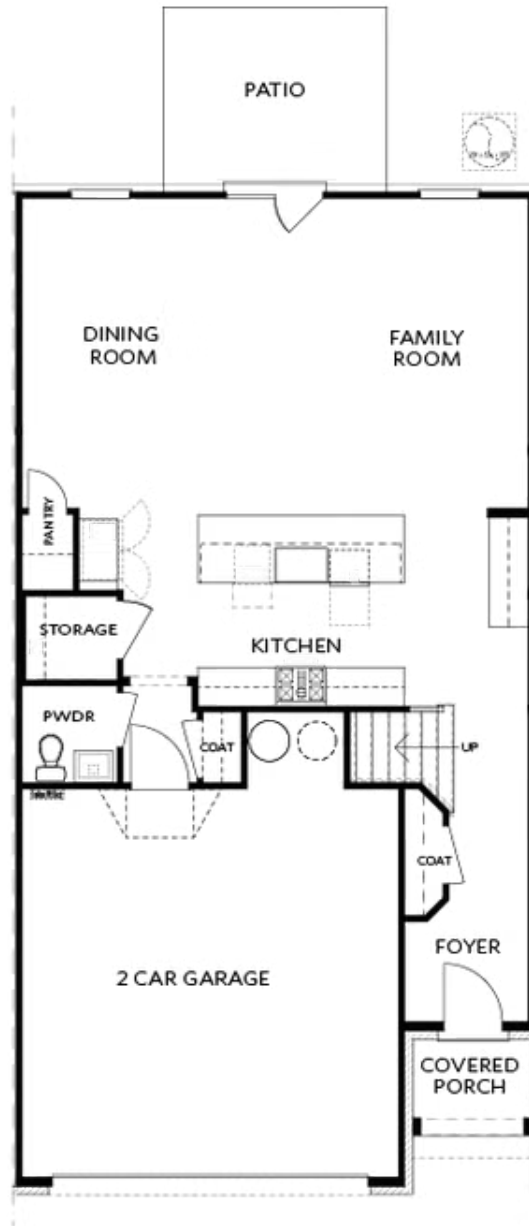


SECOND FLOOR

Elevation C, I, K

Want to Know More  
About This Home?

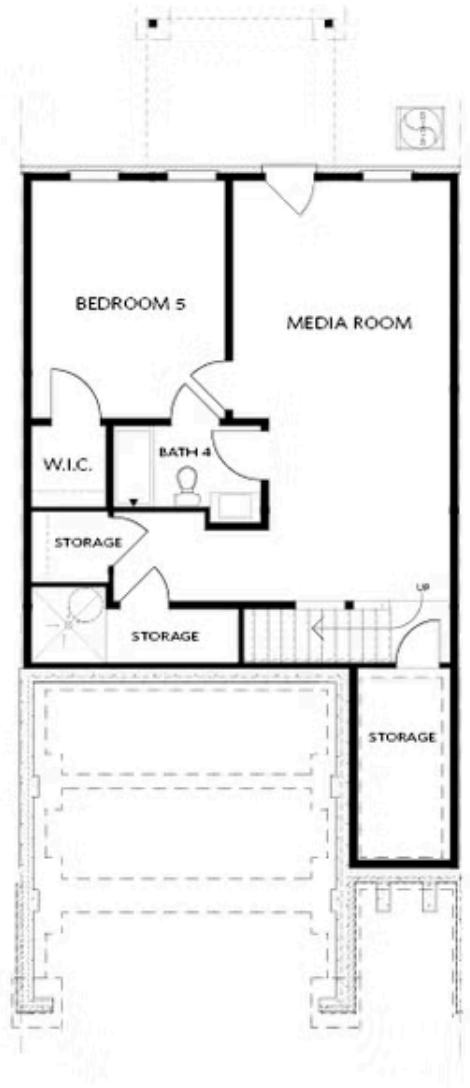
CONTACT OUR COMMUNITY SALES MANAGER  
Call Us @ 470.514.6999



Elevations C, I, K

Want to Know More  
About This Home?

CONTACT OUR COMMUNITY SALES MANAGER  
Call Us @ 470.514.6999

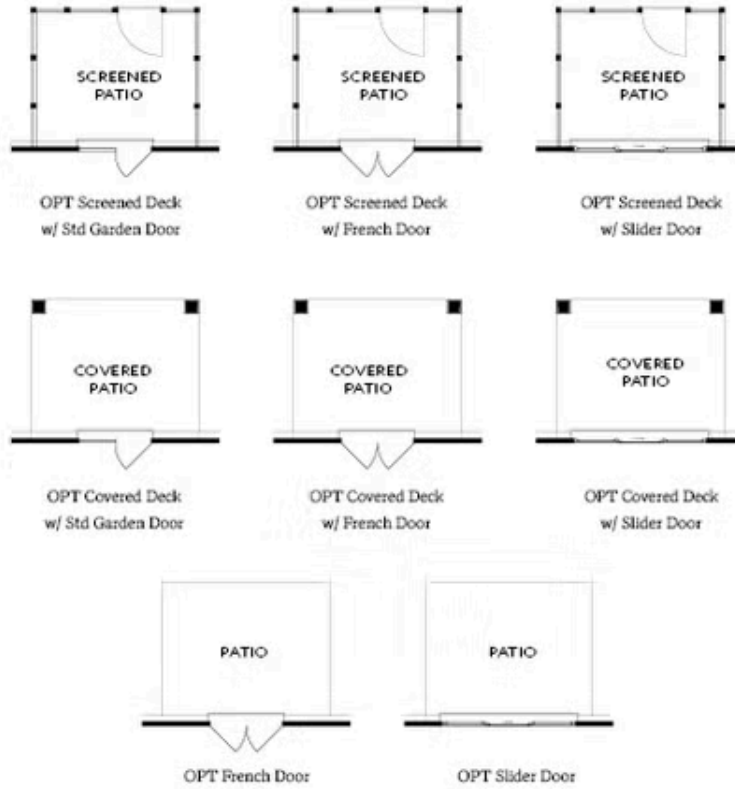


BASEMENT

Elevation C, I, K

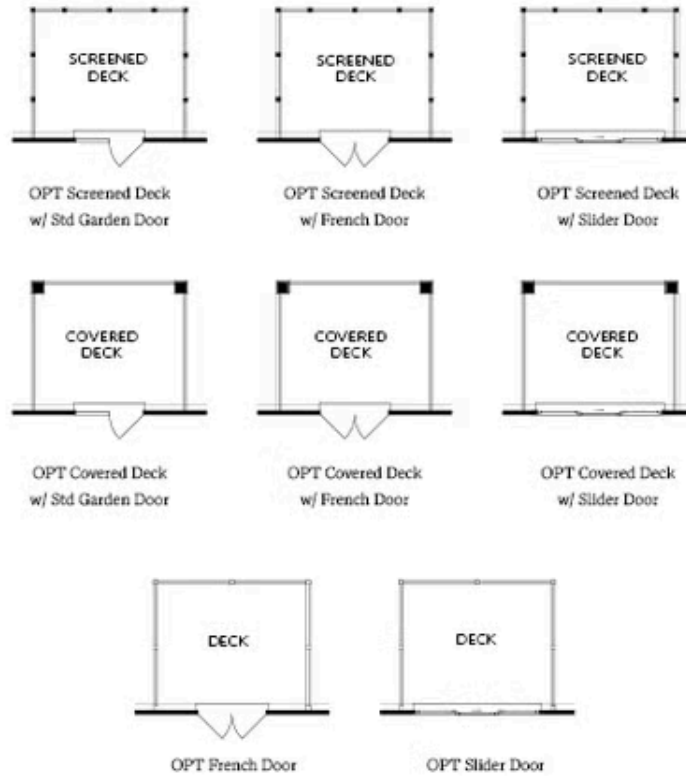
Want to Know More  
About This Home?

CONTACT OUR COMMUNITY SALES MANAGER  
Call Us @ 470.514.6999



**Want to Know More  
 About This Home?**

CONTACT OUR COMMUNITY SALES MANAGER  
 Call Us @ 470.514.6999



Want to Know More  
About This Home?

CONTACT OUR COMMUNITY SALES MANAGER  
Call Us @ 470.514.6999



OPT Elevator - Second Floor



OPT Elevator - First Floor



OPT Fireplace



OPT Linear Fireplace

Want to Know More  
About This Home?

CONTACT OUR COMMUNITY SALES MANAGER  
Call Us @ 470.514.6999





OPT Shower - Basement Bath



OPT Wet Bar - Basement



OPT Elevator - Basement



OPT Elevator - First Floor



OPT Fireplace



OPT Linear Fireplace



OPT Elevator - Second Floor

Want to Know More  
 About This Home?

CONTACT OUR COMMUNITY SALES MANAGER  
 Call Us @ 470.514.6999