



PRICED AT
\$501,800

 1862 Sq Ft

 2 Beds

 2.0 Baths

 1 Car Garage

 1.0 Story

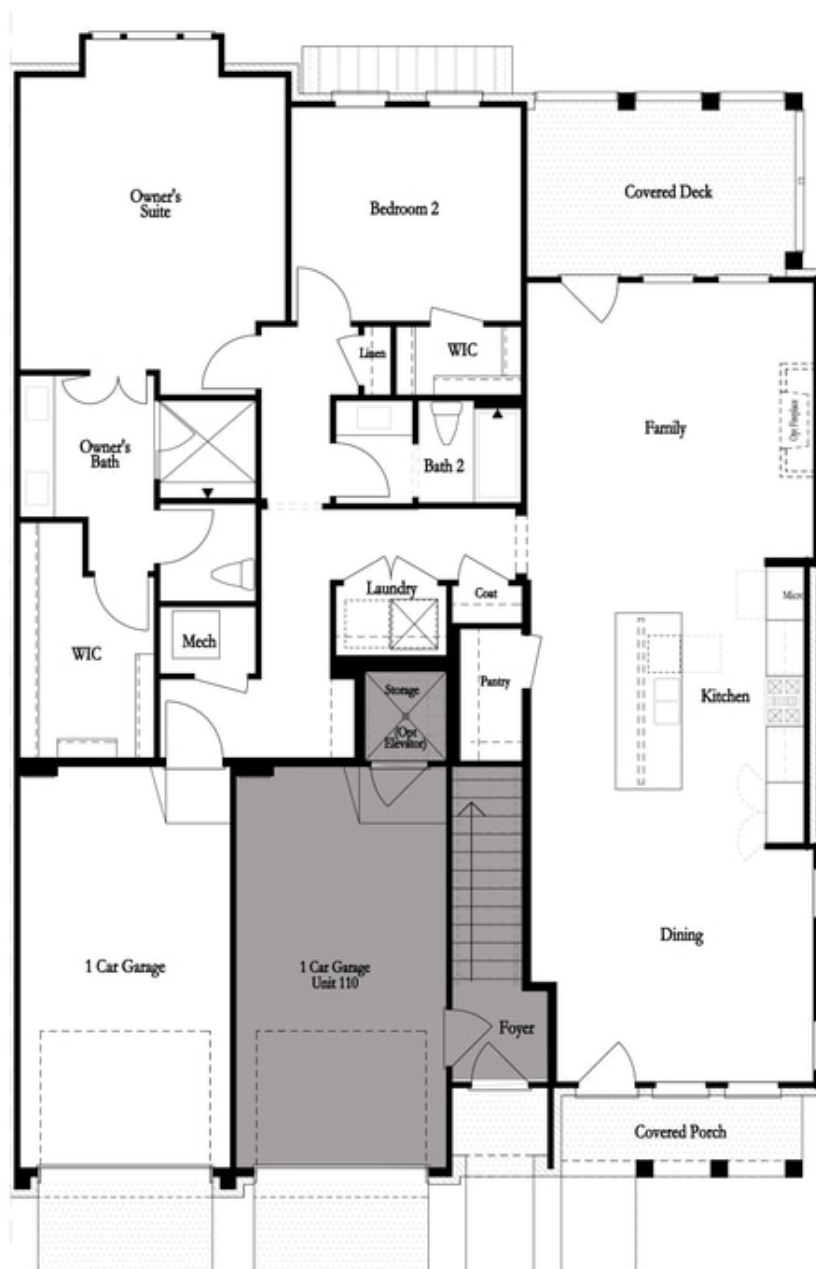
Excellent 2 bedroom End Unit Condo! Come and check out this home. The Baldwin floor plan is currently under construction in Peachtree Corners. Open the door to a spacious living room, kitchen and dining. Being an end unit, you will have extra windows in the dining room giving your home a light and airy feel. All of this is located in a New Gated Master Planned Community is backing up to the Chattahoochee River, surrounded by beautiful lush trees and the opportunity to take a walk down to the River or enjoy state of the art amenities w/Swim, fitness, parks, clubhouse, etc. And one of the best things is that you are 1 mile from the Forum. Photos do not represent the actual home For driving directions, you can use 4411 E. Jones Bridge Road, Peachtree Corners, GA 30092

**Want to Know More
About This Home?**

CONTACT OUR NEW HOME NAVIGATOR

NONE

Call Us @ (470) 514-6999



**Want to Know More
About This Home?**

CONTACT OUR NEW HOME NAVIGATOR

NONE

Call Us @ (470) 514-6999



Want to Know More
About This Home?

CONTACT OUR NEW HOME NAVIGATOR

NONE

Call Us @ (470) 514-6999