



PRICED AT
\$866,660

 2964 Sq Ft

 4 Beds

 3.5 Baths

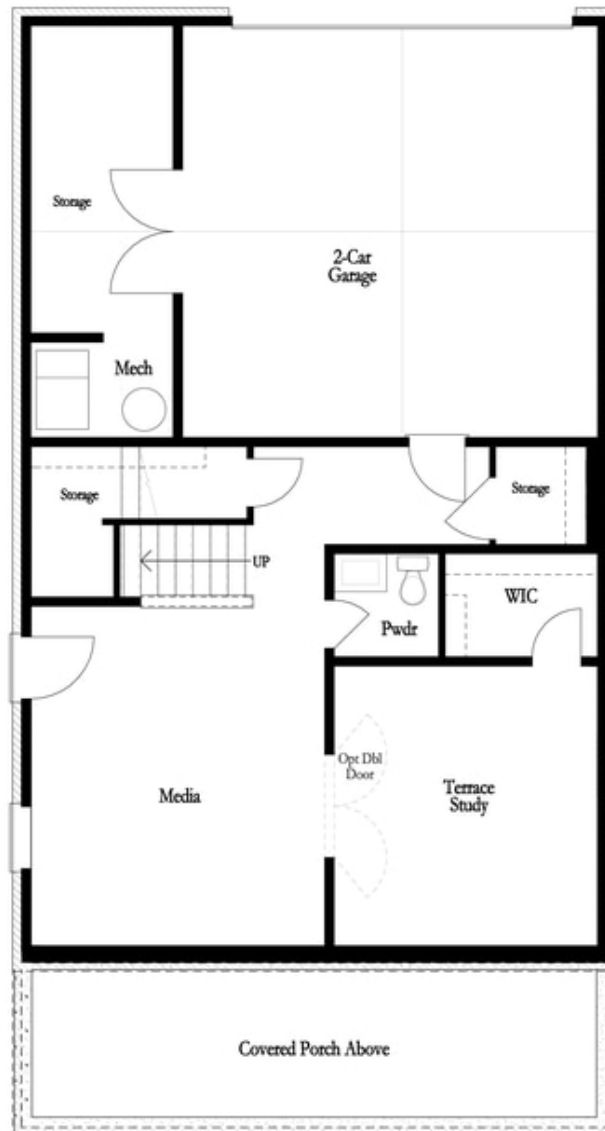
 2 Car Garage

 3.0 Story

Elevate your life in 2023 with a new home by The Providence Group and \$5,000 towards closing cost when financing with one of Seller's 4 preferred lenders. This is it! The Manchester C home design is currently at a stage where you can SELECT your INTERIOR OPTIONS at our awesome design studio. One of the most sought-after home designs in one of the best locations in the community. You are greeted by a large covered front porch that really makes a statement. Open the front door to a beautifully designed open floor plan with abundant natural light. The kitchen is magnificent and designed very well with tons of cabinets and counter space. The main floor has 10' ceilings. Warm up on chilly evenings by your family room fireplace or head outside to the Awesome covered porch off the kitchen with a view of the prettiest green trees. Enjoy coffee or your beverage of choice here. Another cool feature is your fenced courtyard. The spacious owners suite has a luxurious bath with separate tiled shower, a freestanding tub and dual vanity. The upper floor has 2 additional bedrooms with a shared bath and the laundry room is conveniently situated close to ...

**Want to Know More
About This Home?**

CONTACT OUR NEW HOME NAVIGATOR
Call Us @ (470) 514-6999



Basement Floor

Want to Know More
About This Home?

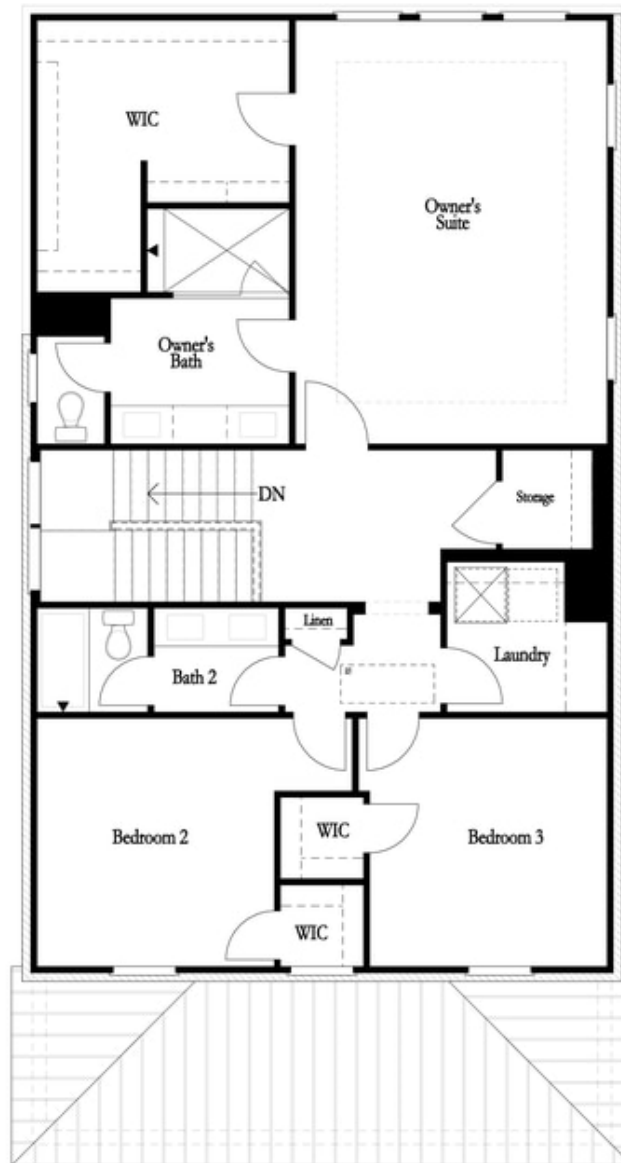
CONTACT OUR NEW HOME NAVIGATOR
Call Us @ (470) 514-6999



First Floor

**Want to Know More
About This Home?**

CONTACT OUR NEW HOME NAVIGATOR
Call Us @ (470) 514-6999

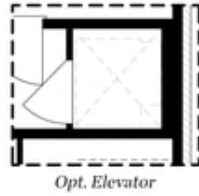


Second Floor

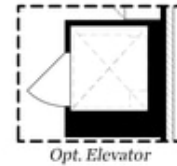
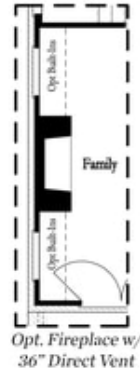
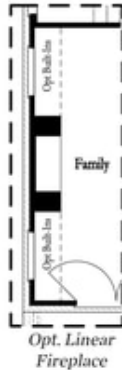
**Want to Know More
About This Home?**

CONTACT OUR NEW HOME NAVIGATOR
Call Us @ (470) 514-6999

Options



Basement Floor Options



First Floor Options

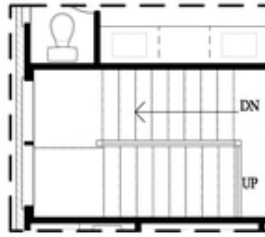
**Want to Know More
 About This Home?**

CONTACT OUR NEW HOME NAVIGATOR
 Call Us @ (470) 514-6999

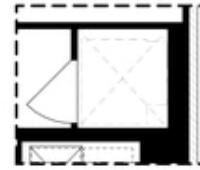
Options



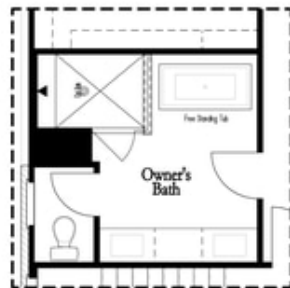
Opt. Laundry Sink



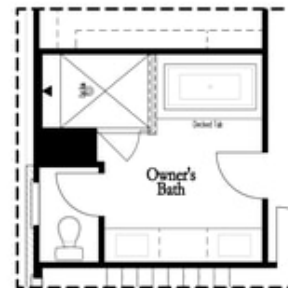
Opt. Open Rail Staircase



Opt. Elevator



Opt. Freestanding Tub



Opt. Decked Tub

Second Floor Options

**Want to Know More
About This Home?**

CONTACT OUR NEW HOME NAVIGATOR
Call Us @ (470) 514-6999