



PRICED AT  
**\$846,665**

 3103 Sq Ft

 4 Beds

 3.5 Baths

 2 Car Garage

 3.0 Story

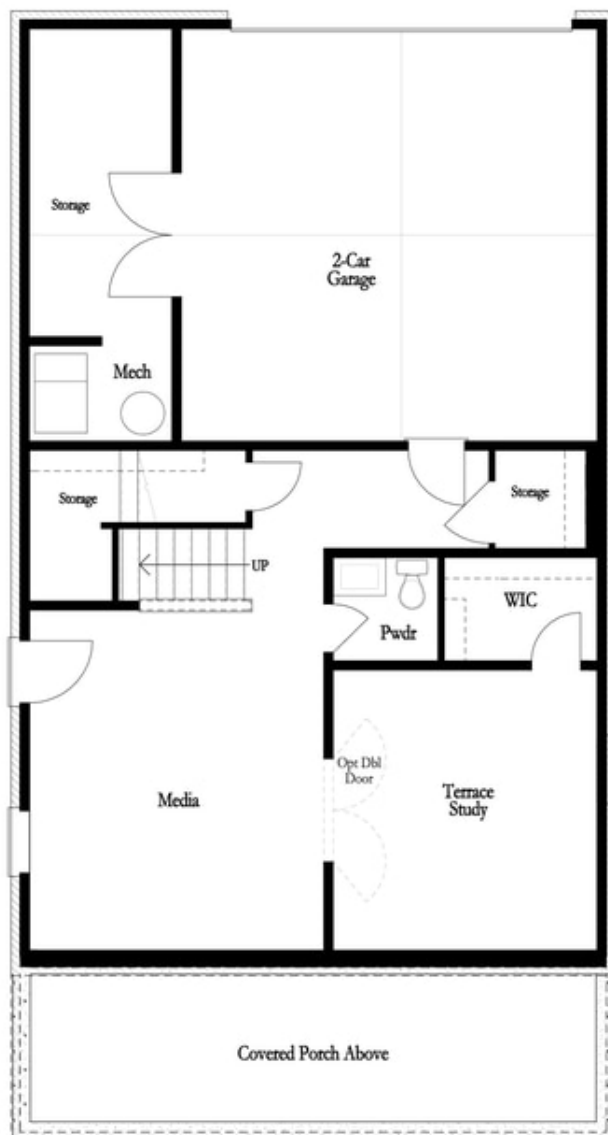
**What a View.** The most sought-after home design, The Manchester A, is ready for you to select most of your interior options. Not only is the home design outstanding, but the homesite is also outstanding. The homesite backs up to the prettiest green trees with a small tributary running through it. It will always remain green and undisturbed. The Manchester A home design offers tons of natural light throughout the home, a large covered front porch, and a lovely rear deck that is also covered. Inside of the home is extremely open and airy. The kitchen is to die for, so many cabinets and countertops space. Massive island and the sink is not in the island, it's tucked underneath three huge windows in the kitchen. Owners bedroom has a huge walk in closet and a spa like bath with tiled shower and separate freestanding tub. 2 guests bedrooms have a shared bath on the upper floor. The laundry room is conveniently located on the upper floor close to the bedrooms. On the terrace level, you will find a media room that could double as a home office or additional tv room. Lastly there is a private bedroom and bath located ...

**Want to Know More  
About This Home?**

CONTACT OUR NEW HOME NAVIGATOR

**NONE**

Call Us @ (470) 514-6999



Basement Floor

Want to Know More  
About This Home?

CONTACT OUR NEW HOME NAVIGATOR

**NONE**

Call Us @ (470) 514-6999



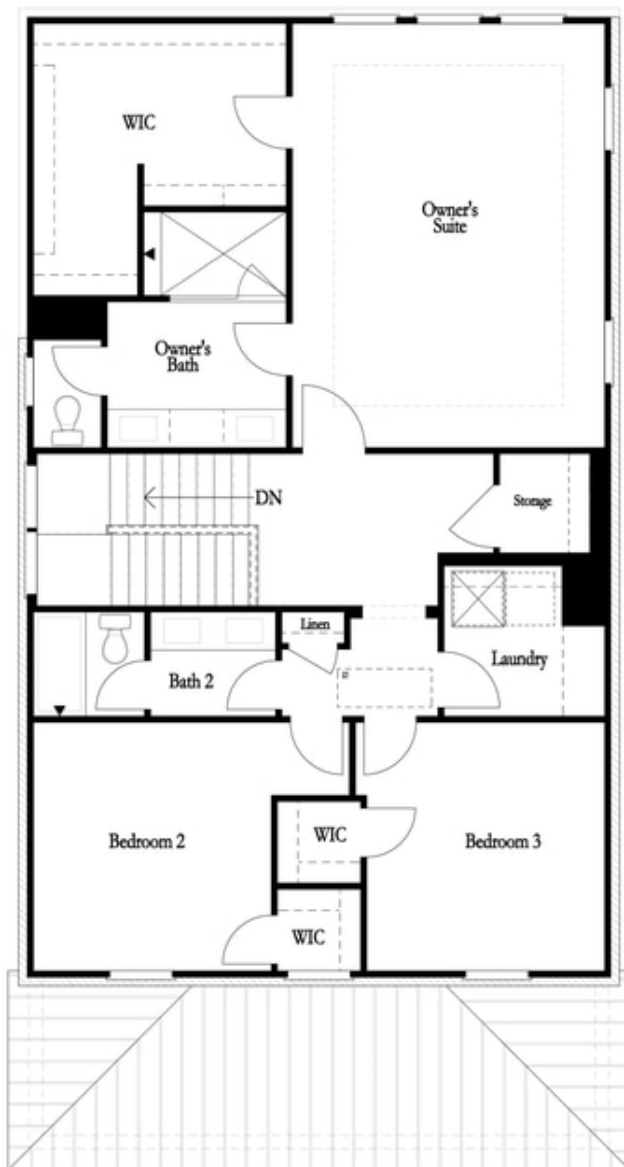
First Floor

Want to Know More  
About This Home?

CONTACT OUR NEW HOME NAVIGATOR

**NONE**

Call Us @ (470) 514-6999



Second Floor

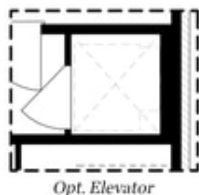
**Want to Know More  
About This Home?**

CONTACT OUR NEW HOME NAVIGATOR

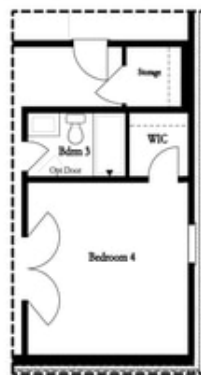
**NONE**

Call Us @ (470) 514-6999

Options

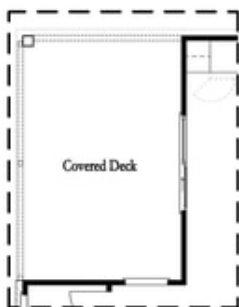


Opt. Elevator



Opt. Bedroom w/ Full Bath

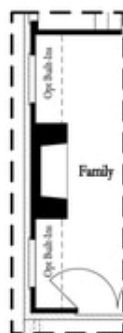
Basement Floor Options



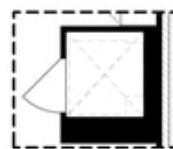
Opt. Slider Door



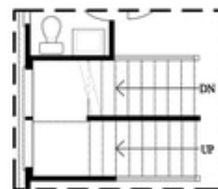
Opt. Linear  
Fireplace



Opt. Fireplace w/  
36" Direct Vent



Opt. Elevator



Opt. Open Rail  
Staircase

First Floor Options

Want to Know More  
About This Home?

CONTACT OUR NEW HOME NAVIGATOR

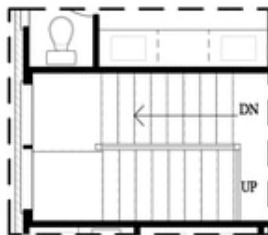
**NONE**

Call Us @ (470) 514-6999

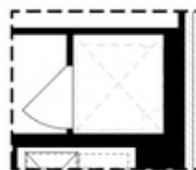
### Options



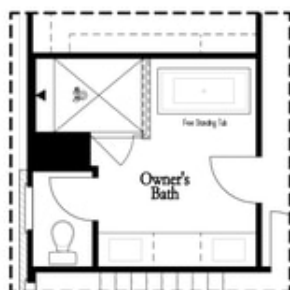
*Opt. Laundry Sink*



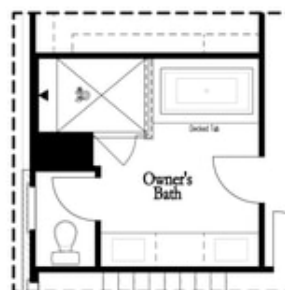
*Opt. Open Rail  
Staircase*



*Opt. Elevator*



*Opt. Freestanding Tub*



*Opt. Decked Tub*

### Second Floor Options

**Want to Know More  
About This Home?**

CONTACT OUR NEW HOME NAVIGATOR

**NONE**

Call Us @ (470) 514-6999